

RETAIL @

M4K

4 MARTIN LUTHER KING JR BLVD
& FIREHOUSE BUILDING
BALTIMORE, MARYLAND

www.4mlk.com



SITUATED IN THE:



INVESTMENT & DEVELOPMENT BY:



RETAIL LEASING BY:



OVERVIEW

4MLK is part of the **BioPark**, Wexford Science & Technology's Knowledge Community in Baltimore, Maryland. The BioPark is a biomedical research community adjacent to the vibrant academic medical center campus of the University of Maryland, Baltimore. It is a community of life science companies and academic research centers that are commercializing new drugs, diagnostics and devices and advancing biomedical research. 4MLK is a center of gravity for researchers, innovators, experts and entrepreneurs working at the leading edge of science & technology in the third largest biopharma cluster in the U.S.

BioPark Tenants:



Phase I of the **4MLK Development** will consist of a new 250,000 SF Class A Life Science Building (with an opportunity to build an additional 250,000 SF on the site for a total of over 500,000 SF), and include up to **8,164 SF ±** of **ground floor retail**.



Located at the intersection of Martin Luther King Jr Boulevard and Baltimore Street, **4MLK** is a gateway between the BioPark, University of Maryland, Baltimore, and University of Maryland Medical Center (UMMC) offering Class A laboratory, office, flex lab, convening spaces and **ground floor retail**.



OVERVIEW

BUILDING SIZE:	250,000 SF
AVAILABLE RETAIL:	RETAIL A: 1,200-2,444 SF
	RETAIL B: 2,435 SF
	RETAIL C: 3,285 SF
ASKING RENT:	NEGOTIABLE

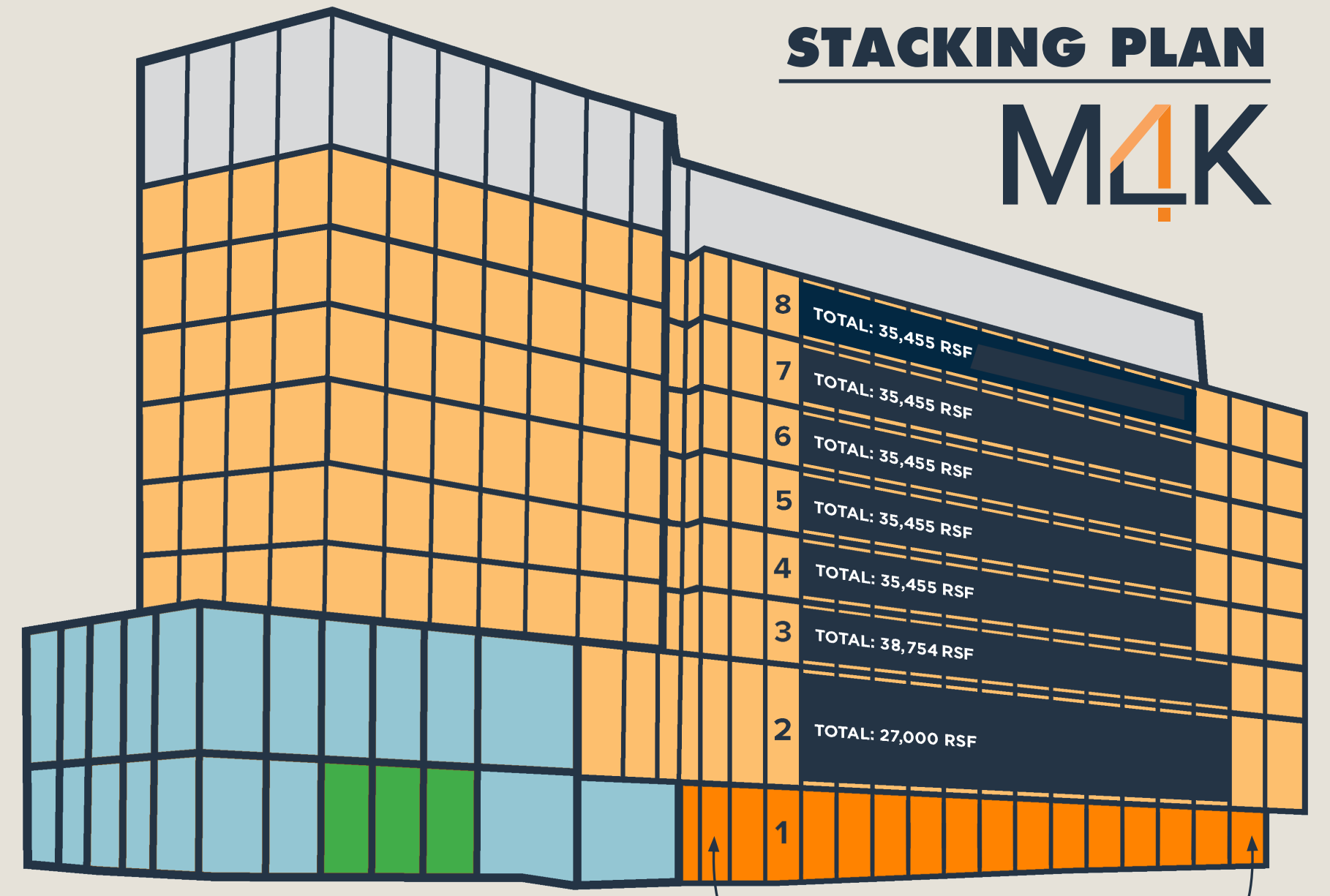
HIGHLIGHTS

- Brand-new construction in a landmark Class-A building with LIMITED dedicated retail opportunities
- Active daytime population of 34,074 within a 0.5 mile radius, driven by the University's medical system and academic uses
- Major transit route to Downtown Baltimore, Baltimore Ravens' and Orioles' stadiums, the Horseshoe Casino, I-95, and the BWI Airport
- Excellent storefront roadside visibility on Martin Luther King Jr. Boulevard (53,971 ADT)
- Access to the University of Maryland BioPark's amenities
- Adjacent public plaza
- Access to on-site UMB Core Facilities and regional CROs

M4K 1ST FLOOR RETAIL



STACKING PLAN M4K



- INNOVATION HALL
- LEASED
- RETAIL SPACE
- LAB-OFFICE SPACE
- MECHANICAL



The **Firehouse** is currently under redevelopment to improve the building's shell and make it available to a full-service, **food and beverage operator** while preserving its historical architectural features.

FOOD/
BEVERAGE
4,800 SF
2 STORIES

THE FIREHOUSE

OVERVIEW

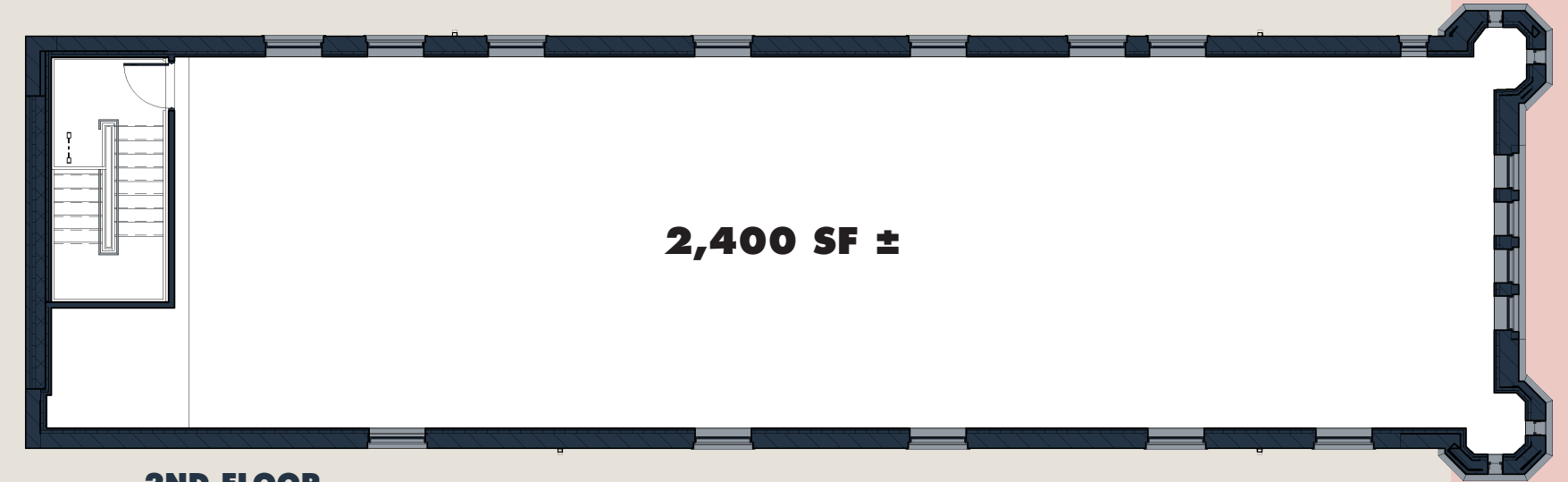
BUILDING SIZE:	4,800 SF
STORIES:	2
AVAILABLE:	4,800 SF
ASKING RENT:	NEGOTIABLE

HIGHLIGHTS

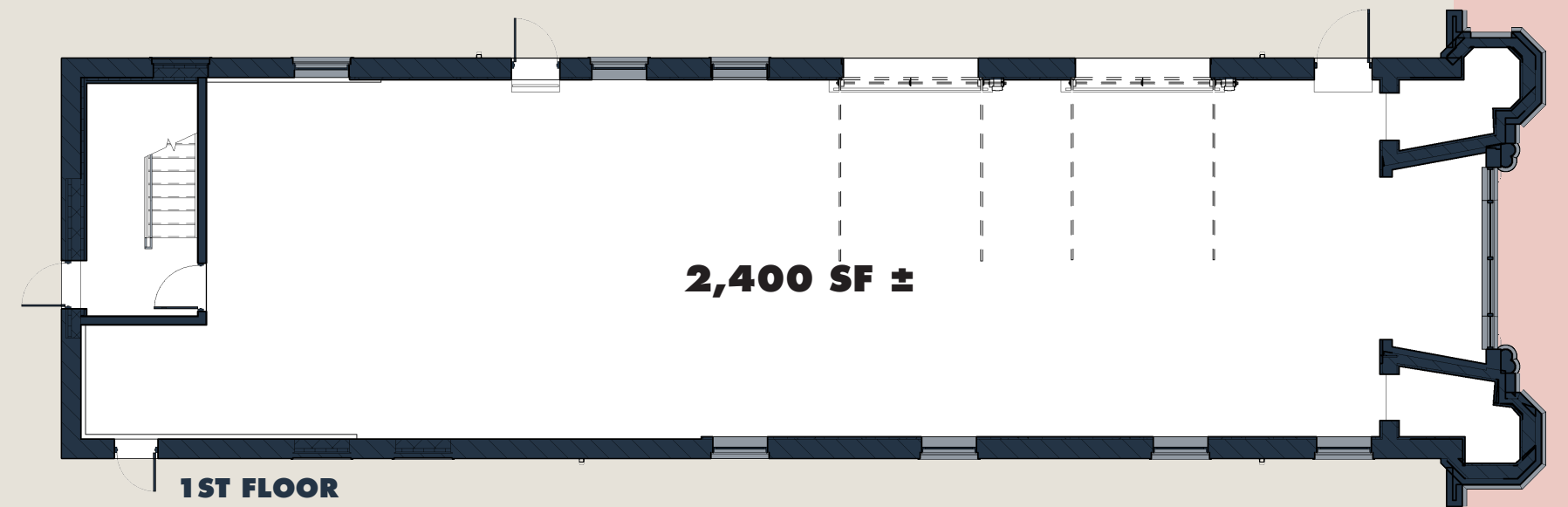
- Seeking local or regional **food & beverage operator**
- Unique two-story **former Firehouse** with **outdoor seating** in a **shared plaza** with the brand new 4MLK
- Adjacent to the **University of Maryland Baltimore campus** including the Schools of Medicine, Dentistry, Pharmacy, Nursing, Social Work, Law, and Public Health
- Located on the 14-acre **BioPark** featuring 8 buildings and 1,000+ workers
- Unmet demand for a creative **"all day" concept** to serve the bustling UMB medical system and academic community



THE FIREHOUSE FLOOR PLANS



2ND FLOOR



1ST FLOOR

W BALTIMORE ST



LOCAL BIRDSEYE

UNIVERSITY OF MARYLAND BIOPARK

UNIVERSITY OF MARYLAND BALTIMORE

- Located off I-95, adjacent to the University of Maryland Baltimore and University of Maryland Medical Center campuses
- Close proximity to Central Business District, the Inner Harbor, Camden Yards and M&T Bank Stadium
- Easy access to numerous amenities and University of Maryland facilities
- Located 3 miles from John Hopkins Medical campus
- 15-minute drive to BWI Thurgood Marshall Airport



CAMPUS STATS 2023

UMB PROFESSIONAL SCHOOLS:



6,667
STUDENTS



8,206
EMPLOYEES

6 GRADUATE PROGRAMS:

As the state's only public health, law, and human services university, UMB confers the majority of professional practice doctoral degrees awarded in Maryland each year.



SCHOOL OF MEDICINE



SCHOOL OF LAW



SCHOOL OF DENTISTRY



SCHOOL OF PHARMACY



SCHOOL OF NURSING



SCHOOL OF SOCIAL WORK

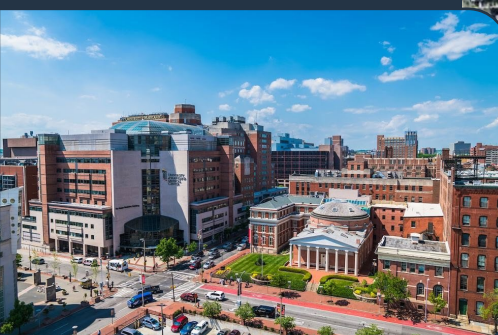
TRADE AREA



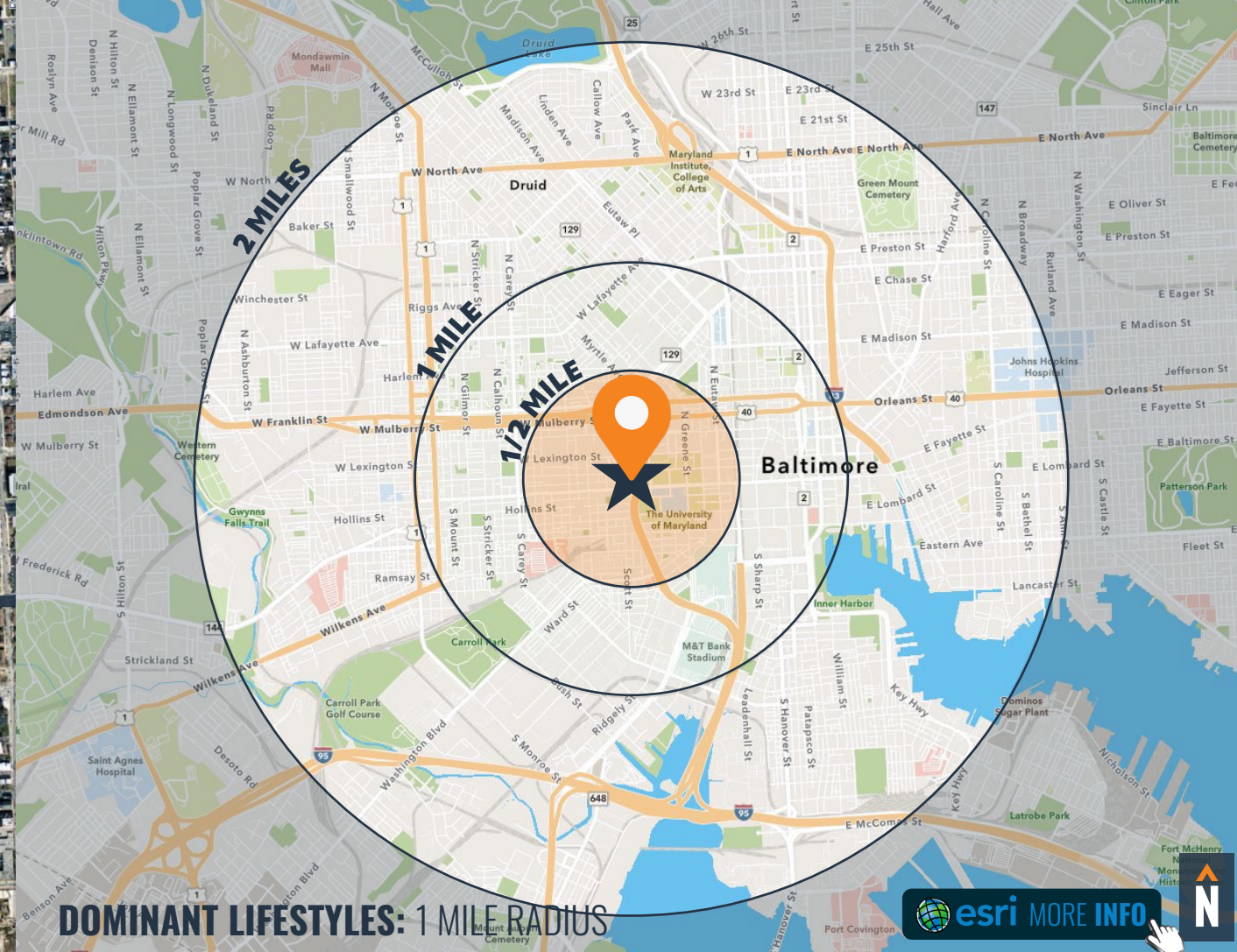
University of Maryland BioPark



University of Maryland Baltimore



University of Maryland Medical Center



36%
METRO RENTERS



These communities are composed of highly educated young professionals in their 20s and 30s earning upper-tier incomes. They like to shop at specialty grocery stores and go to movies, bars, clubs and museums.

Median Age: **32.9**
Median Household Income: **\$94,766**

21%
INDEPENDENT CITYSCAPES



Members of these communities are mainly single individuals, female single parents raising young children, or family households without couples or children. They often shop at nearby discount and convenience stores.

Median Age: **39.3**
Median Household Income: **\$26,555**

15%
SOCIAL SECURITY SET



This population is older, often widowed or divorced, and there is a higher proportion of single-person households than any other segment. They typically prioritize budget-friendly and essential items when shopping.

Median Age: **49.5**
Median Household Income: **\$31,425**

DEMOGRAPHICS

2025

RADIUS: **.5 MILES** **1 MILE** **2 MILES**

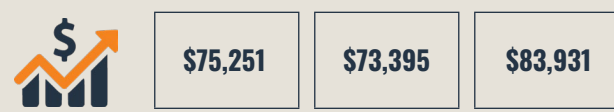
RESIDENTIAL POPULATION



DAYTIME POPULATION



AVERAGE HOUSEHOLD INCOME



NUMBER OF HOUSEHOLDS



MEDIAN AGE



FULL DEMOS REPORT

FOR MORE INFO CONTACT:



HENRY DEFORD

SENIOR VICE PRESIDENT & PRINCIPAL

410.494.4861

HDEFORD@mackenziecommercial.com



TIM HARRINGTON

VICE PRESIDENT

410.494.4855

TIMHARRINGTON@mackenziecommercial.com



COREY CAPUTO

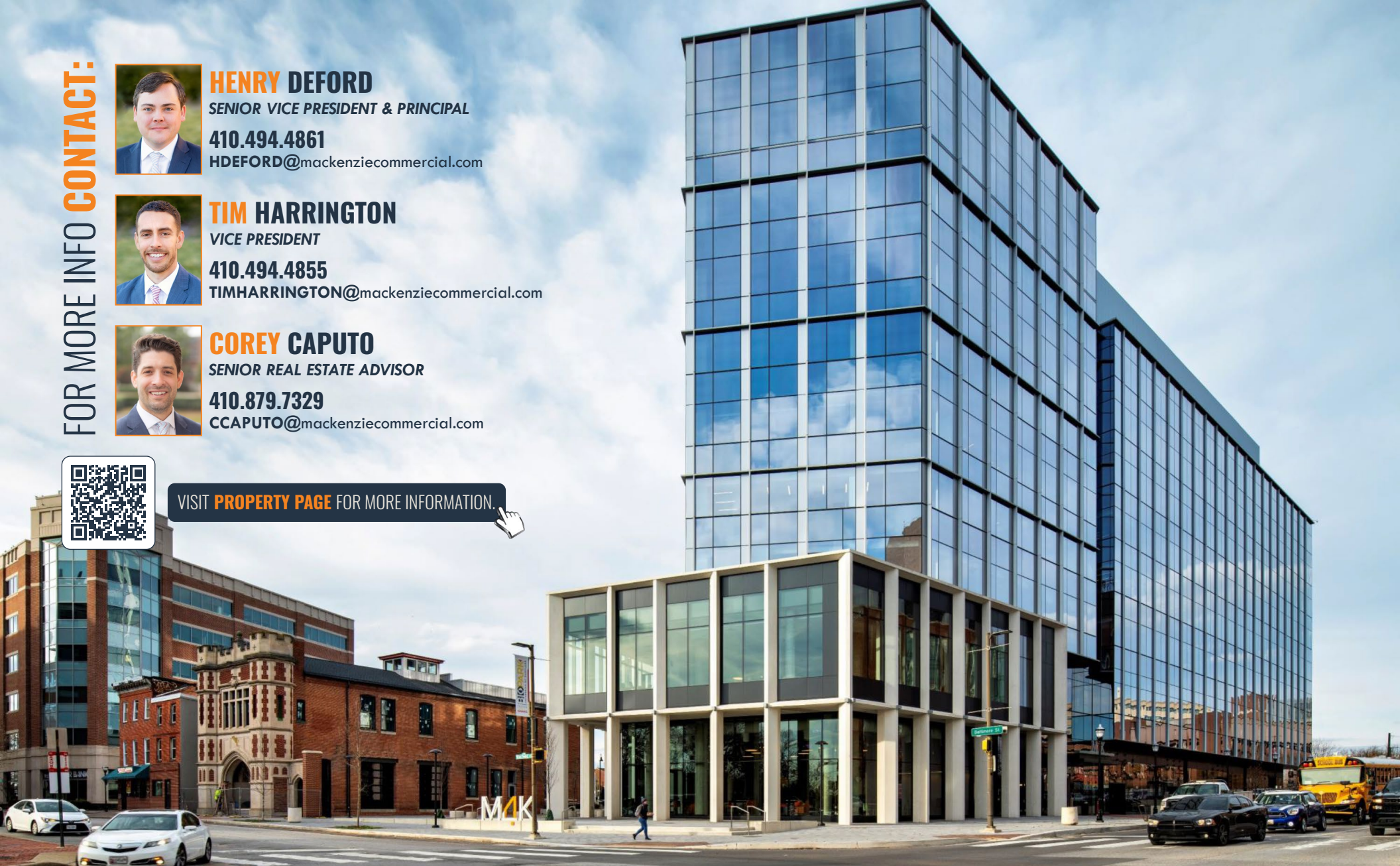
SENIOR REAL ESTATE ADVISOR

410.879.7329

CCAPUTO@mackenziecommercial.com



VISIT **PROPERTY PAGE** FOR MORE INFORMATION.



MACKENZIE

COMMERCIAL REAL ESTATE SERVICES, LLC

410-821-8585

2328 W. JOPPA ROAD, SUITE 200

LUTHERVILLE, MD 21093

WWW.MACKENZIECOMMERCIAL.COM

OFFICES IN: ANNAPOLIS, MD BALTIMORE, MD BEL AIR, MD COLUMBIA, MD **LUTHERVILLE, MD** CHARLOTTESVILLE, VA

No warranty or representation, expressed or implied, is made as to the accuracy of the information contained herein, and same is submitted subject to errors, omissions, change of price, rental or other conditions, withdrawal without notice, and to any specific listing conditions imposed by our principals.