

680 8TH STREET

SHOWPLACE SQUARE / DESIGN DISTRICT



CREATIVE OFFICE SPACES FOR LEASE

PLEASE CONTACT FOR MORE INFORMATION:

JAY D. SHAFFER
(415) 407-3997
jshaffer@coltoncommercialsf.com
License #: 01444640



BRYAN B. COLTON
(415) 595-6959
bryancolton@coltoncommercialsf.com
License #: 02111407

PROPERTY HIGHLIGHTS & AVAILABILITIES



CREATIVE OFFICE SPACES FOR AVAILABLE FOR LEASE

HEART OF DESIGN DISTRICT LOCATION

FULL HVAC

ONSITE PARKING

ONSITE BUILDING MANAGEMENT

LOADING DOCKS

AVAILABLE NOW:

SUITE	SQ. FT.	RATE	COMMENTS
Suite 202/203	6,625 RSF +/-	\$19 MG	2nd floor office space. Divisible to 2,863 or 3,762 RSF, total of 6,625 RSF. Open area, conference rooms, private offices, kitchen, in-suite bathrooms. Access to exclusive roof deck (bonus space), full HVAC.
Suite 231/206	1,591 RSF +/-	\$26 MG	Creative office space with large open area, conference room, private office, kitchenette, private bathroom, full HVAC, space is divisible.
Suite 230	2,406 RSF +/-	\$19 MG	2nd floor office space with open area, four private offices/meeting rooms, small meeting room, storage room, kitchenette, full HVAC.
Suite 240A	1,273 RSF +/-	\$26 MG	Large creative retail/office space with high exposed ceilings, open area, excellent natural light with large window line facing 8th Street, full HVAC, shared common area with break room and kitchenette.
Suite 263	1,050 RSF +/-	\$24 MG	2nd floor office space, large open area, high ceilings, hardwood floors, phone booth, skylight.



STREET VIEW



PARKING



LOBBY



LOBBY

680 8TH STREET

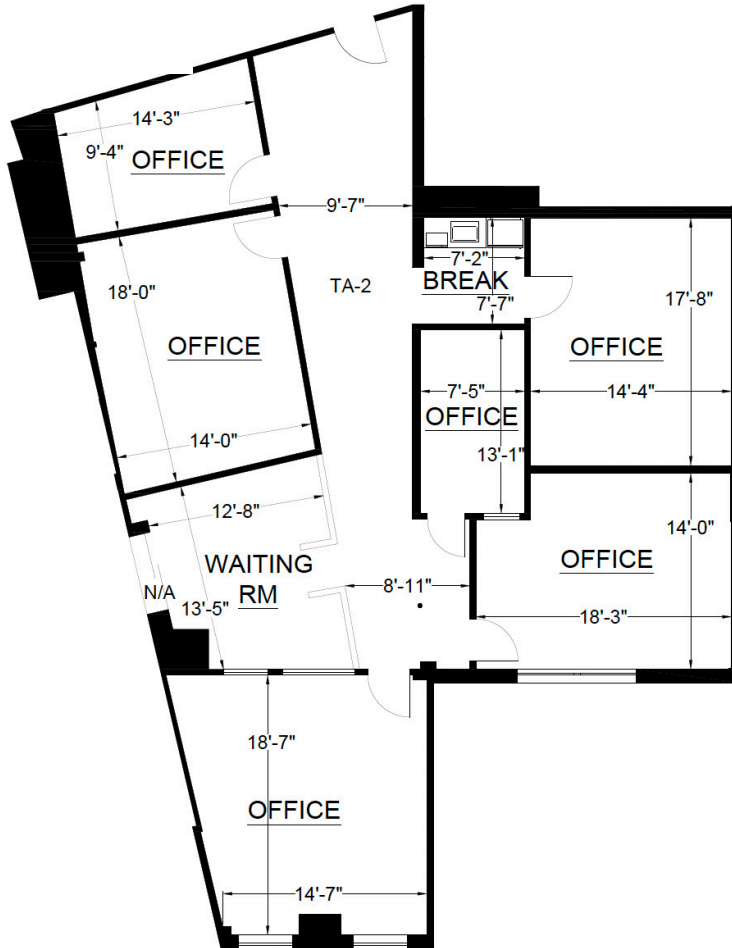


JAY D. SHAFFER | 415.407.3997
jshaffer@coltoncommercialsf.com
License #: 01444640

BRYAN B. COLTON | 415.595.6959
bryancolton@coltoncommercialsf.com
License #: 02111407

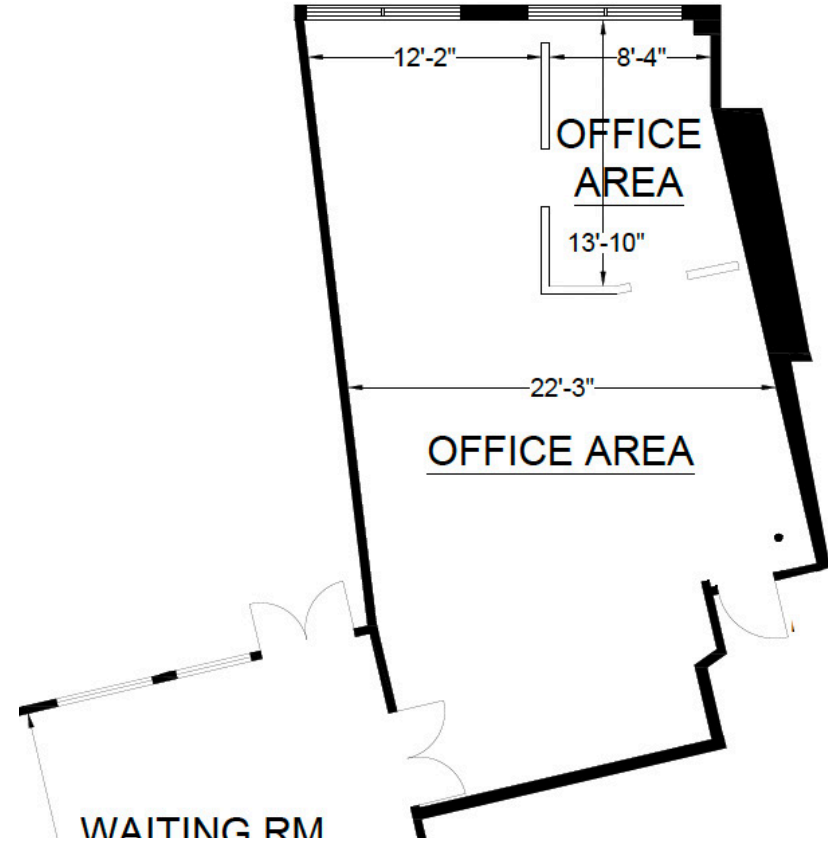
SUITE 230

2,406 +/- RSF



SUITE 240A

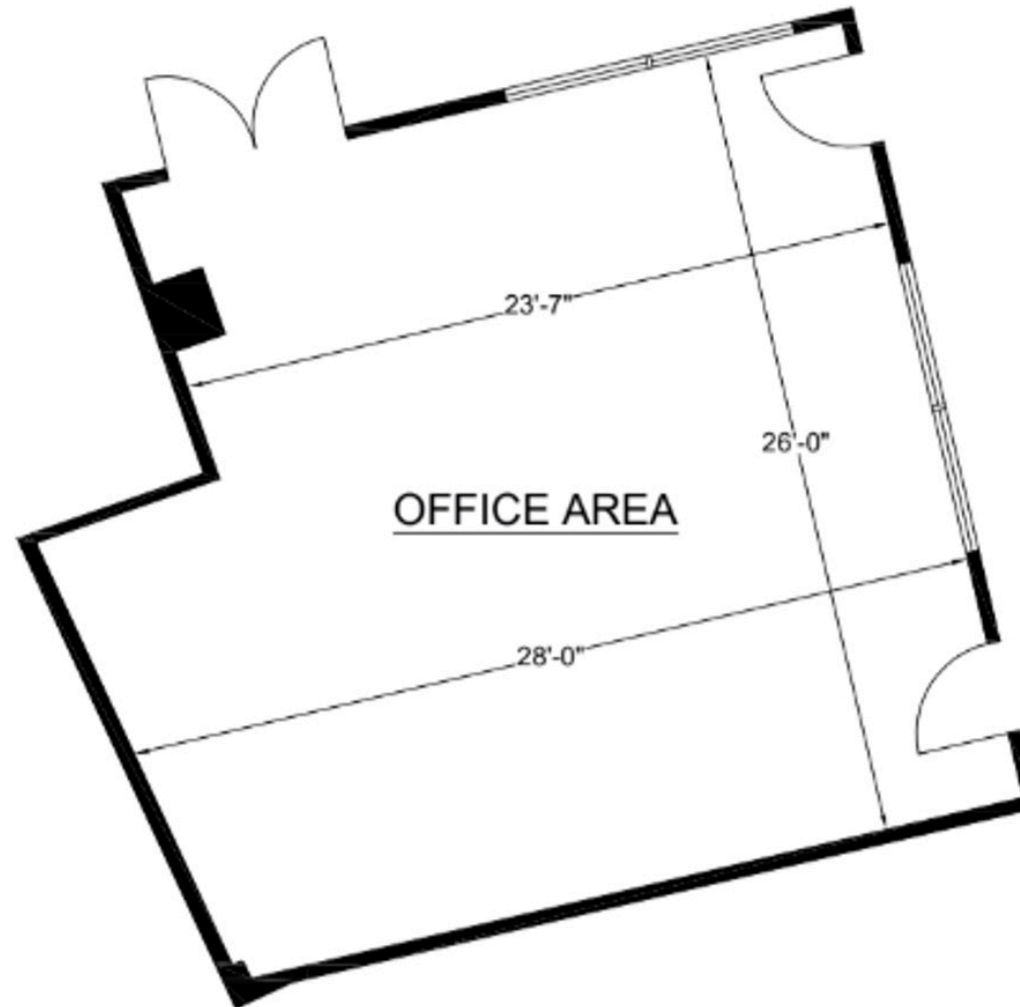
1,273 +/- RSF



DISCLOSURE: The foregoing is based upon information provided by others which we believe is accurate, however, no guarantee, warranty or representation is made. Colton Commercial & Partners, Inc. recommends that all interested parties independently verify its accuracy and completeness.

SUITE 263

1,051 +/- RSF



DISCLOSURE: The foregoing is based upon information provided by others which we believe is accurate, however, no guarantee, warranty or representation is made. Colton Commercial & Partners, Inc. recommends that all interested parties independently verify its accuracy and completeness.

NEIGHBORHOOD MAP

RESTAURANTS

- Okane
- Omakase
- Starbucks
- Niku Steakhouse
- Dumpling Time Design District
- Hello Banh Mi
- New Burma
- Okane

