

12 CORPORATE PLAZA

NEWPORT BEACH, CA

NOW AVAILABLE

Coworking Office Space

RW REDWOOD
WEST

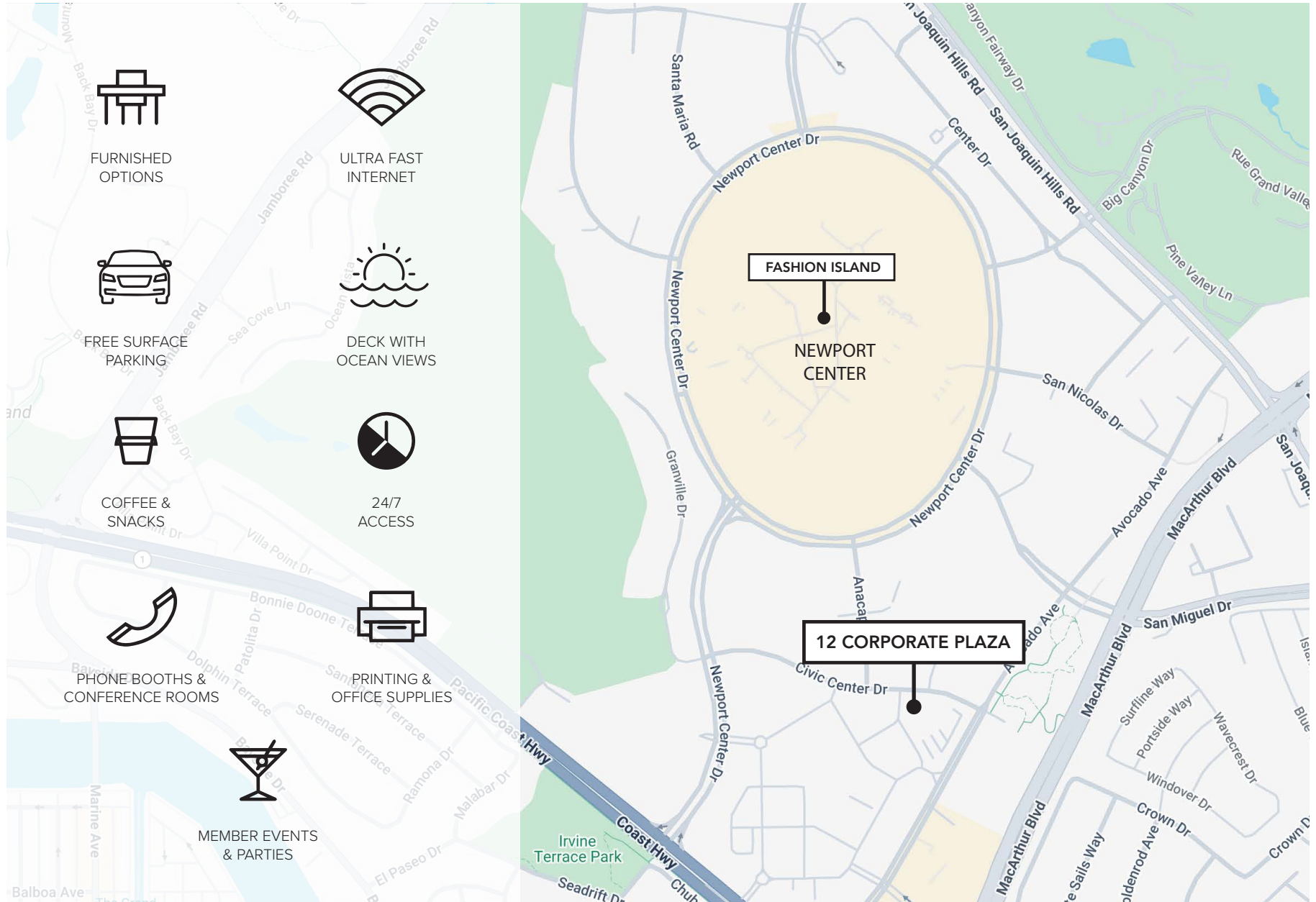
WELCOME TO

12 CORPORATE PLAZA

- 17,985 SF, 2-Story office building remodeled in 2012
- Prime frontage off Civic Center Drive and Avocado Ave
- Exclusive Corporate Plaza address
- Ample free surface parking
- Common outdoor kitchen, balcony with panoramic ocean views, fireplace, seating area and showers
- Convenient access to 55, 405 and 73 freeways
- Walking distance to Fashion Island, Civic Center and Corona Del Mar Plaza



Amenities



FURNISHED
OPTIONS



ULTRA FAST
INTERNET



FREE SURFACE
PARKING



DECK WITH
OCEAN VIEWS



COFFEE &
SNACKS



24/7
ACCESS



PHONE BOOTHS &
CONFERENCE ROOMS



PRINTING &
OFFICE SUPPLIES



MEMBER EVENTS
& PARTIES

FASHION ISLAND

NEWPORT
CENTER

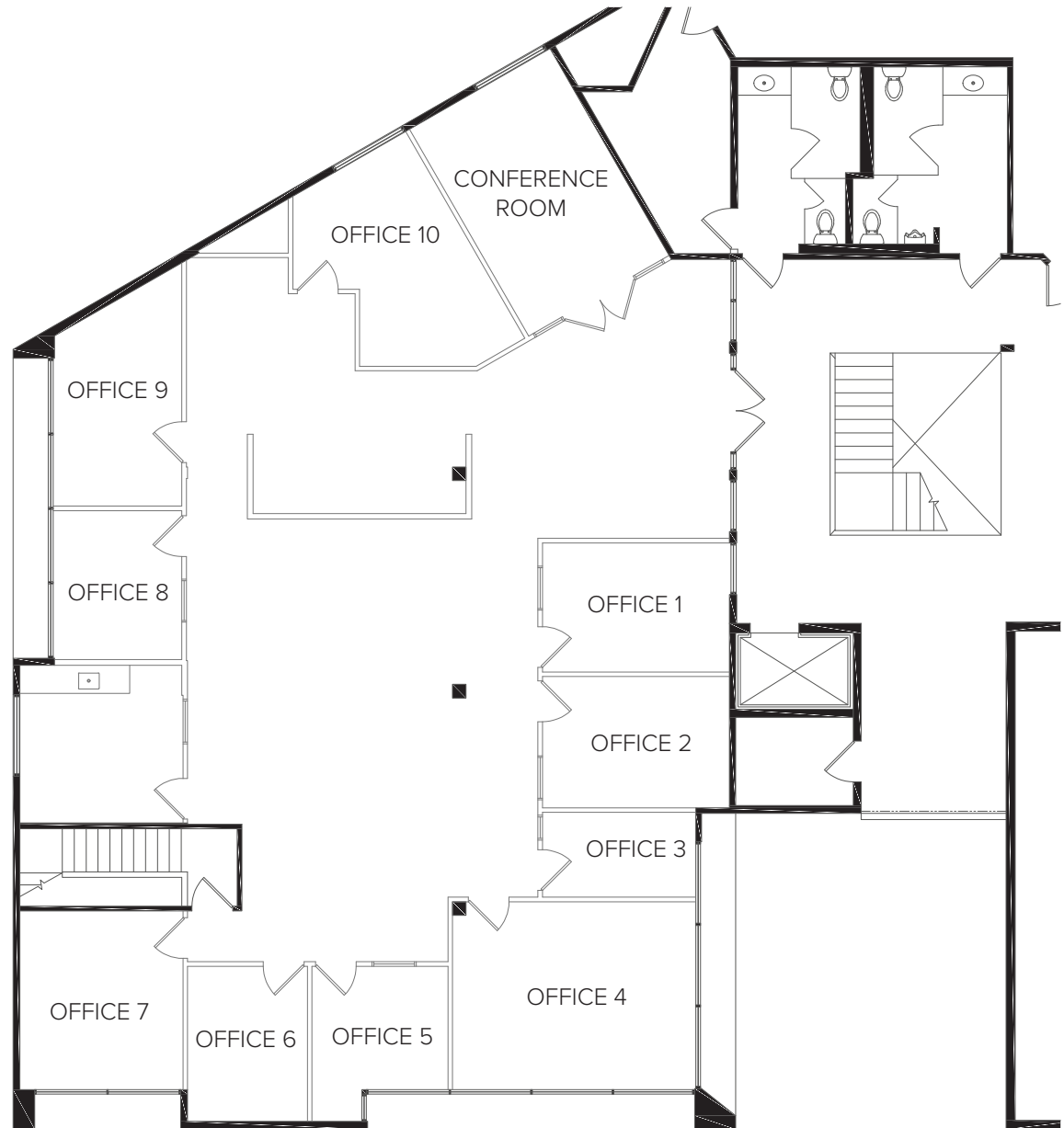
12 CORPORATE PLAZA

Suite 250

+/- 4,157 SF

MONTH TO MONTH PRICING

Office #1	\$1,500
Office #2	\$1,500
Office #3	\$1,100
Office #4	\$1,850
Office #5	\$1,750
Office #6	\$1,750
Office #7	\$1,800
Office #8	\$1,500
Office #9	\$1,550
Office #10	\$1,600
Per Cube	\$850





BALBOA ISLAND

LIDO MARINA VILLAGE

HOAG HOSPITAL

NEWPORT DUNES RESORT

NEWPORT BEACH COUNTRY CLUB

FASHION ISLAND

12 CORPORATE PLAZA

NEWPORT BEACH CIVIC CENTER