

INDUSTRIAL AND FLEX SUITES FOR LEASE IN SORRENTO MESA

9865 & 9885 MESA RIM ROAD

SAN DIEGO, CALIFORNIA 92121



Ryan Downing, SIOR

+1 858 546 5416

ryan.downing@cushwake.com

LIC #01955032

Trinity Carson

+1 619 928 6034

trinity.carson@cushwake.com

LIC #02343245



INDUSTRIAL AND FLEX SUITES FOR LEASE IN SORRENTO MESA

9865 & 9885 MESA RIM ROAD

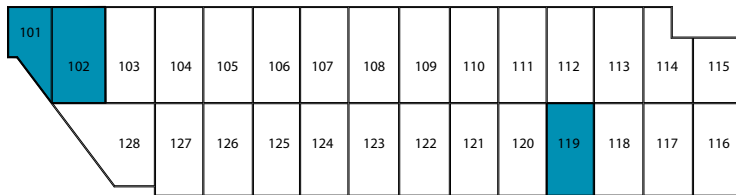
SAN DIEGO, CALIFORNIA 92121

PROPERTY HIGHLIGHTS

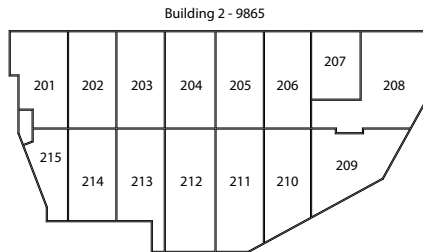
- Office, Flex, Industrial Suites
- Located in Sorrento Mesa
- Easy access to I-805 via Mira Mesa Blvd

AVAILABILITY

ADDRESS	SF	RENT	COMMENTS
9885 Mesa Rim Rd, Suite 101/102	1,966	\$1.80 IG	100% HVAC. Built out as office/flex space, lab space, and fume hood. 1 GL loading door. Available Now.
9885 Mesa Rim Rd, Suite 119	1,128	\$1.80 IG	Reception/open office, 1 restroom, balance warehouse. 1 GL loading door. Available Now.



Building 1 - 9885



Building 2 - 9865



Ryan Downing, SIOR
 +1 858 546 5416
 ryan.downing@cushwake.com
 LIC #01955032

Trinity Carson
 +1 619 928 6034
 trinity.carson@cushwake.com
 LIC #02343245



INDUSTRIAL AND FLEX SUITES FOR LEASE IN SORRENTO MESA

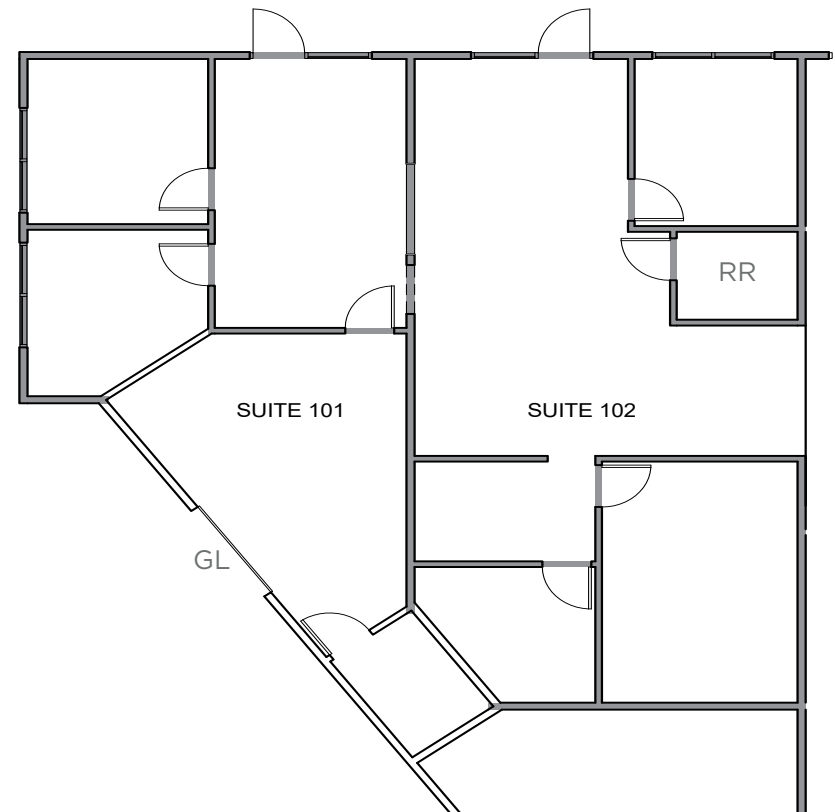
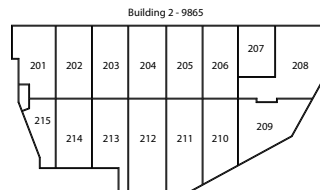
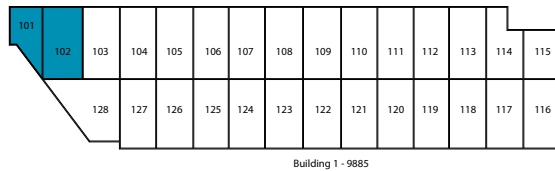
9865 & 9885 MESA RIM ROAD

SAN DIEGO, CALIFORNIA 92121

AVAILABLE SUITE

9885 Mesa Rim Rd, Suite 101/102

- Approx. 1,966 SF Available for lease
- 100% HVAC. Built out as office/flex space, lab space, and fume hood
- 1 GL loading door
- Available Now
- LEASE RATE: \$1.80/SF/Month, Industrial Gross



*FLOOR PLAN MAY NOT BE TO SCALE

Ryan Downing, SIOR
+1 858 546 5416
ryan.downing@cushwake.com
LIC #01955032

Trinity Carson
+1 619 928 6034
trinity.carson@cushwake.com
LIC #02343245



INDUSTRIAL AND FLEX SUITES FOR LEASE IN SORRENTO MESA

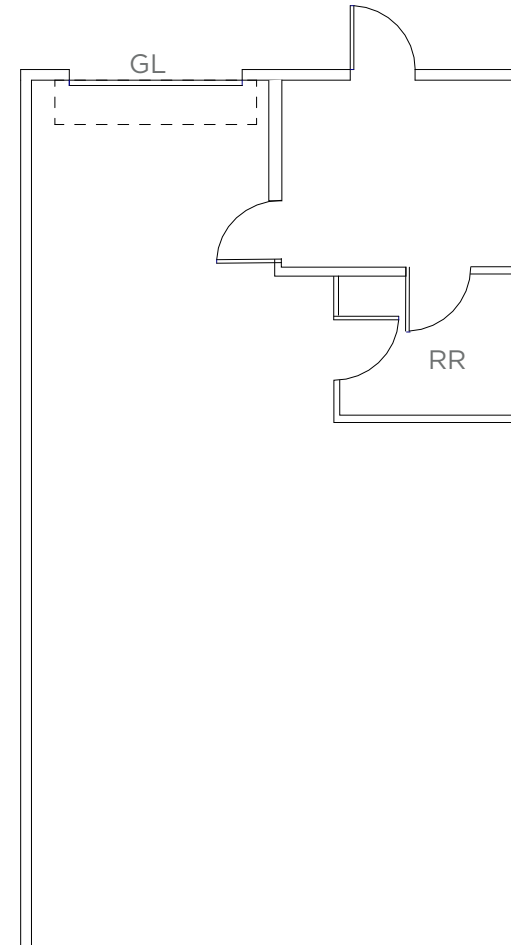
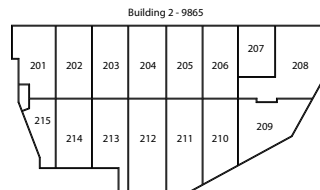
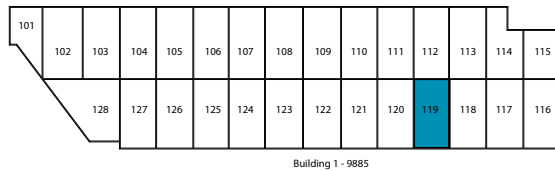
9865 & 9885 MESA RIM ROAD

SAN DIEGO, CALIFORNIA 92121

AVAILABLE SUITE

9885 Mesa Rim Rd, Suite 119

- Approx. 1,128 SF Available for lease
- Reception/open office, 1 restroom, balance warehouse
- 1 GL loading door
- Available Now
- LEASE RATE: \$1.80/SF/Month, Industrial Gross



*FLOOR PLAN MAY NOT BE TO SCALE

Ryan Downing, SIOR
+1 858 546 5416
ryan.downing@cushwake.com
LIC #01955032

Trinity Carson
+1 619 928 6034
trinity.carson@cushwake.com
LIC #02343245



INDUSTRIAL AND FLEX SUITES FOR LEASE IN SORRENTO MESA

9865 & 9885 MESA RIM ROAD

SAN DIEGO, CALIFORNIA 92121



©CUSHMAN & WAKEFIELD. ALL RIGHTS RESERVED. THIS INFORMATION HAS BEEN OBTAINED FROM SOURCES BELIEVED TO BE RELIABLE BUT HAS NOT BEEN VERIFIED. NO WARRANTY OR REPRESENTATION, EXPRESS OR IMPLIED, IS MADE AS TO THE CONDITION OF THE PROPERTY (OR PROPERTIES) REFERENCED HEREIN OR AS TO THE ACCURACY OR COMPLETENESS OF THE INFORMATION CONTAINED HEREIN, AND SAME IS SUBMITTED SUBJECT TO ERRORS, OMISSIONS, CHANGE OF PRICE, RENTAL OR OTHER CONDITIONS, WITHDRAWAL WITHOUT NOTICE, AND TO ANY SPECIAL LISTING CONDITIONS IMPOSED BY THE PROPERTY OWNER(S).

Ryan Downing, SIOR
+1 858 546 5416
ryan.downing@cushwake.com
LIC #01955032

Trinity Carson
+1 619 928 6034
trinity.carson@cushwake.com
LIC #02343245

