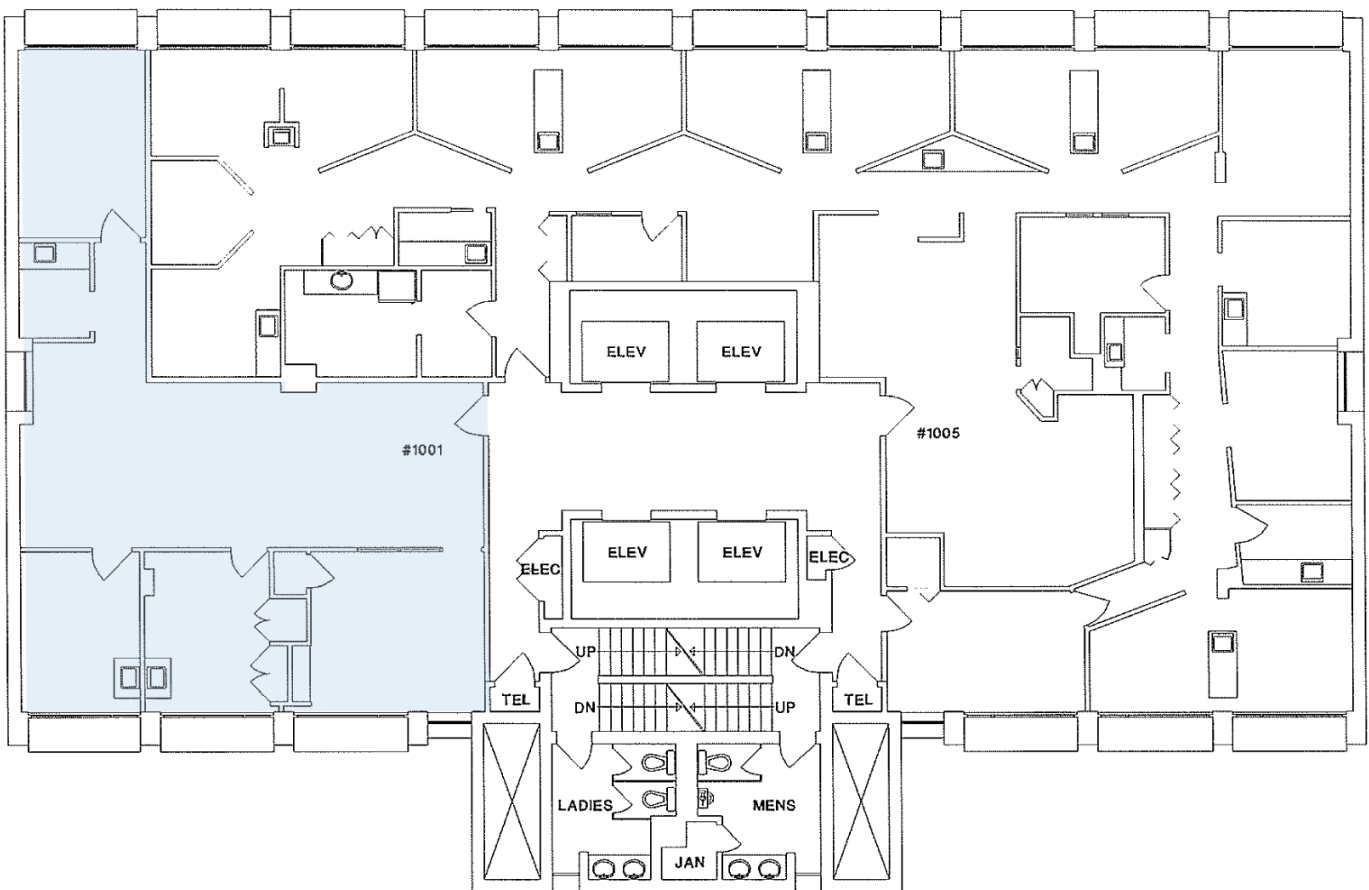


| Unit 1001

Rentable Area: 1,290 SF

Availability: Immediately

Built-out with 4 offices and a reception area.



LINDSAY KNOWLES
SENIOR LEASING MANAGER

778.875.2946

lknowles@warringtonpci.com

E. & O.E.: The information contained herein was obtained from sources which we deem reliable, and while thought to be correct, is not guaranteed by Warrington PCI Management.