

Reflections

Fiber Content
100% Recycled Polyester
50% Post-Consumer
44% Post-Consumer

Weight
10.25 oz./linear yard

Lightfastness
40 hours
Class 4

Cracking
3.0 wet
4.0 dry

Breaking Strength
235 lbs. wavy
132 lbs. filing

Tear Strength
30 lbs. wavy
34 lbs. filing

Pattern Width
66"

Product Application
Please see price list for availability by product. While every effort is maintained to ensure color and texture consistency, there may be slight variations between dye lots.

Ordering
For order accuracy, specify the fabric name, color name, and Allsteel color code. Example: Reflections Vanilla 781925

Cleaning
To prevent overall soiling, frequent vacuuming or light brushing to remove dust and grime is recommended. Spot clean with a mild detergent, an upholstery shampoo, or the foam from a mild detergent. Follow the specified Cleanability Code for cleaning agents.

Flammability
Please refer to the fabric specifications for compliance with most frequently required codes. For further information, contact your Allsteel Dealer or Allsteel Customer Support.

State of California Tech. Bulletin 117, Section E
ASTM E 84 (Flame Test) Class A or 1
Cleanability Code S

REPREVE
IT'S WHAT'S IN IT™

The fabric is made with REPREVE® polyester, a recycled fiber made with a minimum of 35% post-consumer bottles. It's the essential ingredient that makes products sustainable. Visit repreve.com to learn more.

Allsteel Inc.
Muscatine, Iowa 52761-0257
allsteel.com

Form 1-88 6/16 Rev. 1/16

CODE ANALYSIS: MEANS OF EGRESS - 2015 IBC

EXIT ACCESS TRAVEL DISTANCE (SEC 1017.1 / TABLE 1017.2): EXIT ACCESS TRAVEL DISTANCE IN GROUP B FULLY SPRINKLED BUILDING MAY NOT EXCEED 300'-0" MEASURED FROM THE MOST REMOTE POINT TO THE EXIT ACCESS. AS PLANNED THE EXIT ACCESS TRAVEL DISTANCE DOES NOT EXCEED 136'-3" FROM THE MOST REMOTE POINT IN THE TENANT SPACE TO THE FIRST AVAILABLE EXIT ACCESS, IN THIS CASE THE FIRE STAIR DOOR.

COMMON PATH OF TRAVEL (SEC 1006.2 / TABLE 1006.2.1): COMMON PATH OF TRAVEL IN GROUP B FULLY SPRINKLED BUILDING MAY NOT EXCEED 100'-0". AS PLANNED COMMON PATH OF TRAVEL DOES NOT EXCEED 65'-6".

DEAD ENDS (SEC 1020.4): IN GROUP B, FULLY SPRINKLED BUILDING, DEAD END CORRIDORS SHALL NOT EXCEED 50'-0". AS PLANNED THERE ARE NO DEAD END CORRIDORS IN THE SPACE.

EGRESS WIDTH (SEC 1005.3.2): IN GROUP B, FULLY SPRINKLED BUILDING, EGRESS WIDTH PER OCCUPANT EQUALS 0.15" FOR OTHER EGRESS COMPONENTS SUCH AS EXIT ACCESS DOORS AND CORRIDORS. WHERE MULTIPLE MEANS OF EGRESS EXIST, THEY WILL BE SIZED SO THAT THE LOSS OF ANY ONE MEANS OF EGRESS SHALL NOT REDUCE THE AVAILABLE CAPACITY TO LESS THAN 50% OF THE REQUIRED CAPACITY. PER SECTION 1008.1.1, MINIMUM DOOR SIZE SHALL NOT BE LESS THAN 32". ALL EXIT ACCESS DOORS AND EGRESS ACCESS DOORS PER THE PLAN HAVE A MINIMUM WITH OF 32" OR GREATER WHICH EXCEEDS 50% OF THE REQUIRED CAPACITY AS WELL AS THE 32" MINIMUM SIZE. ALL EGRESS CORRIDOR WIDTHS EXCEED 54".

CORRIDOR FIRE RESISTANCE RATING (TABLE 1020.1) PER THE TABLE, IN GROUP B FULLY SPRINKLED BUILDINGS, THE REQUIRED FIRE RESISTANCE RATING FOR CORRIDORS SERVING AN OCCUPANT LOAD GREATER THAN 30 PEOPLE IS 0 HRS.

NOTE: GC TO FURNISH & INSTALL NEW FIRE EXTINGUISHERS IN LOCATIONS PER THIS PLAN TO COMPLY W/ NFPA-10 AND SECTION 906 OF THE IBC.

NOTE: BUILDING PERMIT IS TO INCLUDE SYSTEMS FURNITURE PER THIS PLAN. MAXIMUM SYSTEMS FURNITURE PANEL HEIGHT TO BE 57" AFF. REFER TO DOCUMENT AT LEFT FOR FLAME SPREAD RATING INFORMATION.

OCCUPANCY LOAD CALCULATIONS: BASED UPON TABLE 1004.1.2

OCCUPANCY LOAD			
	SF	RATIO	TOTAL OCCUPANCY
6TH FLOOR			
BUSINESS AREAS - USE GROUP B	4,520	100	45
CONFERENCE / MEETING - USE GROUP A-3	1,133	15	76
TOTAL MIDCITY SUITE	5,653		121
BALANCE OF 6TH FLOOR TENANT SPACE - USES NOT KNOWN - USE GROUP B	5,737	100	57
TOTAL 6TH FLOOR TENANT SPACES	11,390		178

EGRESS WIDTH PER OCCUPANT CALCULATIONS BASED UPON SECTION 1005

STAIR DOOR WIDTH				STAIR WIDTH			
EXIT #1	INCHES	RATIO	OCCUPANCY	STAIR 1	INCHES	RATIO	OCCUPANCY
EXIT #1	34	0.15	227	STAIR 1	44	0.20	220
EXIT #2	34	0.15	227	STAIR 2	44	0.20	220
TOTAL ALLOWED			453	TOTAL ALLOWED			440

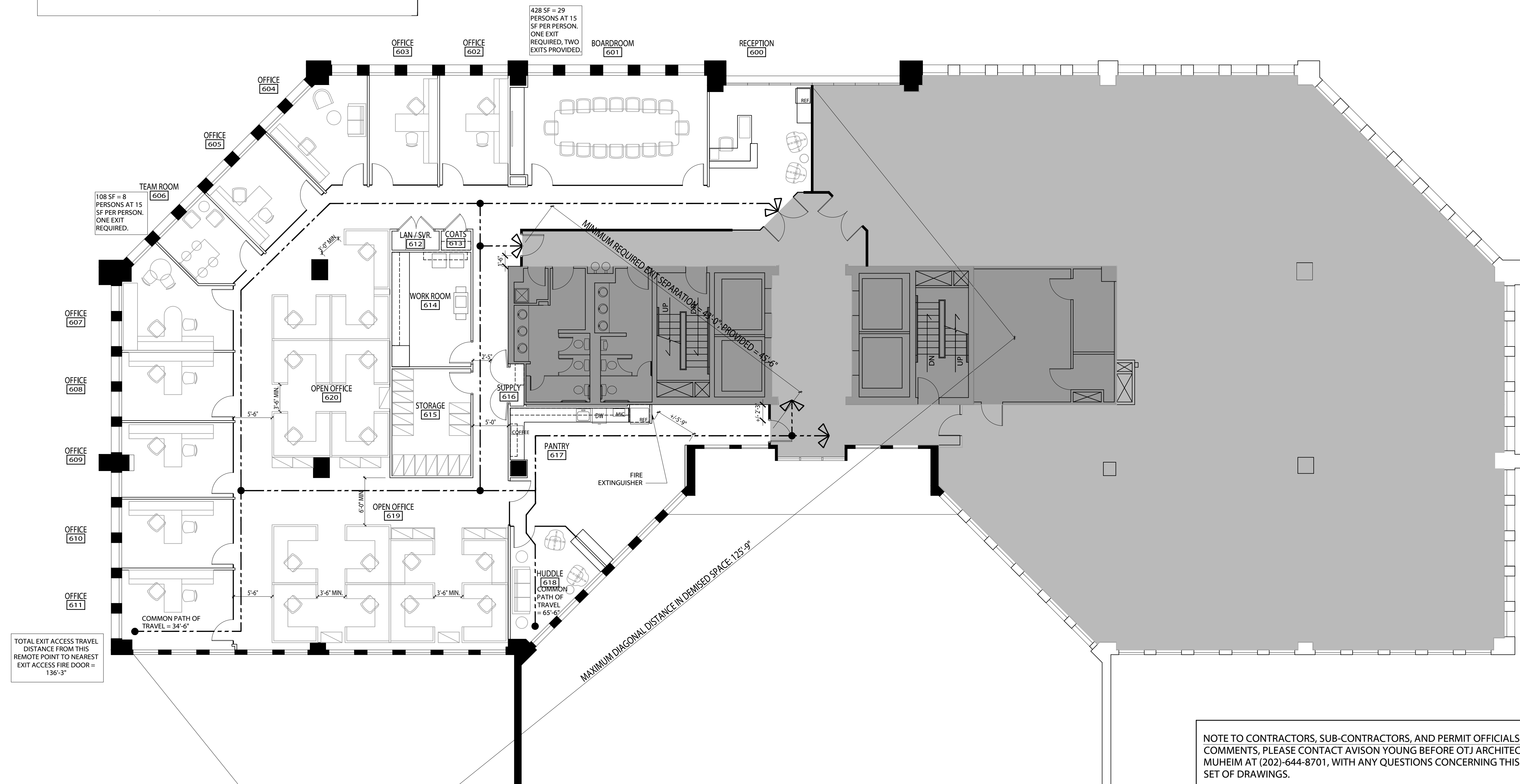
THE LESSER NUMBER TOTAL ALLOWED SHALL APPLY

PLUMBING FIXTURE COUNT BASED UPON TABLE 2902.1

USE GROUP = B

PROVIDED FIXTURES	# FIXTURES		OCC LOAD		RATIO	# FIXTURES	
	MEN	WOMEN	MEN	WOMEN		MEN	WOMEN
WC	2	3	89	89	50	2.78	2.78
URINAL	1	0	89	89			
LAV	3	3	89	89	80	2.11	2.11
DRINKING FOUNTAIN	2		178		100	1.78	
SERVICE SINK	1					1.00	

NOTE 1: PER SECTION 419.2 OF THE IPC, IN THE MEN'S ROOM, ONE URINAL IS SUBSTITUTED FOR WATER CLOSET. THE SUBSTITUTED URINAL IS LESS THAN 50% OF THE REQUIRED WC COUNT.



NOTE TO CONTRACTORS, SUB-CONTRACTORS, AND PERMIT OFFICIALS: FOR QUESTIONS OR COMMENTS, PLEASE CONTACT AVISON YOUNG BEFORE OTJ ARCHITECTS. PLEASE CALL MARK MUHEIM AT (202)-644-8701, WITH ANY QUESTIONS CONCERNING THIS PROJECT AND THIS SET OF DRAWINGS.

PROFESSIONAL CERTIFICATION:
I CERTIFY THAT THESE DOCUMENTS WERE PREPARED OR APPROVED BY ME,
AND THAT I AM A DULY LICENSED ARCHITECT UNDER THE LAWS OF THE STATE
OF MARYLAND, LICENSE NUMBER: 10274, EXPIRATION DATE: 06/30/2018.

05/15/17 PERMIT / BID
04/28/17 LANDLORD REVIEW
03/23/17 DESIGN DEVELOPMENT
01/25/17 DESIGN DEVELOPMENT

EGRESS PLAN

Drawing Scale
1/8" = 1'-0"

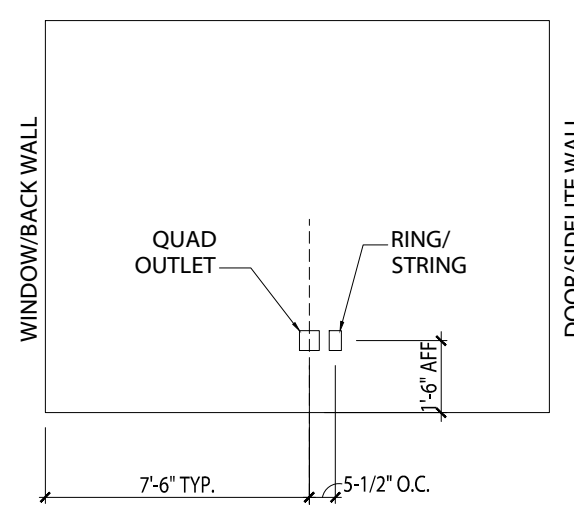
A000

Verify all dimensions and conditions at the site and report any discrepancies to O'BRIEN TRAVIS JACCARD, INC. before proceeding with the work.

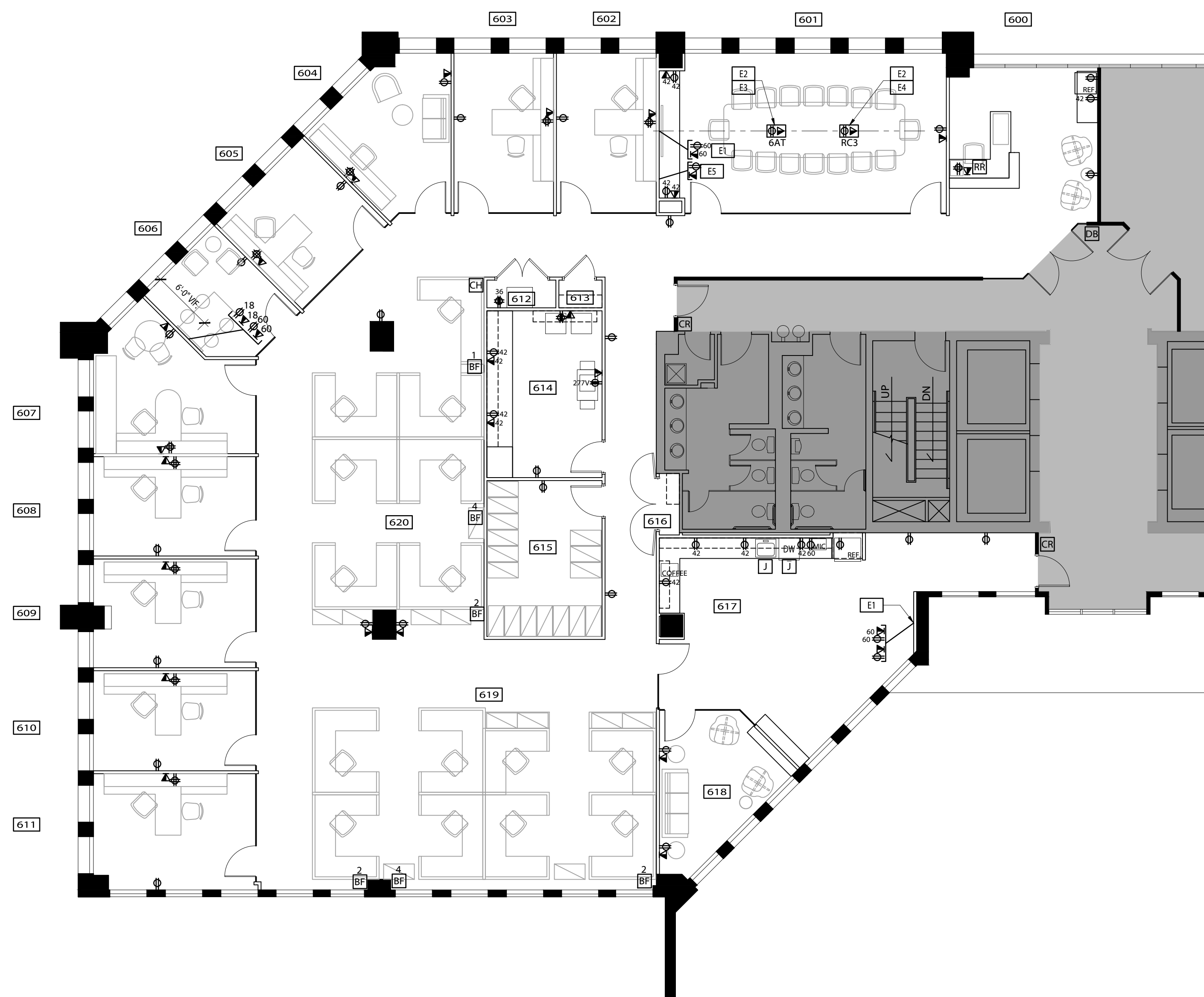
POWER & SIGNAL PLAN NOTES

- THE NUMBER ADJACENT TO A DEVICE SYMBOL INDICATES THE INSTALLATION HEIGHT ABOVE FINISH FLOOR MEASURED TO CENTERLINE OF DEVICE. IF THERE IS NO ADJACENT NUMBER, THE DEVICE IS TO BE MOUNTED @ 18" ABOVE FINISHED FLOOR.
- FOR QUAD OUTLETS AT EACH OFFICE: (2) PLUGS TO BE COMPUTER OUTLETS AND (2) OUTLETS TO BE STANDARD OUTLETS. COMPUTER OUTLETS TO BE NO MORE THAN (4) PER CIRCUIT.**
-ALL STANDARD OUTLETS ARE TO HAVE WHITE DEVICES.
-ALL COMPUTER OUTLETS ARE TO HAVE GRAY DEVICES.
-ALL COVER PLATES TO BE WHITE.
- FOR OUTLET DESCRIPTIONS REFER TO THE TELEPHONE/ELECTRIC/ & DATA PLAN LEGEND.
- FOR OUTLET LOCATIONS, THE ARCHITECTURAL TELEPHONE/ELECTRIC/ & DATA PLAN SUPERSEDES THE ENGINEERING ELECTRICAL PLAN.
- ALL NEW OUTLETS ABOVE MILLWORK ARE TO BE MOUNTED HORIZONTALLY.**
- FOR POWER REQUIREMENTS FOR ALL EQUIPMENT & APPLIANCES REFER TO ENGINEERING DRAWINGS.
- AT LOCATIONS WHERE NEW WALLS CONFLICT WITH EXISTING OUTLETS TO REMAIN, THE CONTRACTOR IS TO RELOCATE THE OUTLET AS REQUIRED TO MISS PARTITION CONSTRUCTION.
- PERIMETER WALLS, CORE WALLS, COLUMNS, PILASTERS AND OTHER EXISTING IMPROVEMENTS INTO WHICH DEVICES CANNOT REASONABLY BE INSTALLED ARE TO BE FURRED TO MINIMUM POSSIBLE DIMENSIONS AS REQUIRED TO ACCOMMODATE INSTALLATION OF NEW DEVICES IN LOCATIONS SHOWN ON THIS PLAN.
- ALL DEVICES SHOWN GROUPED ARE TO BE INSTALLED EQUALLY SPACED (APPROXIMATELY 5 1/2" O.C.) USING DEVICE SPACERS UNLESS OTHERWISE NOTED.
- PROVIDE G.F.I. OUTLETS WITHIN 8'-0" OF ALL NEW / EXISTING PANTRY OR RESTROOM WET FIXTURES.
- THE PLAN INCORPORATES AREAS OF OPEN CEILING. IN OPEN CEILING, ALL NEW ELECTRICAL WORK IS TO BE RUN IN A NEAT, ORDERLY FASHION, AT 90 DEGREE ANGLES OR 45 DEGREE ANGLES, CORRESPONDING TO THE SHAPE OF THE OPEN CEILING AND BUILDING.**
- AT NEW CORE DRILL LOCATIONS, TENANT BELOW HAS OPEN CEILING. GC RESPONSIBLE FOR RE-PAINTING / FINISHING AS REQUIRED AND FOR ALL PROTECTION DURING CORE DRILL & ELECTRICAL/PATHWAY INSTALLATION.**

- TYPICAL NOTES**
- CENTER IN WALL.
 - VERIFY LOCATION IN FIELD W/ ARCHITECT & FURNITURE VENDOR.
 - PROVIDE:
 - (1) 2" FLEX CONDUIT FOR VOICE / DATA WIRING
 - (1) 2" FLEX CONDUIT FOR A/V WIRING.
 - ALL CONDUITS RUN FROM FLOOR DEVICES AS SHOWN TO CONFERENCE ROOM SIDE WALL WHERE SHOWN AND EXTEND UP INTERIOR OF WALL AND STUB OUT ABOVE THE CEILING IN THE ROOM.
 - INCLUDE PULL STRINGS IN CONDUITS, TYP.
 - PROVIDE:
 - (1) 2" FLEX CONDUIT FOR VOICE / DATA WIRING
 - ALL CONDUITS RUN FROM FLOOR DEVICES AS SHOWN TO CONFERENCE ROOM SIDE WALL WHERE SHOWN AND EXTEND UP INTERIOR OF WALL AND STUB OUT ABOVE THE CEILING IN THE ROOM.
 - INCLUDE PULL STRINGS IN CONDUITS, TYP.
 - DEVICES IN WALL AT 18" AFF FOR TENANT'S AUDIOVISUAL EQUIPMENT. GC TO PROVIDE CUTOUT IN MILLWORK FOR ACCESS.
- NOTES PLAN SPECIFIC**



TYPICAL OFFICE ELEVATION AT DESK WALL
SCALE: 1/4" = 1'-0"



POWER & SIGNAL PLAN LEGEND

- ⊕ NEW DUPLEX ELECTRICAL OUTLET.
- ⊕ NEW DEDICATED DUPLEX ELECTRICAL OUTLET.
- ⊕ NEW DEDICATED QUADRAPLEX ELECTRICAL OUTLET.
- ⊕ NEW QUADRAPLEX ELECTRICAL OUTLET.
- ⚡ NEW TELEPHONE/DATA RECEPTACLE. CONTRACTOR TO PROVIDE SINGLE GANG RING & TWO PULL STRINGS. IN WALLS WITH INSULATION, PROVIDE (1) 3/4" CONDUIT STUBBED ABOVE WALL. CABLING & COVERPLATES ARE TO BE PROVIDED AND INSTALLED BY TENANT'S VENDOR.
- Ⓜ NEW COMBINATION TELEPHONE, DATA, POWER RECEPTACLE IN FLOOR MONUMENT OR POKE-THROUGH. REFER TO ENGINEERING DRAWINGS. DEVICE TO BE WIREMOLD RC3ATCBK.
- Ⓜ NEW COMBINATION TELEPHONE, DATA, POWER RECEPTACLE IN FLOOR POKE-THROUGH DEVICE. REFER TO ENGINEERING DRAWINGS FOR ADDITIONAL INFORMATION. DEVICE TO BE WIREMOLD EVOLUTION SERIES 6ATCPAVBK. GC TO PROVIDE ADDITIONAL CENTER MOUNT DEVICE PLATE 6MAAP2A AND SIDE MOUNT PLATE 682A.
- J NEW JUNCTION BOX.
- BF NEW TELEPHONE/DATA AND ELECTRICAL BASE FEED DEVICE FOR SYSTEMS FURNITURE. CONTRACTOR TO PROVIDE SINGLE GANG RING & PULL STRING. IN WALLS WITH INSULATION, PROVIDE (1) 3/4" CONDUIT STUBBED ABOVE WALL. CABLING & COVERPLATES ARE TO BE PROVIDED AND INSTALLED BY TENANT'S VENDOR. EXACT LOCATION OF BASE FEED TO BE DETERMINED IN THE FIELD BY TENANT'S FURNITURE INSTALLER TO MEET ALL APPLICABLE CODES.
- 2 — DENOTES QUANTITY OF STATIONS TO BE FED WITH POWER AND VOICE / DATA CABLING.
- DB DOOR BELL BUTTON. VERIFY FINAL LOCATION W/ LANDLORD AND ARCHITECT PRIOR TO INSTALLATION.
- CH DOOR CHIME. INSTALL AT 84" AFF.
- CR CARD READER BY TENANT'S SECURITY VENDOR. GC TO PROVIDE A SINGLE GANG RING AND PULL STRING AT THIS LOCATION.
- RR REMOTE RELEASE BY TENANT'S SECURITY VENDOR.

NOTE TO CONTRACTORS, SUB-CONTRACTORS, AND PERMIT OFFICIALS: FOR QUESTIONS OR COMMENTS, PLEASE CONTACT AVISON YOUNG BEFORE OTJ ARCHITECTS. PLEASE CALL MAX MUHEIM AT (202)-644-8701, WITH ANY QUESTIONS CONCERNING THIS PROJECT AND THIS SET OF DRAWINGS.

PROFESSIONAL CERTIFICATION:
I CERTIFY THAT THESE DOCUMENTS WERE PREPARED OR APPROVED BY ME,
AND THAT I AM A DULY LICENSED ARCHITECT UNDER THE LAWS OF THE STATE
OF MARYLAND, LICENSE NUMBER: 10226, EXPIRATION DATE: 06/30/2018.

05/15/17 PERMIT / BID
04/28/17 LANDLORD REVIEW
03/23/17 DESIGN DEVELOPMENT
01/25/17 DESIGN DEVELOPMENT

ELECTRICAL
PLAN

Drawing Scale
1/8" = 1'-0"

A003

Verify all dimensions and conditions at the site and report any discrepancies to O'BRIEN TRAVIS JACCARD, INC. before proceeding with the work.