

NUNNALLY VILLAGE

NOW LEASING: RETAIL

HULL ST RD &
OTTERDALE RD
CHESTERFIELD, VA
23832

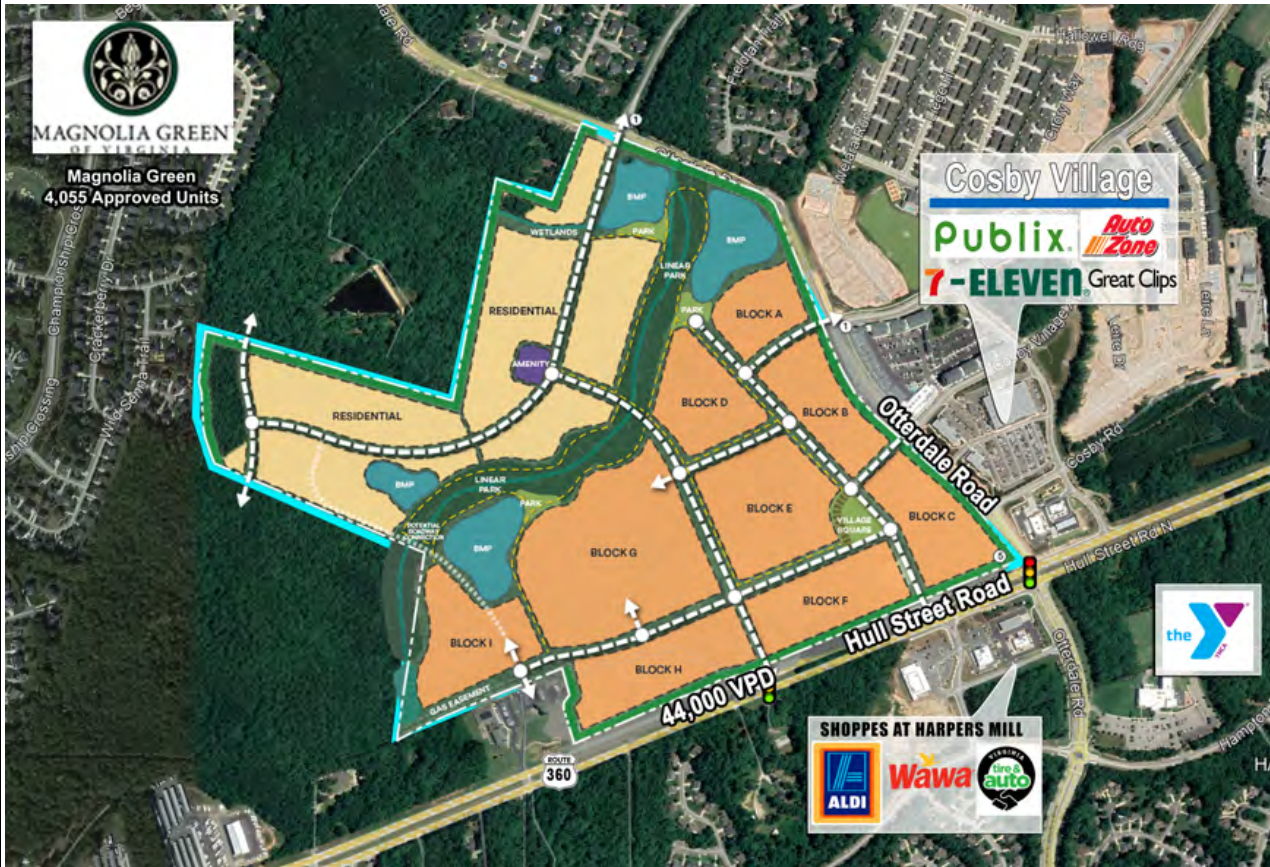
FEATURES

- Nunnally Village is a planned 208-acre mixed-use development located at the corner of Hull Street Road & Otterdale Road. Near West Area High School future site.
- Chesterfield is the fastest growing county in Virginia.
- Prime location with high visibility and easy access from major roadways.
- Pad sites, shop space, anchor, and junior anchor space available for lease.
- Ground lease or build to suit options.
- Road frontage along Hull Street Road & Otterdale Road Available.
- 77,000 VPD on Hull Street Road, just east of the site.
- High growth corridor with average household income of \$138,000.

RETAIL SPACE 1,500 to 100,000+ SF
LEASE RATE Ask Agent

DEMOGRAPHICS	3 Mile	5 Mile	10 Mile
2023 Population	39,503	74,990	184,807
Avg HH Income	\$137,999	\$134,974	\$121,592
Total Households	12,971	26,100	67,302
Traffic Count	44,000 VPD on Hull Street Road		

* Detailed demographics upon request



FOR MORE INFORMATION CONTACT:

Ellen Long:
804.864.9788 Ext. 101 (o)
804-539-7793 (m)
ellenlong@taylorlongproperties.com

Robert Marshall:
804-864-9788, Ext. 102 (o)
804-437-4323 (m)
robertmarshall@taylorlongproperties.com

Taylor Long
PROPERTIES
Commercial Real Estate

NUNNALLY VILLAGE

NOW LEASING: RETAIL

HULL ST RD &
OTTERDALE RD
CHESTERFIELD, VA
23832

PROPOSED CONCEPT PLAN



NUNNALLY VILLAGE

NOW LEASING: RETAIL

HULL ST RD &
OTTERDALE RD
CHESTERFIELD, VA
23832

AREA RETAILERS

