

FAIRWAY PLAZA

19708 - 19772
COLIMA RD.

ROWLAND
HEIGHTS, CA



 EAST WEST BANK

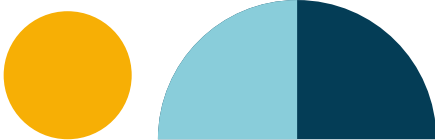
 STATER
BROS.
MARKETS

charles
SCHWAB

±960 SF – ±1,321 SF AVAILABLE FOR LEASE

CBRE

Fairway Plaza is a Stater Bros. anchored center located near the junction of two major freeways (60/57). The center is located in Rowland Heights below the picturesque chain of Puente Hills and located in the greater San Gabriel Valley within Los Angeles County.



PROPERTY HIGHLIGHTS



±960 SF – ±1,321 SF available



Convenient access to the 57 and 60 Freeways



Abundant exclusive parking and five ingress/egress driveways for easy customer access



Excellent tenant mix of daily needs and services



Located on a four-way signalized intersection



Prominent monument and building signage



Anchored by Stater Bros. Market, East West Bank and six specialty restaurants

SITE PLAN



TRAFFIC COUNTS



WEEKLY TRAFFIC

Weekday: **69%**

Weekend: **31%**

VISITOR BY ORIGIN

Local (within 75 miles): **89%**

Regional (outside of 75 miles): **11%**

VISITOR HOME LOCATION

Rowland Heights: **35%**

Walnut: **16%**

Diamond Bar: **7%**

TOP TRAFFIC MONTH

May

AVG. DWELL TIME

38 minutes

REPEAT VISITORS

22% Two Or More Visits

DRIVE DISTANCE

60% of Customers
within 10 Drive Miles

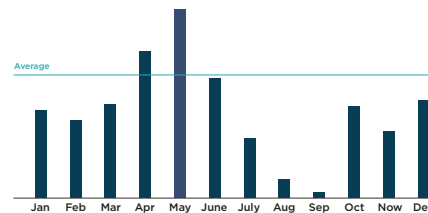
TOP TAPESTRY SEGMENTS

Pacific Heights: **49%**

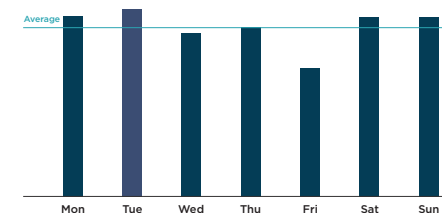
Urban Villages: **12%**



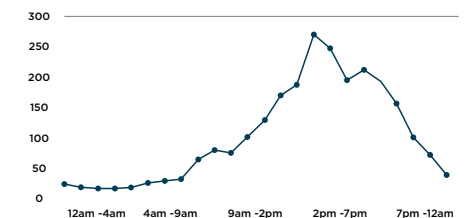
TRAFFIC BY MONTH



TRAFFIC BY DAY



TRAFFIC BY HOUR



THE AREA



LA PUENTE

SOUTH SAN JOSE HILLS

FAIRWAY PLAZA

57

60

60

Major Regional Center

Winchell's
citi
BANK OF AMERICA
USPS.COM Exxon Mobil

BMO

Western Union
FedEx
EASTWEST BANK

Jack in the box
Pizza Hut
Chevron

Fairway Plaza
STATER BROS. markets
EASTWEST BANK

Canyon Point Marketplace
DAISO SUBWAY
168 超級市場 MARKET. UPS McDonald's Starbucks

DEMOGRAPHICS

	1 Mile	3 Miles	5 Miles
Population	14,092	107,602	260,636
Daytime Population	12,882	108,160	260,068
Average HH Income	\$125,795	\$126,525	\$136,081

ROWLAND HEIGHTS

FAIRWAY PLAZA

19708 - 19772
COLIMA RD.

ROWLAND
HEIGHTS, CA



FOR MORE INFORMATION, PLEASE CONTACT:

Brian Yoshimura

+1 818 502 6736

Lic. 01967227

brian.yoshimura@cbre.com

Geoff Martin

+1 818 502 6739

Lic. 01180819

geoff.martin@cbre.com

Ryan Burnett

+1 818 502 6791

Lic. 01481691

ryan.burnett@cbre.com

CBRE

© 2025 CBRE, Inc. CBRE, Inc. All rights reserved. This information has been obtained from sources believed reliable but has not been verified for accuracy or completeness. CBRE, Inc. makes no guarantee, representation or warranty and accepts no responsibility or liability as to the accuracy, completeness, or reliability of the information contained herein. You should conduct a careful, independent investigation of the property and verify all information. Any reliance on this information is solely at your own risk. CBRE and the CBRE logo are service marks of CBRE, Inc. All other marks displayed on this document are the property of their respective owners, and the use of such logos does not imply any affiliation with or endorsement of CBRE. Photos herein are the property of their respective owners. Use of these images without the express written consent of the owner is prohibited.