

# FOR LEASE:

## PRIME RETAIL PROPERTY

26 O'Farrell Street, San Francisco



Secure your flagship store in San Francisco's Union Square with flexible, percentage-based rent terms, joining elite retailers without upfront investment

Contact us today for a tour



**Mark Kaplan**

Broker, CCIM

**ROCKWELL PROPERTIES**

415 552 6900

Mark@Rockwellproperties.com

Lic. 00872023



**Abe Sharma**

Broker, MBA

**AV BROKERAGE**

978 273 3952

asharma8080@gmail.com

Lic. 02221131

# Why Lease with Us?

- ✓ Prime Location: Lease a Union Square spot with unmatched visibility, shifting from \$55,000 NNN pre-pandemic to a percentage rent model.
- ✓ Flagship Support: Build your flagship and national brand, paying only a percentage of gross income, aligning our success with yours.
- ✓ Flexible Terms: Be among the first to return, with deferred rent until opening and increases tied to income growth.
- ✓ Join the Elite Retailers: Enter the prestigious circle of top retailers without upfront investment.

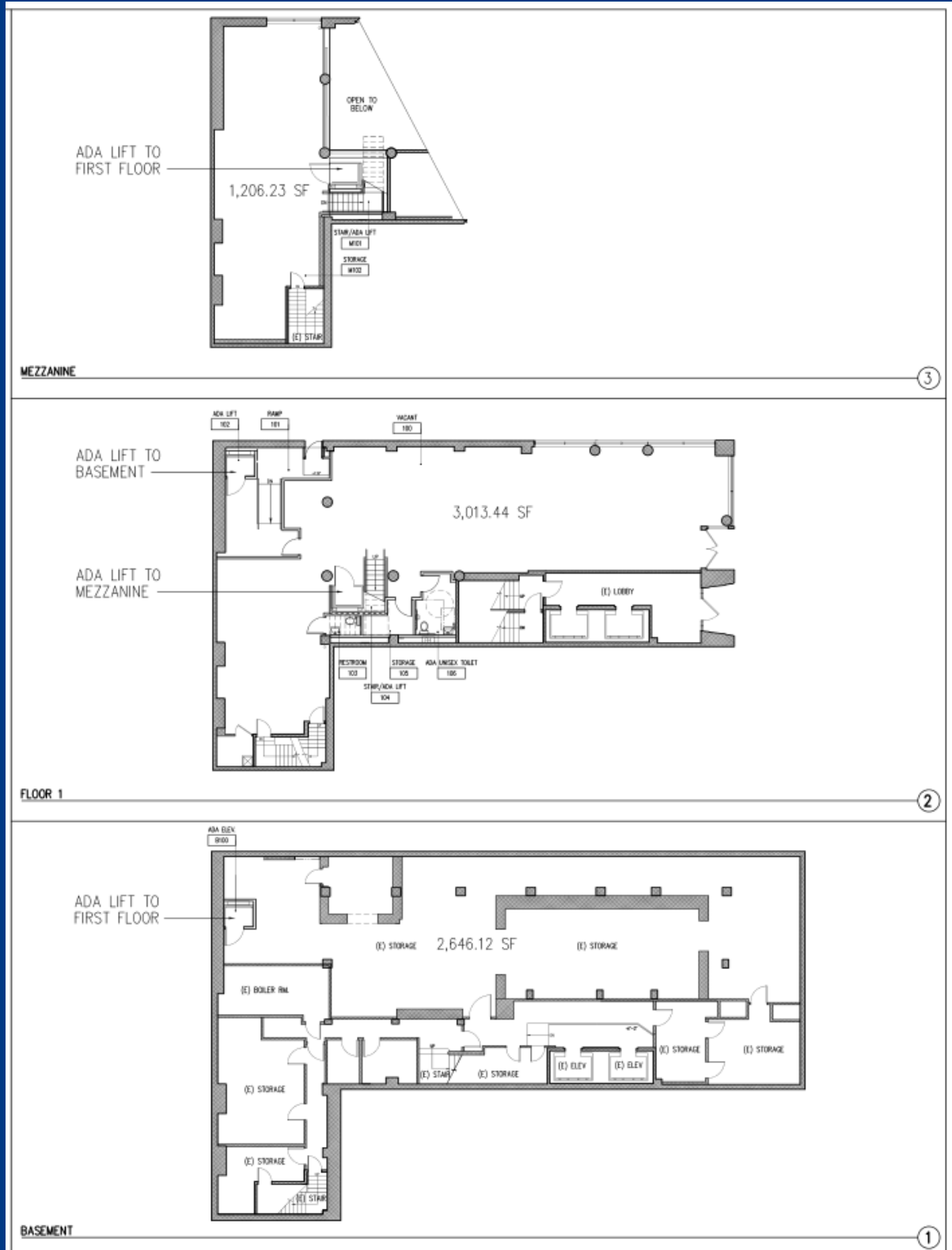


# Property Highlights

- ✓ Specifications: 4,249 sq ft area with 20-foot ceilings and over 60 feet of frontage for excellent exposure.
- ✓ Visibility: Three-story blade sign visible from multiple blocks.
- ✓ Loading: Convenient loading access from the side alley.
- ✓ Flexible Design: Interior configurations can be adapted to suit various retail concepts.



# 26 O'Farrell Floor Plan



For more information, please contact:



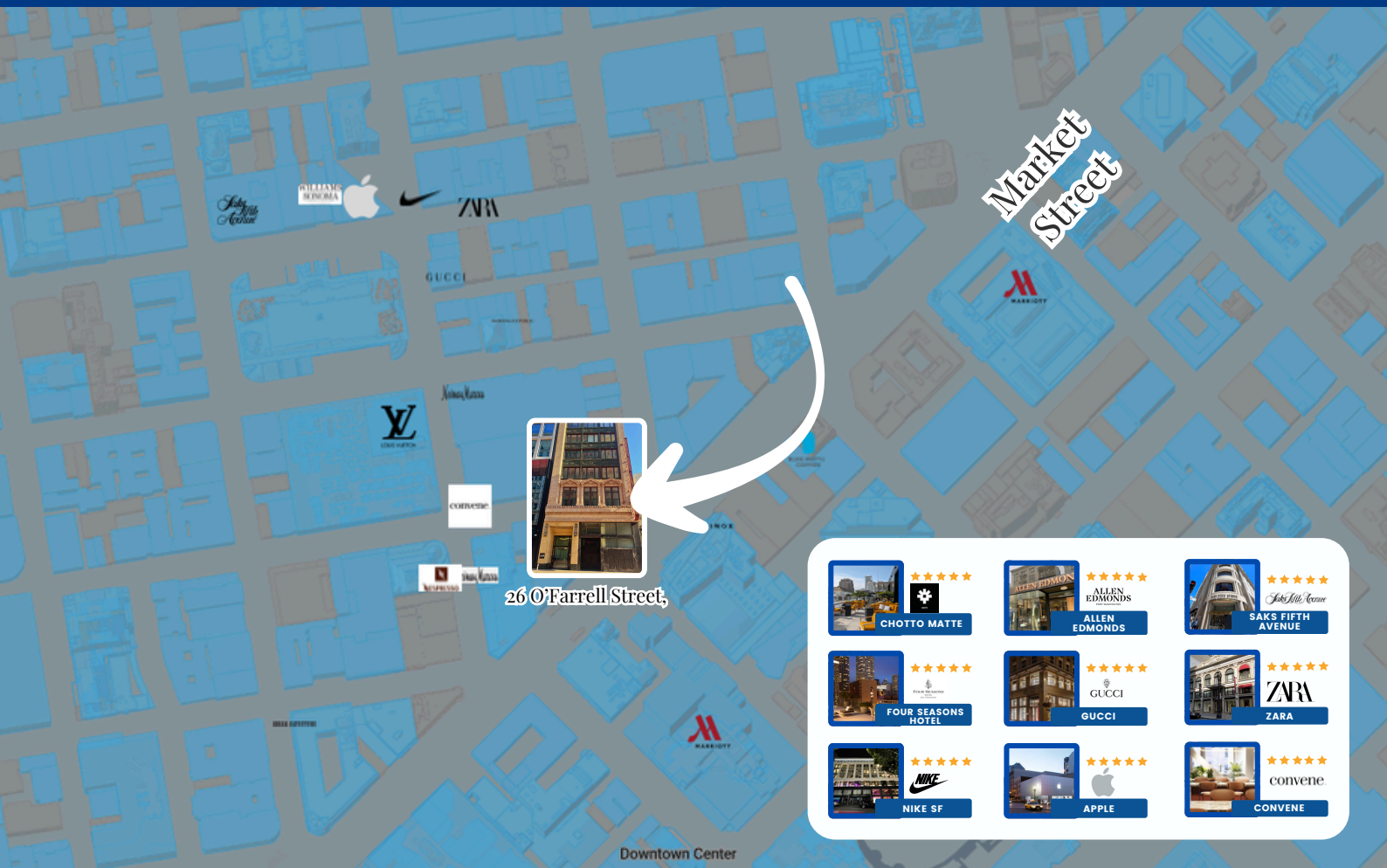
**Mark Kaplan**  
Broker, CCIM  
**ROCKWELL PROPERTIES**  
415 552 6900  
Mark@Rockwellproperties.com  
Lic. 00872023



**Abe Sharma**  
Broker, MBA  
**AV Brokerage**  
978 273 3952  
asharma8080@gmail.com  
Lic. 02221131

# World Class Location

- Transportation: Close to major transit lines including BART, Main Market Street and Muni lines
- Hotels: Nearby high-end hotels like Four Seasons, Marriott Marquis, and Hyatt Regency
- Dining: Surrounded by popular restaurants and cafes such as Chotto Matte, Ippudo, and Blue Bottle Coffee
- Accessibility: Exceptional Walk Score of 99, Transit Score of 100, and Bike Score of 88



For more information, please contact:



**Mark Kaplan**

Broker, CCIM

**ROCKWELL PROPERTIES**

415 552 6900

Mark@Rockwellproperties.com

Lic. 00872023



**Abe Sharma**

Broker, MBA

**AV BROKERAGE**

978 273 3952

asharma8080@gmail.com

Lic. 02221131