



100 WEST FRANKLIN STREET, RICHMOND, VA 23220

100 WEST FRANKLIN STREET, RICHMOND, VA 23220

CHESTERMAN PLACE



DIVARIS REAL ESTATE INC // 200 SOUTH 10TH STREET, SUITE 1010, RICHMOND, VA 23219 // DIVARIS.COM

CHESTERMAN PLACE

100 WEST FRANKLIN STREET, RICHMOND, VA 23220

PROPERTY SUMMARY



PROPERTY DESCRIPTION

Office Space for Lease

PROPERTY HIGHLIGHTS

- Historic building at one of Richmond's most prestigious business addresses
- Class A Buildout with a spectacular view of the Jefferson Hotel
- Ample nearby parking and easy access onto I-95, I-64 and Downtown Expressway
- Convenient to the VCU Campus and State Capitol and within walking distance are the YMCA, Library and many of downtown Richmond's finest restaurants
- Competitive rental rates and flexible lease terms

OFFERING SUMMARY

Lease Rate:	\$16.50 - 18.50 SF/yr (Full Service)
Available SF:	4,310 - 7,951 SF
Building Size:	36,988 SF

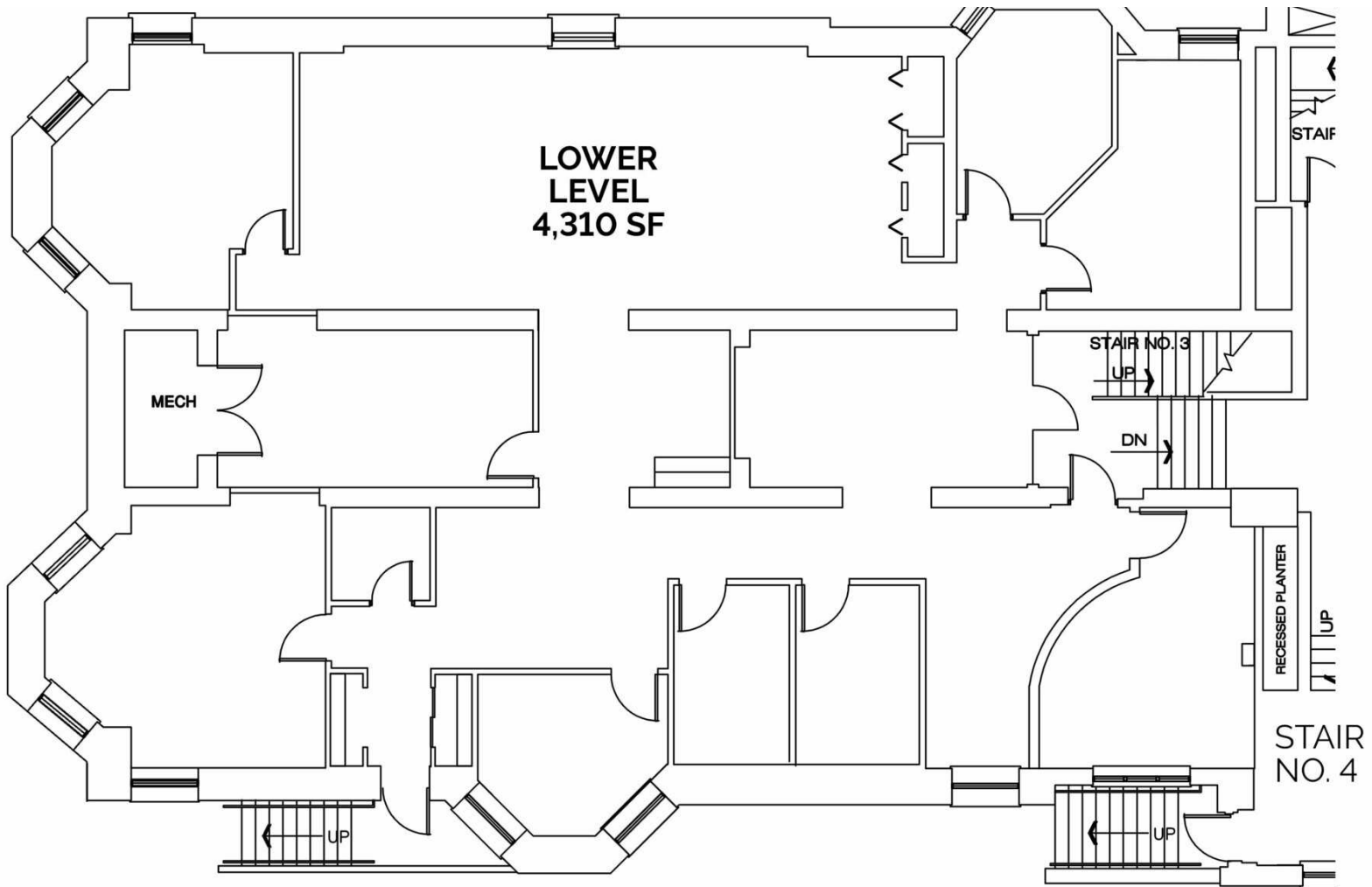
DEMOGRAPHICS

	1 MILE	3 MILES	5 MILES
Total Households	6,762	53,410	103,144
Total Population	18,625	128,526	246,157
Average HH Income	\$39,449	\$50,999	\$55,009

CHESTERMAN PLACE

100 WEST FRANKLIN STREET, RICHMOND, VA 23220

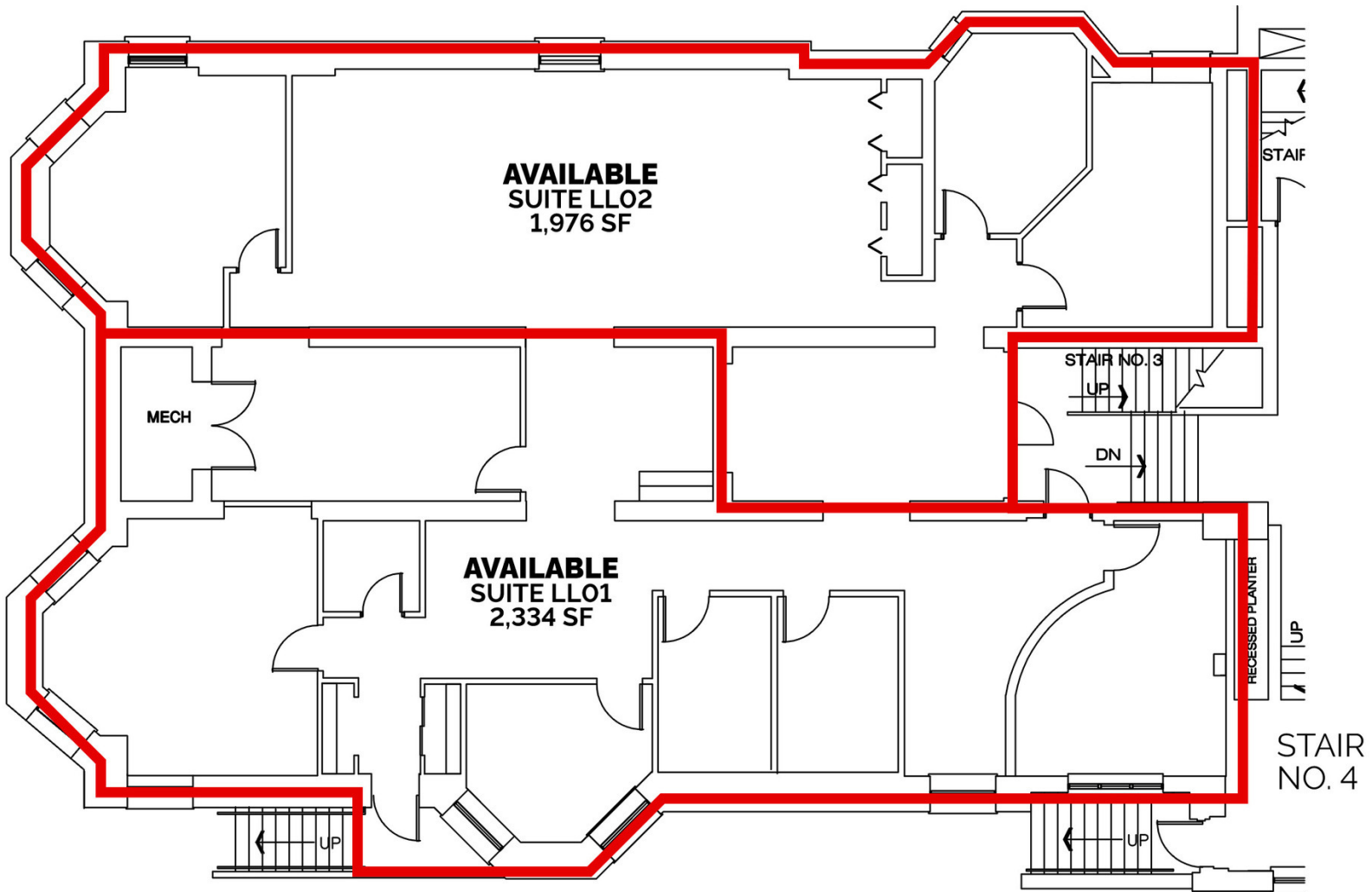
LOWER LEVEL



CHESTERMAN PLACE

100 WEST FRANKLIN STREET, RICHMOND, VA 23220

SITE PLAN



CHESTERMAN PLACE

100 WEST FRANKLIN STREET, RICHMOND, VA 23220

PARKING AERIAL



DIVARIS REAL ESTATE INC // 200 SOUTH 10TH STREET, SUITE 1010, RICHMOND, VA 23219 // DIVARIS.COM

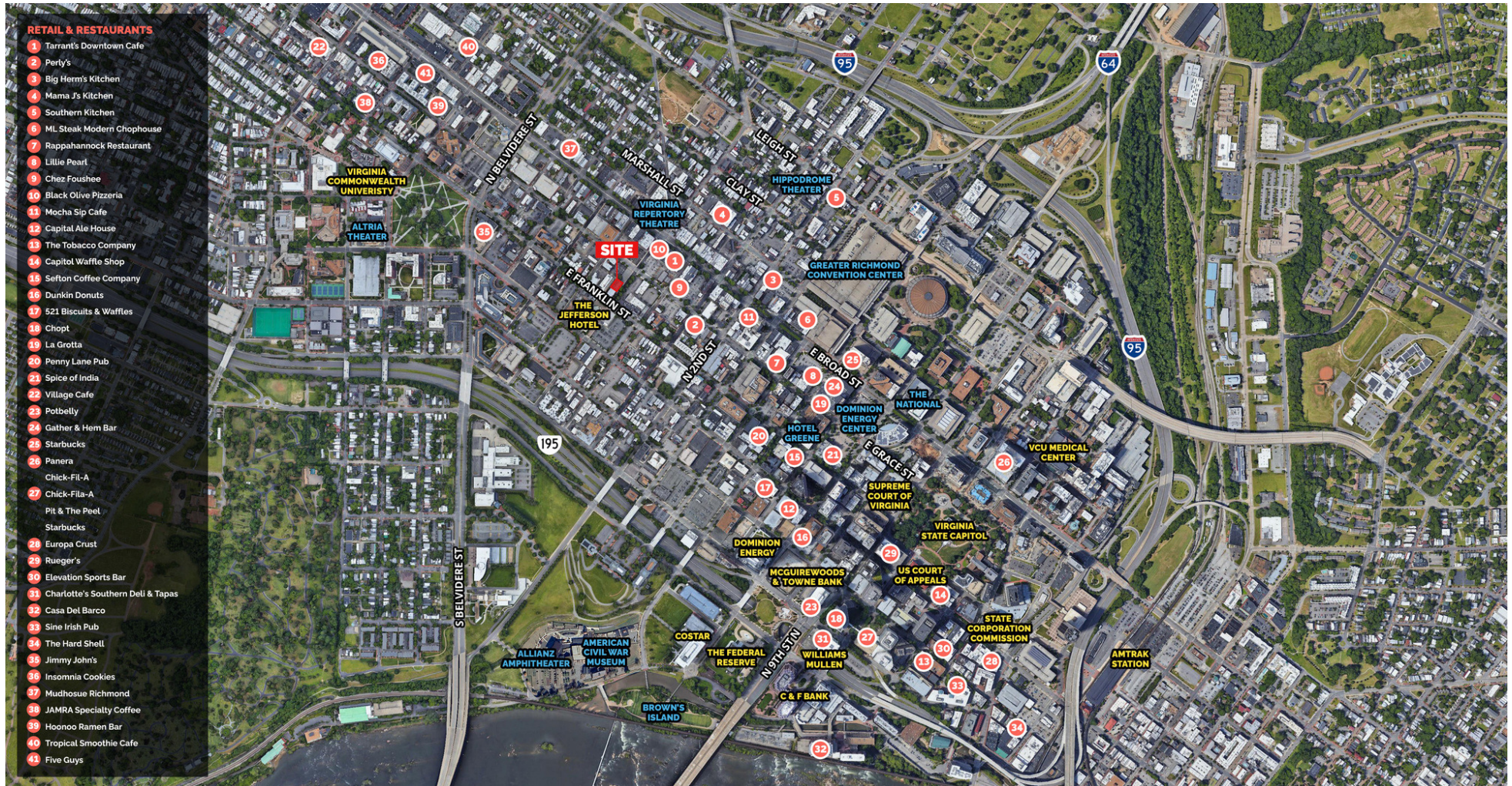
PARKING AERIAL // 5

CHRIS MESSERSMITH
804.616.3434
CHRIS.MESSERSMITH@DIVARIS.COM

CHESTERMAN PLACE

100 WEST FRANKLIN STREET, RICHMOND, VA 23220

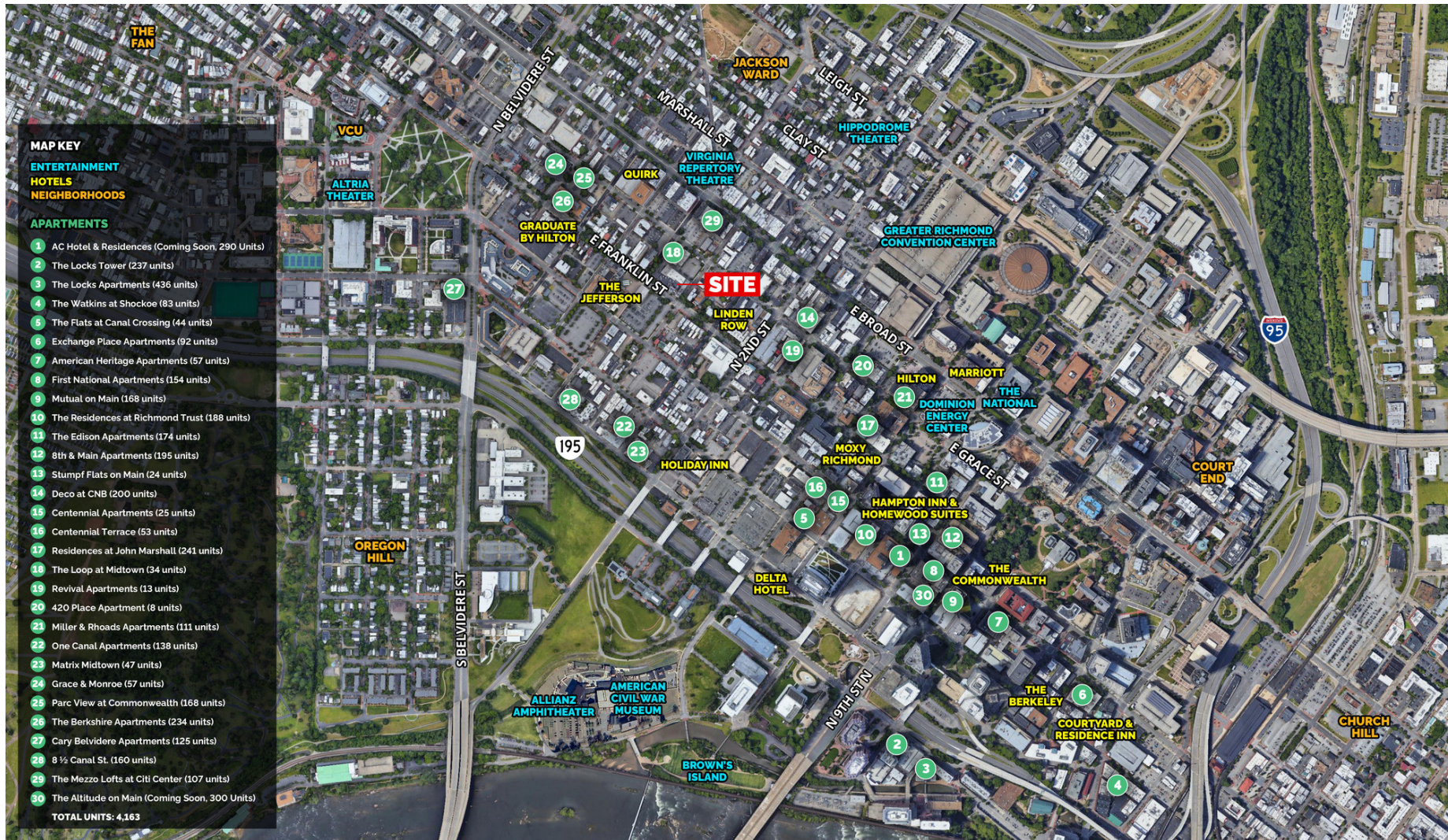
MARKET AERIAL



CHESTERMAN PLACE

100 WEST FRANKLIN STREET, RICHMOND, VA 23220

ADDITIONAL PHOTOS





Chris Messersmith
Senior Associate
804.616.3434
Chris.Messersmith@Divaris.Com

