

radius.

Powered by

SENECA FLEX

LEEDS.

YOUR WORKSPACE REIMAGINED

# INTRODUCTION

We are delighted to introduce you to

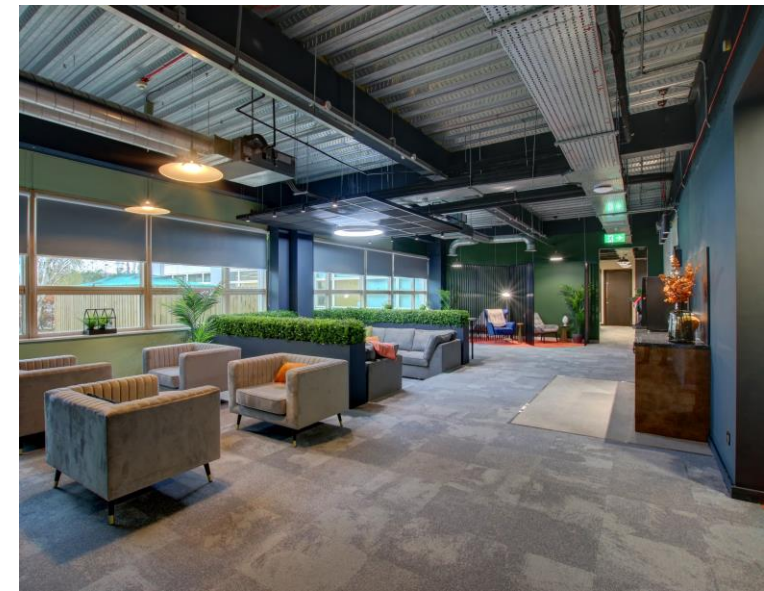
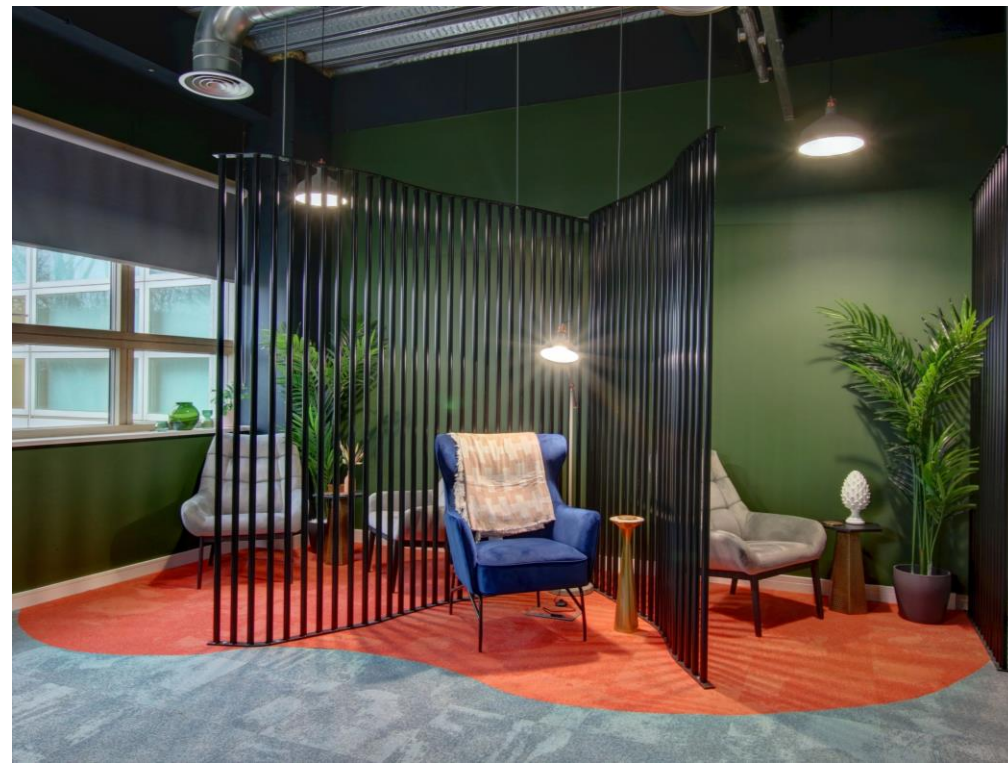
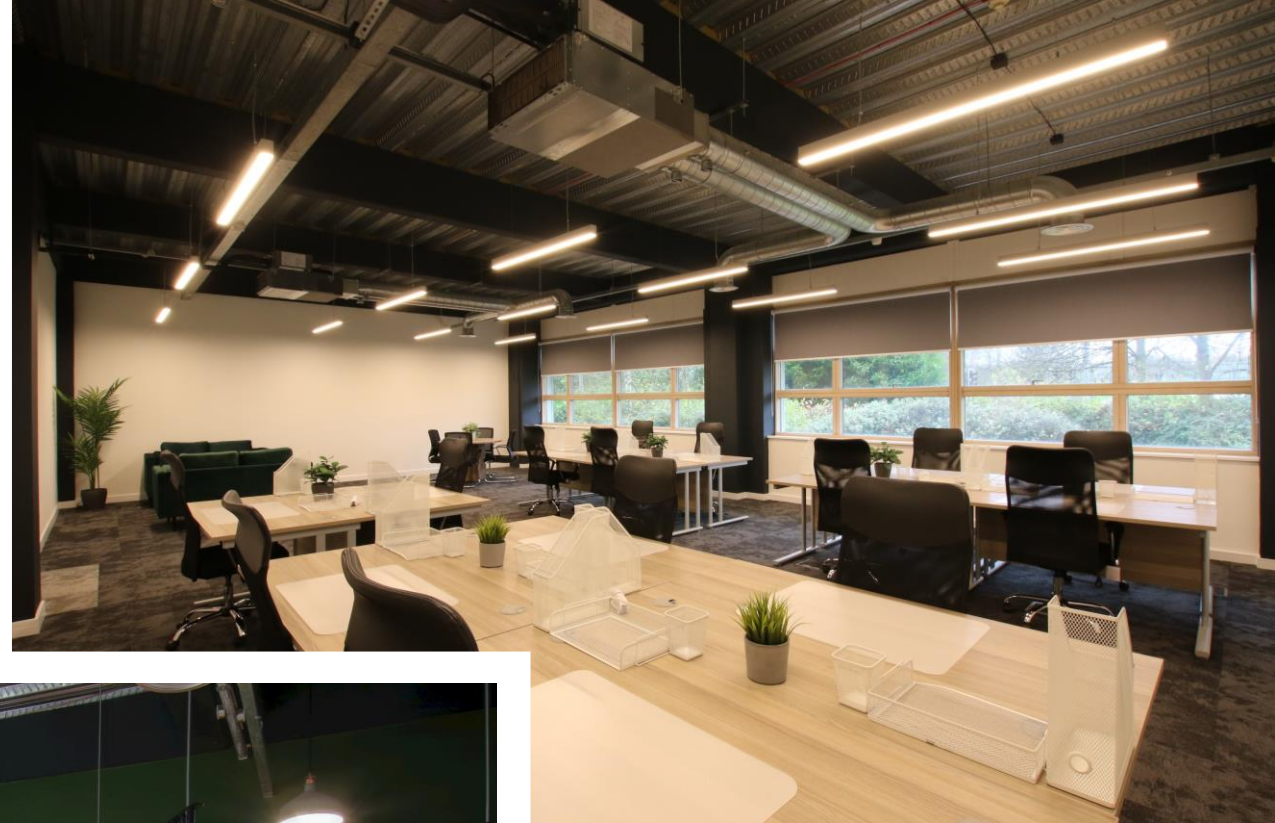
**Radius, Leeds.**

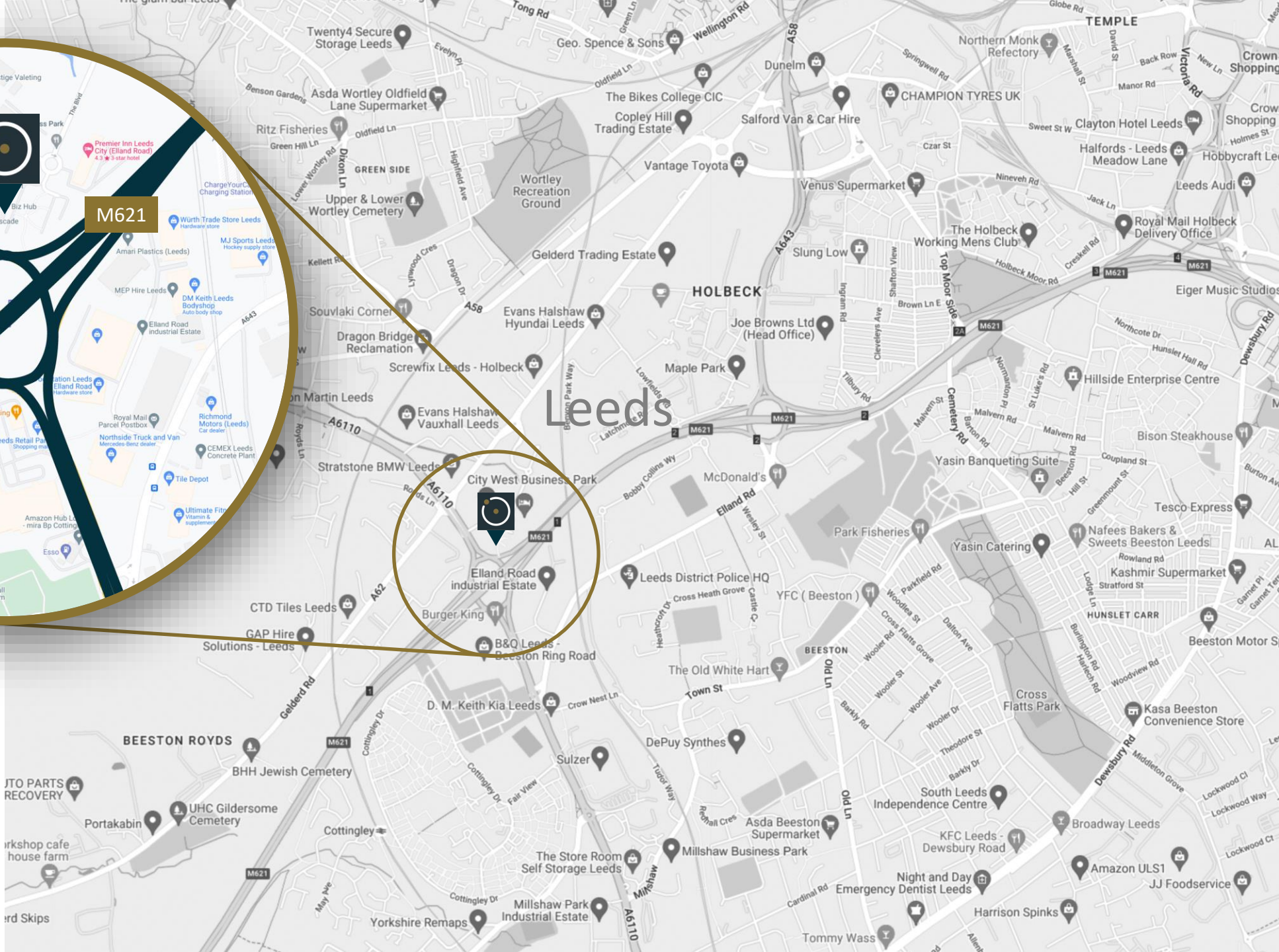
This brochure will provide the information you need to see why our centre is a great choice for your business.



Radius  
One City West  
Gelderd Road  
Leeds  
LS12 6NJ







**Location Matters:**  
So does your business

# Creating possibilities

Facilities that go the extra mile

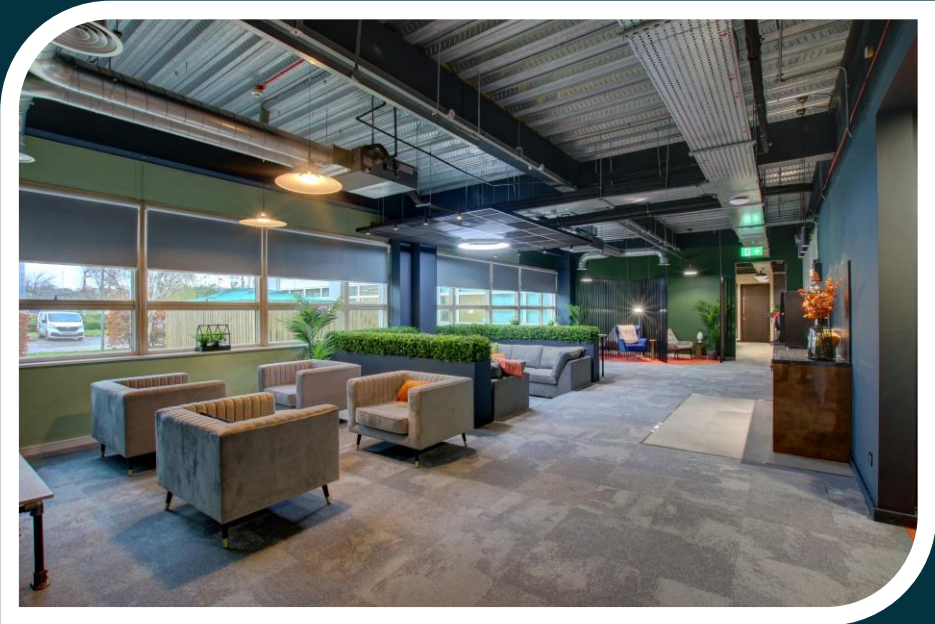
- Unrivalled transport connectivity
- Brand new energy efficient climate control system throughout
- 1,000 square foot executive business lounge
- Electrical vehicle charging points
- On-site parking spaces & secure cycle storage
- Fully DDA compliant throughout
- Contemporary offices featuring dramatic exposed ceilings and imposing 2.4m high entrance doors
- Stylish formal and informal meeting spaces, remodelled bathrooms and stunning new kitchens



# Unlocking potential

Extending your circle

Whether it's networking or finding some quiet space away from the office, our **1,000 square foot premium business lounge** is the perfect place to do business



Our wide variety of offices provide the ideal home to businesses from start-ups to multinationals

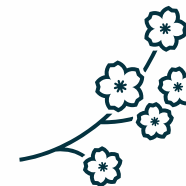
# Investing in our future

Reducing our carbon footprint

- 🕒 New energy efficient a/c System
- 🕒 Remove building gas consumption to zero
- 🕒 Planting of new trees
- 🕒 Breakout areas with wellbeing benefits



Silver Birch



Wildflower Meadow  
Mix



Water bound  
gravel



Picnic seating



# Our Team



Radius is **owned and managed by** Seneca Flex.

By managing our properties ourself we don't rely on expensive intermediary managing agents and instead utilise our dedicated team of property professionals to provide a first-class service to tenants.

We are a highly responsive and cooperative business partner.

PERSONAL – ACCESSIBLE – RESPONSIVE

**radius.**

