

RETAIL / RESTAURANT

FOR LEASE

# 700 - 720 E Broadway

Long Beach, CA 90802





# Retail/ Restaurant Opportunity

## 700 - 720 E BROADWAY

700-720 E Broadway offers a unique leasing opportunity in the heart of Downtown Long Beach, with two adjacent spaces available directly from the landlord. 700 E Broadway is a raw 3,000-6,000 SF space ready for a custom build-out, while 720 E Broadway is a fully built-out former cidery featuring a tasting room and production facility with existing equipment available for use. Together, these flexible spaces present an ideal setup for a restaurant, brewery, distillery, or other creative food and beverage concept looking to establish a presence in one of Long Beach's most dynamic and fast-growing corridors.

### Neighboring Tenants:

Roscoe's House Chicken 'N Waffles, Heritage, Ammatoli, Chez Bacchus, Ellie's, Alder and Sage, Little Coyote

Situated along the vibrant Broadway corridor, this property sits at the intersection of Long Beach’s thriving residential and commercial districts. Just minutes from the waterfront, Pine Avenue, and the East Village Arts District, tenants benefit from steady foot traffic, a strong local community, and proximity to hotels, offices, and new multifamily developments. The area’s growing food and beverage scene makes this an ideal location for a concept looking to tap into Long Beach’s energetic coastal culture.



OFFERING SUMMARY

SUITE 700 3,000 SF

ASKING \$33.00 /SF/YR NNN

SUITE 720 3,000 SF

ASKING \$36.00 /SF/YR NNN

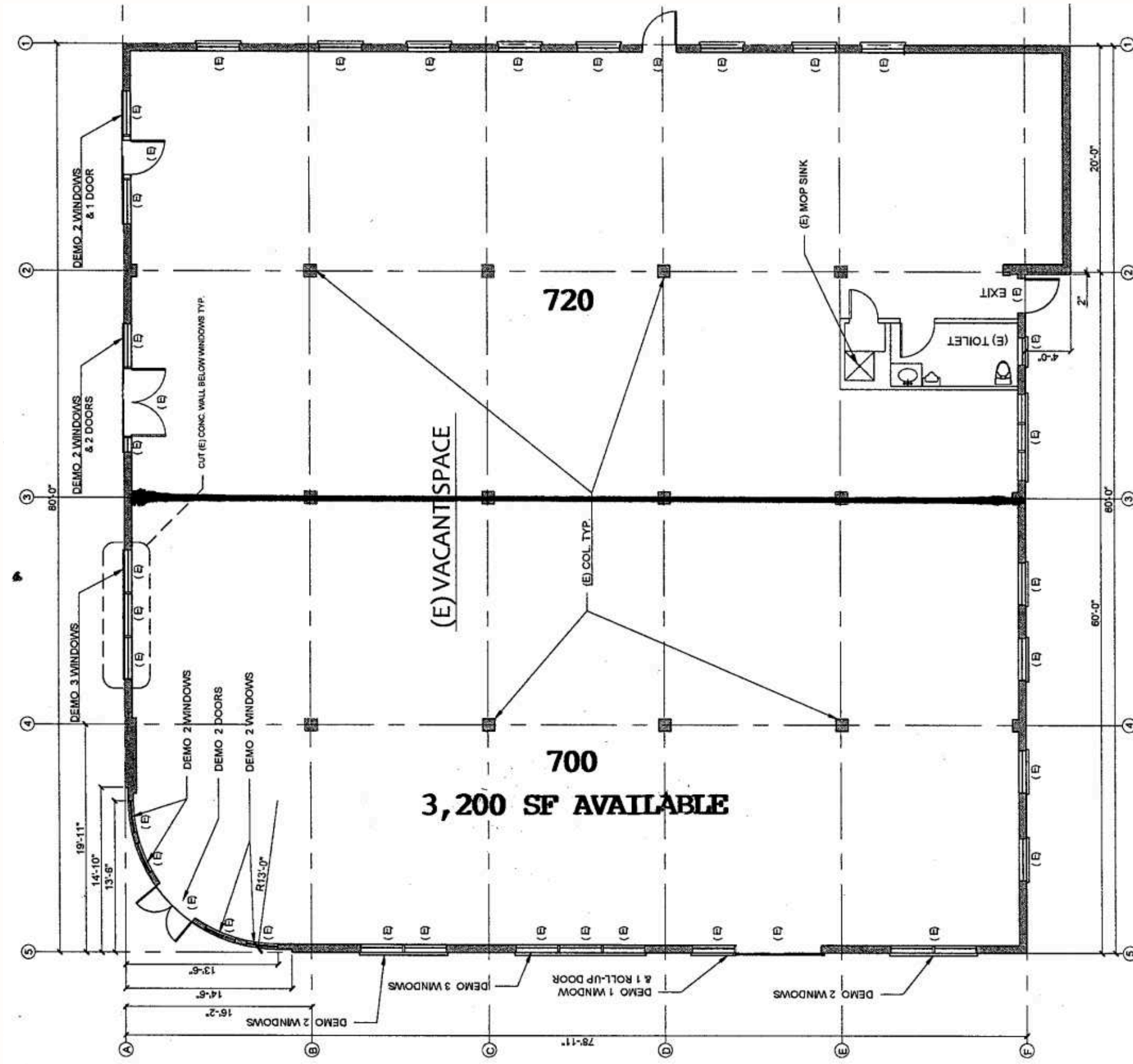








# Floor Plan



# Neighbors

AMMATOLI

Heritage

**zuzu's  
petals**

CHEZ  BACCHUS



*Ellie's*  
LONG BEACH

Little  Coyote



**KING'S FISH HOUSE**





**TYLER DEL RE**

Senior Vice President

323.979.7535

Ty@urbanlimere.com

BRE #: 01947880