

FOR LEASE

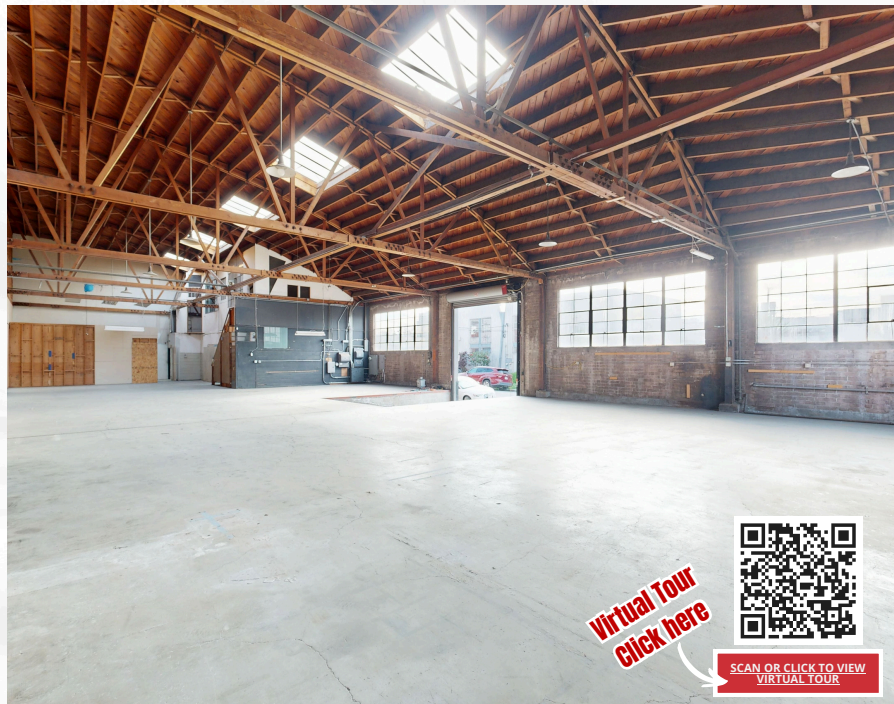
Highly Functional Warehouse Space



1035 Murray Street
Berkeley CA 94710

±6,370 SF
\$1.55/sf/month
Industrial Gross

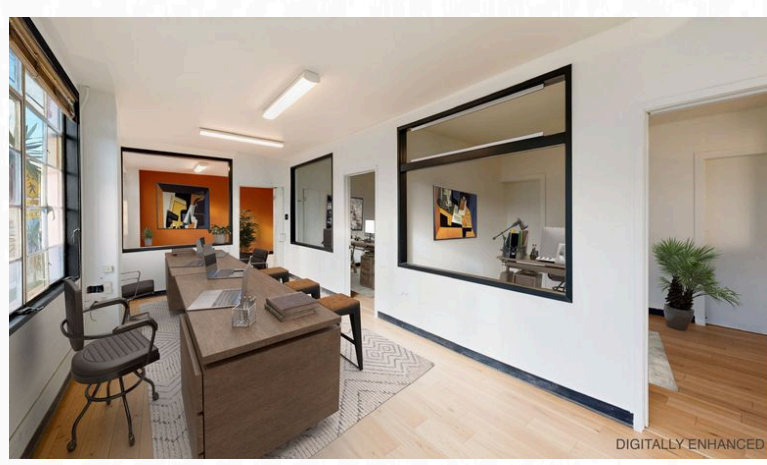
- Prime industrial space for lease in the heart of Berkeley.
- Ideal for manufacturing, warehousing, or light industrial use.
- Right off of Ashby Ave with convenient access to both I-80 and I-580 highways.



Virtual Tour
Click here

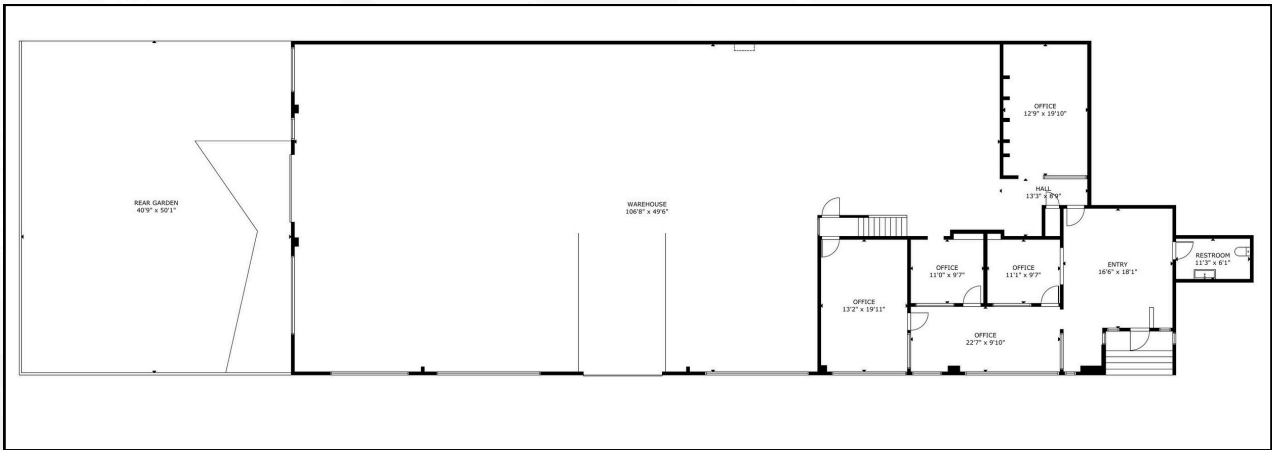
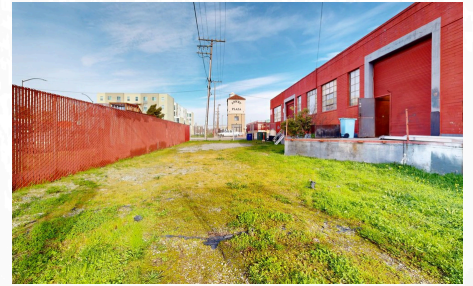
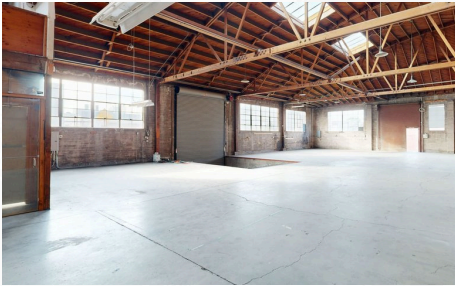


SCAN OR CLICK TO VIEW
VIRTUAL TOUR

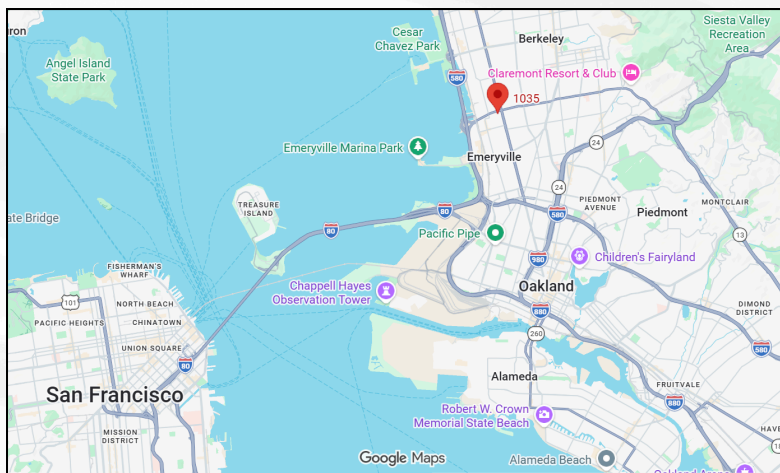


Property Features

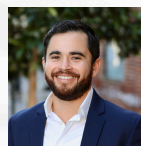
- ±1,100 SF of front office/reception area
- Excellent natural light
- Mostly openwarehouse with high ceilings
- Two (2) roll-up doors (one grade-level and one dock-high)
- Shared loading / parking area
- ±800 SF of bonus mezzanine/storage area
- MULI zoning
- 400 amp, 3-phase power



PROPERTY LOCATION



CONTACT US NOW



Colby Katz

(510)450-1420

ckatz@mrecommercial.com

LIC# 01949015



Francis Griffin

(510)450-1405

fgriffin@mrecommercial.com

LIC# 02016713

www.mrecommercial.com