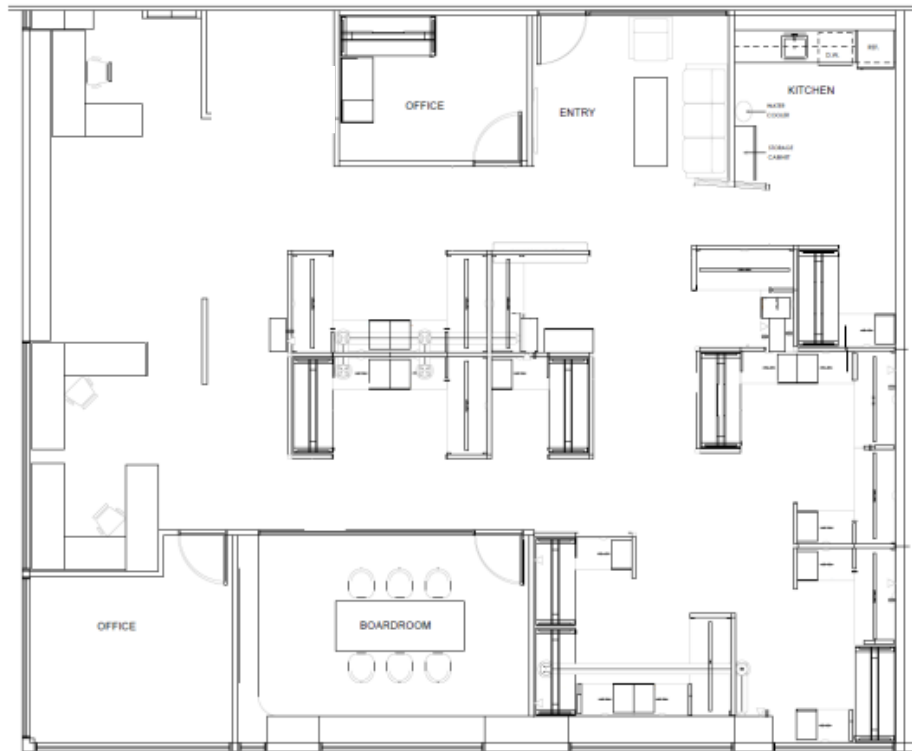
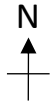


# 2323 Quebec Street, Vancouver, BC



## Suite 228 2,879 square feet

Description: Light industrial with ancillary office use (ancillary areas not to exceed 1/3 of space). Southwest corner unit currently improved with one office, boardroom, kitchen, storage/server room and open space.

This is a representation for marketing purposes only and should not be used for measurements of any kind. This drawing is not to scale.

**TPMG CAPITAL**

Real Estate Acquisition  
Management  
Leasing