



**CIVIC
CAMPUS**
HAMMERSMITH W6

Live Work **Play** Dine

Hammersmith's beautiful Civic Campus. A new destination for locals and visitors alike. Designed by RSHP, one of the world's most renowned architects, The Civic Campus will comprise of 205 new homes, cinema, retail, rooftop restaurant and over 65,000 sq ft of new office space.

Ravenscourt Park

Westfield Shopping Centre

Brook Green

Ravenscourt Park tube station

Kensington Olympia

Notting Hill

Holland Park

Furnivall Gardens

Knightsbridge

Hyde Park

The West End

The City

The Shard

Hammersmith Bridge

Earl's Court

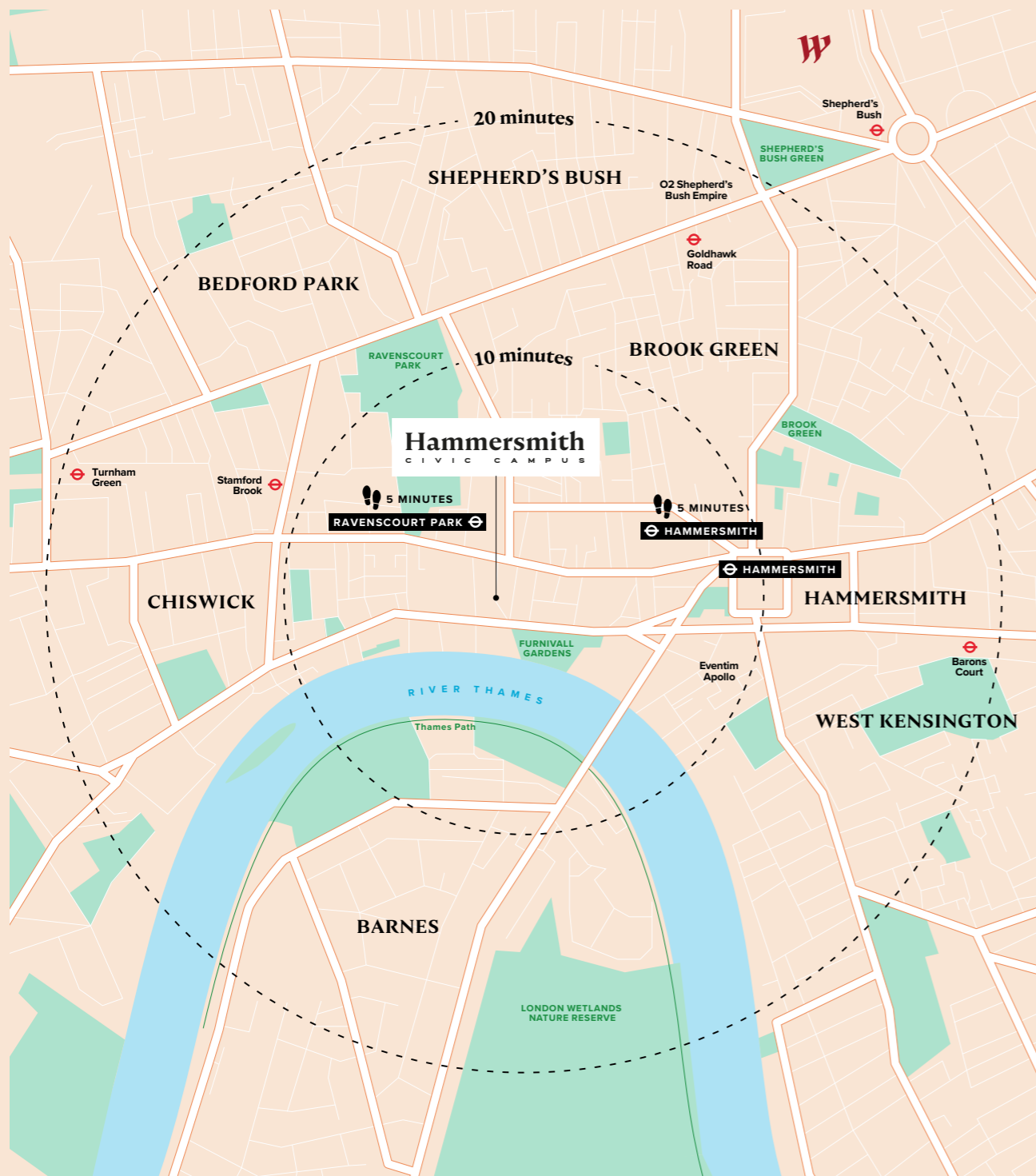
Chelsea

Barnes South



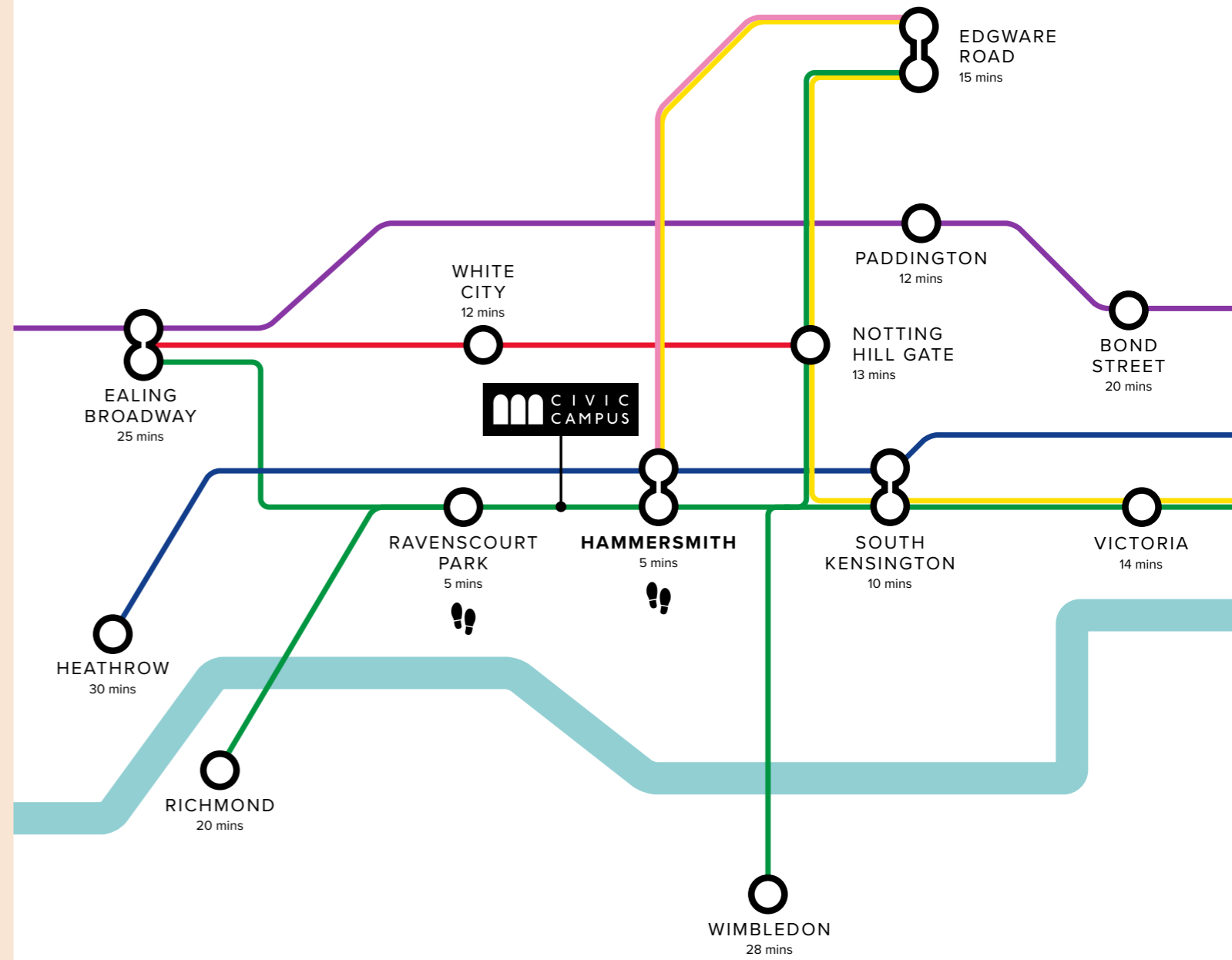
Location

Just a few minutes' walk from Hammersmith's beautiful parks offering sanctuaries for nature and exercise, charming riverside pubs, and world-class restaurants, The Civic Campus is at the heart of a district that is a fast growing, global tech and media destination.



Connectivity

JOURNEY TIMES FROM HAMMERSMITH



Hammersmith

The London Borough of Hammersmith & Fulham offers London's best mix of world-class culture, creativity and community arts reflecting an enviable and diverse heritage: leading edge theatre and performing arts at the Lyric, Bush Theatre and Riverside Studios; live music at the Eventim Apollo, O2 Shephard's Bush Empire, Bush Hall and a plethora of smaller venues; three major football clubs; thousands of years of riverside history and fascinating heritage at Fulham Palace.



Where innovation meets ambition – An industrial strategy for Hammersmith

2018 saw the creation of a groundbreaking partnership between Imperial College and Hammersmith & Fulham Council, the first between a local authority and a University.

The focus of this partnership has been based around boosting enterprise, innovation, skills and infrastructure locally, with £5bn of private investment already secured, which represents 75% of the total secured across the whole of West London.

The last 5 years has seen a significant acceleration in growth, resulting in the emergence of a world-leading community, set on a visionary pathway for Hammersmith to become the new silicon valley. The strategy is to drive economic growth and sector leading innovation, by attracting deep-tech organisations so that the business community in Hammersmith can become internationally competitive as well as lead the way in sustainability.

The re-purposing of the BBC Centre has become the White City Innovation District and is home to major organisations such as Airbus, BBC, ITV, Royal College of Art, Novartis and Imperial College, and with the new development of Hammersmith Civic Campus the area will be sure to attract many more big names to accompany the ones who are already successfully operating here.

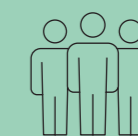
The vision has always been for Hammersmith to be an international business hub, and one of the main drivers for that vision has seen Hammersmith & Fulham Council become founder members of the IASP Innovation District Alliance, set up in Barcelona to pioneer business partnerships. It is an international network of inclusive, innovative districts that integrates communities and environment across the globe.



**£5 billion
private investment**



**75% of total investment for
the whole of West London**



**Development of a 5,000
strong community**



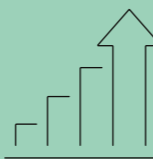
**Supporting and promoting 100
business events and summits**



**160 UKRI funded
projects worth £34m**



**Founder member of the IASP
Innovative Districts Alliance**



**Creating 8,000 high-value
new jobs to date**



**Overall jobs up by
2,200 to 144,000**



**Investing in new and upgraded,
community infrastructure**

In Great Company

Hammersmith has attracted global anchor organisations, like Novartis, Airbus, ITV and the Royal College of Art who sit alongside biotech pioneers like Synthace & Autolus.

Businesses in the borough have raised more than £5bn in investment – more than the other six West London boroughs combined.



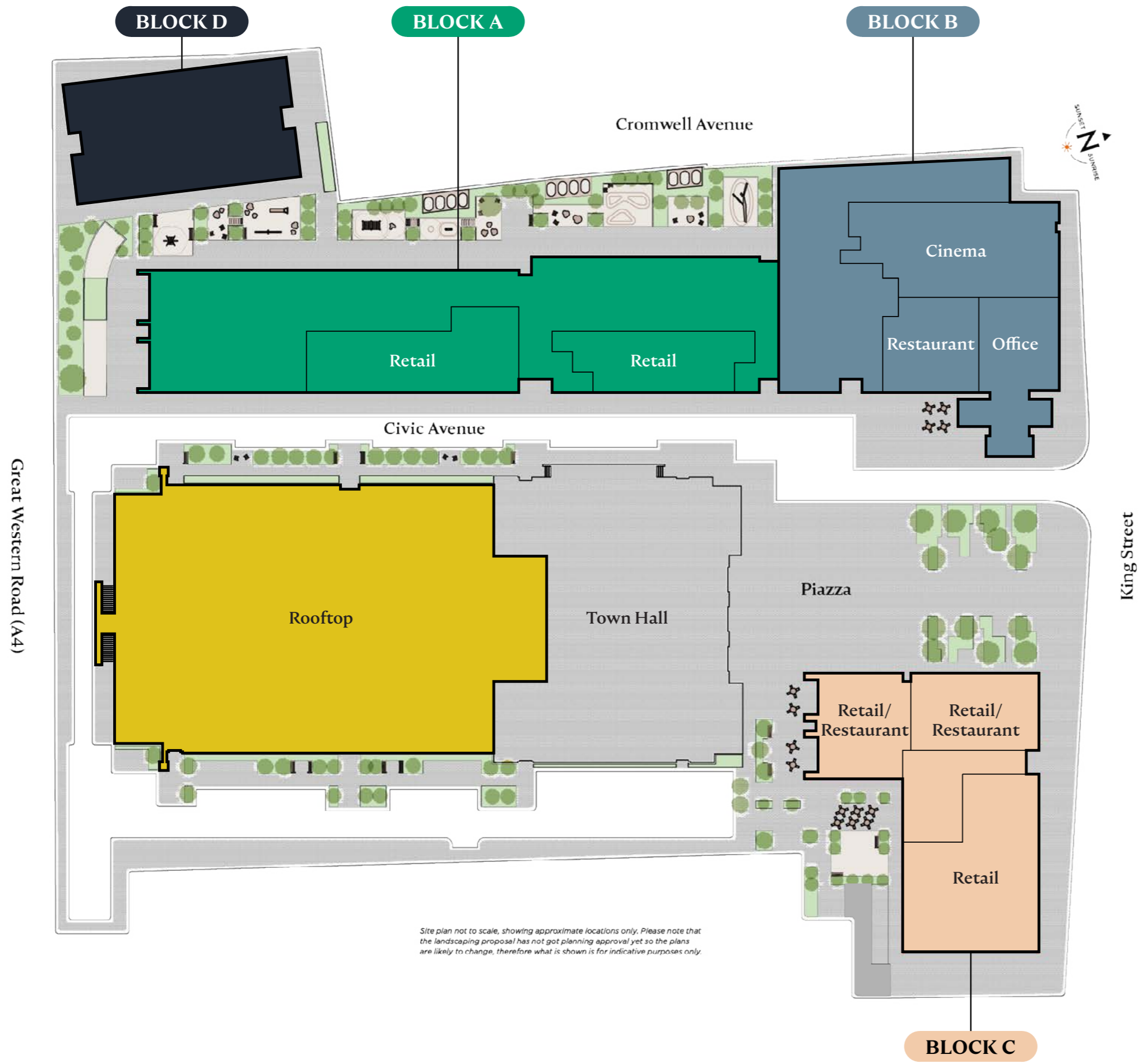


The Campus

OVER
65,000 SQ FT
BRAND NEW OFFICE SPACE

205
NEWS HOMES





Site plan not to scale, showing approximate locations only. Please note that the landscaping proposal has not got planning approval yet so the plans are likely to change, therefore what is shown is for indicative purposes only.

Designed by award winning architects RSHP. The Hammersmith Civic Campus breathes new life into this historic location, based around an ethos of beauty, inclusivity and environmentalism, the scheme sets new benchmarks for 'Zero Harm' accessibility and new technological & sustainability features.

Featuring over 65,000 sq ft of innovative and flexible office space, it will act as a civic and cultural anchor, not only vastly improving the local public realm, but also playing a major role in delivering the Council's ambitious 'Cultural Strategy' for the borough, as a leading arts and cultural centre, with Hammersmith at its heart as a vibrant day and night time destination.

Panoramic rooftop restaurant and gardens with river views, and new landscaped public gardens and piazzas sit alongside a five-screen cinema, performance venues, gallery space, dining, shops and offices, transforming the Grade II listed building into an iconic public and business facility.

The Civic Campus will ensure the continued growth of the borough's economy, alongside a commitment to put in place a lifetime approach to skills development to ensure opportunities for all based around economic growth and a renewed focus on affordable space for business, ensuring the benefits are for everyone – not just a favoured few.

The Piazza

'Unity Square', the expansive public outdoor piazza designed by world-renowned landscape architects Gillespies, promises to bring Civic Campus to life with its inclusive seating, staging area for performances and events, café seating areas and welcoming spaces for community daily enjoyment. Unity Square also provides improved pedestrian links to Furnivall Gardens and the Thames riverfront.

Whether it's Wimbledon in summer, music and comedy festivals or a weekly produce market, a curated programme of events ensures this beautiful outdoor square will be the beating heart for residents and visitors alike.



Retail and leisure

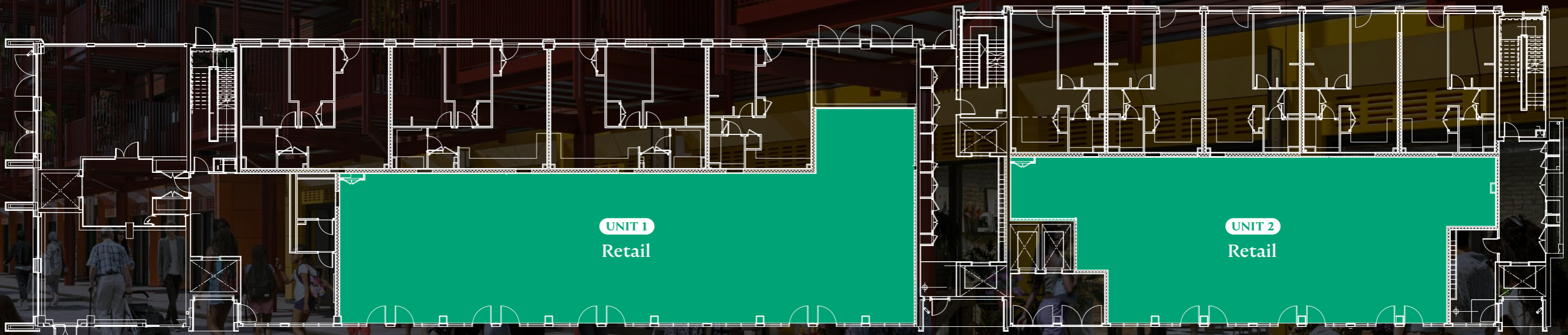


Block A

Accommodation

| UNIT | USE | SQ FT |
|------|--------|-------------|
| 1 | Retail | 4,047 sq ft |
| 2 | Retail | 2,950 sq ft |

Cromwell Avenue

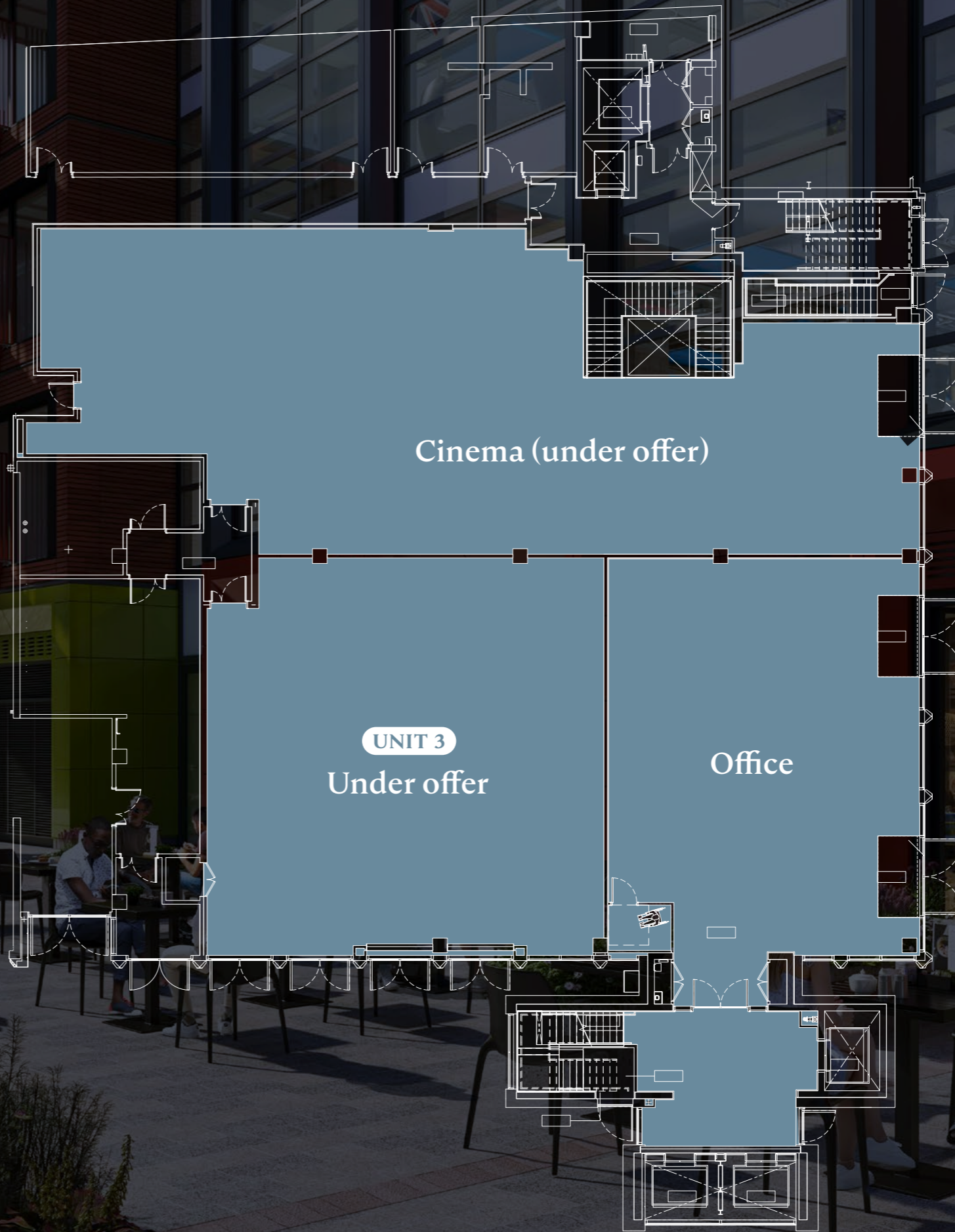




Block B

Accommodation

| UNIT | USE | SQ FT |
|------|------------|-------------|
| 3 | Restaurant | 2,627 sq ft |



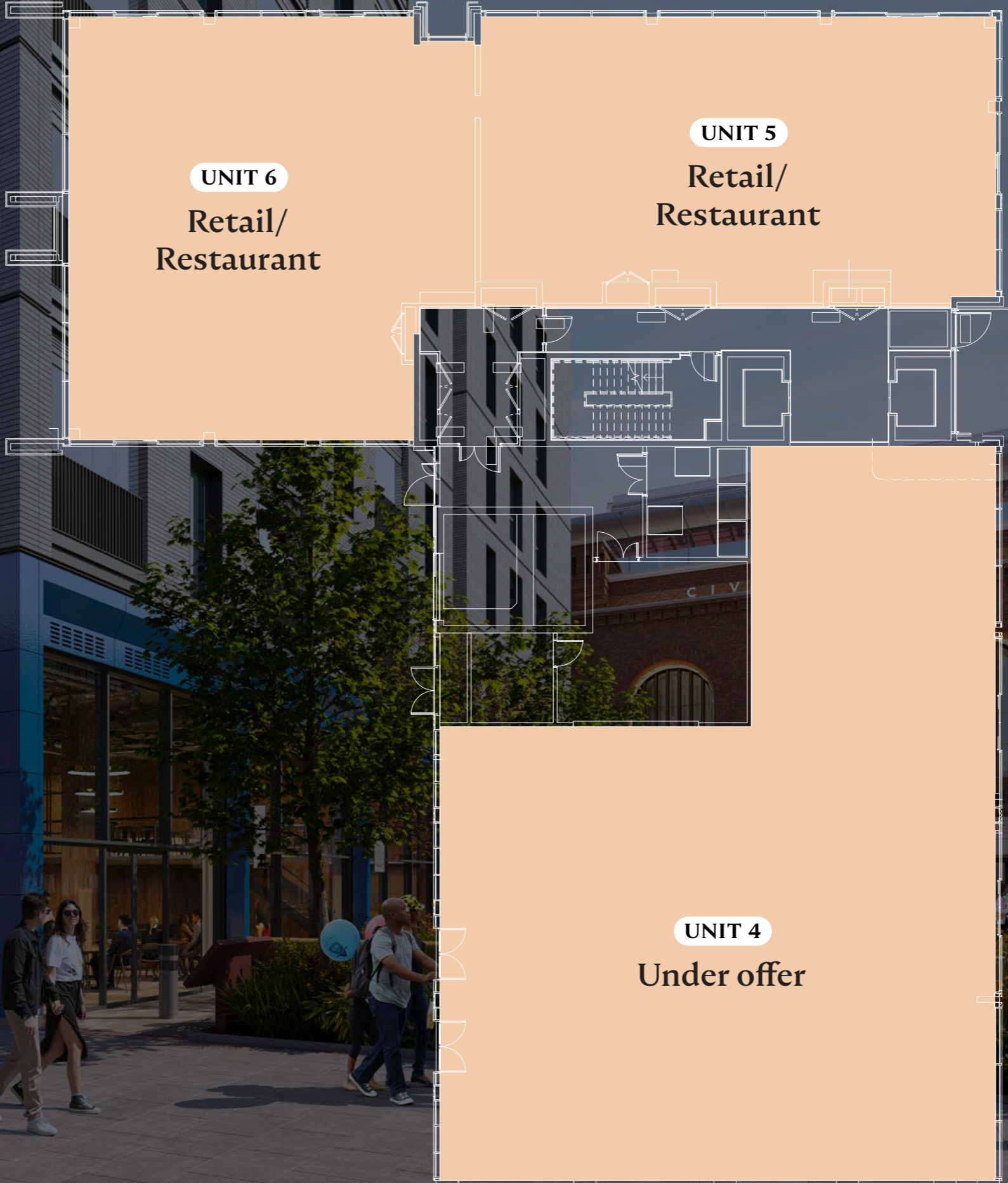
King Street



COLOMBIA TOWN

Block C

| UNIT | USE | SQ FT |
|------|-------------------|-------------|
| 4 | Retail | 4,467 sq ft |
| 5 | Retail | 1,959 sq ft |
| 6 | Retail/Restaurant | 2,239 sq ft |



King Street





CIVIC CAMPUS

HAMMERSMITH & FULHAM

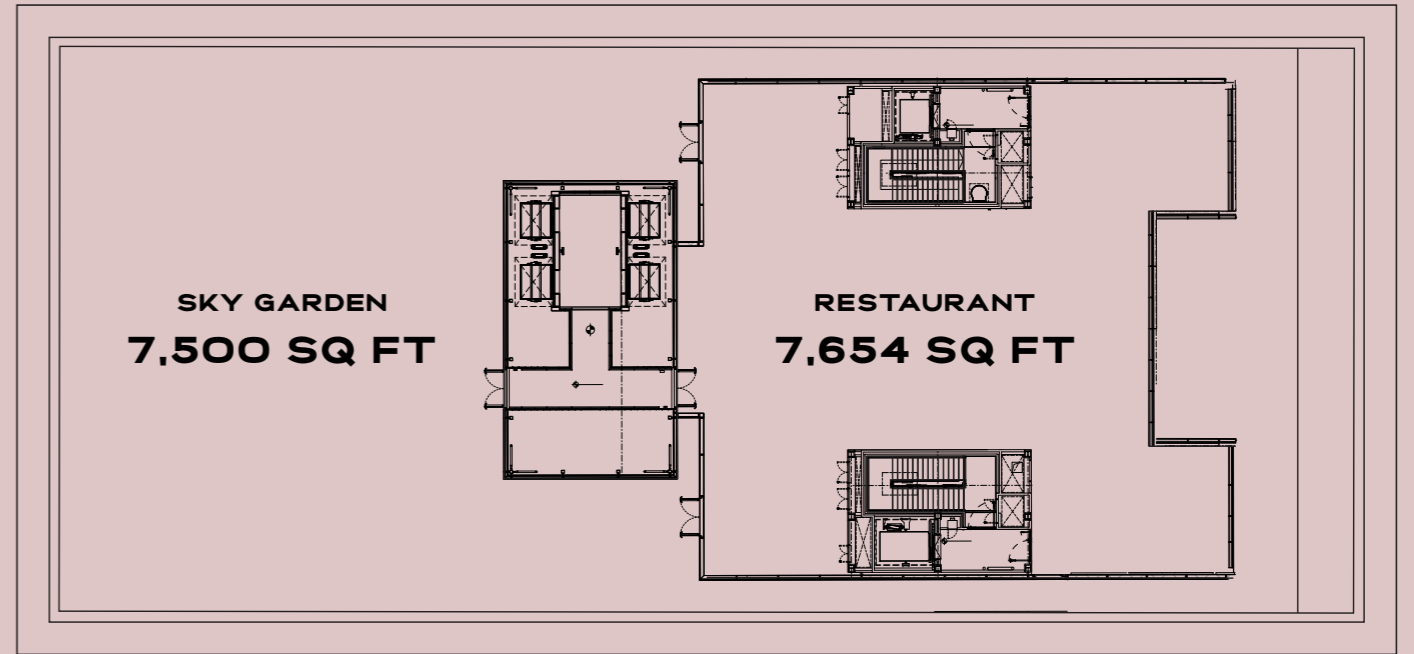
The rooftop





The rooftop

A rooftop restaurant and bar opportunity located on top of the Grade II listed former Town Hall. Designed by award winning architects RSHP with panoramic roof gardens and river views.



**SOUTH
FACING**

**THAMES RIVER
VIEWS**

**CITY SKYLINE
VIEW**



Contact



S A V I L L S

Sasha Pescod

sasha.pescod@savills.com

+44 (0) 7812 447 087

David Bannister

david.bannister@savills.com

+44 (0) 7974 756 759



C F C O M M E R C I A L

Craig Fisher

craig@cfcommercial.co.uk +44 (0)

7947 534 589

Catherine Johnson

catherine@cfcommercial.co.uk

+44 (0) 7386 740 192

IMPORTANT NOTICE

Savills, their clients and any joint agents give notice that:

1. They are not authorised to make or give any representations or warranties in relation to the property either here or elsewhere, either on their own behalf or on behalf of their client or otherwise. They assume no responsibility for any statement that may be made in these particulars. These particulars do not form part of any offer or contract and must not be relied upon as statements or representations of fact.
2. Any areas, measurements or distances are approximate. The text, images and plans are for guidance only and are not necessarily comprehensive. It should not be assumed that the property has all necessary planning, building regulation or other consents and Savills have not tested any services, equipment or facilities. Purchasers must satisfy themselves by inspection or otherwise.

Maps are reproduced from the Ordnance Survey Map with the permission of the Controller of H.M. Stationery Office. © Crown copyright licence number 100022432 Savills (UK) Ltd, and published for the purposes of identification only and although believed to be correct accuracy is not guaranteed.

Designed and produced by Savills Marketing: 020 7499 8644 | 17.10.2025