

METRO
 REALTY SERVICES LLC
 201 Moreland Rd, Suite 4, Hauppauge, NY 11788
 631-770-0700 metrorealtyservices.com

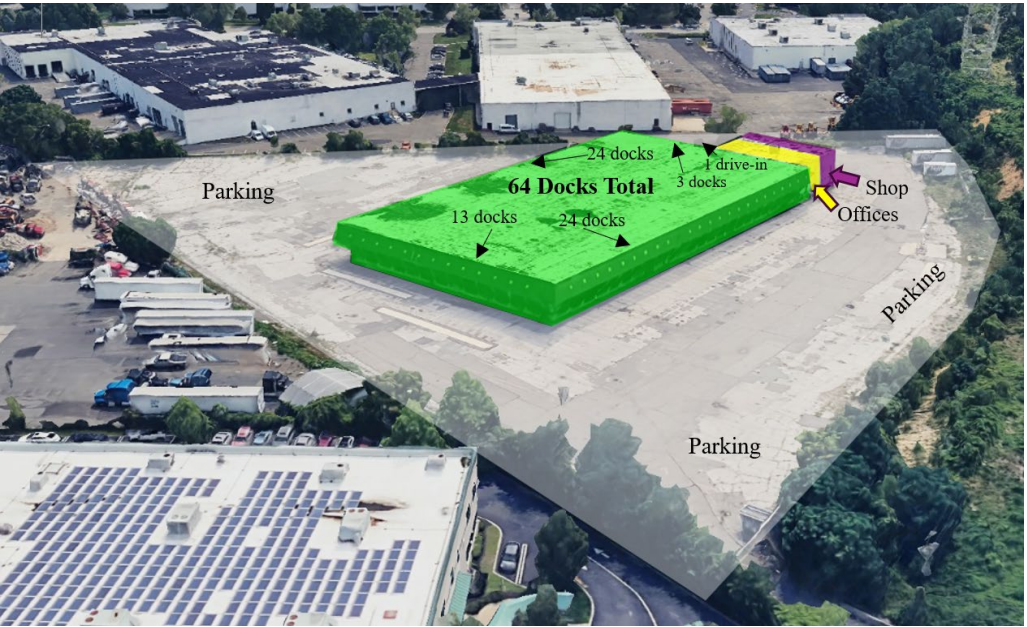
Divisions Available
 Call for details

Contact "Exclusive Agent":
 Mark Timpone, Managing Partner
 Licensed Real Estate Broker
 Direct: 516-375-8069 (Call or text)
 E-mail: mark@metrorealtyservices.com

All information submitted is subject to errors omissions, change of price or rental, change of other terms and conditions, prior sale, lease, financing or withdrawal without notice. All areas and dimensions are approximate. This Advertisement does not suggest that the broker has a listing on this property or properties or that any property is currently available.

1 Imperatore Drive, Old Bethpage

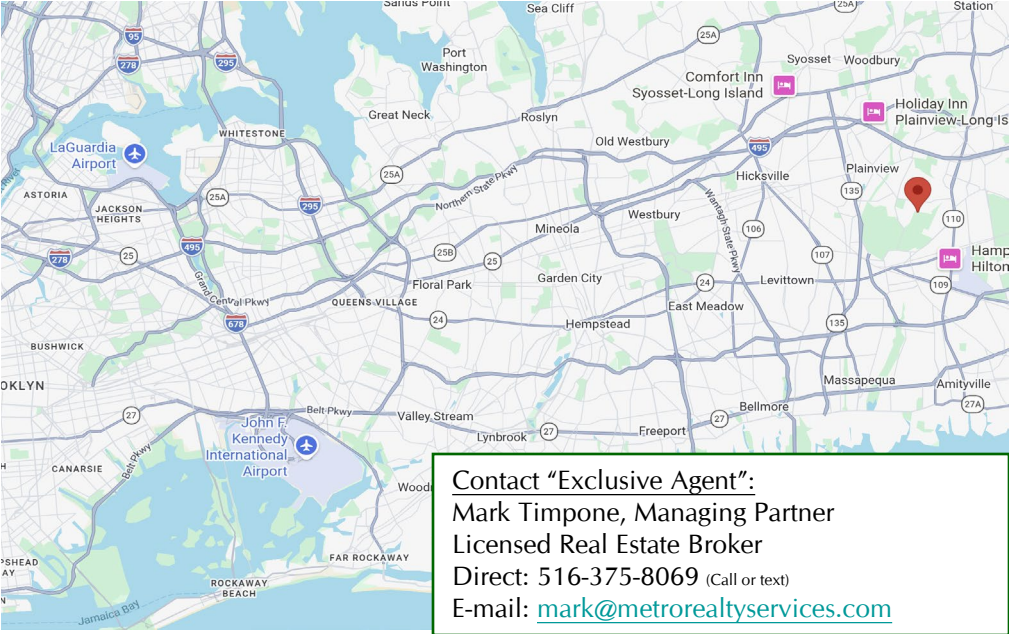
Cross-Dock for Sale or Lease



Location:	Long Island (Old Bethpage)
Doors:	64 (exterior)
Office:	5,500 sq. ft. +/-
Height:	16' +/-
Acres:	8.2
Building:	48,140 sq. ft. +/-
Dimensions:	Dock: 151' x 266' +/-
Taxes:	\$294,766.30 +/-

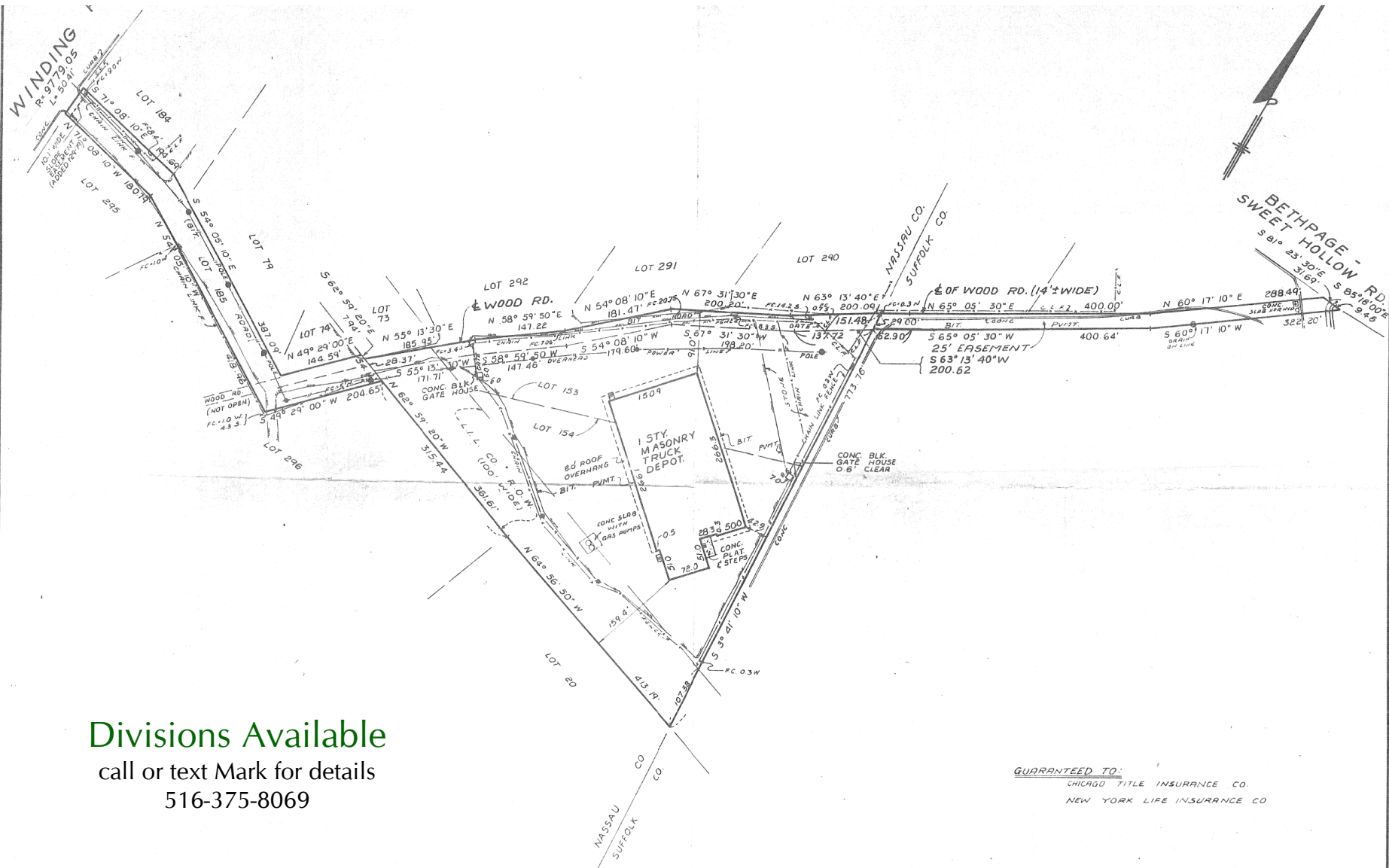
Notable Distances:

- 2.36 miles to The Long Island Expressway (commercial traffic)
- 1.5 miles to Route 110
- 2.15 miles to Route 135 (commercial traffic)
- 4.1 miles to the N Parkway
- 19 miles to the Cross Island Parkway
- 21 Miles to the Clearview Expressway



Contact "Exclusive Agent":
 Mark Timpone, Managing Partner
 Licensed Real Estate Broker
 Direct: 516-375-8069 (Call or text)
 E-mail: mark@metrorealtyservices.com

All information submitted is subject to errors omissions, change of price or rental, change of other terms and conditions, prior sale, lease, financing or withdrawal without notice. All areas and dimensions are approximate. This Advertisement does not suggest that the broker has a listing on this property or properties or that any property is currently available.



Divisions Available

call or text Mark for details
516-375-8069

GUARANTEED TO:
CHICAGO TITLE INSURANCE CO.
NEW YORK LIFE INSURANCE CO.

All information submitted is subject to errors omissions, change of price or rental, change of other terms and conditions, prior sale, lease, financing or withdrawal without notice. All areas and dimensions are approximate. This Advertisement does not suggest that the broker has a listing on this property or properties or that any property is currently available.

Contact "Exclusive Agent":
 Mark Timpone, Managing Partner
 Licensed Real Estate Broker
 Direct: 516-375-8069 (Call or text)
 E-mail: mark@metrorealtyservices.com

861460

861462