



## Sierra Quebec Bravo, London, E14 9SH

Positioned in a peaceful dockside, SQB enjoys a prime location next to the South Quay DLR station and is just a short walk from the Jubilee and Elizabeth lines. This connectivity places you within 20 minutes of the West End and under 15 minutes from The City.



24hr access



Air-con



Lounge area



Disabled access



Furnished



Kitchen



Lifts



Meeting rooms



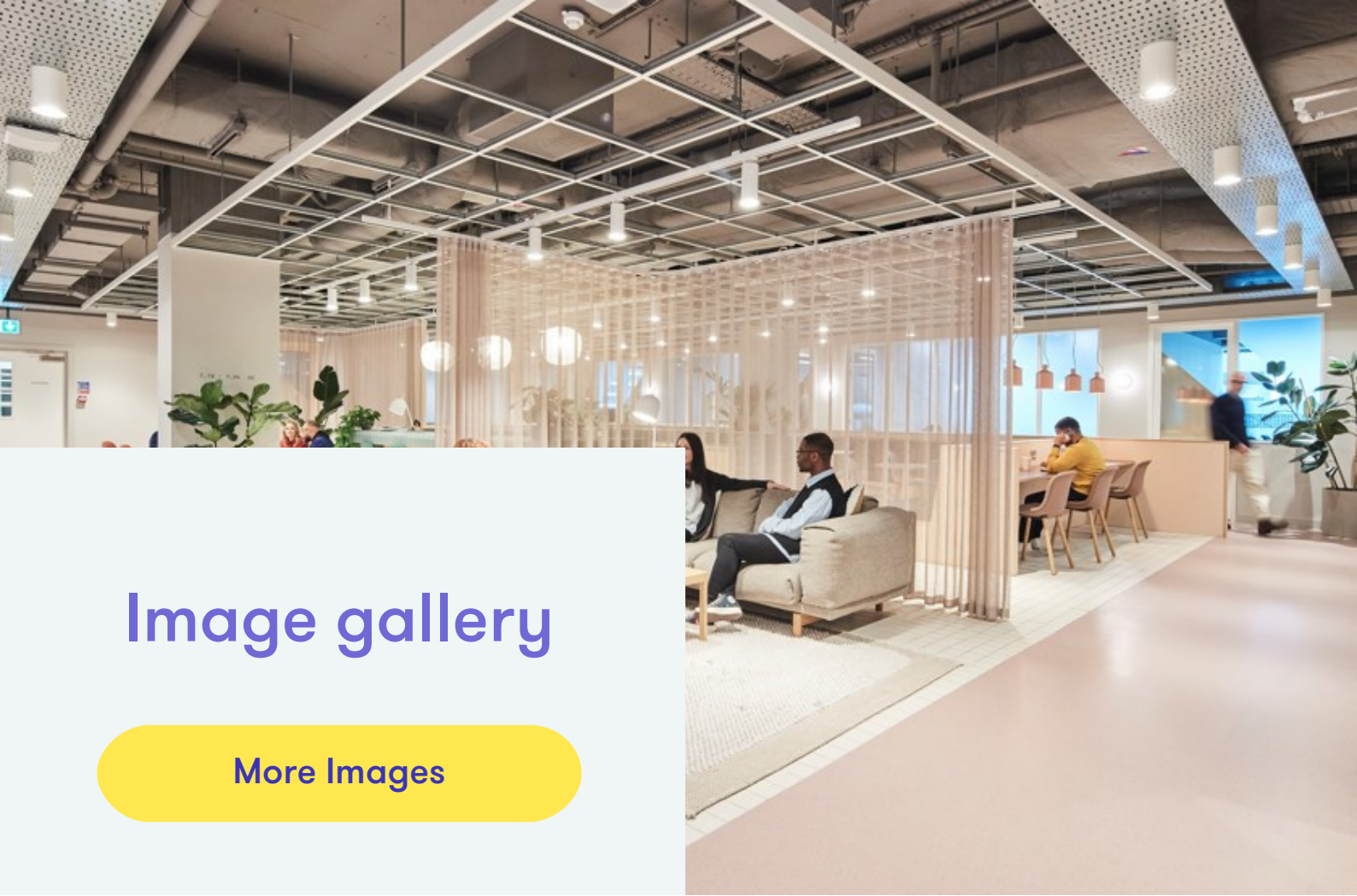
Phonebooth



Wi-fi

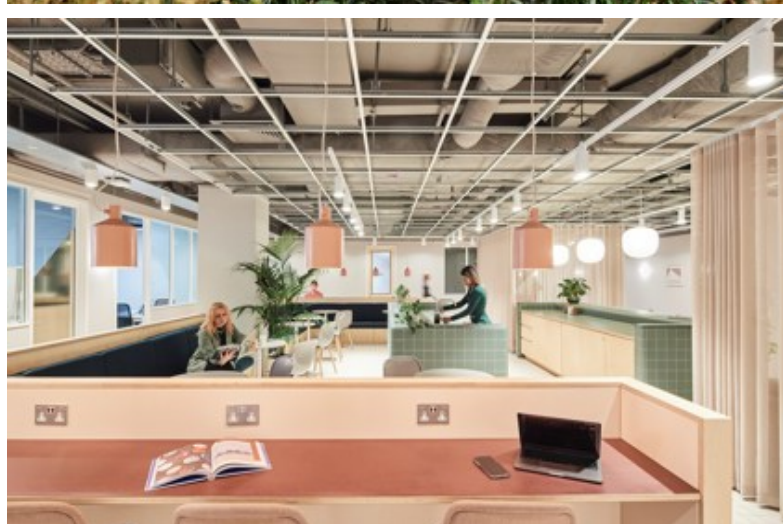
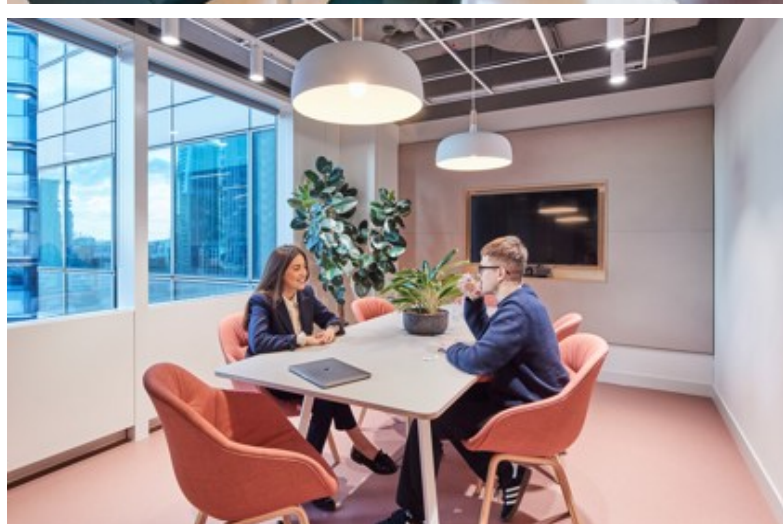


EPC Rating: C



# Image gallery

More Images





## Nearest transport

light\_rail\_station

South Quay  
0 minute walk

bus\_station

Admirals Way (Stop U)  
6 minute walk

light\_rail\_station

Crossharbour  
6 minute walk

subway\_station

Canary Wharf  
7 minute walk

## Why we love...

Sierra Quebec Bravo benefits from the most amazing natural daylight. With windows throughout, there is no bad seat to be had!



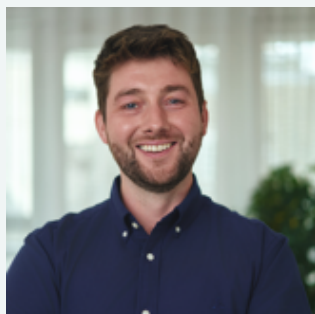
Dan  
Co-Head Workthere UK



Holly Pollock  
Senior Landlord Advisory

✉ holly.pollock@workthere.com

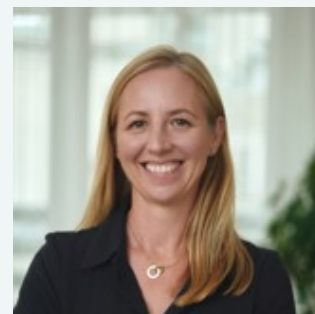
☎ 07946 609706



Tom Leahy  
Co-Head of Workthere UK

✉ tom.leahy@workthere.com

☎ 07955 147734



Kate Prior  
Senior Landlord Advisory

✉ kate.prior@workthere.com

☎ 07946 132523

# Floor Information

[Download floorplan](#)

	Monthly price	Max Desks	Size (sqft)	Price per sqft	Availability	Term
4th floor (south east)	£31,167.5	30	3,562	£105	January 2026	24+ months
4th floor (south west)	£34,353	50	3,926	£105	2-4 weeks	24+ months
5th floor (north)	£86,613.7	90	7,699	£135	December, 2025	24+ months
5th floor (south)	£67,366	90	7,699	£105	Now	24+ months
606	£17,237.5	28	1,970	£105	2-4 weeks	24+ months
607	£11,287.5	18	1,290	£105	2-4 weeks	24+ months
10th floor	£38,500	64	4,400	£105	Now	24+ months
1303	£14,131	20	1,615	£105	Now	24+ months
1306	£17,238	28	1,970	£105	Now	12+ months
12th floor - part south	£70,278.7	90	6,247	£135	Subject to fit out	24+ months