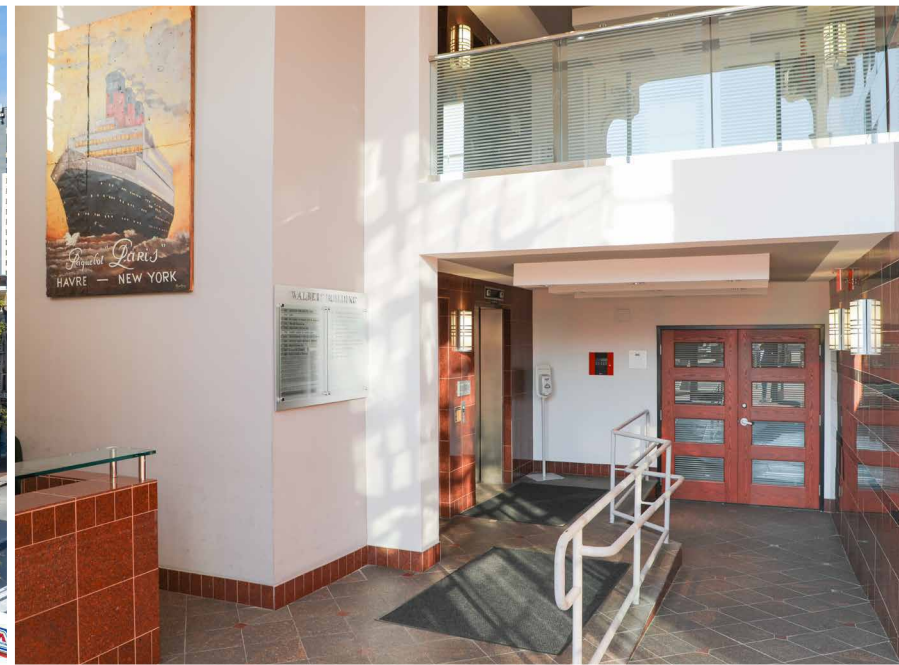


FOR LEASE

BALTIMORE COUNTY, MD

THE WALBERT BUILDING

1800 NORTH CHARLES STREET BALTIMORE, MD 21201



PROPERTY HIGHLIGHTS:

- ▶ 67,250 SF OF TOTAL OFFICE SPACE
- ▶ FREE SHARED CONFERENCE ROOM
- ▶ ON-SITE PARKING AVAILABLE
- ▶ FULL-TIME LOBBY ATTENDANT
- ▶ NEW OPERABLE WINDOWS
- ▶ SBA HUB ZONE
- ▶ 2 BLOCKS FROM PENN STATION

DAVID S. BROWN
ENTERPRISES, L.T.D.

BRENT MANGUM | VP, OFFICE LEASING
410.581.2518 | BRENT@DAVIDSBROWN.COM

NOAH ADLER | LEASING ASSOCIATE
410.581.2510 | NADLER@DAVIDSBROWN.COM

410.581.2520
WWW.DAVIDSBROWN.COM
100 PAINTERS MILL RD, OWINGS MILLS, MD

FOR LEASE

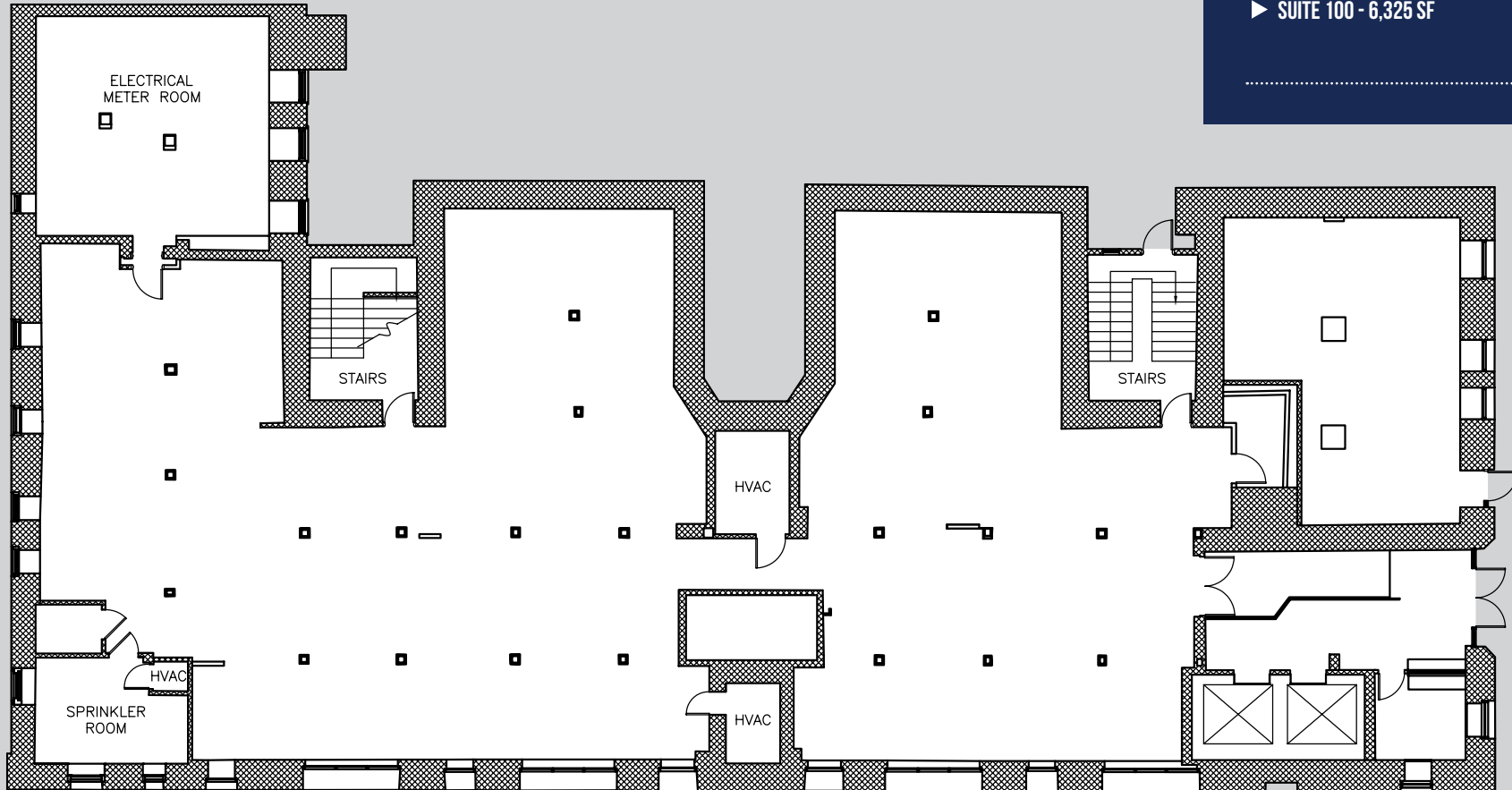
B BALTIMORE COUNTY, MD

THE WALBERT BUILDING

1800 NORTH CHARLES STREET BALTIMORE, MD 21201

AVAILABLE

▶ SUITE 100 - 6,325 SF

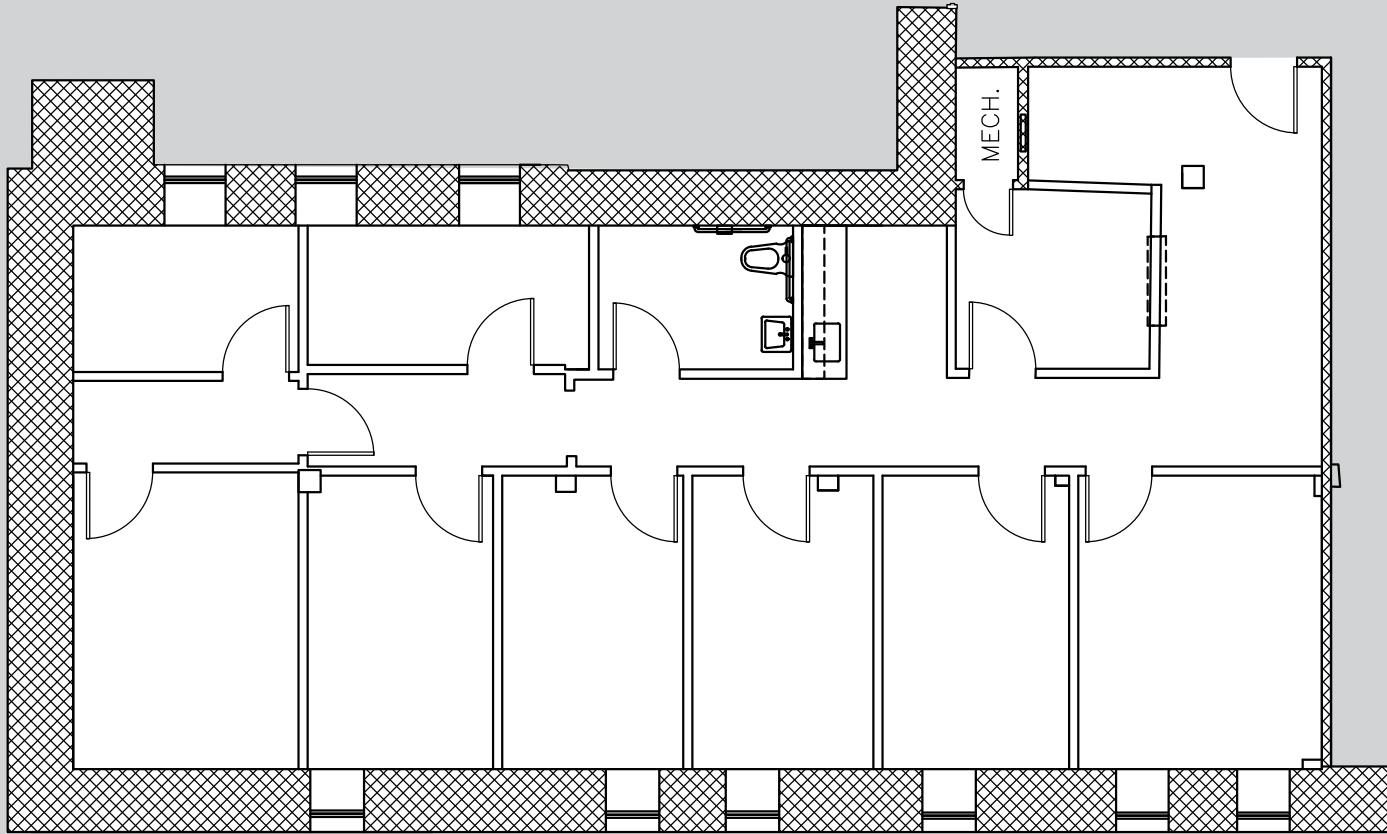


FOR LEASE

B BALTIMORE COUNTY, MD

THE WALBERT BUILDING

1800 NORTH CHARLES STREET BALTIMORE, MD 21201



AVAILABLE

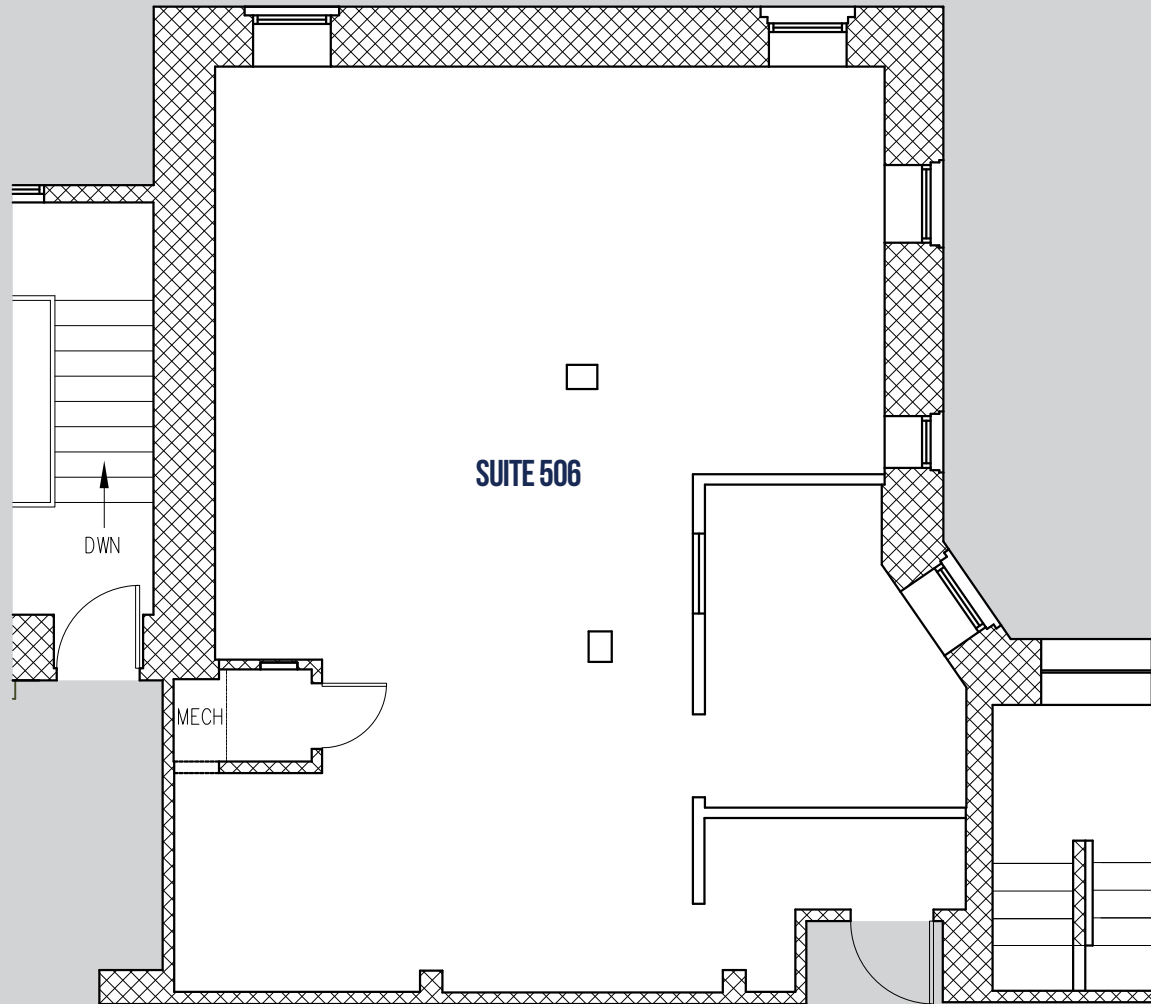
▶ SUITE 204 - 1,870 SF

FOR LEASE

B BALTIMORE COUNTY, MD

THE WALBERT BUILDING

1800 NORTH CHARLES STREET BALTIMORE, MD 21201



AVAILABLE

▶ SUITE 506 - 1,056 SF

DAVID S. BROWN
ENTERPRISES, L.T.D.

BRENT MANGUM | VP, OFFICE LEASING

410.581.2518 | BRENT@DAVIDSBROWN.COM

NOAH ADLER | LEASING ASSOCIATE

410.581.2510 | NADLER@DAVIDSBROWN.COM

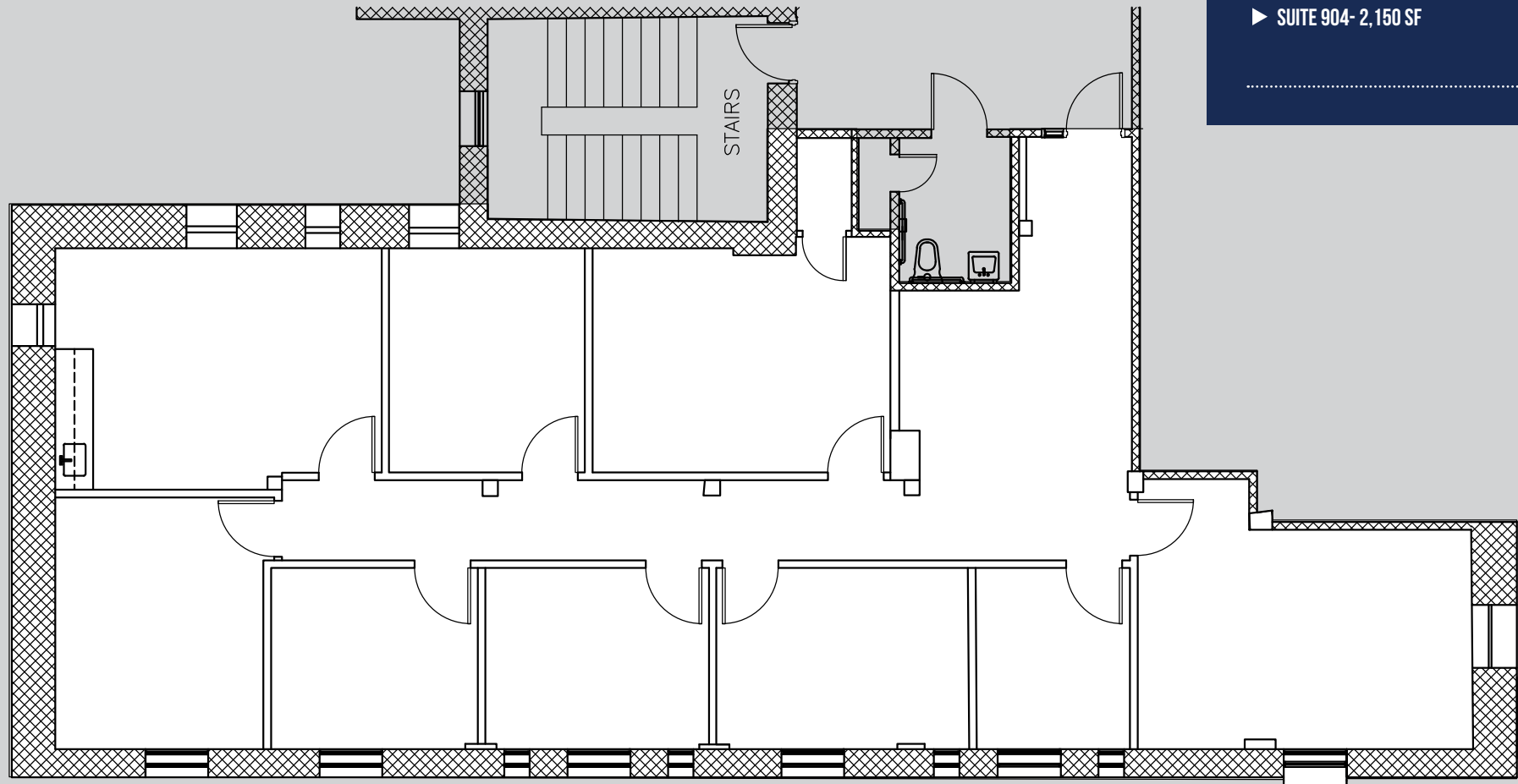
410.581.2520
WWW.DAVIDSBROWN.COM
100 PAINTERS MILL RD, OWINGS MILLS, MD

FOR LEASE

B BALTIMORE COUNTY, MD

THE WALBERT BUILDING

1800 NORTH CHARLES STREET BALTIMORE, MD 21201



AVAILABLE

▶ SUITE 904- 2,150 SF

FOR LEASE

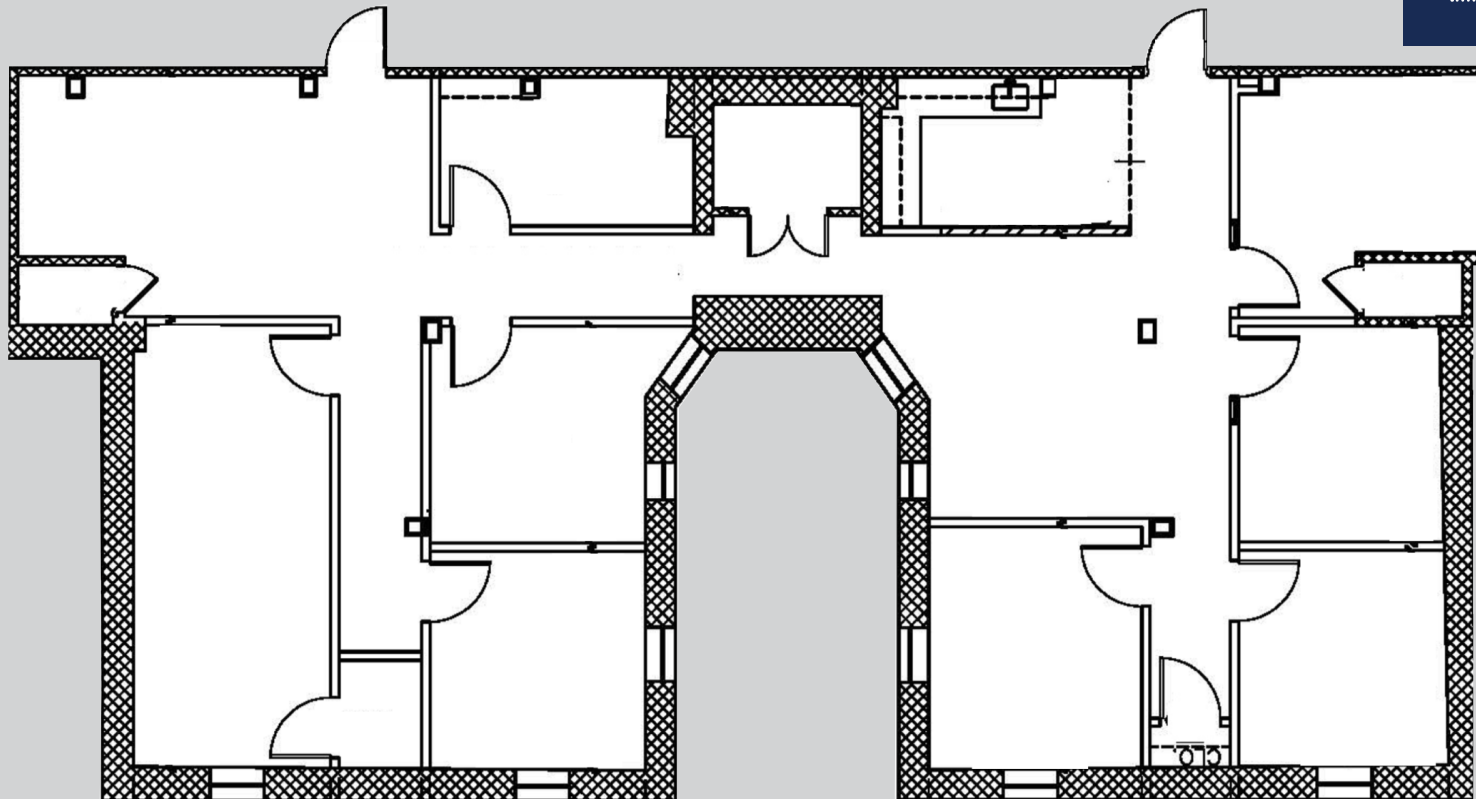
B BALTIMORE COUNTY, MD

THE WALBERT BUILDING

1800 NORTH CHARLES STREET BALTIMORE, MD 21201

AVAILABLE

▶ SUITE 906 - 2,323 SF

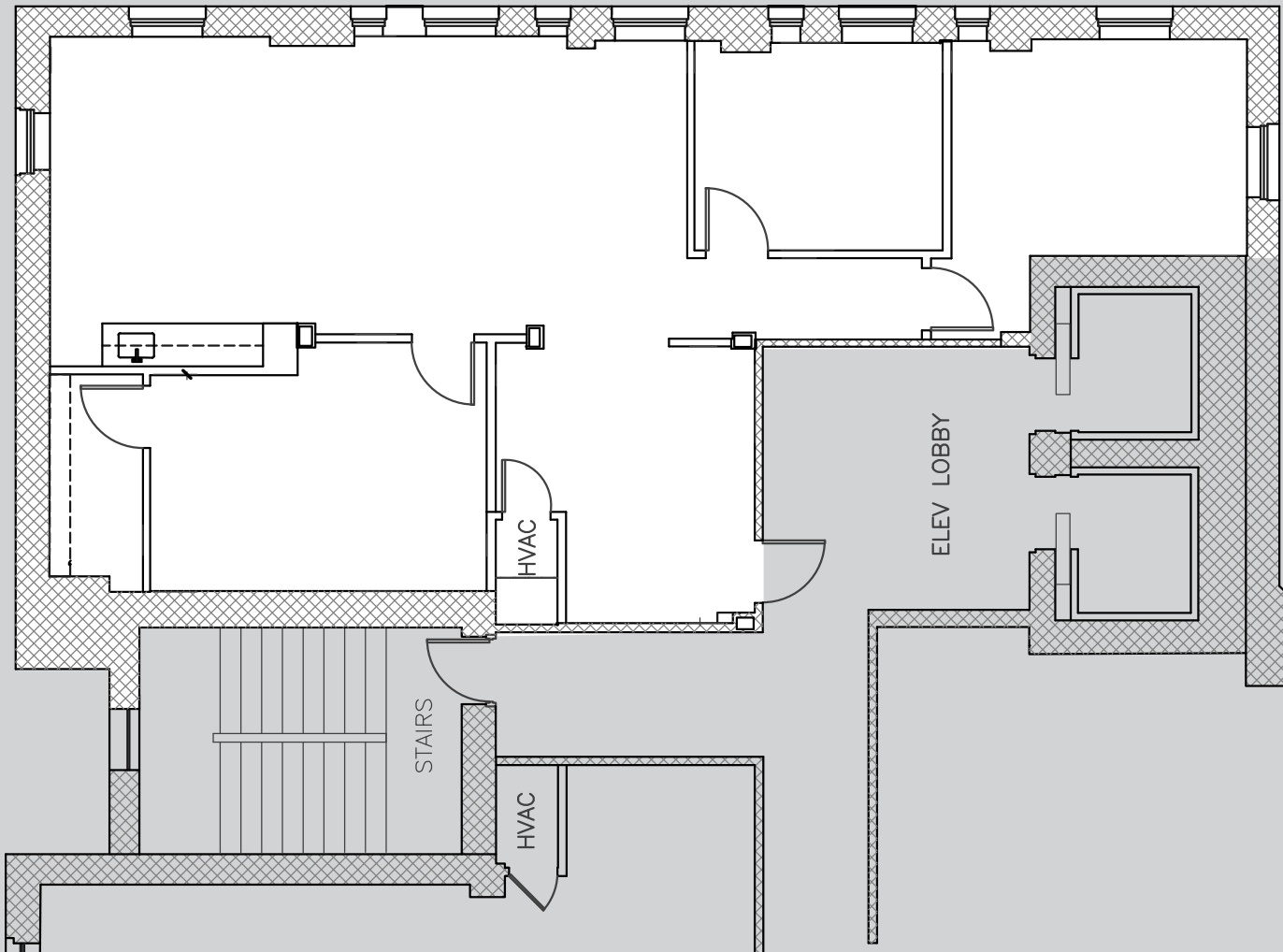


FOR LEASE

B BALTIMORE COUNTY, MD

THE WALBERT BUILDING

1800 NORTH CHARLES STREET BALTIMORE, MD 21201



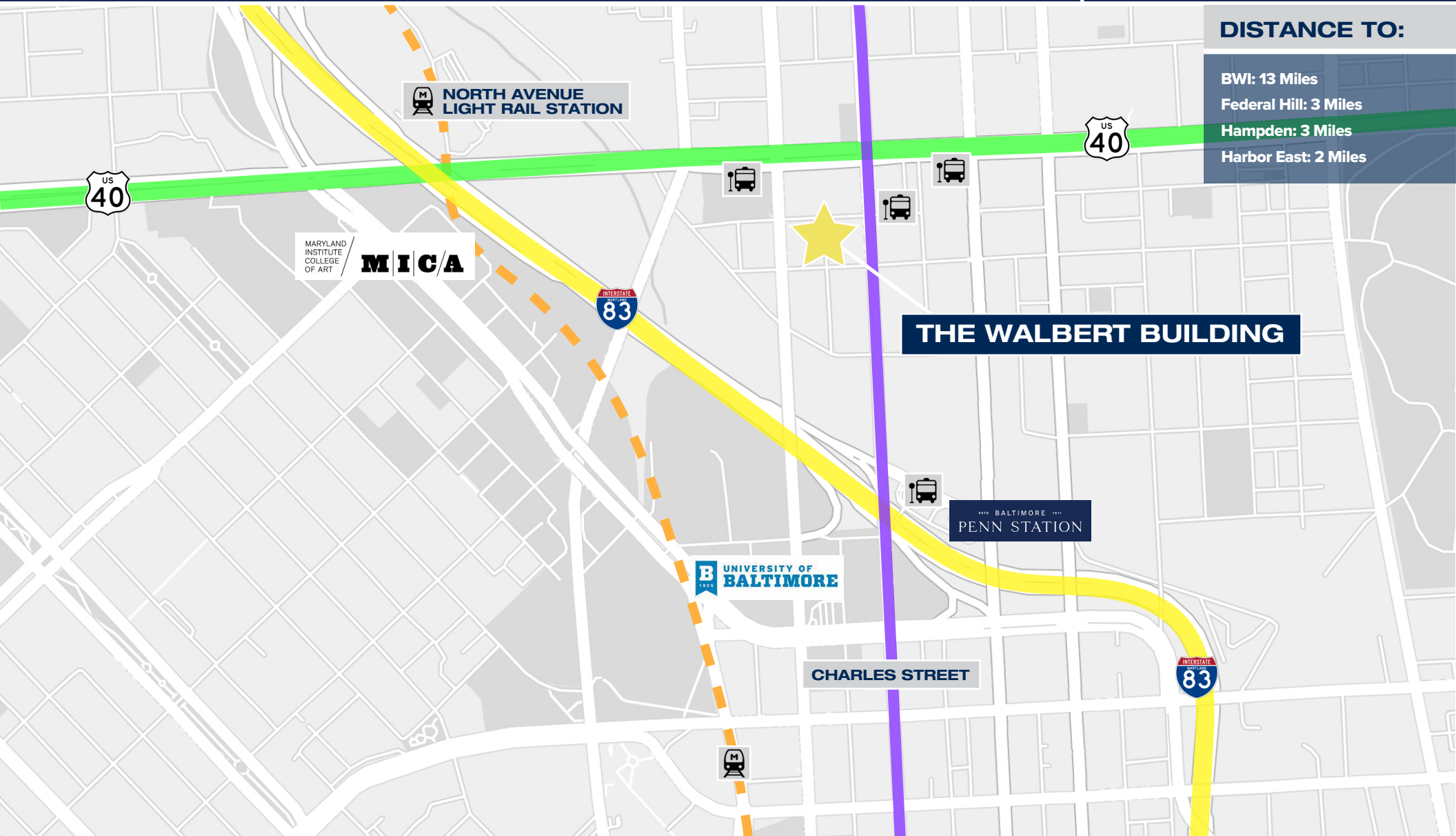
AVAILABLE

▶ SUITE 910 - 1,446 SF

THE WALBERT BUILDING

1800 NORTH CHARLES STREET BALTIMORE, MD 21201

MAP



DISTANCE TO:

- BWI: 13 Miles
- Federal Hill: 3 Miles
- Hampden: 3 Miles
- Harbor East: 2 Miles

THE WALBERT BUILDING

MARYLAND INSTITUTE COLLEGE OF ART
MICA

UNIVERSITY OF BALTIMORE

BALTIMORE
PENN STATION

CHARLES STREET