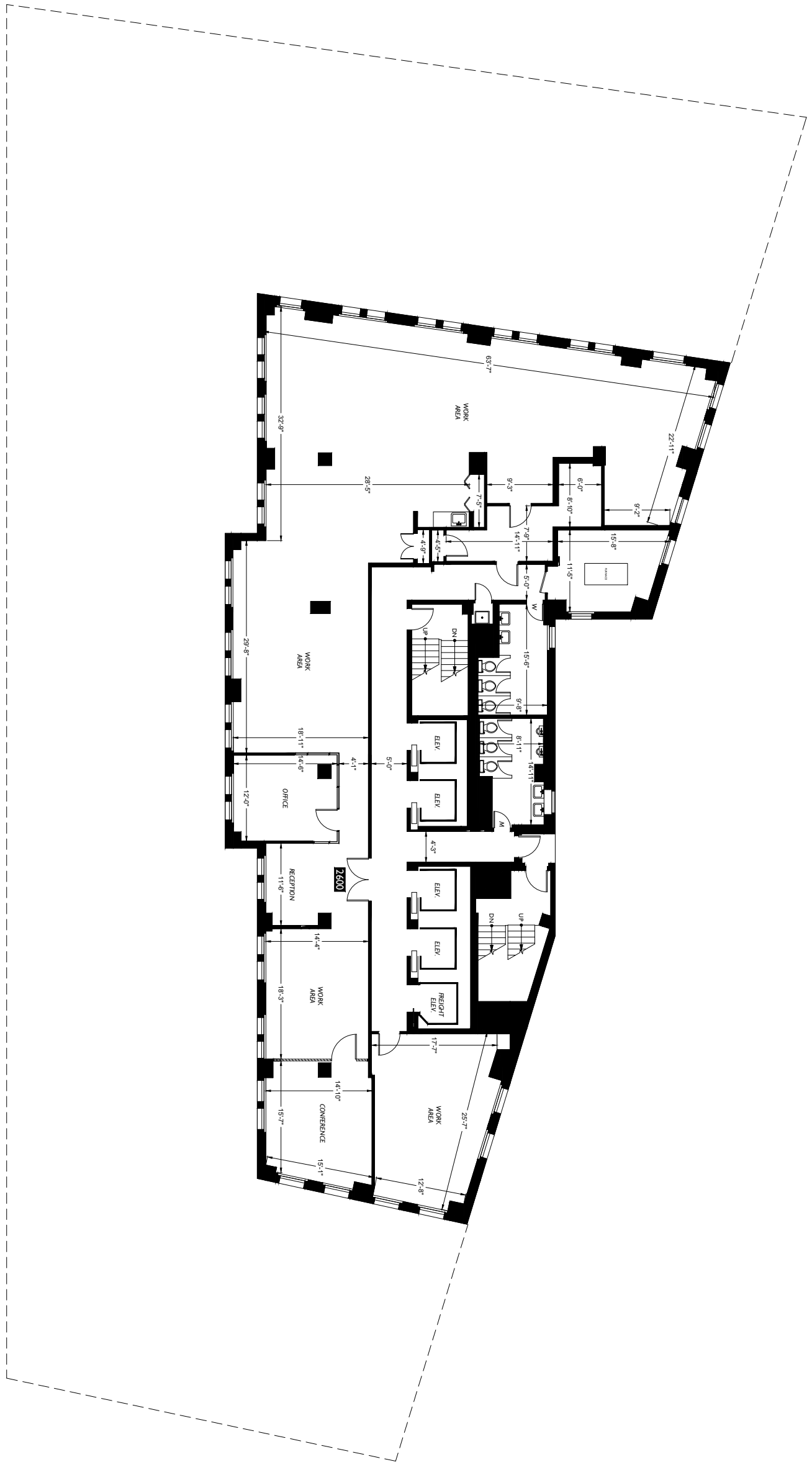


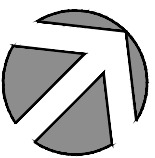
Cliff Street

Parking Lot

John Street



Pearl Street



Braun Management, Inc. 160 Broadway, First Floor New York, NY 10038	Office Building 111 John Street New York, NY 10038	<b>Floor Plan</b> <h1 style="text-align: center;">26</h1>		2DFLOORPLANS.COM 206-328-7410 600 NW Gilman Blvd. Suite E Issaquah, WA 98027
<b>Client</b>	<b>Subject</b>	<b>Floor</b>	<b>Scale</b>	Measured: September 2017 Project: C24-454