

24 ROLAND STREET
CHARLESTOWN, MA

CREATIVE OFFICE & FLEX SUITES

BRICK & BEAM + ON-SITE PARKING



AVAILABLE SPACE

3rd Floor: 1,825 SF



AVAILABLE

October 1, 2026

LEASE TERM

Flexible



ASKING RATE

\$29.00/SF
(Modified Gross)



Boston Realty Advisors is pleased to present **1,825 SF** for lease at **24 Roland Street**. This true “Brick & Beam” building features a plentiful amount of windows allowing for an abundance of natural light, high exposed ceilings throughout, on-site parking, and is located in between 2 of Boston’s fastest growing submarkets.

BUILDING HIGHLIGHTS



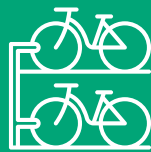
AVAILABLE BASEMENT SPACE/STORAGE



AVAILABLE ON-SITE PARKING



LOADING DOCK ACCESS



BIKE STORAGE/RACK

CONNECTIVITY



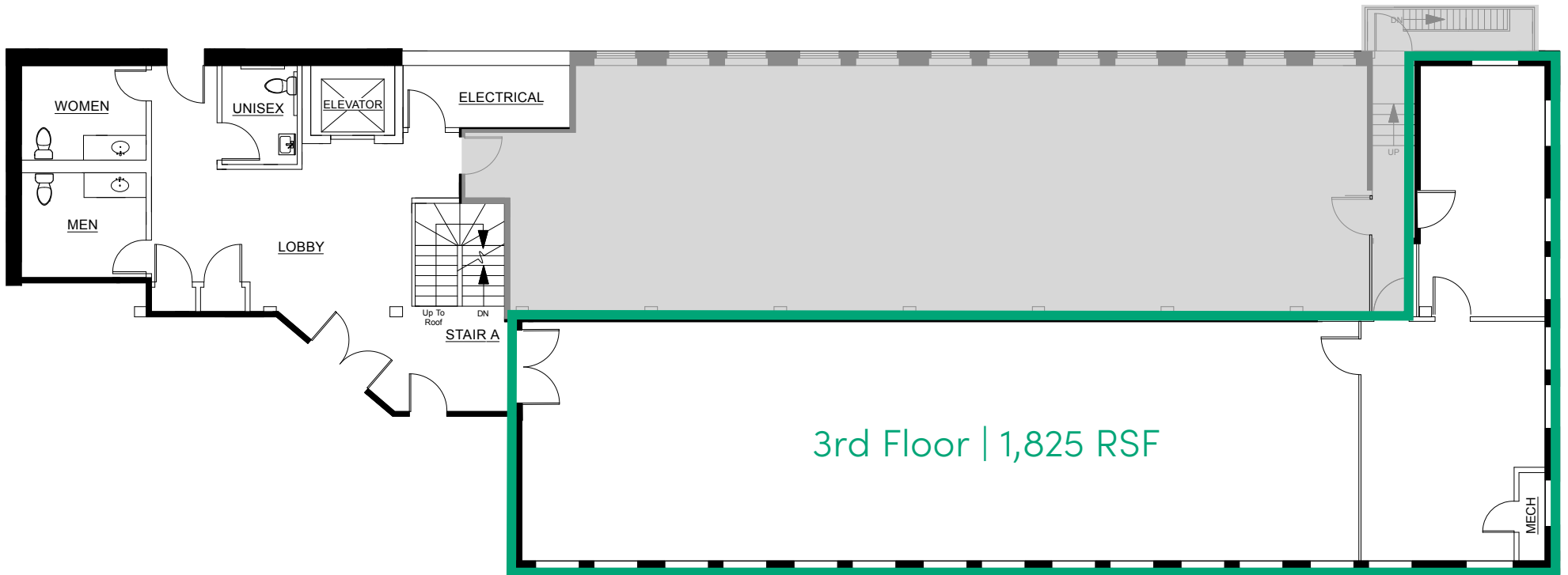
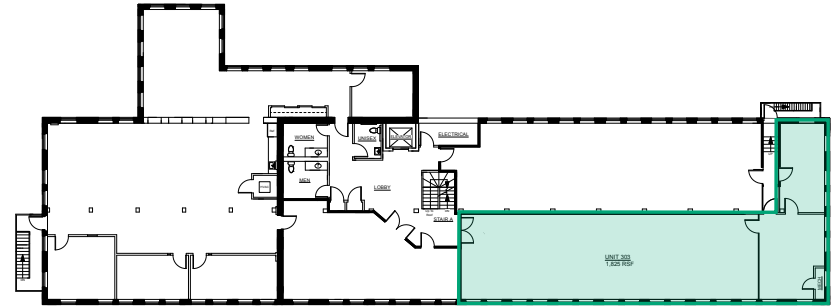
- COMCAST
- VERIZON PHONE



3RD FLOOR (AVAIL. 10/1/26)

1,825 SF

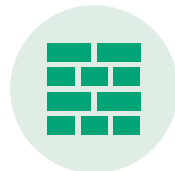
*Plan not to scale.



ROLAND STREET



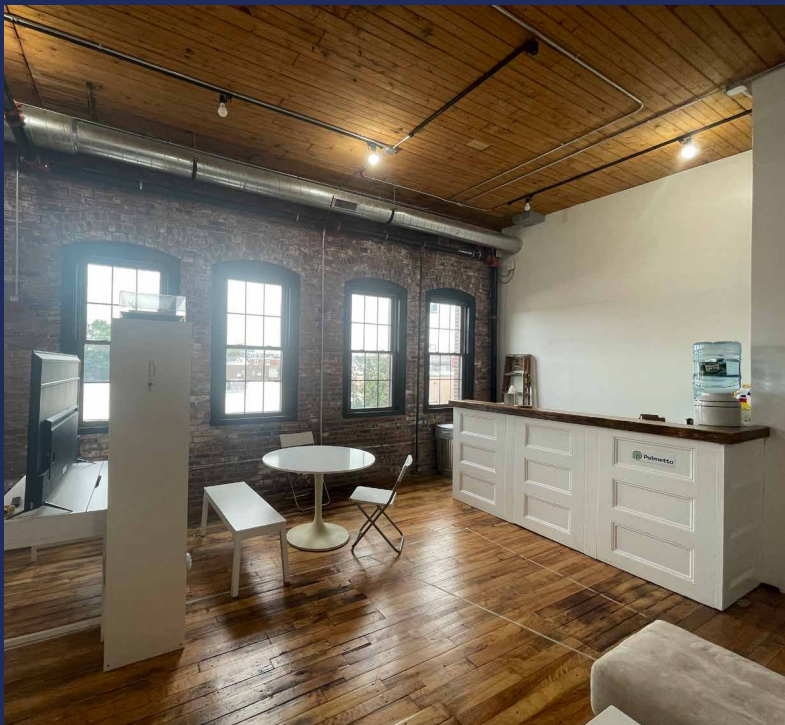
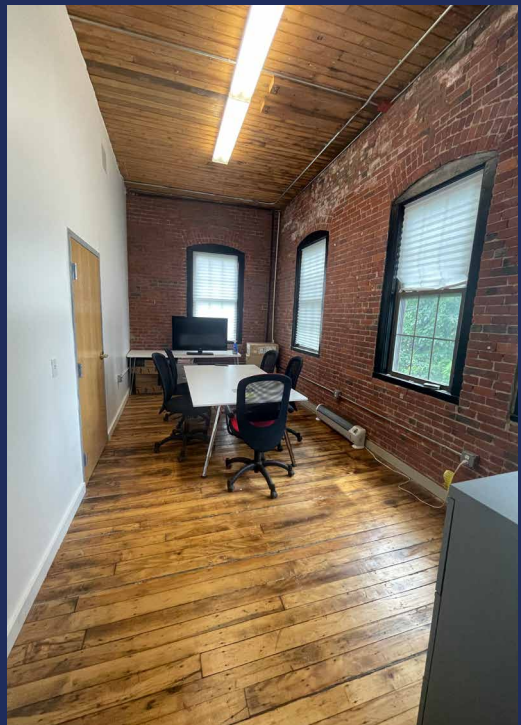
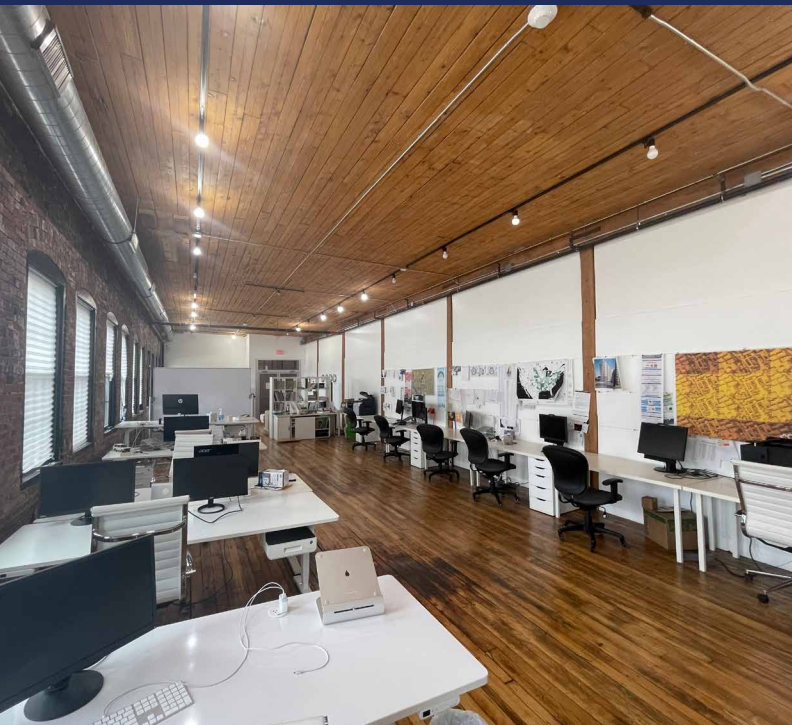
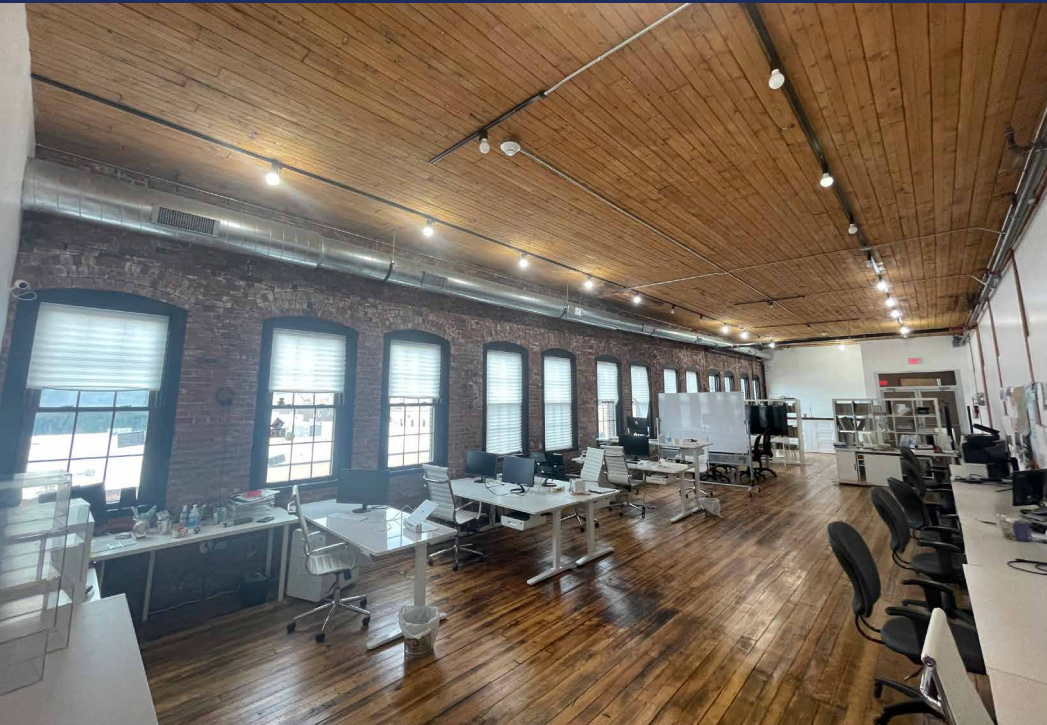
**11+ FT
CEILING HEIGHT**



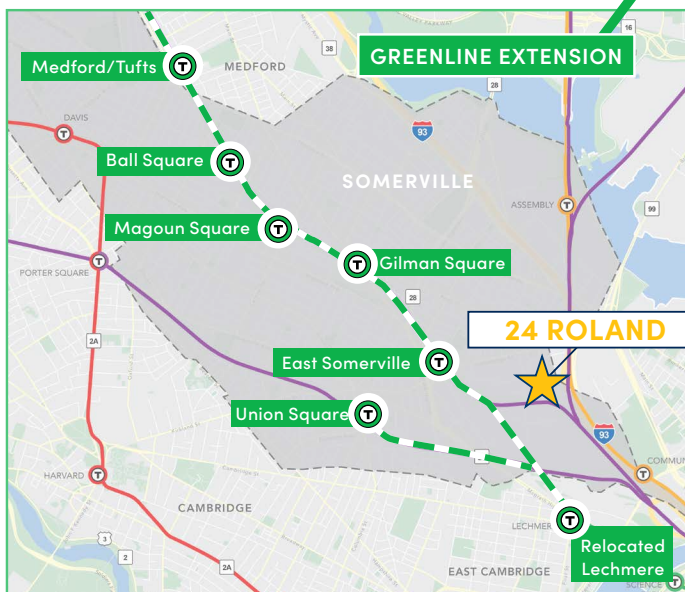
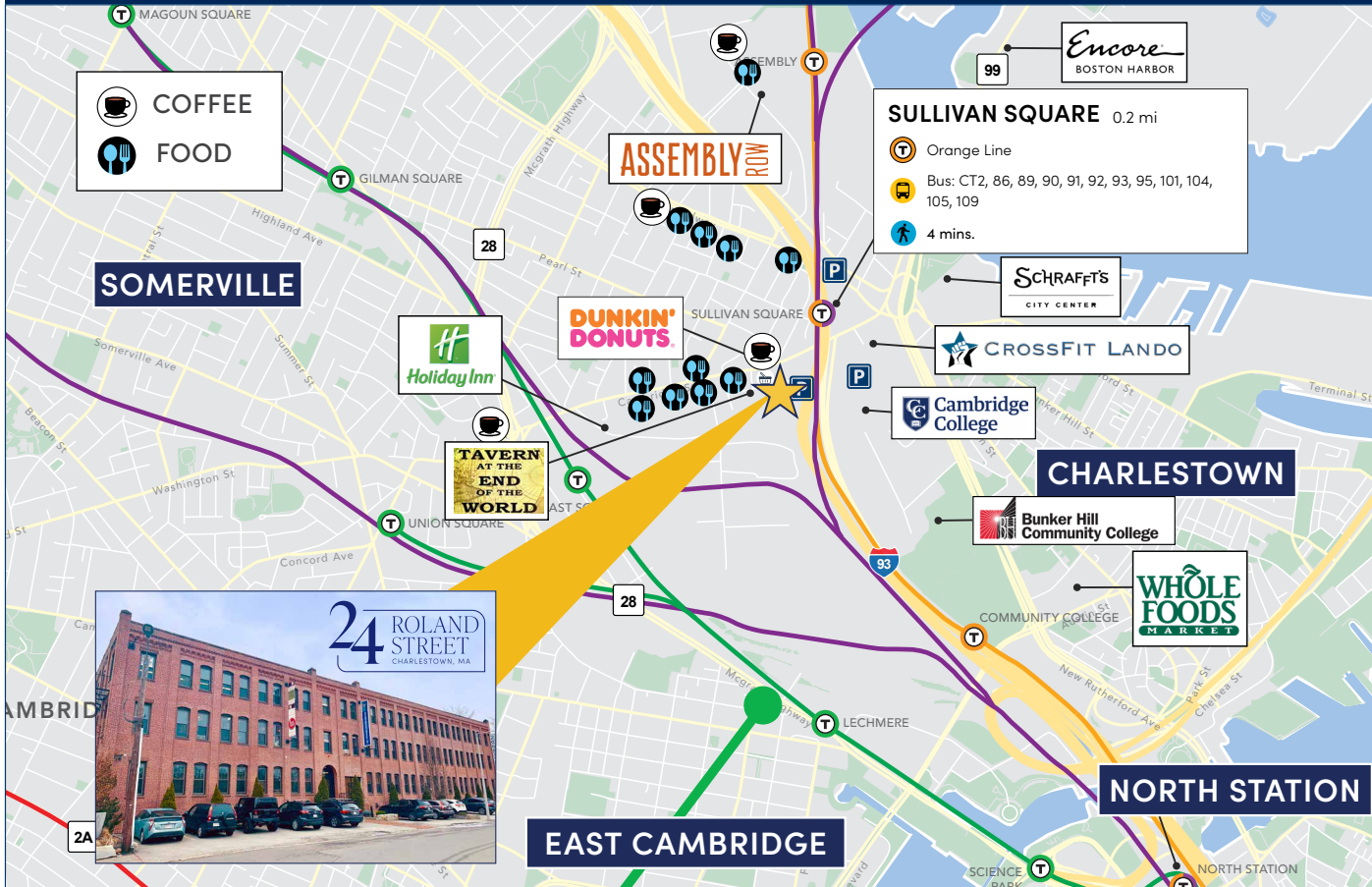
**BEAUTIFUL EXPOSED
BRICK & BEAM
THROUGHOUT**



**22 WINDOWS:
ABUNDANCE OF
NATURAL LIGHT**



LOCATION



4 MIN WALK TO MBTA'S SULLIVAN SQ.
- ORANGE LINE & BUS ROUTES



3 MINS - THE SCHRAFFT CENTER
5 MINS - ASSEMBLY SQUARE
5 MINS - NORTH STATION
11 MINS - HARVARD SQUARE
12 MINS - TO ROUTE 128

JUSTIN D. HARLOW

Managing Director

617.850.9613

jharlow@bradvisors.com

OWEN MURPHY

Associate

617.850.9665

omurphy@bradvisors.com



Boston Realty Advisors

136 Newbury Street | Boston, MA 02116
617.375.7900 | BRAdvisors.com

© Copyright Boston Realty Advisors. All rights reserved. The information contained here has been obtained through sources deemed reliable but cannot be guaranteed as to its accuracy. Any information of special interest should be obtained through independent verification.