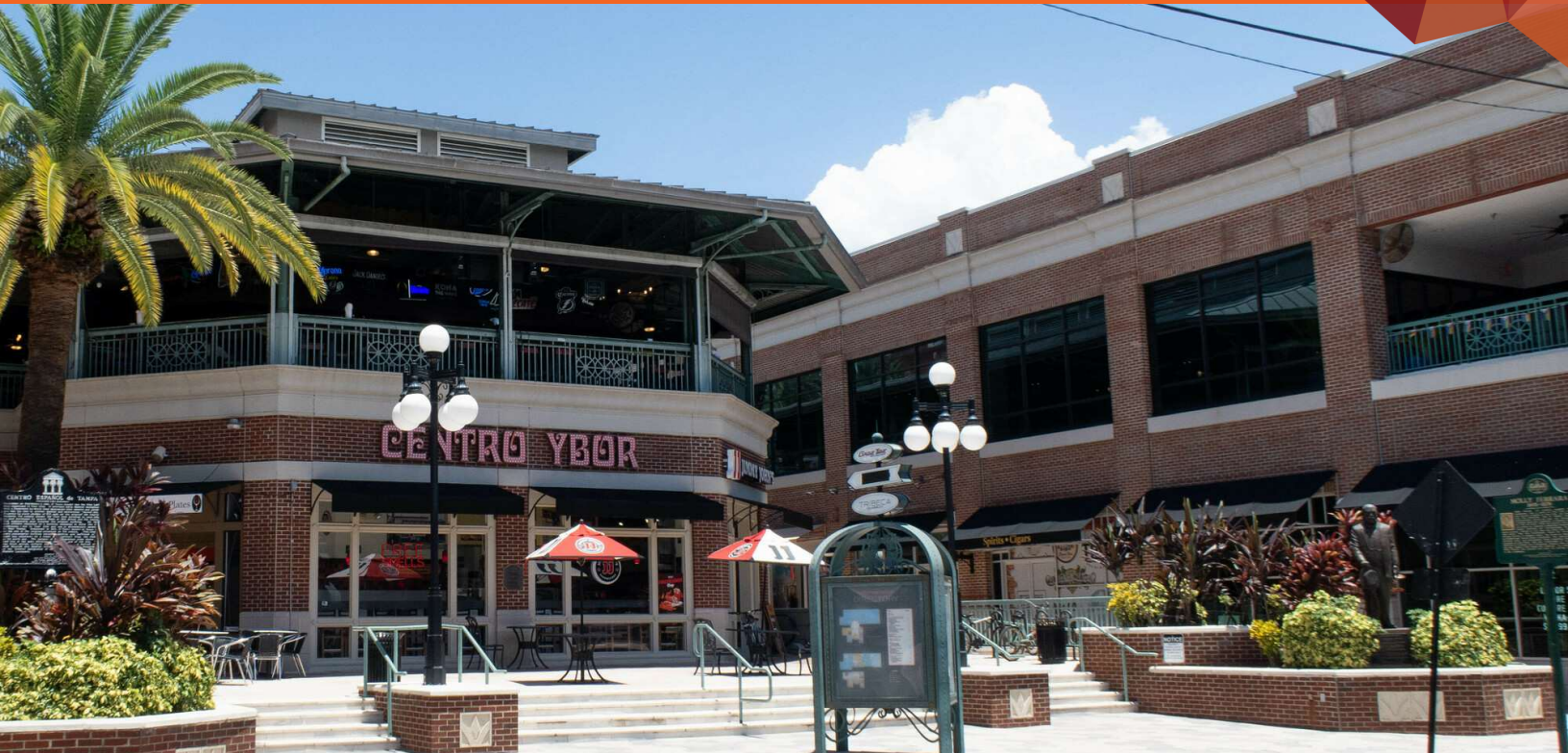


# CENTRO YBOR

1600 EAST 7TH AVENUE, TAMPA, FL 33605

# FOR LEASE




## LOCATION DESCRIPTION

Centrally located within historic Ybor City

## PROPERTY HIGHLIGHTS

- 1,751 SF & 6,180 SF 1st floor retail spaces
- 18,054 SF 1st and 2nd floor retail/office space
- Skins Par & Grill and Brown Bag Coffee Coming Soon!
- Centrally located within Ybor City Historic District
- Multi-story mixed-used development that consists of restaurants, retail, office and fitness
- Walking distance to new developments, including Hotel Haya and Gasworx
- Direct access to TECO streetcar connecting Ybor with Channelside, downtown Tampa, and Tampa Convention Center  
\*Space can be combined



 DEMOGRAPHICS	1 MILE	3 MILES	5 MILES
Total Population	17,367	115,106	257,196
Daytime Population	32,012	189,294	381,713
Households	8,933	50,648	108,353
Average HH Income	\$75,235	\$104,539	\$104,052



**DOUG HOLTZMAN**

doug.holtzman@tscg.com

813.547.6804

# CENTRO YBOR

1600 EAST 7TH AVENUE, TAMPA, FL 33605

# FOR LEASE

## FIRST FLOOR



## SECOND FLOOR



SUITE	TENANT NAME	SPACE SIZE
A106	Available	5,653 SF
A113	Brown Bag Coffee	290 SF
A114	At Lease	288 SF
A117	Centro Ybor Fitness Center	6,506 SF
A121	Available	11,429 SF
A121 (cont'd)	Available	6,625 SF
A123	Tampa Bay Brewing Company	10,844 SF
A132	Third Lake Partners	9,088 SF
A132	Third Lake Partners	9,088 SF
A133-A	Bolin Law Group	9,427 SF
A133-B	Ashley Global Retail	9,715 SF
A147	GameTime	29,227 SF
A150	Centro Ybor Property Manage...	1,042 SF

SUITE	TENANT NAME	SPACE SIZE
B104	Ybor City Chamber of Commer...	2,521 SF
C102	Available	6,180 SF
C112	Funny Bone Comedy Club	9,046 SF
C112 (cont'd)	Available	3,908 SF
D101	Asiatic	2,451 SF
D102	Ybor City Society Wine Bar	976 SF
D103	Jimmy John's Sandwiches	1,437 SF
E100	MAYDAY Ice Cream	1,226 SF
E108	Available	1,751 SF
E109	YUMASolutions	1,141 SF
E111	At Lease	1,142 SF
E112	At Lease	1,072 SF
E113	Ybor City Tap House	3,334 SF

SUITE	TENANT NAME	SPACE SIZE
A200	INDUSTRIOUS	34,440 SF
A200	INDUSTRIOUS	34,440 SF
A208	Third Lake Partners	6,546 SF
A210	Third Lake Capital	3,410 SF
A250	Ashley Global Retail	58,505 SF
C201-A	BOS Haworth	8,386 SF
C201-B	Available	2,024 SF
C210	Samurai Blue Sushi	3,230 SF
C212	Available	935 SF
D204	Green Parrot Cantina	3,391 SF
E200	Skins Par & Grill	8,046 SF
E202	Skins Par & Grill	5,583 SF

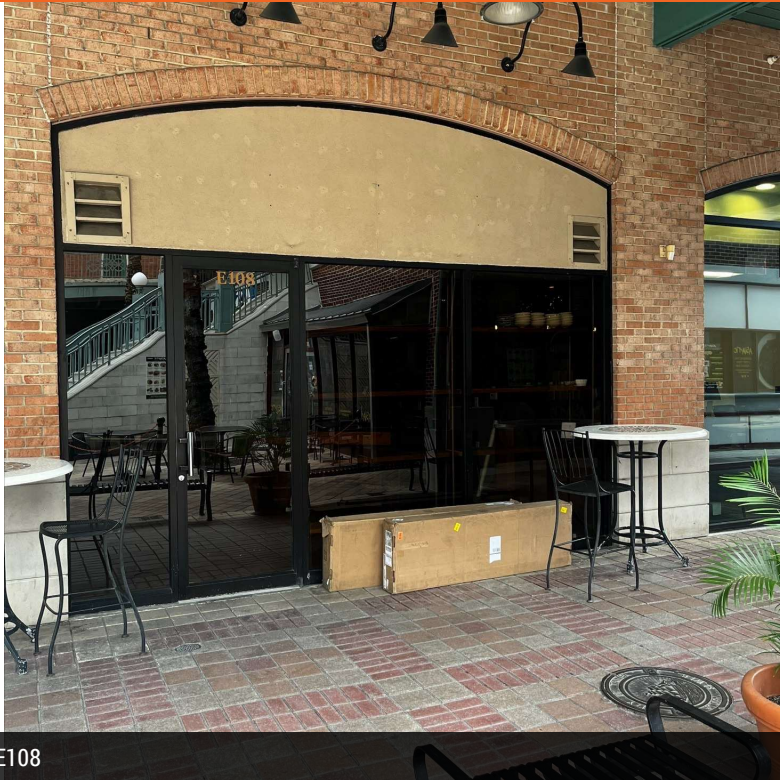


**DOUG HOLTZMAN**  
 doug.holtzman@tscg.com  
 813.547.6804

# CENTRO YBOR

1600 EAST 7TH AVENUE, TAMPA, FL 33605

# FOR LEASE



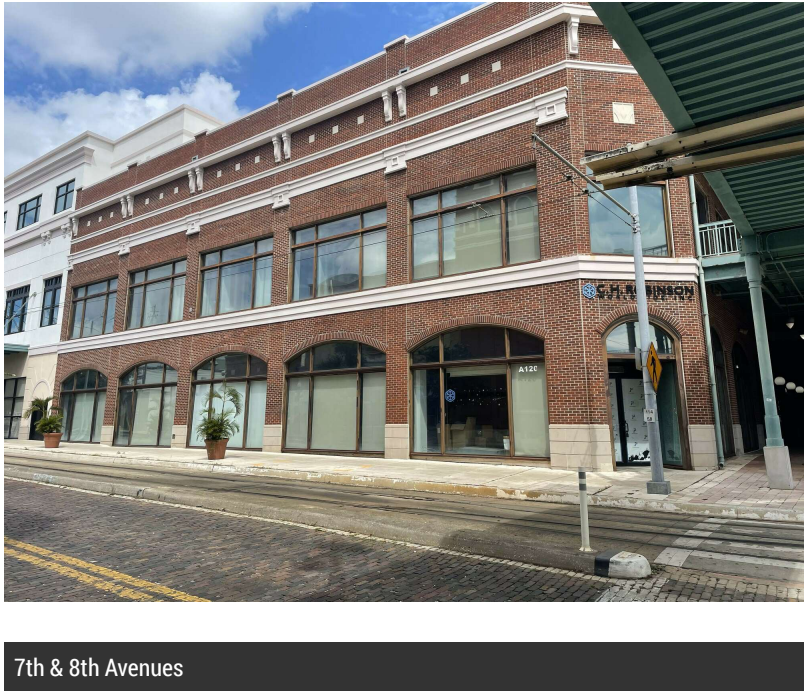
E108



E108 Interior



Centro Ybor



7th & 8th Avenues



**DOUG HOLTZMAN**  
doug.holtzman@tscg.com  
813.547.6804

# CENTRO YBOR

# FOR LEASE

1600 EAST 7TH AVENUE, TAMPA, FL 33605



**DOUG HOLTZMAN**  
doug.holtzman@tscg.com  
813.547.6804