



FOR SALE OR LEASE | 6,403 SF

WATERFRONT PARK PLACE | 222 EAST WITHERSPOON STREET

PROPERTY HIGHLIGHTS

Office space available on the fourth floor of the prestigious Waterfront Park Place building. Located across the street from Waterfront Park's Great Lawn and adjacent to Louisville Slugger Field, this property provides unparalleled access to the many amenities of Downtown Louisville. The space features lots of natural light, many offices and meeting rooms, and a balcony with a riverfront view.

Building Size: 351,079 sf

Space Available: 6,403 sf

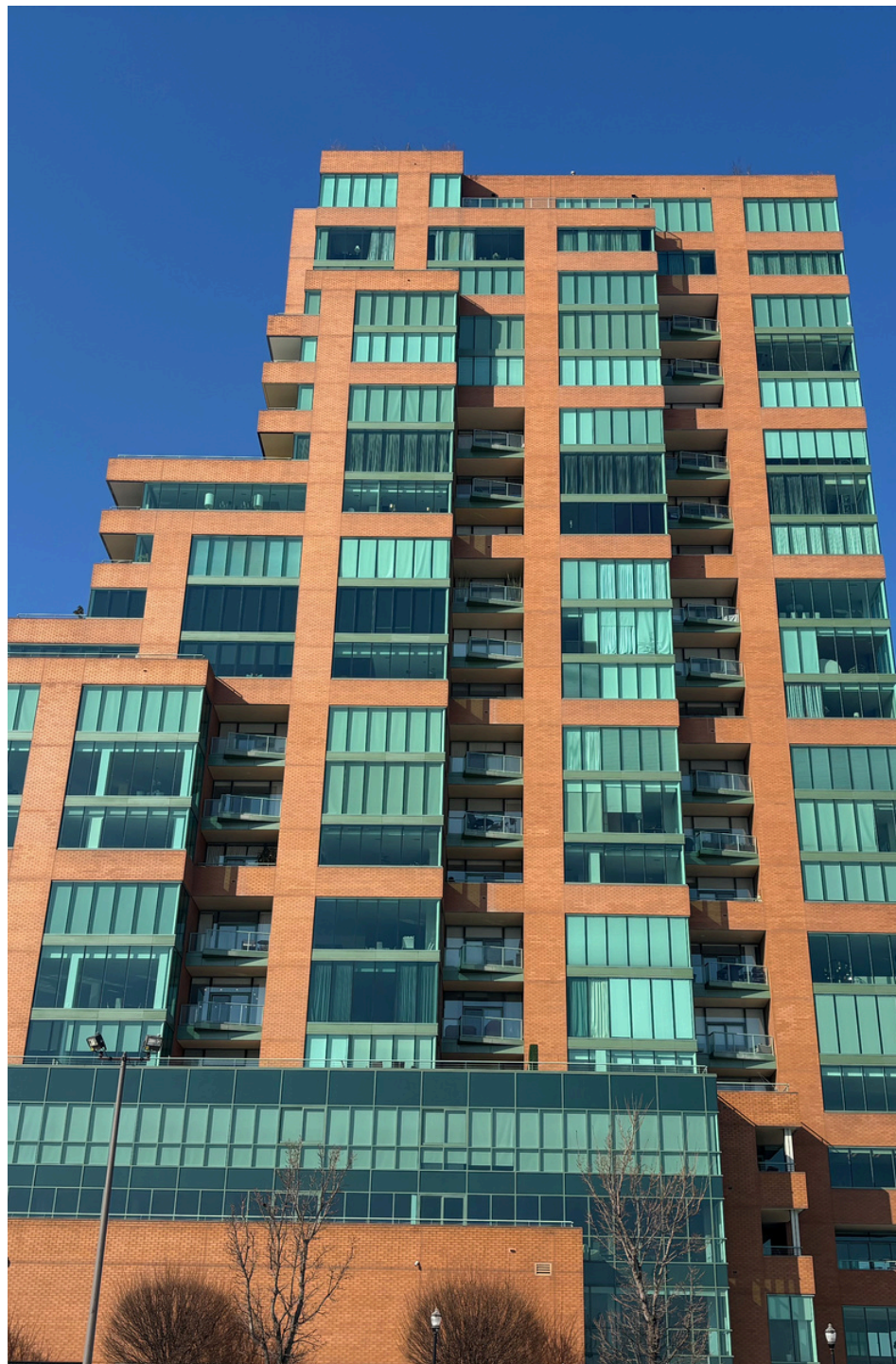
Suites Available: 401, 402 & 403

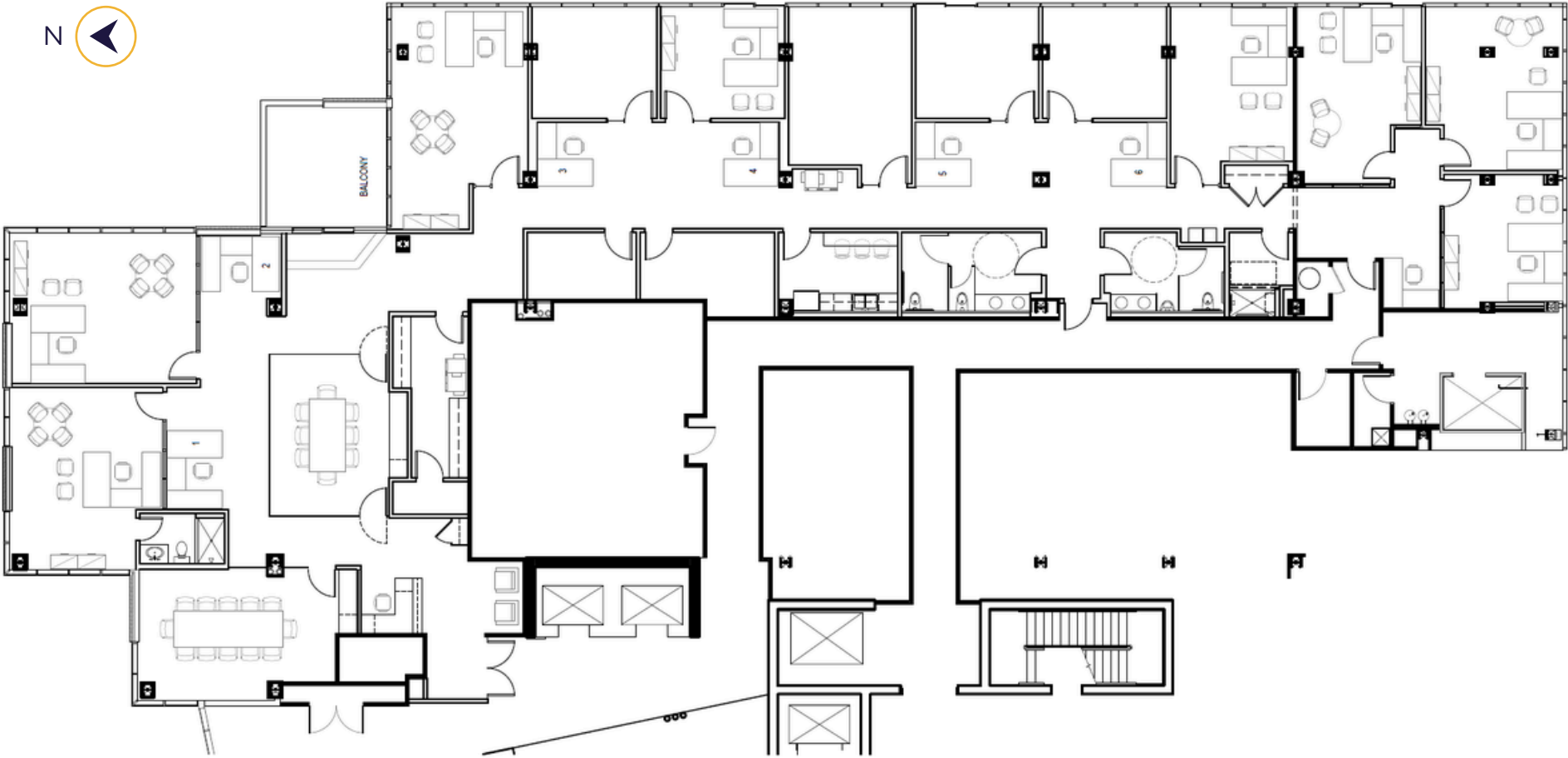
Zoning: C-3

Year Built: 2004

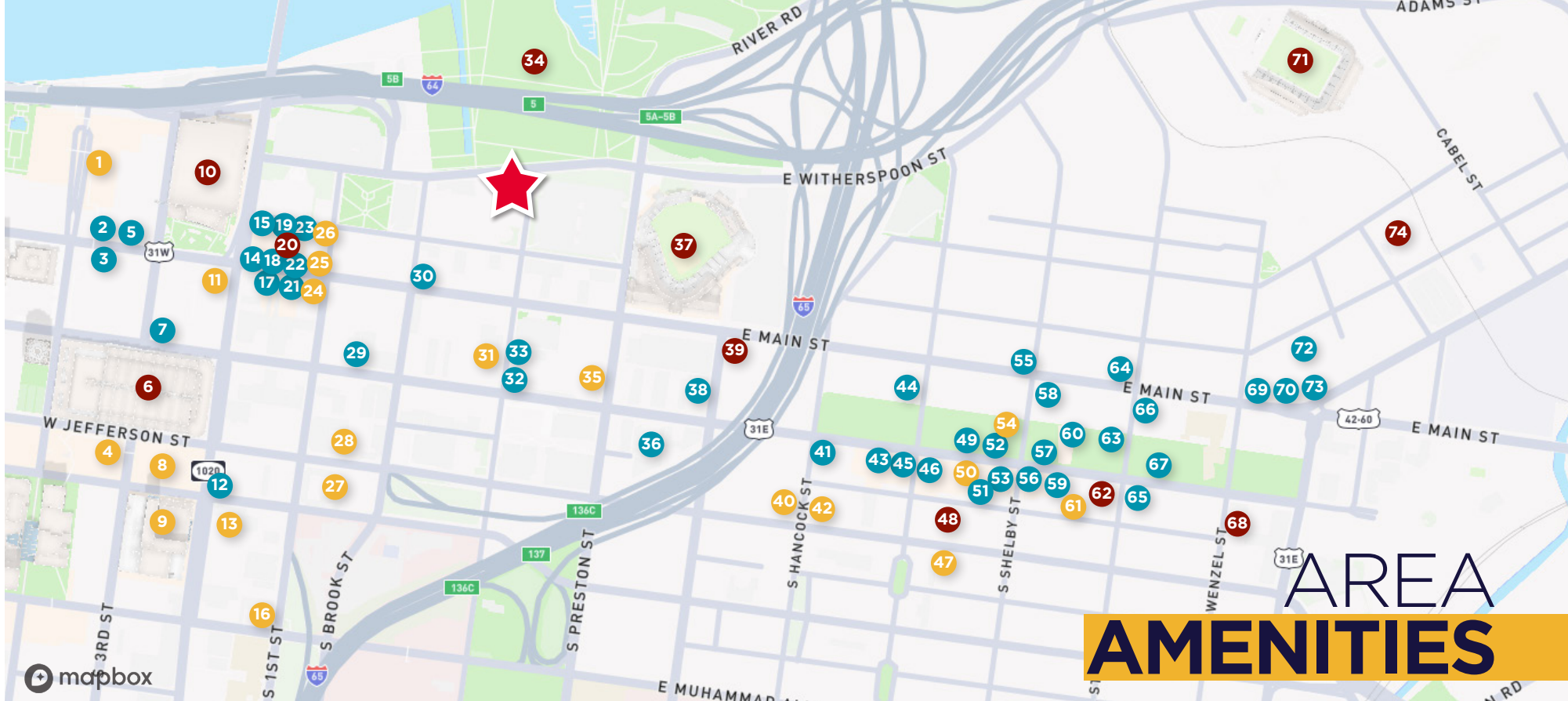
Class: Class A

Parking: 3 attached garage spaces - additional parking available in garage behind the building and in adjacent surface lot





FLOOR PLAN
6,403 SF



AREA AMENITIES

RESTAURANTS/BARS

- | | | |
|--------------------------------|----------------------------------|-----------------------------------|
| 2. Jeff Ruby's | 38. Los Aztecas | 64. Nami Modern Korean Steakhouse |
| 3. InSeason Harvest Kitchen | 41. The Last Refuge | 65. Feast BBQ |
| 5. Down One Bourbon Bar | 43. Louisville Cream | 66. Biscuit Belly |
| 7. The Old Spaghetti Factory | 44. Goodwood Brewing | 67. Guaca Mole Modern Mexican |
| 12. Parlour Pizza | 45. MeeshMeesh Mediterranean | 69. Cultured |
| 14. Monk's Road Boiler House | 46. Garage Bar | 70. Big Nita's Cheesecakes |
| 15. Troll Pub Under the Bridge | 49. La Bodeguita De Mima | 72. TEN20 Craft Brewery |
| 17. Merle's Whiskey Kitchen | 51. Galaxie | 73. Pho Ba Luu |
| 18. Doc Crow's | 52. bar Vetti | |
| 19. Hell or High Water | 53. Royals Hot Chicken | |
| 21. Barrel Bar & Grill | 55. Butchertown Grocery Bakery | |
| 22. O'Shea's | 56. Please & Thank You | |
| 23. Nic & Norman's | 57. Mayan Cafe | |
| 29. White Castle | 58. Quills Coffee | |
| 30. Ehrler's Ice Cream | 59. Lou Lou on Market | |
| 32. Jimmy John's | 60. Nulu Market Place/West Sixth | |
| 33. Wild Eggs | 63. Grind Burger Kitchen | |
| 36. McDonald's | | |

ATTRACTIONS

- | | |
|---|-------------------------------|
| 6. Kentucky International Convention Center | 39. Angel's Envy Distillery |
| 10. KFC Yum! Center | 48. Rabbit Hole Distillery |
| 20. Old Forester Distillery | 62. Five Iron Golf |
| 34. Waterfront Park Great Lawn | 68. Climb NuLu |
| 37. Louisville Slugger Field | 71. Lynn Family Stadium |
| | 74. Copper & Kings Distillery |

HOSPITALITY

- | | |
|--------------------|----------------------------|
| 1. The Galt House | 27. Springhill Suites |
| 4. Hyatt Regency | 28. Hampton Inn |
| 8. Marriott | 31. Cambria Hotel |
| 9. Omni Louisville | 35. Residence Inn |
| 11. Courtyard | 40. Home2 Suites by Hilton |
| 13. Econo Lodge | 42. Hancock House |
| 16. Holiday Inn | 47. Tempo by Hilton |
| 24. Aloft | 50. Hotel Genevieve |
| 25. Hotel Distil | 54. AC Hotel |
| 26. Moxy | 61. Stellar Suites |



CONTACT INFORMATION

E.P. SCHERER

Senior Director

epscherer@commercialkentucky.com

+1 502 719 3234

BRENT DOLEN, SIOR, CCIM

Senior Director

bdolen@commercialkentucky.com

+1 502 719 3262



©2026 Cushman & Wakefield. All rights reserved. The information contained in this communication is strictly confidential. This information has been obtained from sources believed to be reliable but has not been verified. NO WARRANTY OR REPRESENTATION, EXPRESS OR IMPLIED, IS MADE AS TO THE CONDITION OF THE PROPERTY (OR PROPERTIES) REFERENCED HEREIN OR AS TO THE ACCURACY OR COMPLETENESS OF THE INFORMATION CONTAINED HEREIN, AND SAME IS SUBMITTED SUBJECT TO ERRORS, OMISSIONS, CHANGE OF PRICE, RENTAL OR OTHER CONDITIONS, WITHDRAWAL WITHOUT NOTICE, AND TO ANY SPECIAL LISTING CONDITIONS IMPOSED BY THE PROPERTY OWNER(S). ANY PROJECTIONS, OPINIONS OR ESTIMATES ARE SUBJECT TO UNCERTAINTY AND DO NOT SIGNIFY CURRENT OR FUTURE PROPERTY PERFORMANCE.

Independently Owned & Operated / A Member of the Cushman & Wakefield Alliance