

FOR LEASE

# GATOR TOWN & COUNTRY PLAZA

INVESTMENTS 501 N BENEVA RD | SARASOTA, FL 34232



## PROPERTY OVERVIEW

- Anchored by Bealls, Planet Fitness Dollar Tree & Tire Kingdom
- Shadow Anchored by Publix
- Newly Renovated
- GLA of +/- 134,298 SF

## LOCATION OVERVIEW

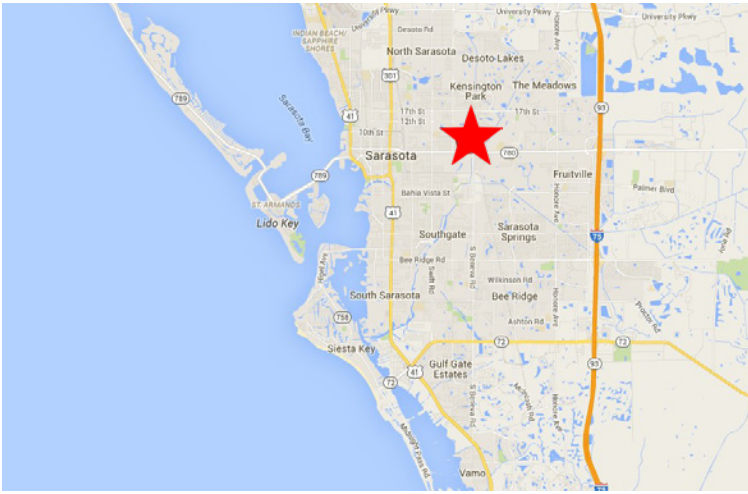
- Located in East Sarasota
- Nearest Intersection: N Beneva Rd. & Fruitville Rd.
- Sarasota County
- Traffic Count: 17,500 AADT

[www.GatorInvestments.com](http://www.GatorInvestments.com)

7850 NW 146th Street, 4th Floor | Miami Lakes | FL 33016

James A. Goldsmith, Lic. Real Estate Broker

**LEASING INFO: 877.459.9605**  
[Leasing@GatorInvestments.com](mailto:Leasing@GatorInvestments.com)



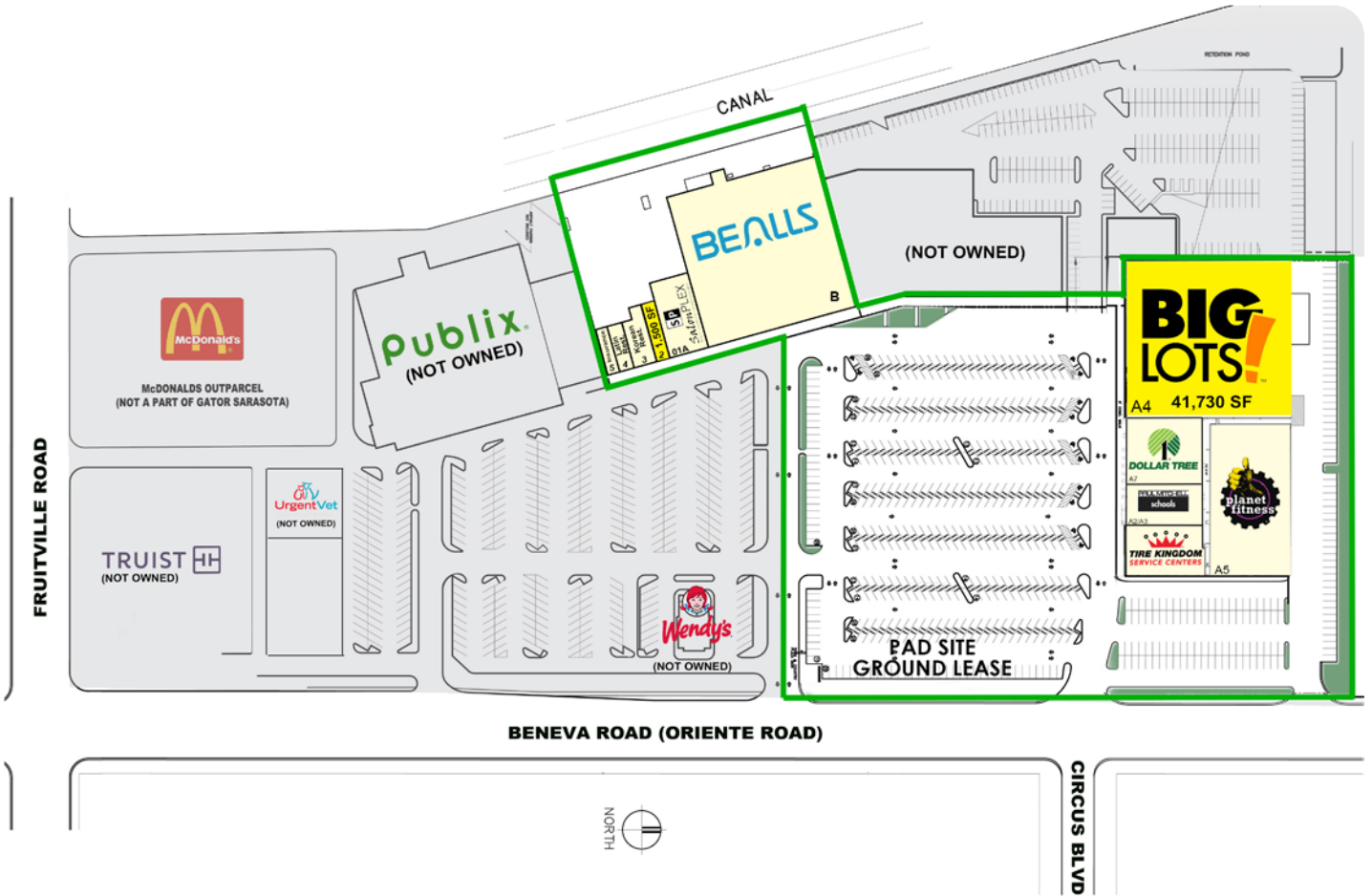
## DEMOGRAPHICS

• 2021

**501 N BENEVA RD  
SARASOTA, FL 34232**

| TRADE AREA     | 1 MILE   | 3 MILE   | 5 MILE   |
|----------------|----------|----------|----------|
| POPULATION     | 13,198   | 93,536   | 179,692  |
| AVG. HH INCOME | \$71,574 | \$79,532 | \$86,546 |
| AVG. AGE       | 46       | 47       | 49       |

**SPACE AVAILABLE**



Owned and Operated By A  
**GATOR**  
Affiliated Company

[www.GatorInvestments.com](http://www.GatorInvestments.com)  
7850 NW 146th Street, 4th Floor | Miami Lakes | FL 33016  
James A. Goldsmith, Lic. Real Estate Broker

**LEASING INFO: 877.459.9605**  
[Leasing@GatorInvestments.com](mailto:Leasing@GatorInvestments.com)

The information contained here is subject to errors, omissions and changes without notice. This is being provided without warranty of any kind, either expressed or implied and does not constitute an offer to sell or lease.