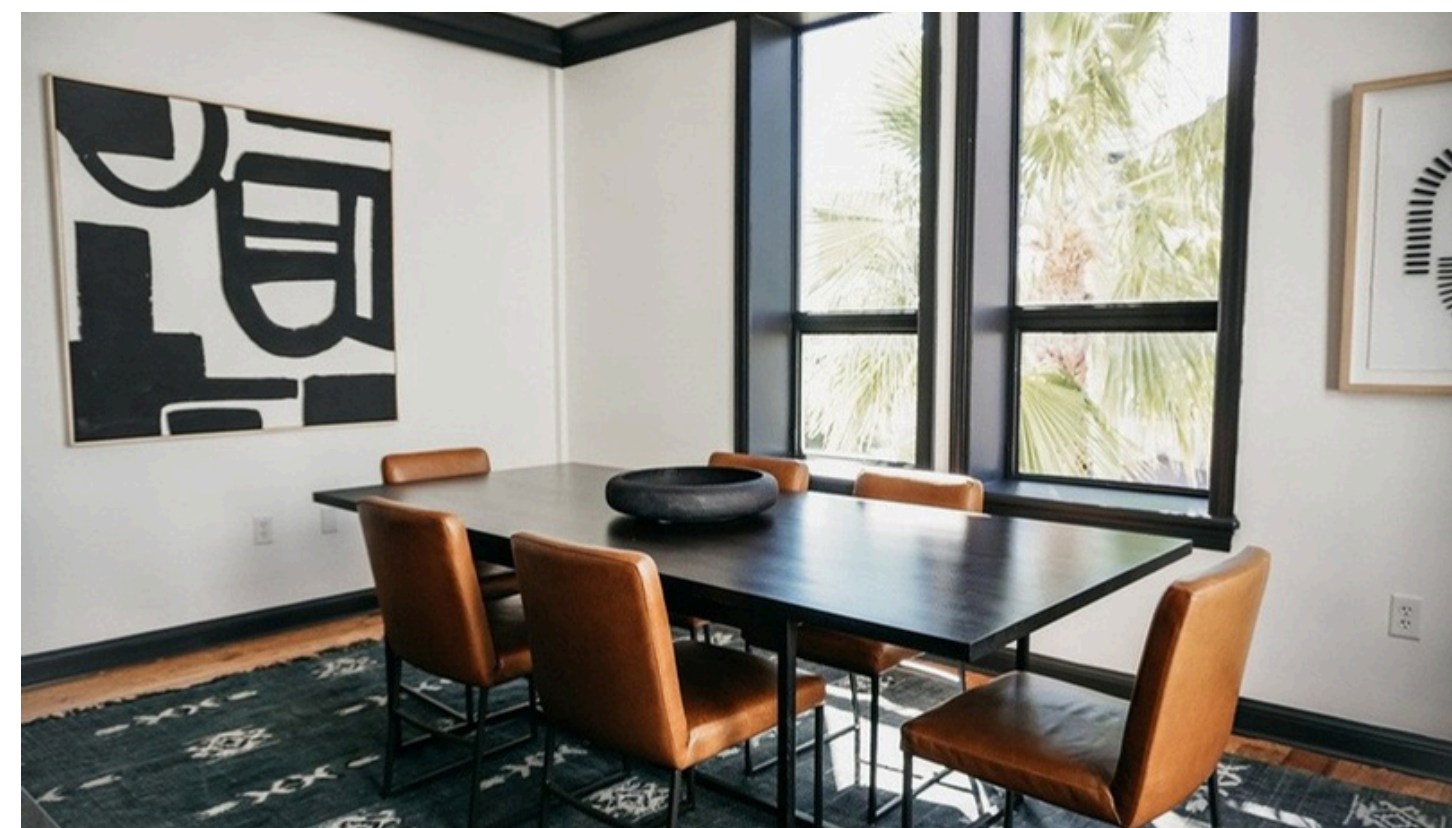
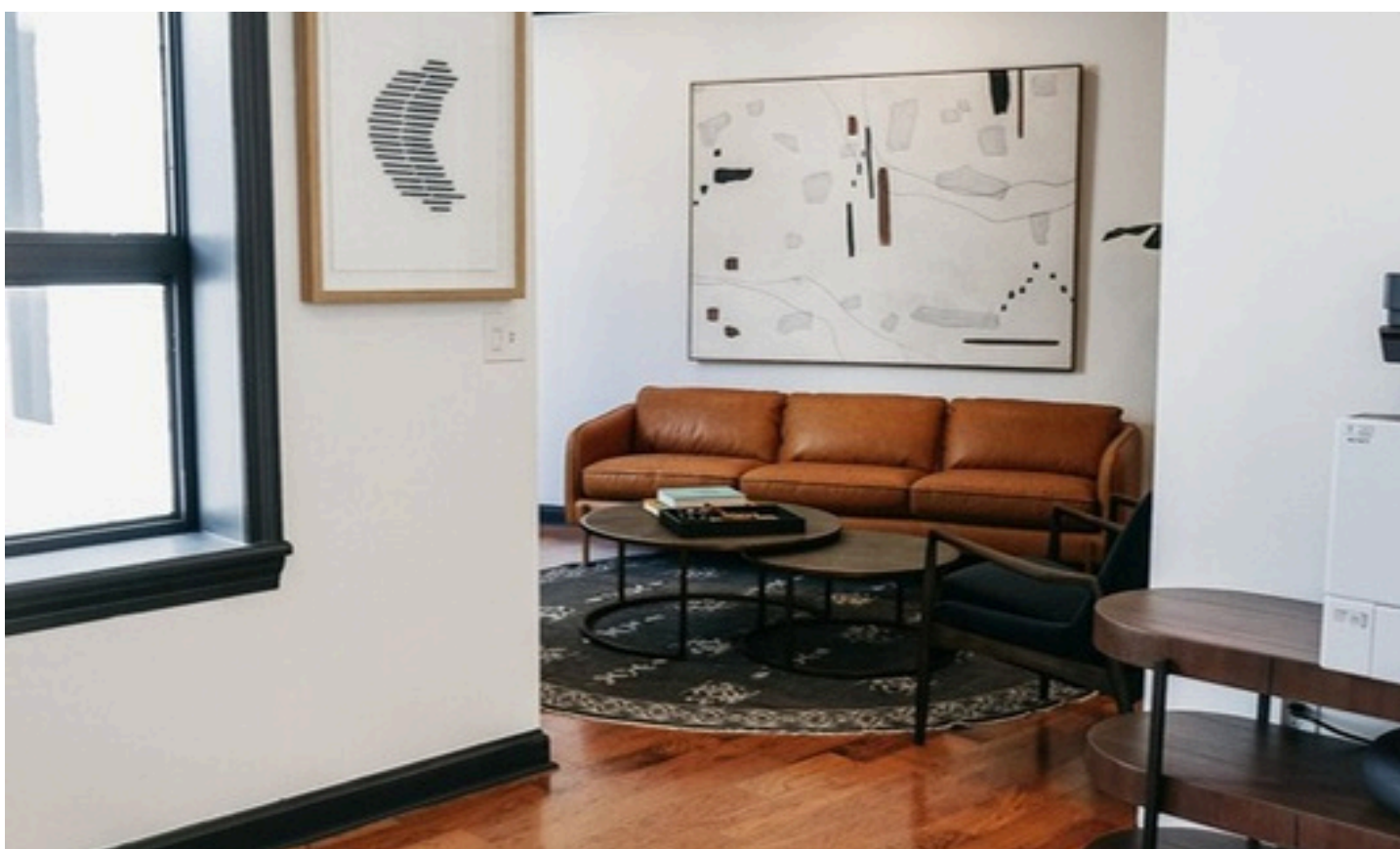


HYDE HOUSE ARCADE





THE PROPERTY

Hyde House Arcade, located at 442 W Kennedy Blvd, also known as the Lafayette Arcade Building, is a premier commercial real estate property in the heart of Tampa, Florida. This three-story mixed-use building offers a prime location at the apex of Kennedy Boulevard and Grand Central Avenue, directly across from the University of Tampa.

Hyde House Arcade features one available suite with multiple offices, ideal for businesses seeking a functional and flexible workspace. The available suite offers 2,938 square feet, providing ample space to accommodate a variety of needs.

After much anticipation, the building is nearing completion of renovations. This will allow access to both West Kennedy Boulevard and Grand Central Avenue.



KENNEDY GATE CLOSED AND SOUTH ELEVATION RENDERING



NORTH PERSPECTIVE DUSK RENDERING

THE PROPERTY

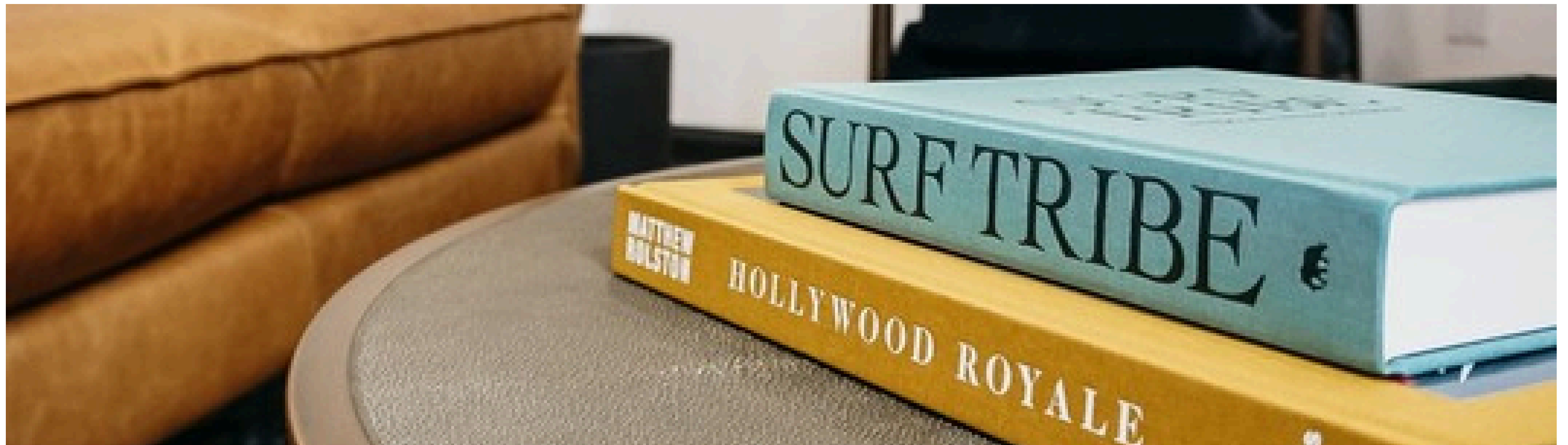
The building has a modern and elegant design, with large windows providing abundant natural light and stunning views of the surrounding area. The building is equipped with all the latest amenities, making it the ideal location for businesses looking to establish themselves in a thriving area.

Hyde House Arcade is conveniently located within walking distance of some of the city's best restaurants, cafes, and retail stores. Additionally, its close proximity to the University of Tampa, Downtown, Davis Islands, and Hyde Park Village.

Located in a mixed-use building situated at the intersection of Kennedy Boulevard and Grand Central Avenue, just across from the University of Tampa and close to downtown, Hyde House Arcade is perfectly at home in one of the most unique and recognizable buildings in the area. This prime location puts you in the heart of the action, with easy access to nearby restaurants, entertainment venues, and some of the best scenery in the city.



SOUTH ENTRY RENDERING



SUITE 340

A well-appointed suite that caters to the needs of businesses of all types and sizes. With nine private offices and two work desks, this suite is ideal for teams that require individual workspaces for their employees. The suite is bathed in natural light, creating a bright and inviting atmosphere that is conducive to productivity and collaboration.

The suite features a conference room that is fully equipped with all the necessary amenities, making it easy to host meetings and presentations with clients or colleagues. There is also a shared break room that provides a comfortable space to relax and recharge during the workday.

2,938 sq ft

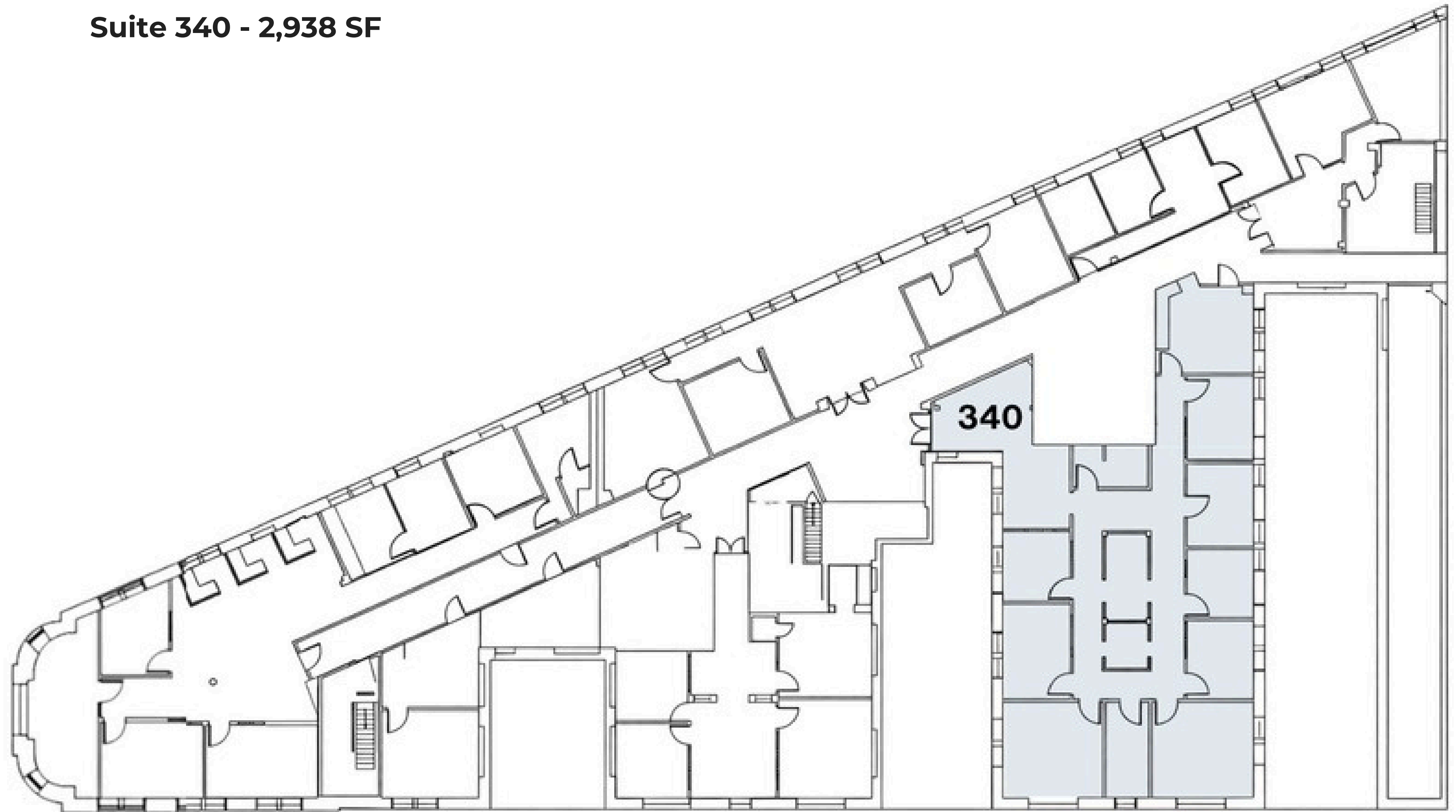


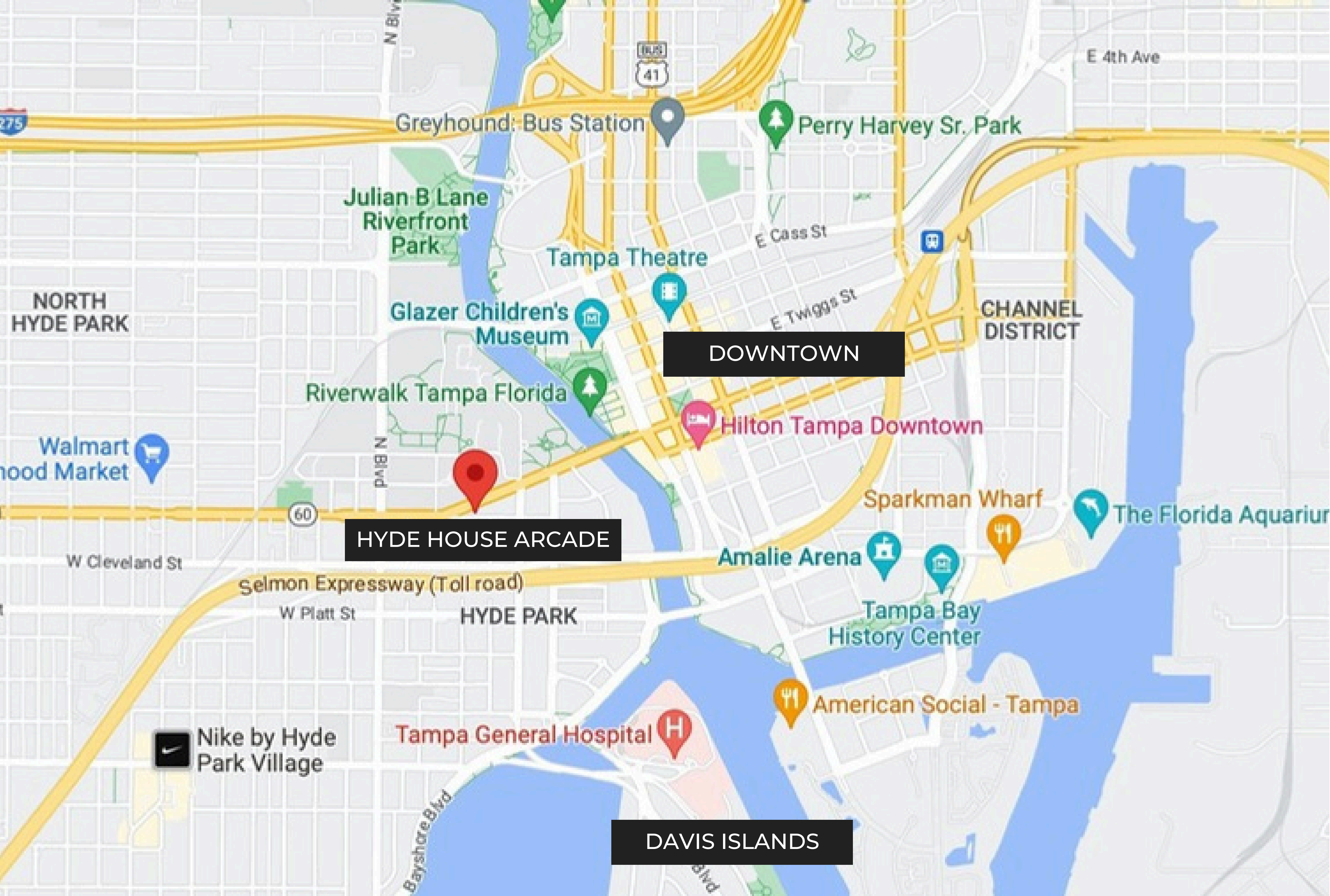




FLOOR PLAN

Suite 340 - 2,938 SF







COMMERCIAL LEASING INQUIRIES

DIRECTOR@GIANCOCOMPANIES.COM | 848.210.1195

442 W KENNEDY BLVD, TAMPA, FL 33606

YOUAREWHEREYOUWORK.COM