



GROUND FLOOR OFFICE/MEDICAL SPACE FOR LEASE IN WESTSHORE

4427 W Kennedy Blvd. Tampa, FL 33609

2,103 SF of premium, ground-floor space available to lease in a fully renovated South Tampa office building. Situated directly on Kennedy Blvd., this high-visibility building is ideal for medical practitioners or professional firms seeking a well-located address in the heart of the Westshore Business District. The suite offers five perimeter offices, a sizable conference room, and a break room with plumbing. The property features a large surface-level parking lot with a generous 3.2/1,000 SF parking ratio and a large pylon on Kennedy Blvd.

The building is highly accessible from Hillsborough, Pinellas and Pasco due to the close proximity of major transit routes like I-275, the Veterans Expressway, and Dale Mabry Hwy. Tampa International Airport is a five minute drive, and the property is surrounded by dozens of restaurants and retailers ranging from local fare on Kennedy Blvd to high end establishments at nearby International Plaza, MetWest, and Mid-town.

Come join an established tenant roster including BayCare, Fifth Third Bank, and Dunkin'. This is a rare opportunity to occupy a beautifully finished, move-in-ready space in one of Tampa's most sought-after corridors.

Availabilities		
Suite	Size	Use
Suite 100	2,103 SF	Office/Medical

Contacts

Clover Investment Properties

813-641-4261

clover-properties.com

Chad Keller

ckeller@clover-properties.com

Lyle Fogarty

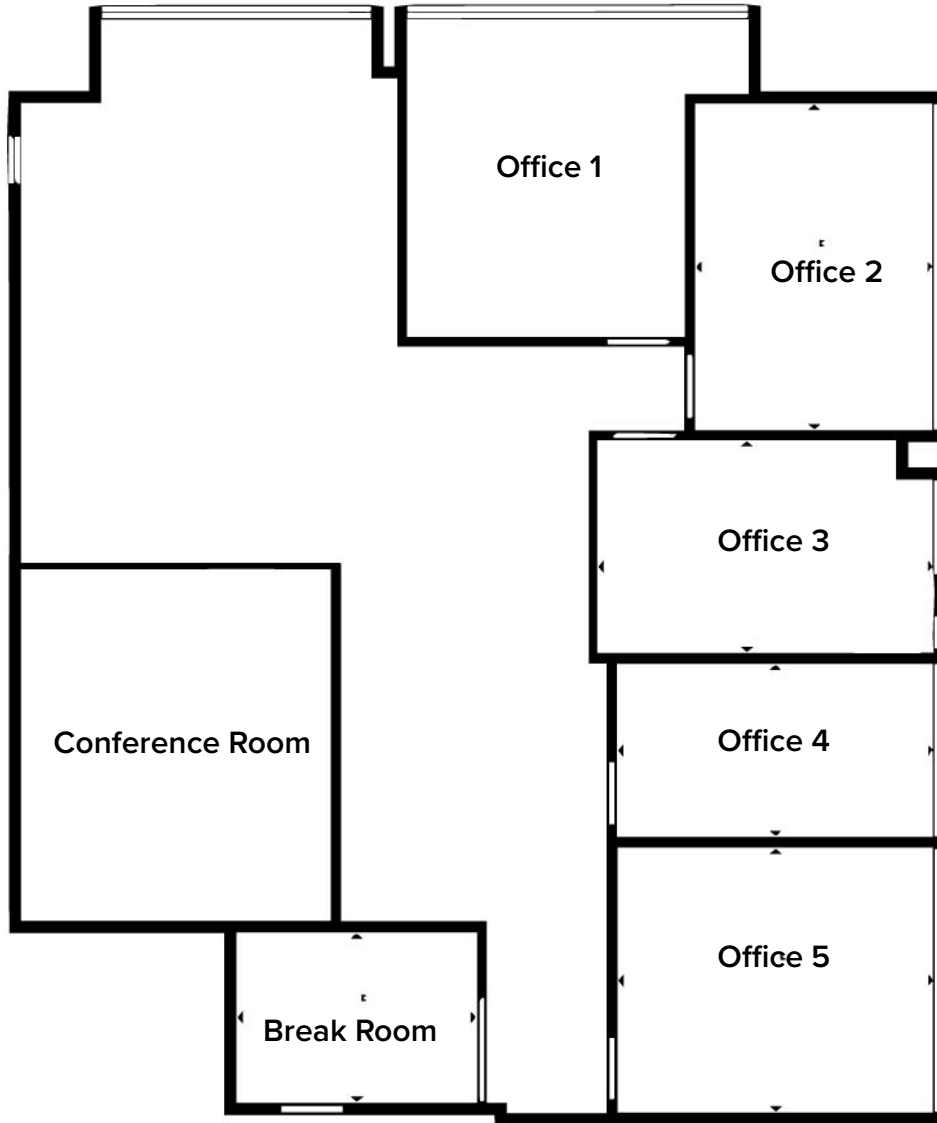
lfogarty@clover-properties.com

TAMPA OFFICE/MEDICAL OPPORTUNITY

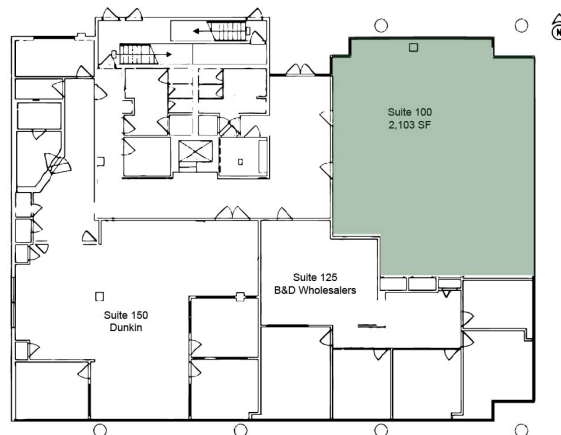
4427 W Kennedy Blvd, Tampa, FL 33609



Suite 100 - 2,103 SF

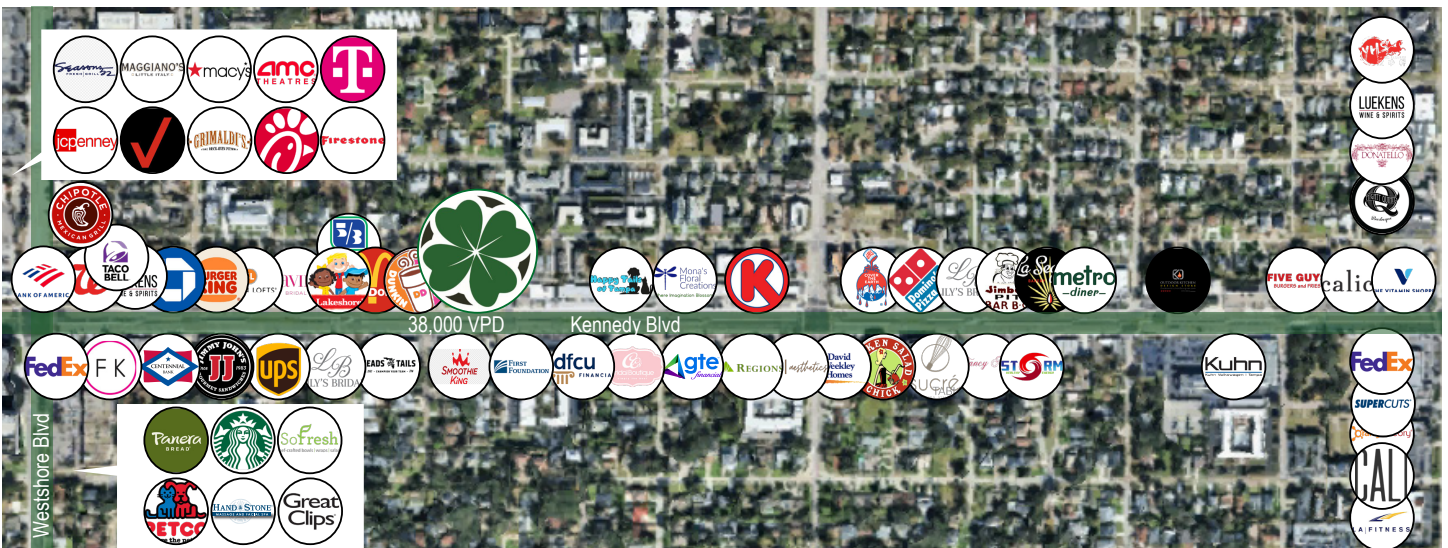


First Floor Layout



TAMPA OFFICE/MEDICAL OPPORTUNITY

4427 W Kennedy Blvd, Tampa, FL 33609



Contacts

Clover Investment Properties

813-641-4261

clover-properties.com

Chad Keller

ckeller@clover-properties.com

Lyle Fogarty

lfogarty@clover-properties.com