

CODES COMPLIANCE DATA:

- PLANS WERE PREPARED AND COMPLY WITH THE FOLLOWING:
- FLORIDA BUILDING 8TH EDITION (2023) BUILDING
 - FLORIDA FIRE PREVENTION CODE 8TH EDITION (2023) BASED ON NFPA 1 2021 EDITION.
 - CAPE CORAL CODE ORDINANCES, FLORIDA DEPARTMENT OF STATE ADMINISTRATIVE CODES, AND FLORIDA STATUTES

WIND DESIGN:

BASIC WIND SPEED 150 MPH
 WIND EXPOSURE CATEGORY B
 WIND IMPORTANCE FACTOR I

FENCE & GATE (BY OTHERS)

- TWO SOUTHERN GATES TO HAVE 16 FT CLEAR OPENING AND NORTH GATE TO HAVE 14' CLEAR OPENING
- OVERRIDE MECHANISM APPROVED BY THE LOCAL FIRE DEPARTMENT (EVAQ/ KNOX BOX, TYPICAL FOR ALL GATES)
- NO PART OF FENCE SHALL BE LOCATED FORWARD OF THE FORWARD MOST PART OF THE BUILDING FACE (TYPICAL)

DRILL & EPOXY #5 REBAR MINIMUM 4" EMBEDMENT AT 18" O.C. INTO EX. WALL

520 LF 6 FT HIGH WALL ALONG NORTH, EAST AND SOUTH OF PHASE 2 & 3 BOUNDARY. SEE CITY CAPE CORAL ORDINANCE 60-13 SECTION II.O.2) ENSURE WALL IS PLACED OUTSIDE OF EXISTING 20 FT DRAINAGE EASEMENT AND MIN. 2 FT CLEAR FROM EOP TO FACE OF WALL

PROPOSED ±125' BLOCK WALL REFER TO DETAIL

(2) 7' SWING GATES OPEN OUTWARD REFER TO DETAIL

PROPOSED CUSTOM ALUMINUM FENCE

MAINTAIN 2 FT MIN. FROM EOP TO FACE OF WALL (SEE SECTION A) WALL & FOOTERS MUST BE PLACED OUTSIDE OF DRAINAGE EASEMENT

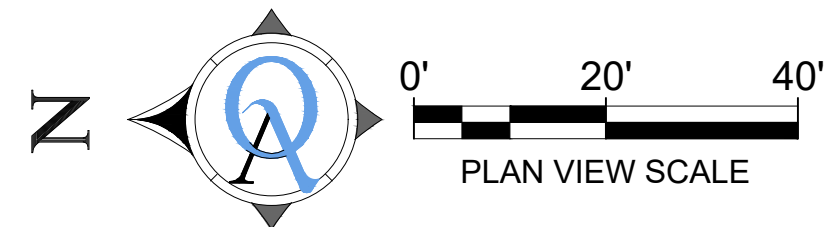
PROPOSED ±350' BLOCK WALL REFER TO DETAIL
 PROPOSED ±125' BLOCK WALL REFER TO DETAIL

BUILDING 2 (2 UNITS)
 ONE STORY
 F.F. EL. = 14.60 NGVD
 BLDG. HEIGHT = 23'±
 FOOTPRINT = 10,800 SF
 TYPE V-B CONSTRUCTION
 UN-SPRINKLED

(2) 8' SWING GATES OPEN INWARD REFER TO DETAIL

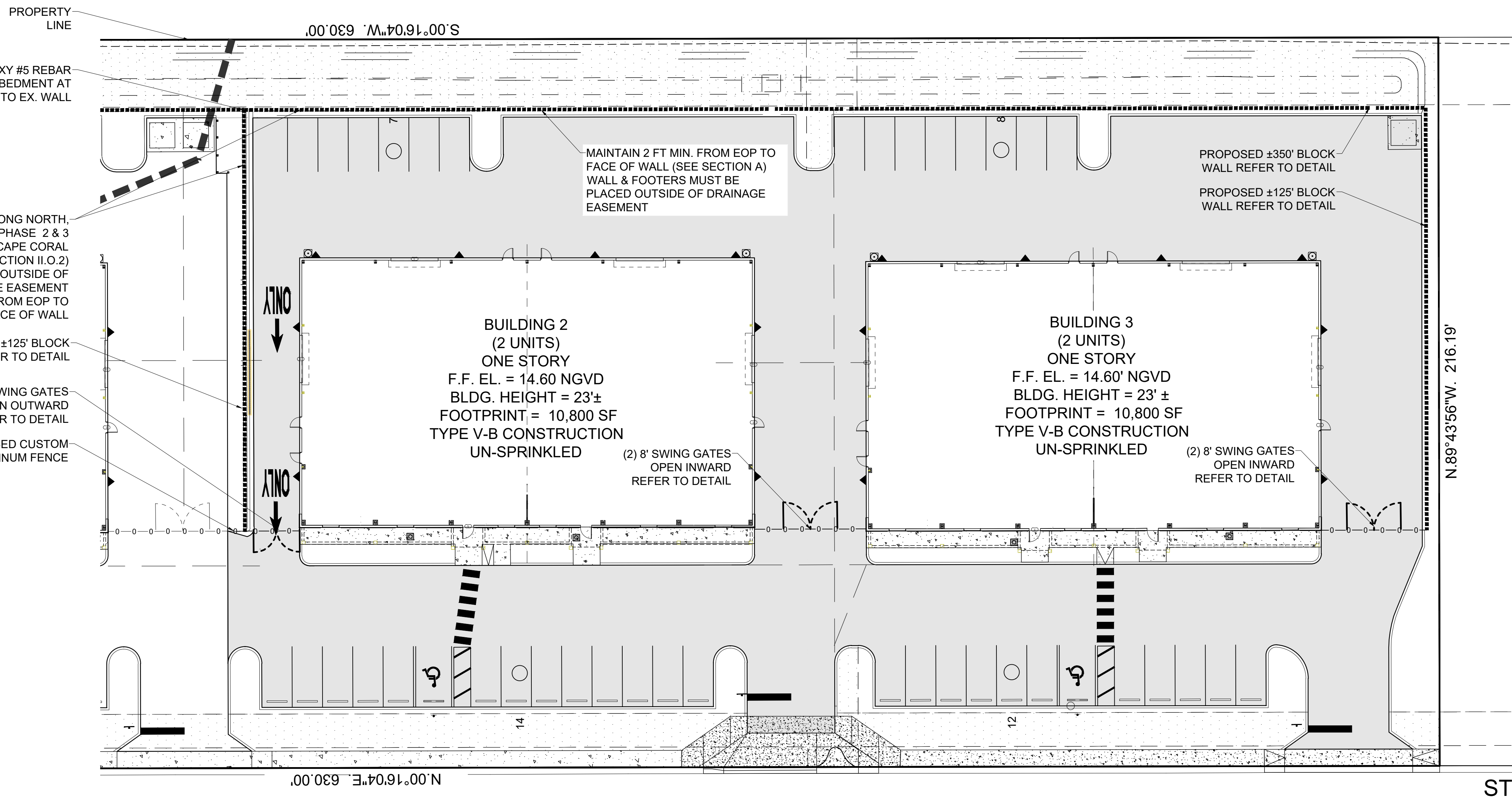
BUILDING 3 (2 UNITS)
 ONE STORY
 F.F. EL. = 14.60' NGVD
 BLDG. HEIGHT = 23' ±
 FOOTPRINT = 10,800 SF
 TYPE V-B CONSTRUCTION
 UN-SPRINKLED

(2) 8' SWING GATES OPEN INWARD REFER TO DETAIL



SITE PLAN LEGEND:

	PROPOSED PAVEMENT		CENTER LINE
	PROPOSED CONCRETE / WALKS		EXST FEATURES (ROADS, WALKS, ECT.)
	PROPOSED BUILDING LINE		RIGHT OF WAY
	PAINTED HANDICAP PARKING SYMBOL		SITE BOUNDARY
	PROPOSED STOP SIGN		TYPE 'D' CURB & PAVEMENT
	NUMBER OF PARKING SPACES IN ROW		PROJECT PHASE LINE
	SIGN AND POST		EASEMENTS
	DUMPSTER W/ ENCLOSURE		PROPOSED BLOCK WALL
			PROPOSED FENCE



DATE	COMMENT

SOUTHWINDS COMMERCE PARK LOTS 8-14
 GATE & WALL DETAIL
 677,681 & 685 STONECREST LANE
 CAPE CORAL, FLORIDA

Quattrone & Associates, Inc.
 Engineers, Planners, & Development Consultants
 4301 Veronical Shoemaker Blvd - Fort Myers, Florida 33916 - 239-936-5222
 Certificate of Authorization Number: 9445

ALFRED QUATTRONE, P.E.
 FL REG #52744
 SAVED BY: AI
 SAVED ON: 5/9/24

SHEET
 ST-01
 01 OF 01

P:\2019 Projects\190604 SOUTHERN ALUMINUM OFFICE\PROJ1-CADD FILES\01-CADD - VERSION D11180604_2024 GATE DETAIL