

**OFFICE, MEDICAL
& RETAIL POSSIBLE**

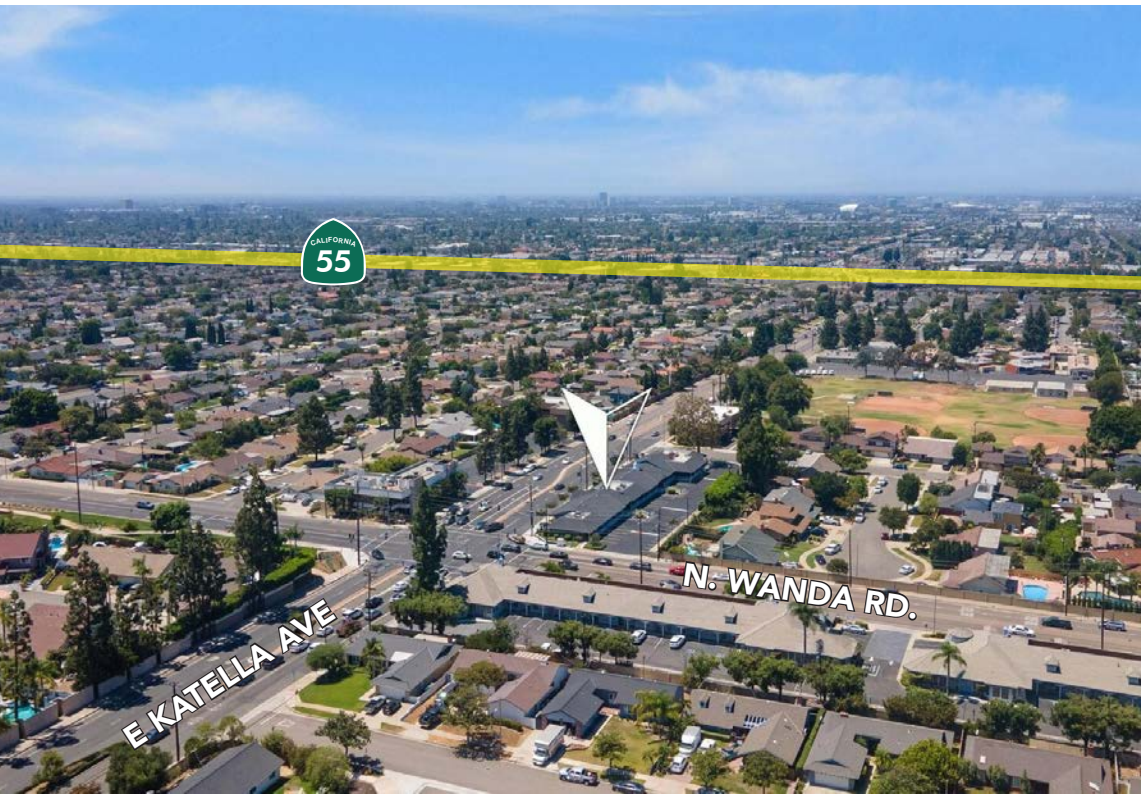
2901

E KATELLA AVE, UNIT C, ORANGE

±1,193 SF MEDICAL OFFICE FOR LEASE

PROPERTY FEATURES

- ±1,193 SF Medical Suite
- Open to All Retail Type Uses
- Free Convenient Parking in Front of Suites
- High Visibility Location
- Close Proximity to the 55 Freeway
- Great For Dental, Physical Therapists, General Practice, General Office and Retail Uses
- **LEASE RATE: \$2.95 NNN (NETS \$0.85 PSF)**



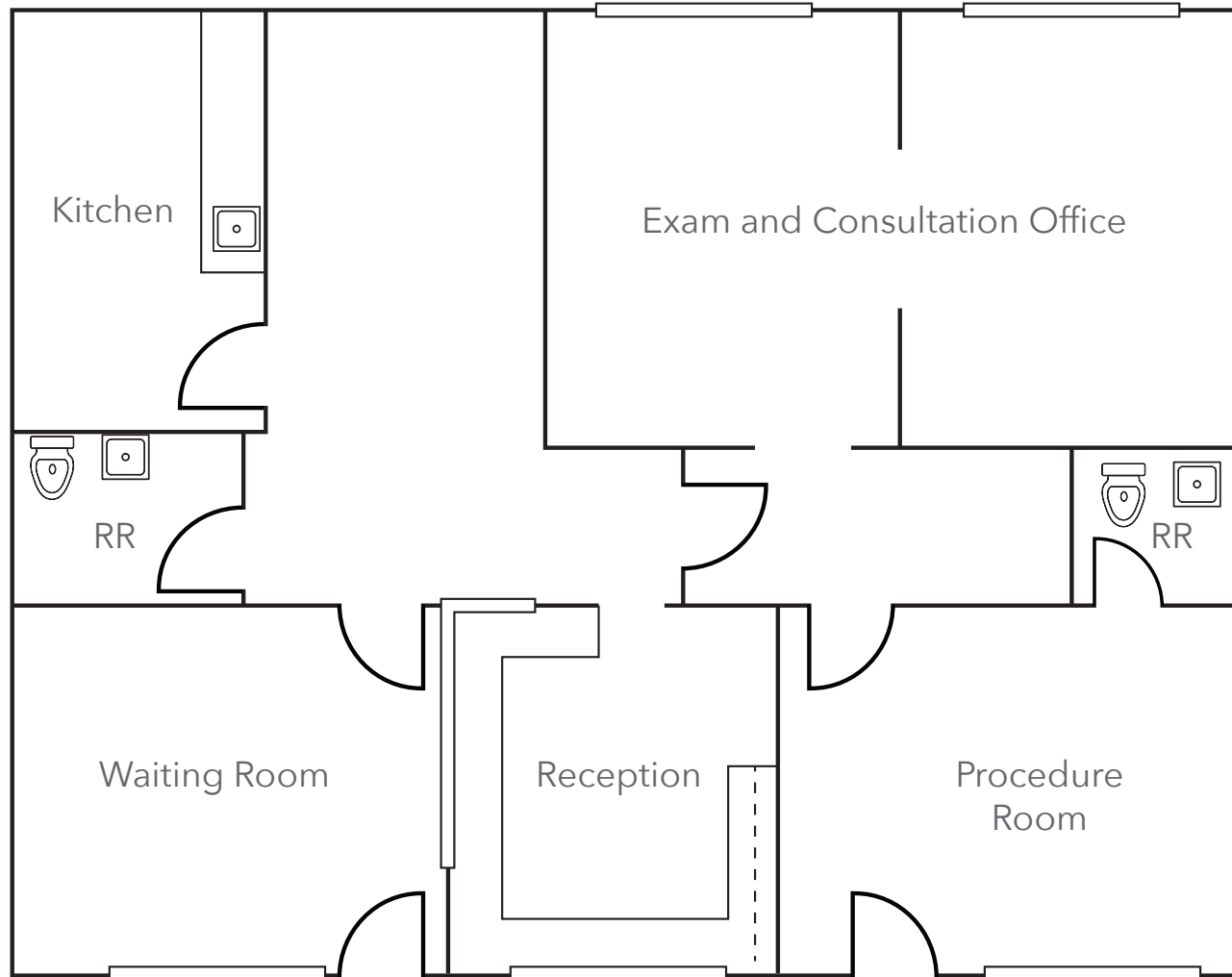
ALLEN BASSO
Senior Vice President
Lic. #01298152
949.790.3130
abasso@leeirvine.com



ERIC DARNELL
Senior Vice President
Lic. #01888743
949.460.3681
edarnell@leeirvine.com

FLOOR PLAN

UNIT C: ±1,193 SF



HYPOTHETICAL FLOOR PLAN

UNIT C: ±1,193 SF

