

**4103 New Court Ave  
Syracuse, New York 13206**

**FOR LEASE – 6,500 SF**



**Property Details**

**Two Drive in Doors  
Large Rear & Side Yards  
Building in like New Condition  
Clean Interior Flex Space  
First Class Location**

**Single-tenant  
warehouse building**

**315-663-2100**



**COR**

CNY BROKERAGE COMPANY, LLC

COR CNY BROKERAGE, LLC . 542 TOWNE DRIVE . FAYETTEVILLE, NY 13066

**Kerry Mannion, SIOR**  
Licensed Real Estate Broker  
[kmannion@corcompanies.com](mailto:kmannion@corcompanies.com)



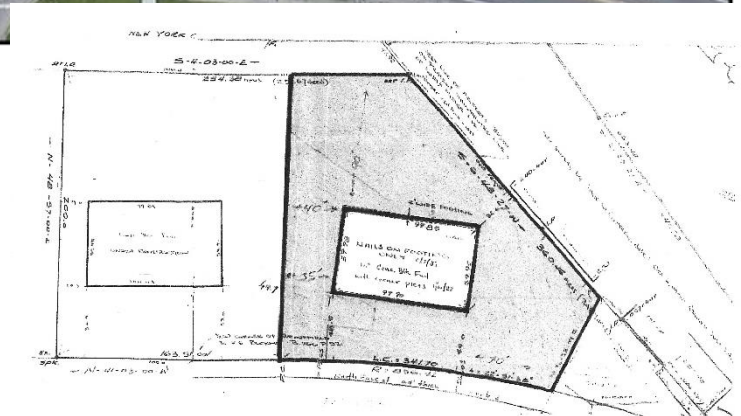
**SIOR®**

Although the information furnished regarding property for sale, rental or financing is from sources deemed reliable, such information has not been verified, and no express representation is made nor is any to be implied as to the accuracy thereof. It is submitted subject to errors, omissions, change of price, rental or other conditions, prior sale, lease or financing, or withdrawal without notice.



**4103 New Court Ave  
Syracuse, New York 13206**

**FOR LEASE – 6,500 SF**



**COR**

CNY BROKERAGE COMPANY, LLC

**COR CNY BROKERAGE, LLC . 542 TOWNE DRIVE . FAYETTEVILLE, NY 13066**

**Kerry Mannion, SIOR**  
Licensed Real Estate Broker

[kmannion@corcompanies.com](mailto:kmannion@corcompanies.com)



**SIOR®**

Although the information furnished regarding property for sale, rental or financing is from sources deemed reliable, such information has not been verified, and no express representation is made nor is any to be implied as to the accuracy thereof. It is submitted subject to errors, omissions, change of price, rental or other conditions, prior sale, lease or financing, or withdrawal without notice.