

## HIGH-END CREATIVE OFFICE

100 E. MacArthur Blvd.  
Santa Ana, CA 92707

### OVERVIEW

PREMISES:	1 <sup>st</sup> Floor
SQUARE FOOTAGE:	Approx. 2,500
AVAILABLE:	July 1, 2026
LEASE RATE:	Negotiable

### FEATURES:

- Fully furnished with sit/stand desks
- Nine (9) private offices
- Large conference room, co-working table, two (2) printers, and three (3) security cameras
- Part of a mixed-use project

### CONTACT



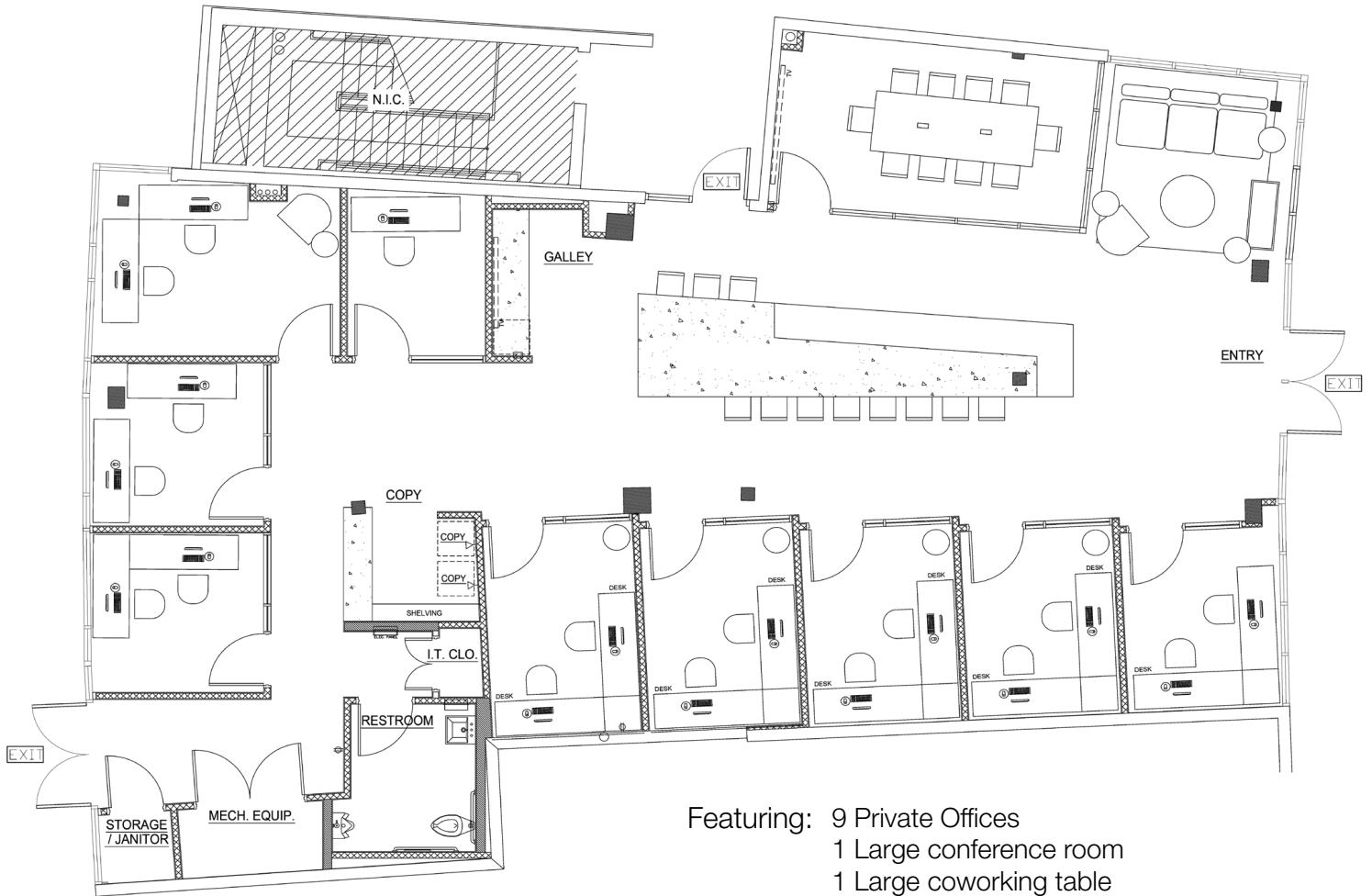
**JP ROACH**  
949.462.4106 direct  
jproach@cresa.com  
DRE#: 01902837



### On-Site Amenities

- Resort-Style Swimming Pool
- Entertainment and Lounge Areas
- Proactive Sports Performance
- Clubhouse & Fitness Center
- Bowling Lanes, Billiards & Shuffleboard
- Barbecues with Picnic Area
- Outdoor theater

100 E. MacArthur Blvd  
Santa Ana, California 92707



Featuring: 9 Private Offices  
1 Large conference room  
1 Large coworking table  
3 security cameras

FOR  
LEASE

1<sup>st</sup> Floor:  
Approx. 2,500 SF

High-End Creative Office Space

CONTACT

JP ROACH  
949.462.4106 direct  
jproach@cresa.com  
DRE#: 01902837

100 E. MacArthur Blvd  
Santa Ana, California 92707



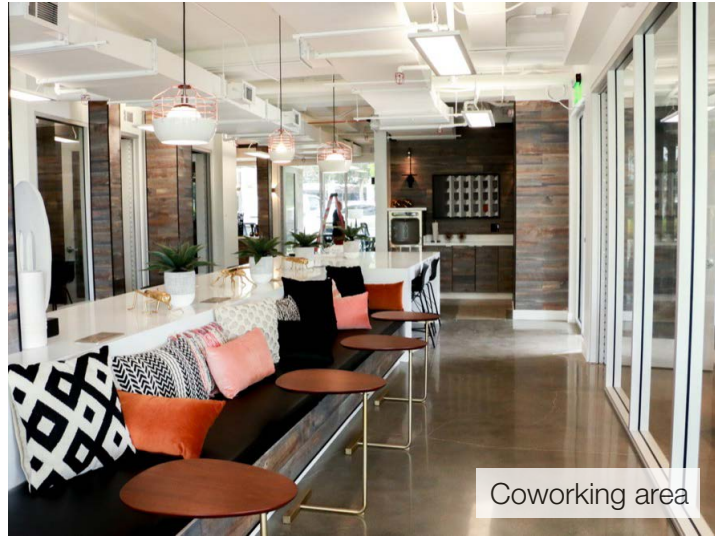
Large coworking table



Window-lined offices



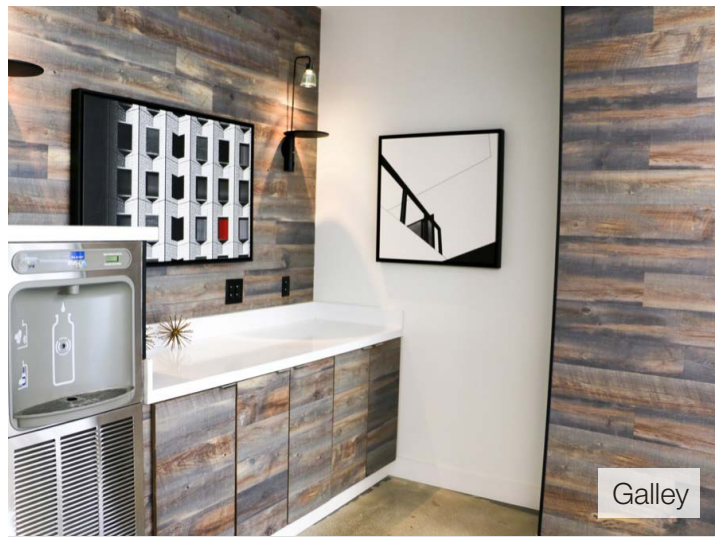
Large conference room



Coworking area



Copy room



Galley

# THE MARKE

Santa Ana, California 92707



## ON-SITE SHARED AMENITIES

