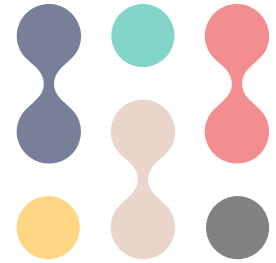
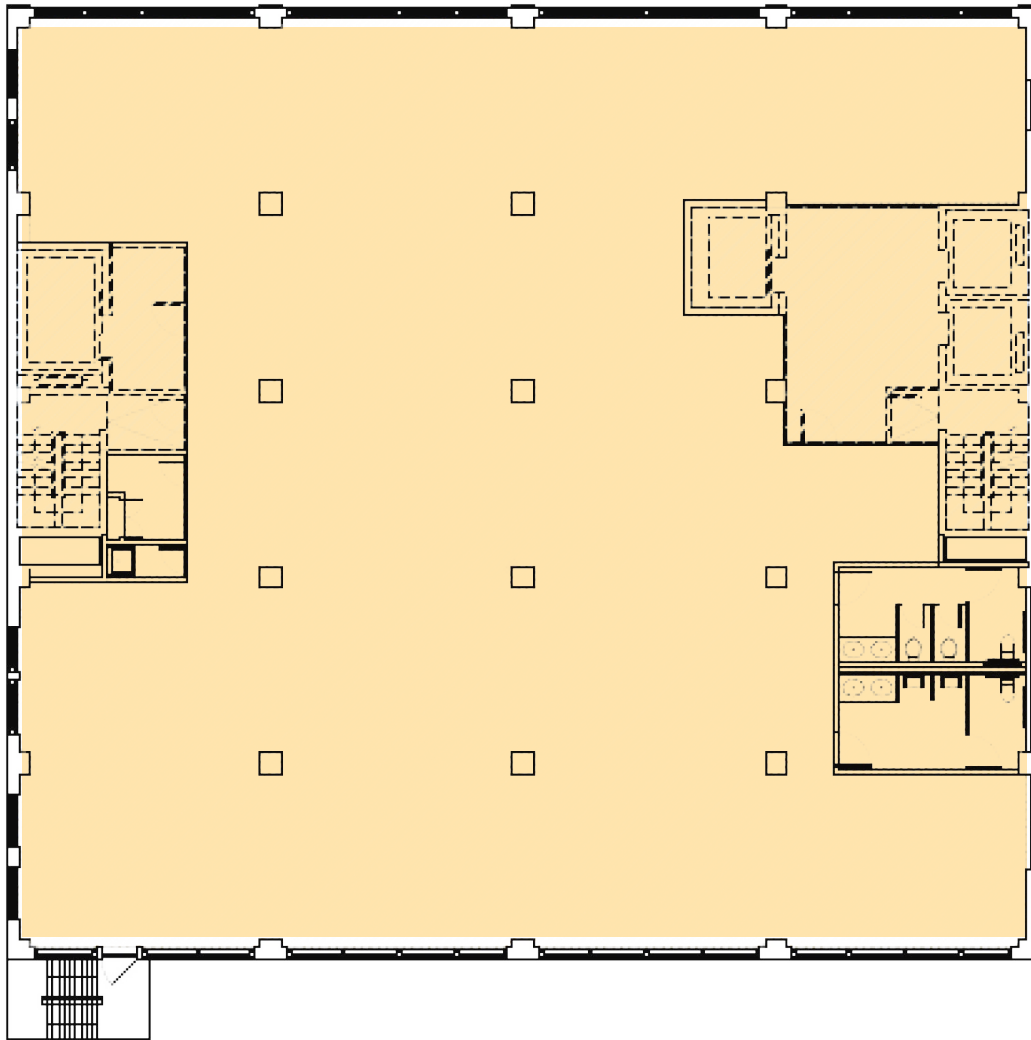


220 W 19 Street Chelsea | NYC



Entire 10th Floor (divisible) - 9,308 RSF



For more information, please contact exclusive leasing agents:

Patrick Steffens | Senior Director | 212 729 7945 | patrick.steffens@avisonyoung.com

Thomas Usher | Associate | 212 729 3974 | thomas.usher@avisonyoung.com

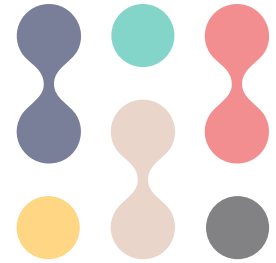
Joel Wechsler | Senior Director | 212 729 1906 | joel.wechsler@avisonyoung.com

Michael Gottlieb | Principal | 212 729 6809 | michael.gottlieb@avisonyoung.com

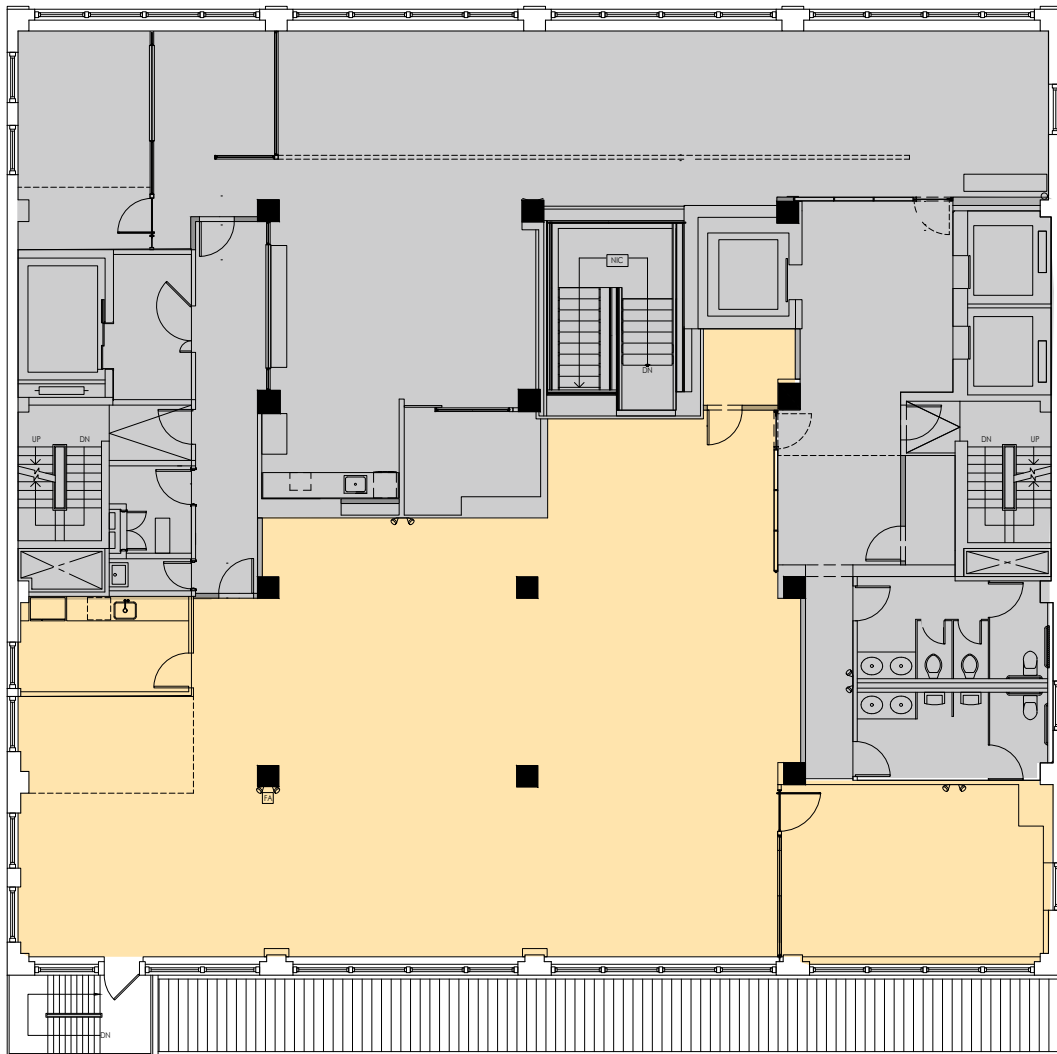
Avison Young | 530 5th Avenue, Floor 4 | New York, NY 10036 | T. 212 729 7140 | F 917 591 9300 | avisonyoung.com

© 2026. Avison Young. Information contained herein was obtained from sources deemed reliable and, while thought to be correct, have not been verified. Avison Young does not guarantee the accuracy or completeness of the information presented, nor assumes any responsibility or liability for any errors or omissions therein. Some imagery may have been edited using AI tools for visualization purposes.

**AVISON
YOUNG**



Partial 11th Floor - 5,481 RSF



For more information, please contact exclusive leasing agents:

Patrick Steffens | Senior Director | 212 729 7945 | patrick.steffens@avisonyoung.com

Thomas Usher | Associate | 212 729 3974 | thomas.usher@avisonyoung.com

Joel Wechsler | Senior Director | 212 729 1906 | joel.wechsler@avisonyoung.com

Michael Gottlieb | Principal | 212 729 6809 | michael.gottlieb@avisonyoung.com

Avison Young | 530 5th Avenue, Floor 4 | New York, NY 10036 | T. 212 729 7140 | F 917 591 9300 | avisonyoung.com

© 2026. Avison Young. Information contained herein was obtained from sources deemed reliable and, while thought to be correct, have not been verified. Avison Young does not guarantee the accuracy or completeness of the information presented, nor assumes any responsibility or liability for any errors or omissions therein. Some imagery may have been edited using AI tools for visualization purposes.