

**OPEN PLAN  
LIFESTYLE  
OFFICE  
AVAILABLE IN  
HISTORICAL  
ALTRINCHAM  
BUILDING**



# THE COURT HOUSE

An opportunity has arisen to rent an open plan office space in the heart of the historical market town of Altrincham. The Court House boasts a newly refurbished 2,000 sq ft first floor suite, the building has seen the addition of meeting room, bike storage, shower and changing facilities and a stunning rooftop garden with fantastic views across the town.



METROLINK



TRAIN STATION



CLOSE TO MOTORWAY



CLOSE TO AIRPORT



NEWLY REFURBISHED



LIFT



PRIVATE KITCHEN



LED LIGHTING



ROOFTOP GARDEN

## Terms

### RENT

On application

### SERVICE CHARGE

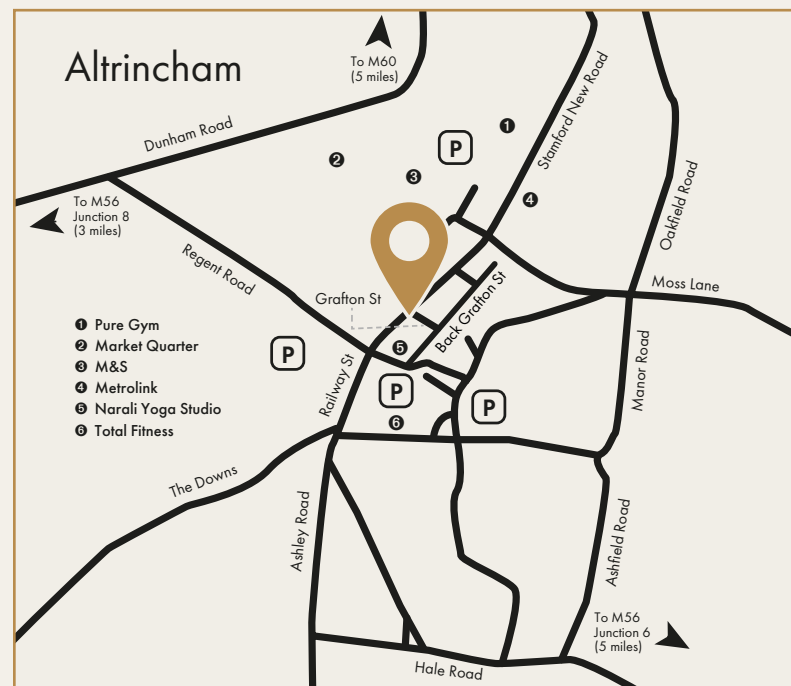
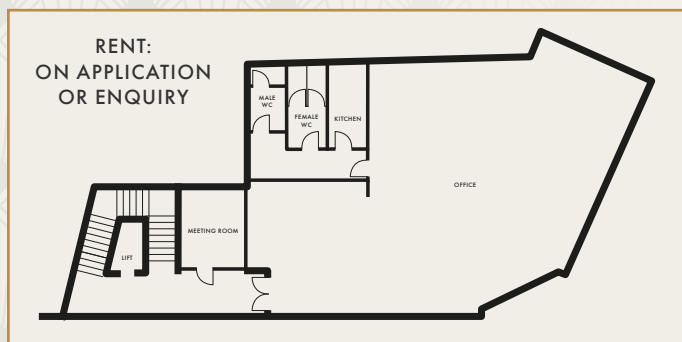
A service charge is levied to cover the running of common areas of the building

### LEASE

A new lease drawn of FRI terms is available

### VAT

The building is elected for VAT



## All enquiries

For more information please contact:

Daniel Lee

daniel@r-p-s.co.uk

0161 927 4902

07502 304 082



## Important notice

Regional Property Solutions, their clients and any joint agents give notice that: 1. They are not authorised to make or give any representations or warranties in relation to the property either here or elsewhere, either on their own behalf or on behalf of their client or otherwise. They assume no responsibility for any statement that may be made in these particulars. These particulars do not form part of any offer or contract and must not be relied upon as statements or representations of fact. 2. Any areas, measurements or distance are approximate. The text, photographs and plans are for guidance only and are not necessarily comprehensive. It should not be assumed that the property has all necessary planning, building regulation or other consents and RPS have not tested any services, equipment or facilities. Purchasers must satisfy themselves by inspection or otherwise. April 2019.

Regional Property Solutions. Grosvenor House, 22 Grafton Street, Altrincham, Cheshire WA14 1DU.