

office space  
for  
**LEASE**

**MULTIPLE  
SUITES**

**FLORIDA MALL BUSINESS CENTRE**

1,952 rsf to 2,114 rsf

**3rd floor - \$24/sf FS\***

- suite 310 2,114 rsf
- suite 365 1,952 rsf

- + Bulding: 85,053 SF
- + Stories: 3
- + Year Built: 1987
- + Parking: 4/ 1,000
- + Signage: Marquee



1650 Sand Lake Road  
Orlando, Florida 32809

patrick goetz  
vice president  
(407) 734.7210  
pat@BBDRE.com



**Bishop Beale Duncan**  
COMMERCIAL REAL ESTATE



**THE FLORIDA MALL®**  
A SIMON MALL

the property



sand lake rd

orange blossom trl



## highlights

Located on the  
hard corner of  
Orange Blossom  
Trail and Sand  
Lake Rd

- Tenant-Only Parking Deck with Secure Access
- Central South Orlando Location:
  - 2 miles from Florida Highway 528
  - 2 Miles from the Florida Turnpike
  - 5 miles from Interstate 4
  - 7 miles from the Orlando International Airport



250 N. Orange Ave., Ste. 1500  
Orlando, FL 32801  
+ (407) 426.7702  
[www.BBDRE.com](http://www.BBDRE.com)

This offer is subject to errors, omissions, prior sale or withdrawal without notice.



for more information, contact patrick goetz vice president (407) 734.7210 [pat@BBDRE.com](mailto:pat@BBDRE.com)

# building elevation

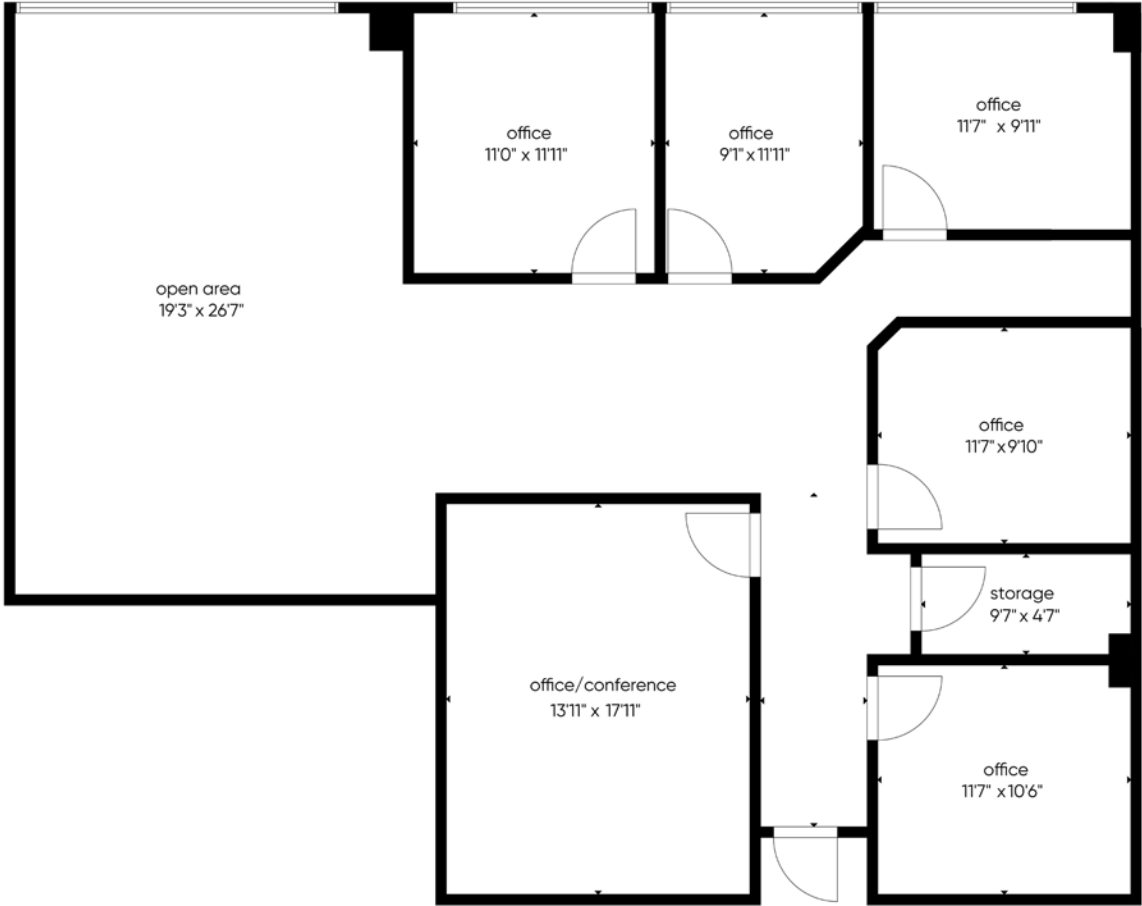


exterior



for more information, contact patrick goetz vice president (407) 734.7210 pat@BBDRE.com

# Suite 310 | 2,114 rentable sf



### space features:

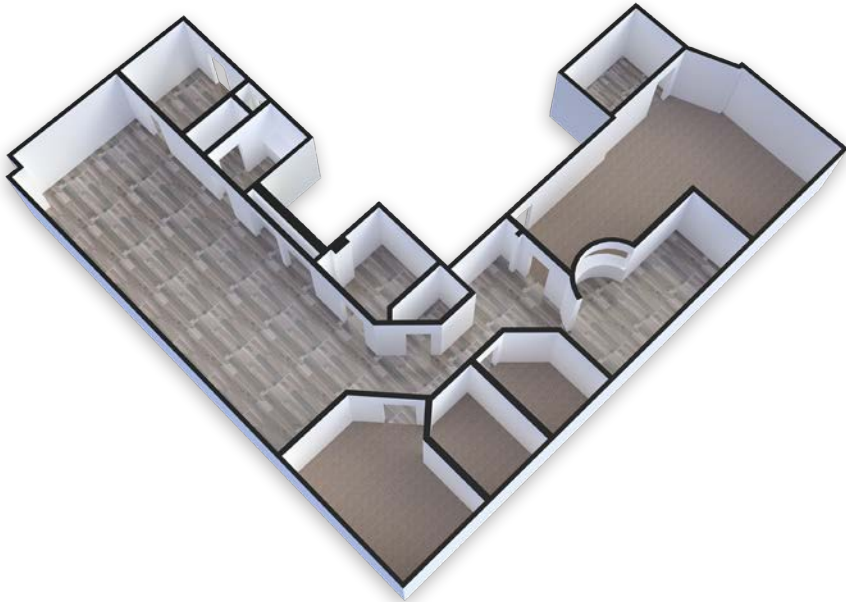
- Large open area
- 5 private offices
- Large conference room



space details

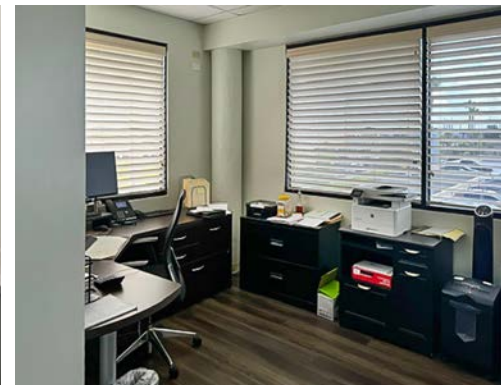
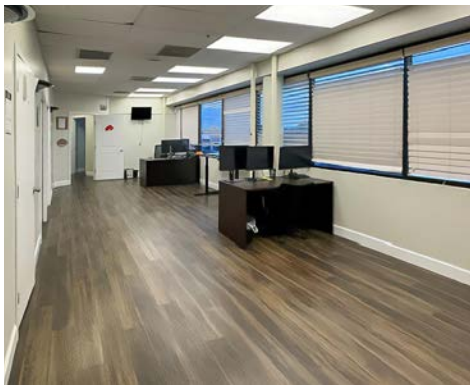
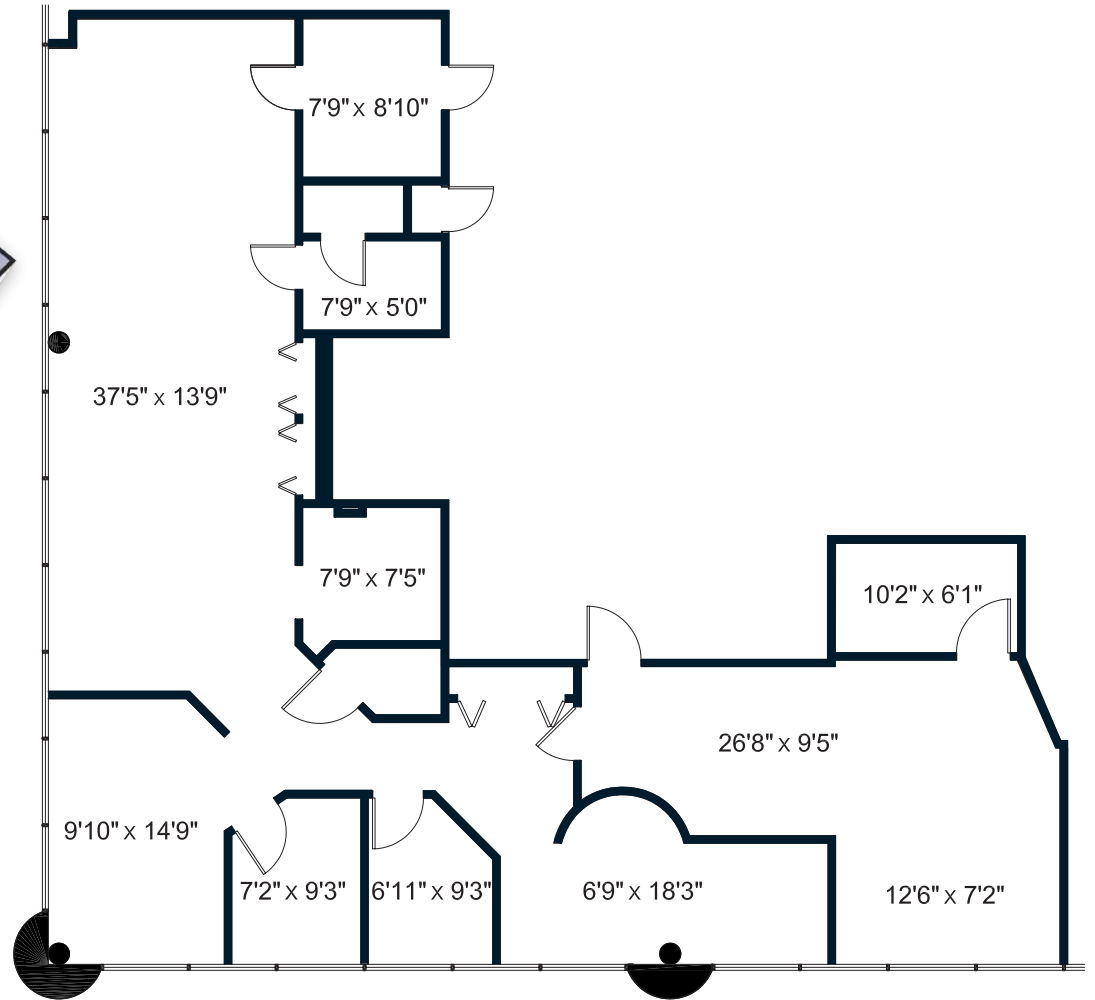


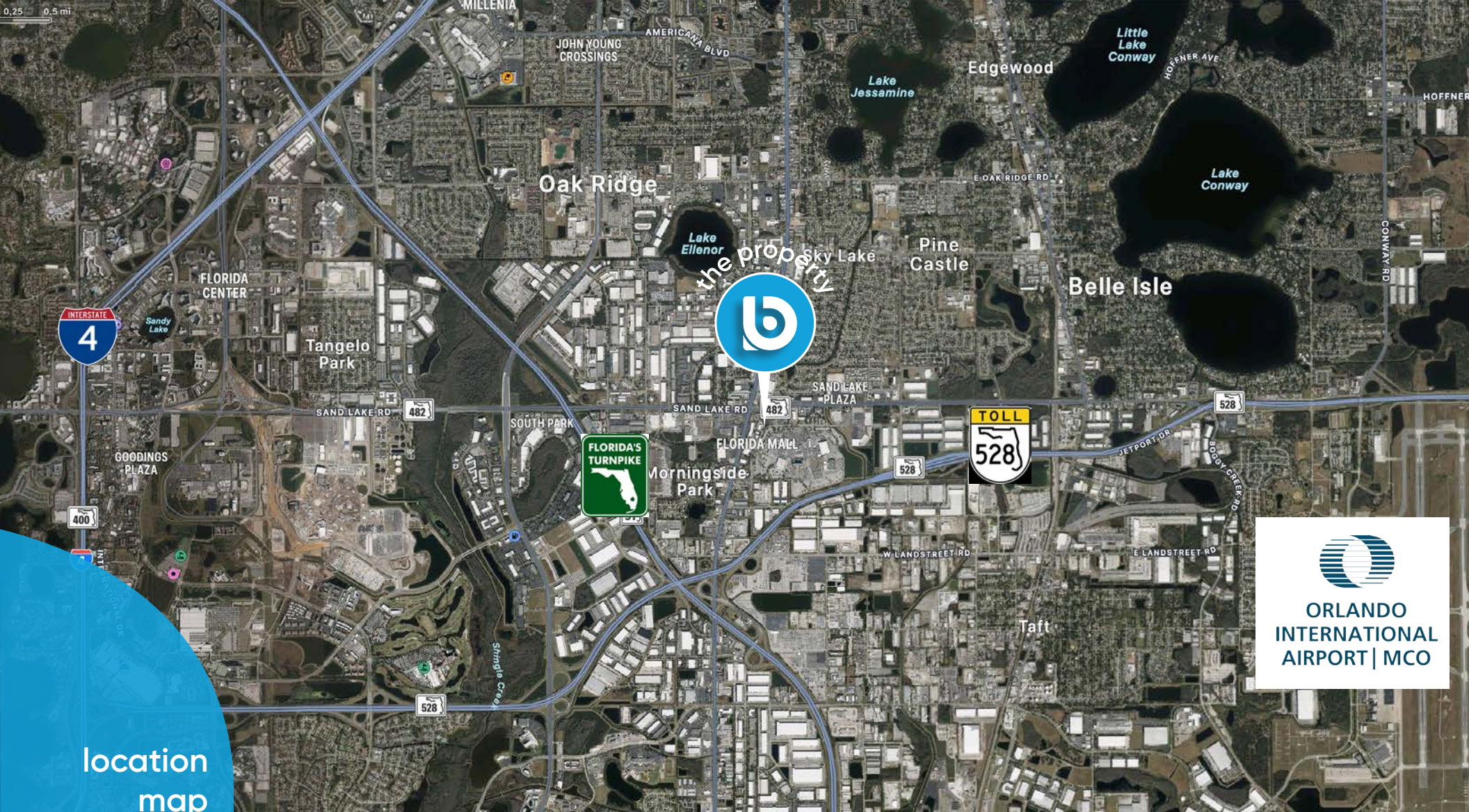
# Suite 365 | 1,952 rentable sf



## space features:

- Large open space
- reception/waiting
- Kitchenette
- 7 private offices





location  
map

demographics

| Radius | Population | HH Income | Businesses | Employees |
|--------|------------|-----------|------------|-----------|
| 1-Mile | 5,679      | \$65,925  | 1,217      | 16,022    |
| 2-Mile | 22,686     | \$60,287  | 3,630      | 40,459    |
| 3-Mile | 70,900     | \$62,232  | 6,315      | 67,455    |



for more information, contact patrick goetz vice president (407) 734.7210 pat@BBDRE.com