

Compton

For Rent
**22-24 Cowper Street
Shoreditch EC2**



Exceptional, newly refurbished
Grade A office space in the heart of
Shoreditch

For Rent

22-24 Cowper Street
Shoreditch EC2A

Size

1,615 - 5,241 Ft²

Rent

£52.50 - £72.50 per sq ft

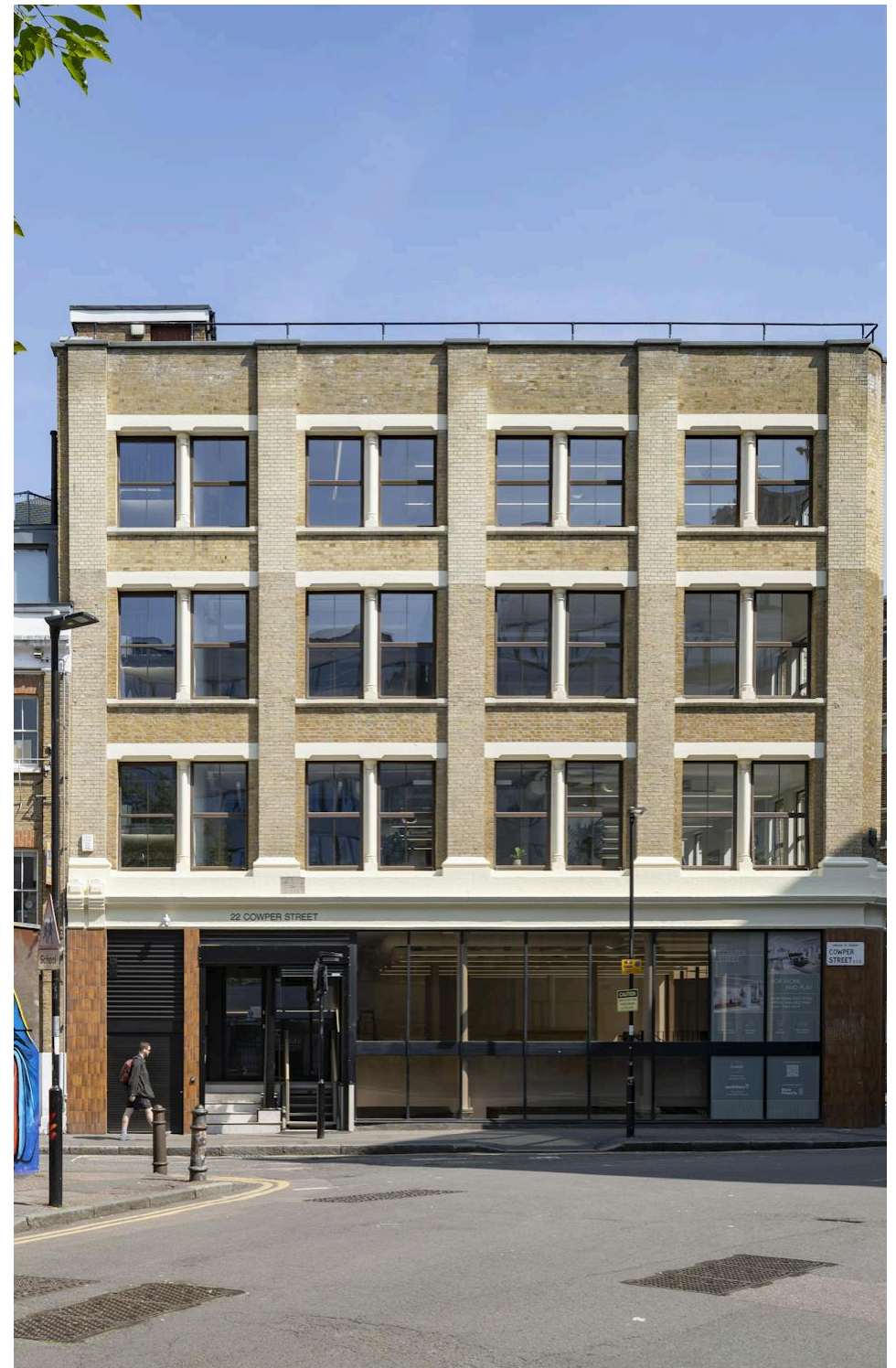
Fitout

Fitted. Both CAT A+ or CAT A
floors

Description

22 Cowper Street has undergone a comprehensive refurbishment and offers premium Grade A office space in the heart of Shoreditch. The building offers CAT A and fully fitted office space on traditional or fully managed lease terms.

A blend of contemporary style and high-quality finishes creating an inspiring new workplace. The comprehensive refurbishment features a new reception and best-in-class end-of-trip facilities.



For Rent

22-24 Cowper Street
Shoreditch EC2A

[Click to Play](#)



For Rent

22-24 Cowper Street
Shoreditch EC2A

[Click to Play](#)



For Rent

22-24 Cowper Street
Shoreditch EC2A

Meeting Room

Size

1,615 - 5,241 Ft²

Rent

£52.50 - £72.50 per sq ft

Fitout

Fitted. Both CAT A+ or CAT A
floors

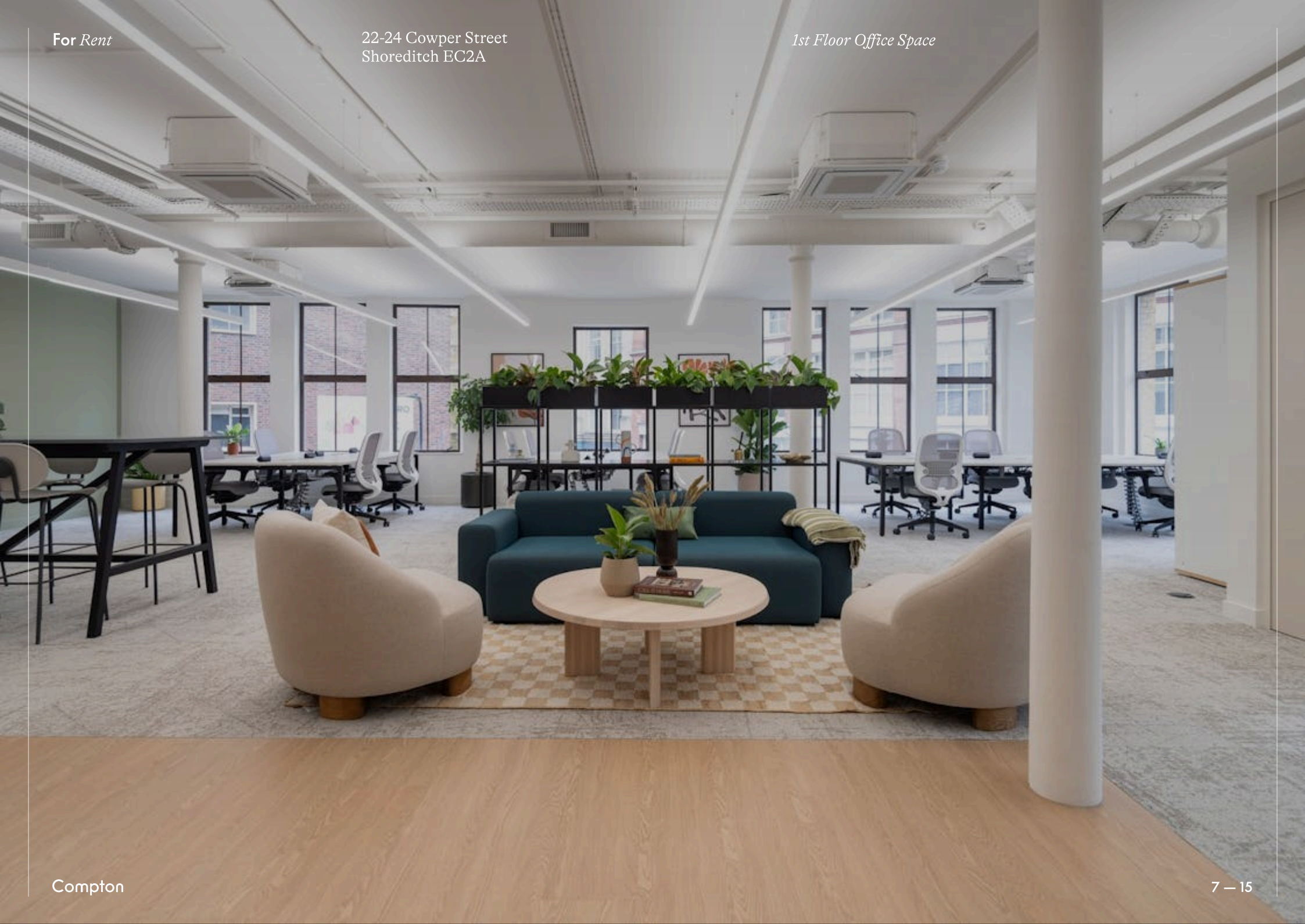


Compton

For Rent

22-24 Cowper Street
Shoreditch EC2A

1st Floor Office Space



For Rent

22-24 Cowper Street
Shoreditch EC2A

1st Floor Office Space



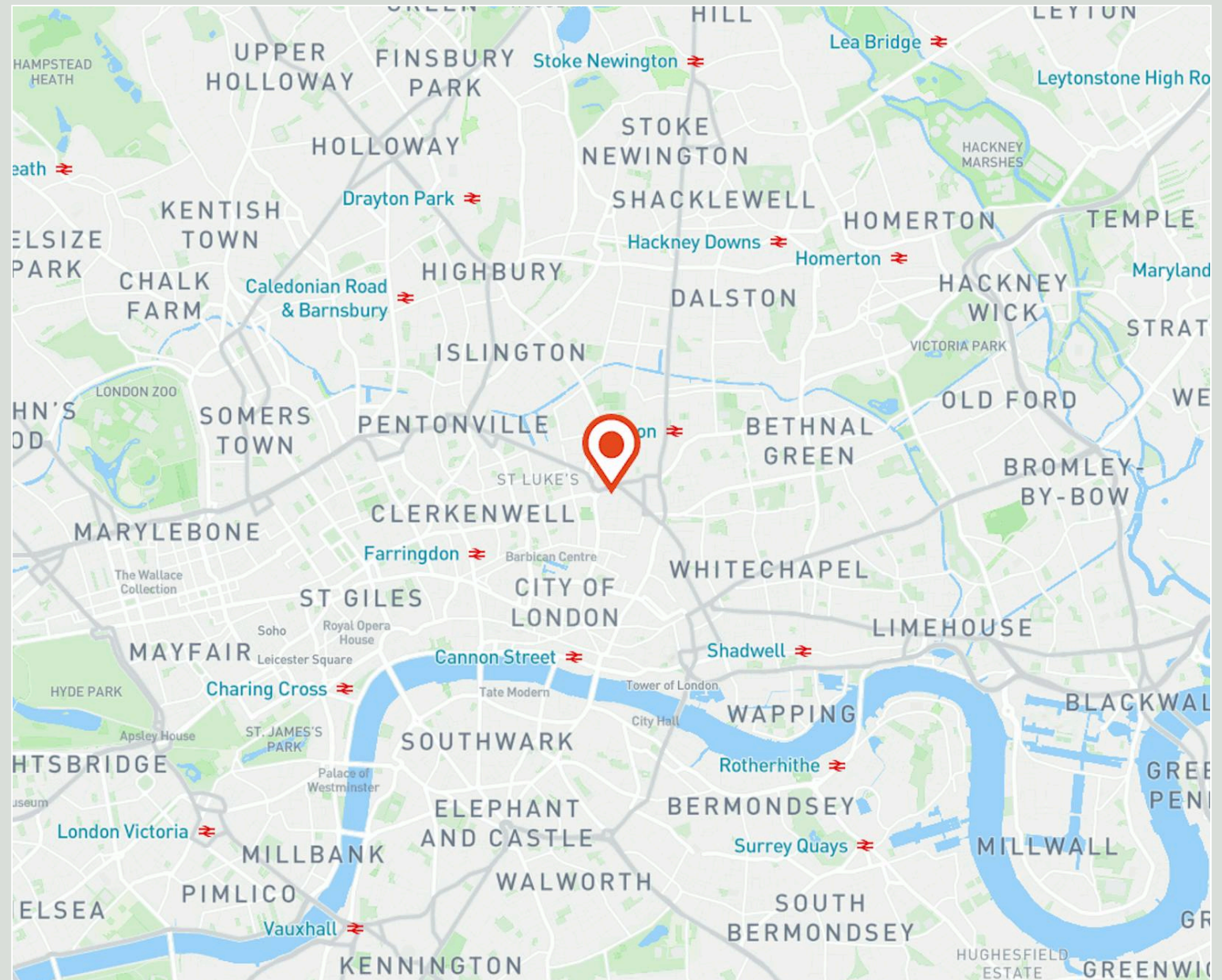
1st Floor Office Space

For Rent

22-24 Cowper Street
Shoreditch EC2A

Location

Perfectly located for easy access to the City's transport network, just a one-minute walk from Old Street Station. The convenient location attracts global companies including tech giants, advertising and creative agencies, and more making for a bustling business destination.



Compton

For Rent

22-24 Cowper Street
Shoreditch EC2A

1st Floor Office Space

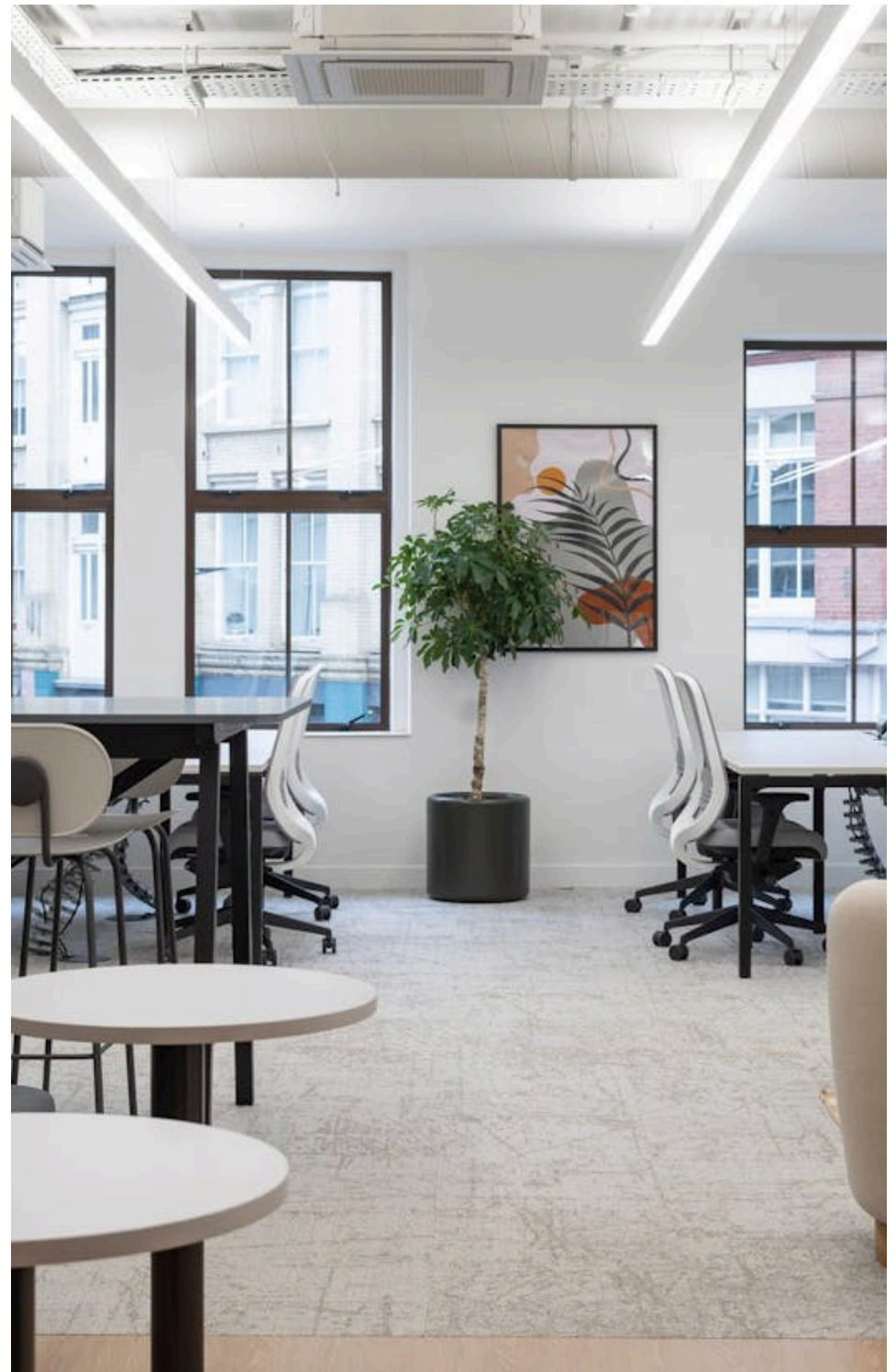


For Rent

22-24 Cowper Street
Shoreditch EC2A

Amenities

- Brand newly refurbished
- Reimagined entrance
- CAT A & fully fitted options available
- Managed options available
- Fibre enabled
- Excellent natural daylight
- Demised WC's
- Towel service
- Showers
- Bicycle storage
- Pet friendly
- EPC A

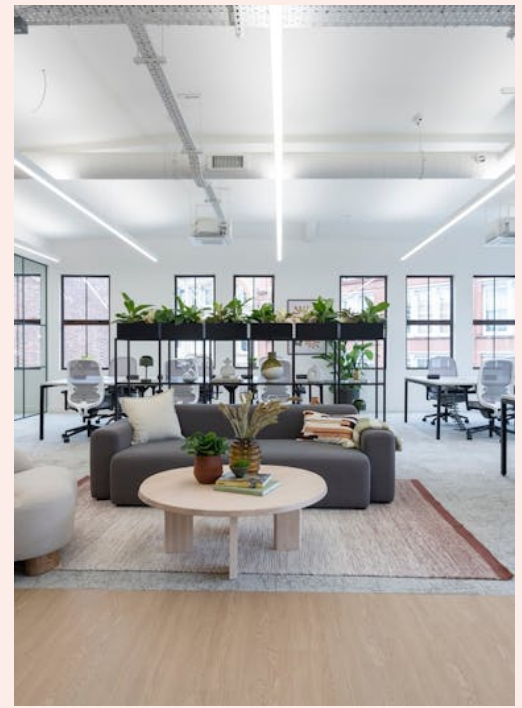


Compton

For Rent

22-24 Cowper Street
Shoreditch EC2A

3rd Floor Office Space



3rd Floor Office Space

For Rent

22-24 Cowper Street
Shoreditch EC2A

Availability

Name	Sq Ft	Rent (Sq Ft)	Rates Payable (Sq Ft)	Service Charge (Sq Ft)	Total Month	Total Year	Availability
3rd - Fully Fitted	1,583	£72.50	£25	£13.04	£14,582.07	£174,984.82	Under Offer
2nd - Fully Fitted	1,548	£69.50	£25	£13.04	£13,872.66	£166,471.92	Available
1st - Fully Fitted	1,559	-	On Application	On Application	-	-	Under Offer
Unit - Ground & Lower Ground	2,110	£52.50	£25	£13.04	£15,919.95	£191,039.40	Available
Total	6,800	£64.83	£25	£13.04	£44,374.68	£532,496.14	

For Rent

22-24 Cowper Street
Shoreditch EC2A

Tenure

New Lease

Availability

Available Immediately

Compton Concierge

Want your workspace *managed*?

Find out more

compton.london/concierge

Content

Watch the Film
(click button)



Contact Us

compton.london

020 7101 2020

enquiries@compton.london

All appointments to view must be arranged via sole agents, Compton, through:



Emma Higgins

eh@compton.london

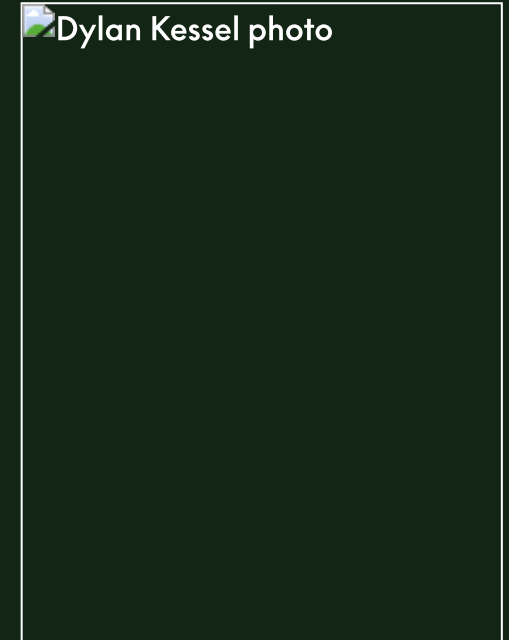
0207 101 2020 | 07769 605 295



Elliott Stern

es@compton.london

0207 101 2020 | 07834 918700



Dylan Kessel

dk@compton.london

0207 101 2020 | 07734374594