

Major Rent Reduction!

451 Park Avenue South

Raymond Corbett Building

Area

Entire 8th Floor: 5,200 RSF
 Entire 7th Floor: 5,200 RSF **LEASED**
 Entire 6th Floor: 5,200 RSF
 Lobby: 2,500 RSF

Total: 18,100 RSF

Rental Rate

Upon Request

Possession

Arranged

Term

8th, 6th, & 5th Floors: Long Term

[DOWNLOAD BROCHURE](#)

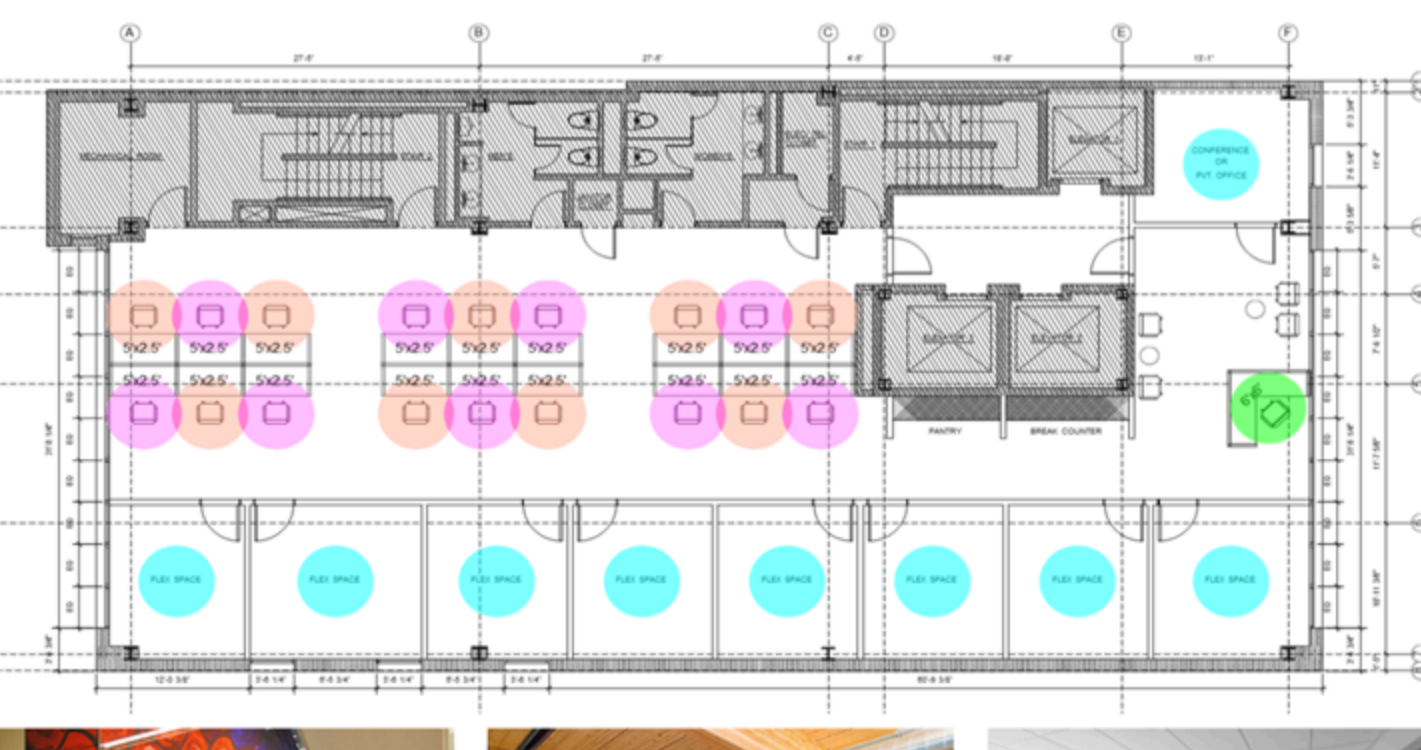
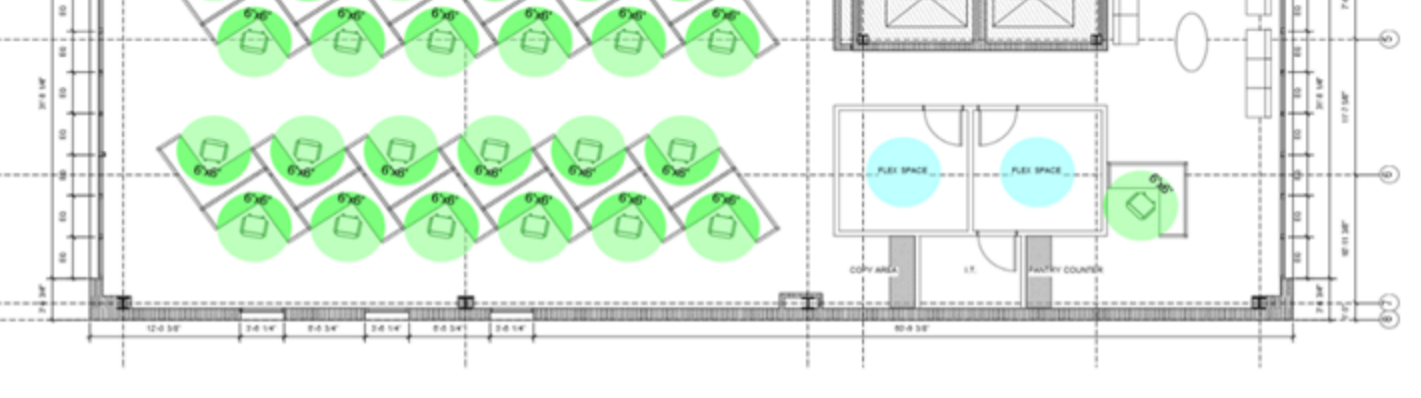
Landlord's Work

New building installation available on 8, 6 and 5

Comments

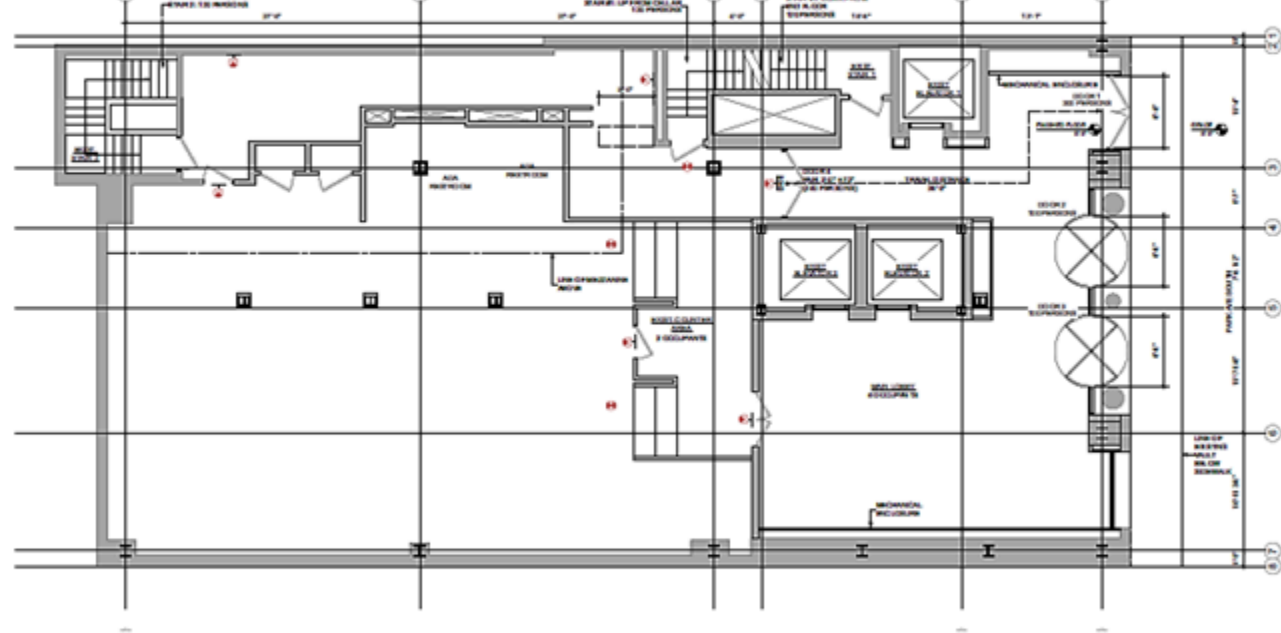
- Institutionally owned property
- Expansive granite and marble lobby
- Attended lobby 24/7
- Brand new elevators
- State of the art building conference facility available to tenants
- Floors are individually controlled by tenant and HVAC can be operated 24/7
- Emergency generator on the roof
- Cleaning included
- One block from 4 and 6 subways
- Lobby space ideal for medical uses
- 7th floor in move in condition

Entire 5th, 6th and 8th Floor Test Fits



Spaces can also be constructed per the existing conditions on the 7th floor.

Lobby Space



Ideal for Medical Use

For information, please contact:

Barry Goodman
 Senior Managing Director
 t 212-372-2243
barry.goodman@nmrk.com

125 Park Avenue
 New York, NY 10017
 t 212-372-2243

nmrk.com

