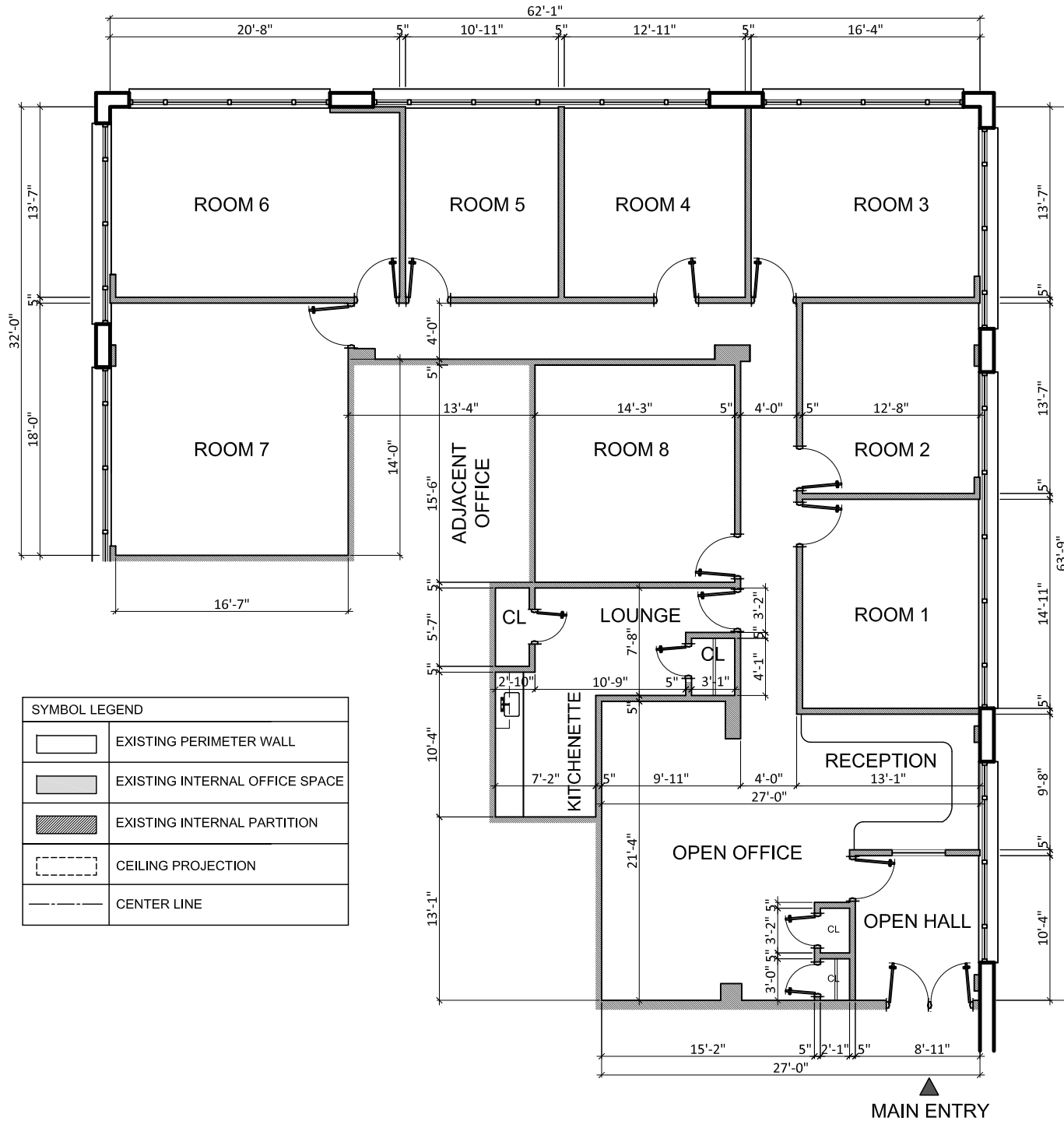


SUITE 200

FLOOR AREA:
2792 SQ FT

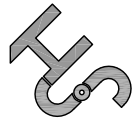


| SYMBOL LEGEND | |
|---------------|--------------------------------|
| | EXISTING PERIMETER WALL |
| | EXISTING INTERNAL OFFICE SPACE |
| | EXISTING INTERNAL PARTITION |
| | CEILING PROJECTION |
| | CENTER LINE |

▲ MAIN ENTRY

SUITE 200

1 LINDEN PLACE, GREAT NECK, NY



SANDRA HERRERA
SH - BUILDING DESIGN
www.sandra-herrera.com
NEW YORK
516-884-1730
SH@SANDRA-HERRERA.COM

RECEIVED & FILED BY

SUITE 200

1 LINDEN PLACE, GREAT NECK, NY

AS BUILT PLANS

CONTACT:
Bradley J. Diamond
II PARALLEL
7 Old Westbury Rd.
Roslyn Heights, NY 11577
C +1516 606 4656

PARALLEL



AS BUILT PLANS

3/32"=1'-0"