

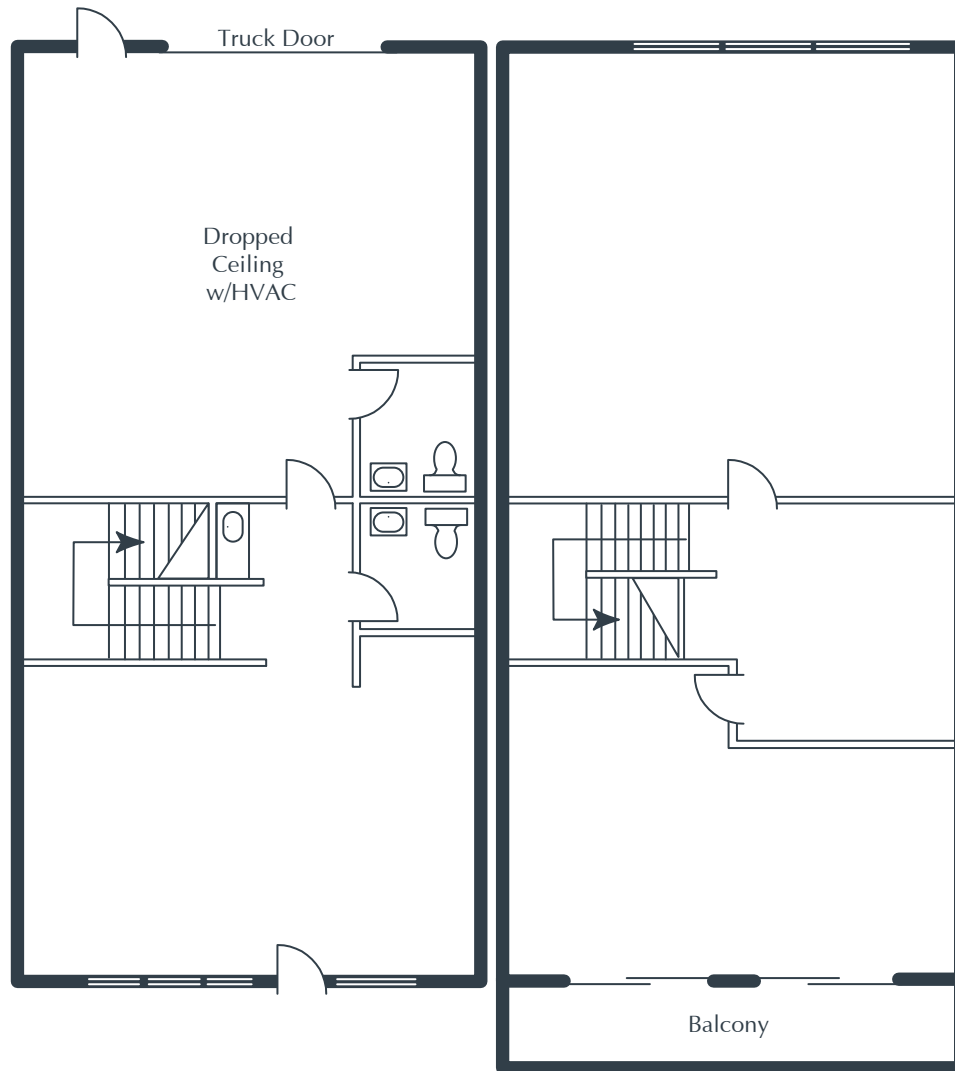
JAMBOREE BUSINESS CENTER

2691 Richter Avenue, Suite 118
Irvine, CA

2,395 Square Feet

\$1.79 SF/MO

Triple Net



NOTES

- Reception
- Window Office
- 2 Restrooms
- Coffee Bar
- Large Open Work Areas
- Ground-Level Truck Door
- Approximately 456 sq. ft. of Full-Height Warehouse
- Part of a Professionally Managed Business Park

Created by Olen Commercial Realty Corp., 2022.
Information is not to be published or copied without
written approval. Square footage and floor plans are
estimates and should be separately verified. All rates,
terms, floor plans, and building facts are subject to
change without notice.

ea 04.29.2026

MARIA MEYER

Senior Leasing Director
949.719.7215
mmeyer@olen.com



Seven Corporate Plaza
Newport Beach, CA
949.644.6536
www.olen.com