

2365

IRON POINT ROAD

FOLSOM, CA



FOLSOM'S PREMIER OFFICE BUILDING
HIGH VISIBILITY FREEWAY LOCATION

NEWMARK


BASIN STREET
PROPERTIES

Exclusively Marketed By:

Jack Blackmon
916.494.2349
jack.blackmon@nrmk.com
CA RE License #01999561

Jodie Robinson
916.569.2318
jodie.robinson@nrmk.com
CA RE License #022143577

Chris Lemmon
916.367.6349
chris.lemmon@nrmk.com
CA RE License #01506816

2365
IRON POINT ROAD
 FOLSOM, CA



PROPERTY HIGHLIGHTS



Updated common area improvements



30+ seat conference and training room



Short walk to numerous amenities



LEED Gold



4.5/1,000 parking ratio



Fiber ready



Onsite fitness center with showers



High Identity Building
 (roughly 200,000 vehicles per day)



Designated walking paths surround
 wetlands preserve area



Updated lobby with television and furniture

CONCIERGE SERVICES



Basin Street Properties is proud to announce our newest tenant amenity – Concierge Services. Tenants have access to family entertainment, travel arrangements, and a host of other business services.



Personal Services

- Housekeeping / sitting
- Pet sitting / grooming
- Auto detailing / maintenance
- Dry cleaning / laundry
- Fitness trainer / massage services
- Customized personal shopping



Entertainment Services

- Tickets for concerts, theater and sporting events
- Restaurant reservations
- Visiting client and guest arrangements



Event and Meeting Services

- Site selection
- Catering, food and beverage arrangements
- Multi-media / A.V. arrangements

2365
IRON POINT ROAD
FOLSOM, CA

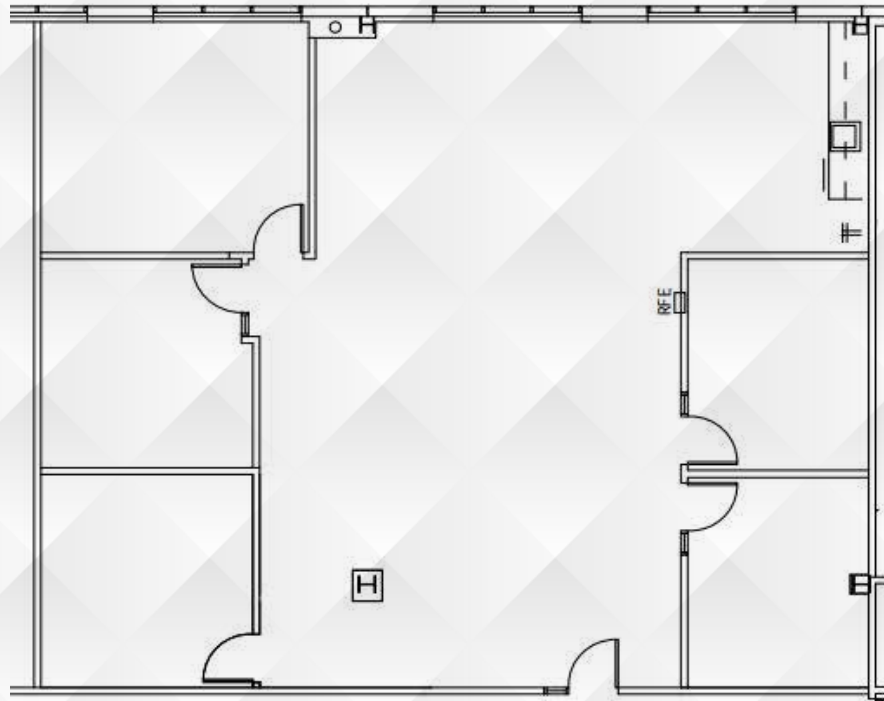
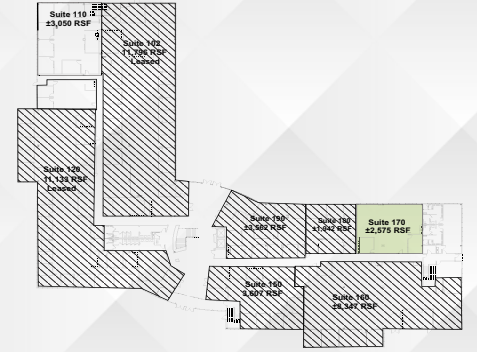
FOLSOM'S PREMIER OFFICE BUILDING



2365
IRON POINT ROAD
FOLSOM, CA



FLOOR PLANS



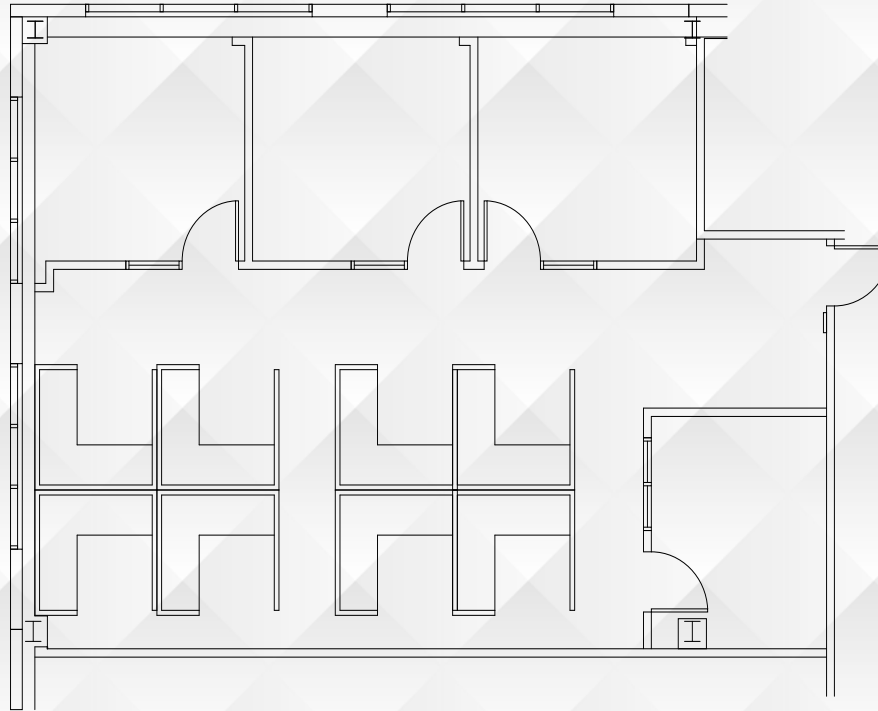
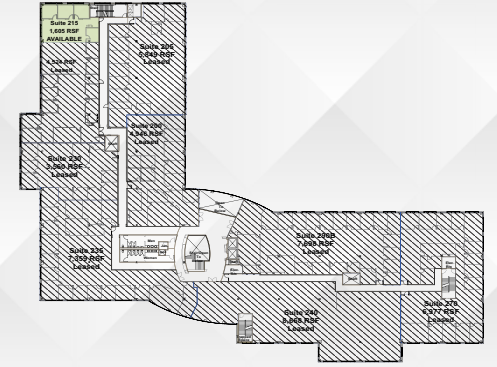
AVAILABLE WITH 30 DAYS NOTICE

FIRST FLOOR | ±2,575 RSF | SUITE 170

2365
IRON POINT ROAD
FOLSOM, CA



FLOOR PLANS



SECOND FLOOR | ±1,605 RSF | SUITE 215



2365

IRON POINT ROAD

FOLSOM, CA



DISCLAIMER: The distributor of this communication is performing acts for which a real estate license is required. The information contained herein has been obtained from sources deemed reliable but has not been verified and no guarantee, warranty or representation, either express or implied, is made with respect to such information. Terms of sale or lease and availability are subject to change or withdrawal without notice.

NEWMARK



Exclusively Marketed By:

Jack Blackmon
916.494.2349
jack.blackmon@nrmk.com
CA RE License #01999561

Jodie Robinson
916.569.2318
jodie.robinson@nrmk.com
CA RE License #022143577

Chris Lemmon
916.367.6349
chris.lemmon@nrmk.com
CA RE License #01506816