



For Sublease

19600 Van Ness Avenue Torrance, CA 90501

Contact us:

Frederick Regnery

Principal, Vice Chair
+1 847 698 8228
frederick.regnery@colliers.com

Jeff Smart

Senior Executive Vice President
+1 310 321 1812
jeffrey.smart@colliers.com

Elizabeth Capati

Senior Associate
+1 310 321 1855
elizabeth.capati@colliers.com

Colliers

2141 Rosecrans Ave
Suite 1120 El Segundo, CA 90245

177,372 SF Industrial for Sublease

Building:

- 177,372 SF
- 15,244 SF Office Space
- 30' Clear Height
- 28 DH, 1 GL Loading Doors
- 800 Amps 277/480v
- ESFR Sprinklers
- Secured Truck Yard Area
- 118 Car Parking Spaces

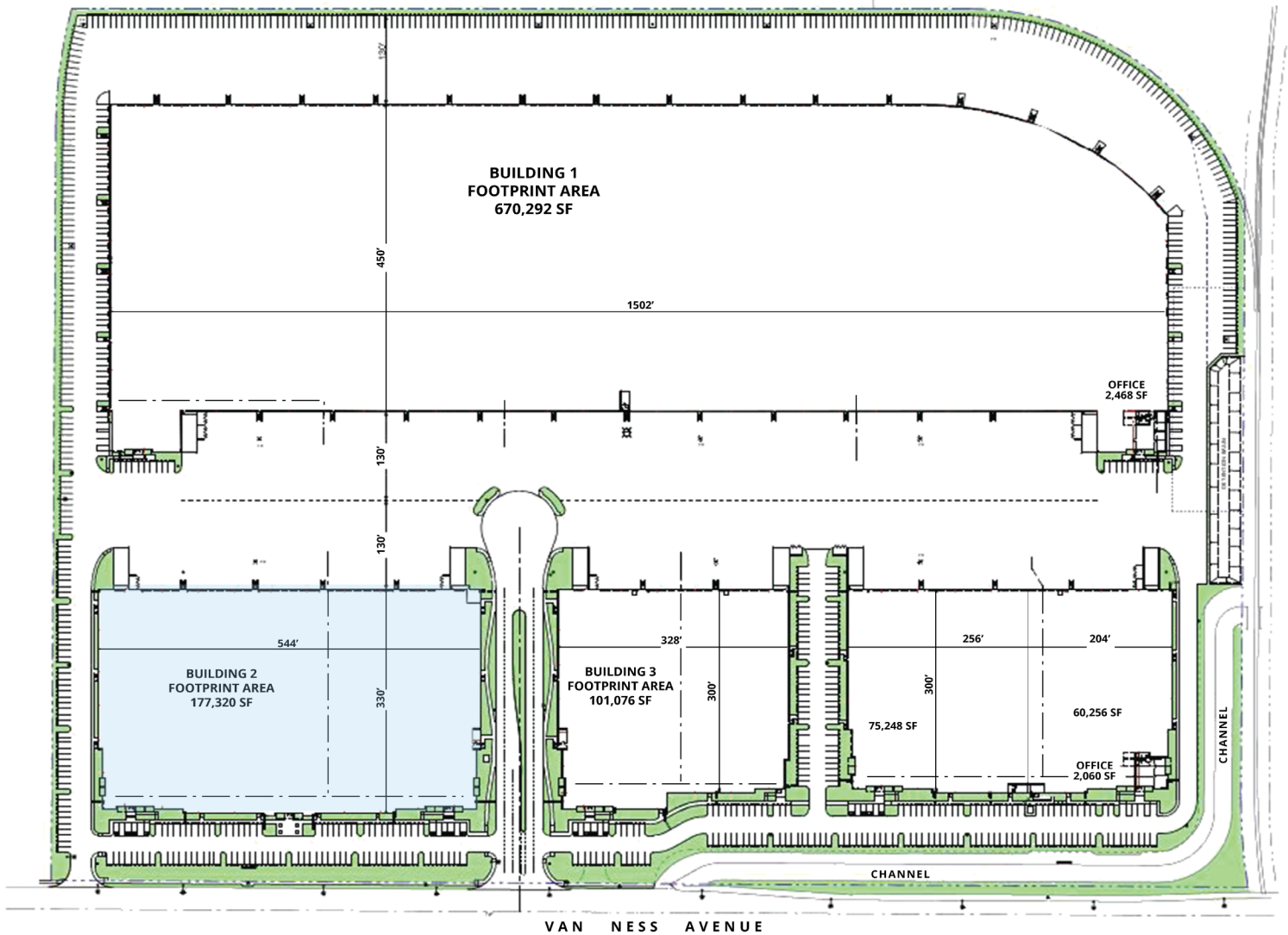
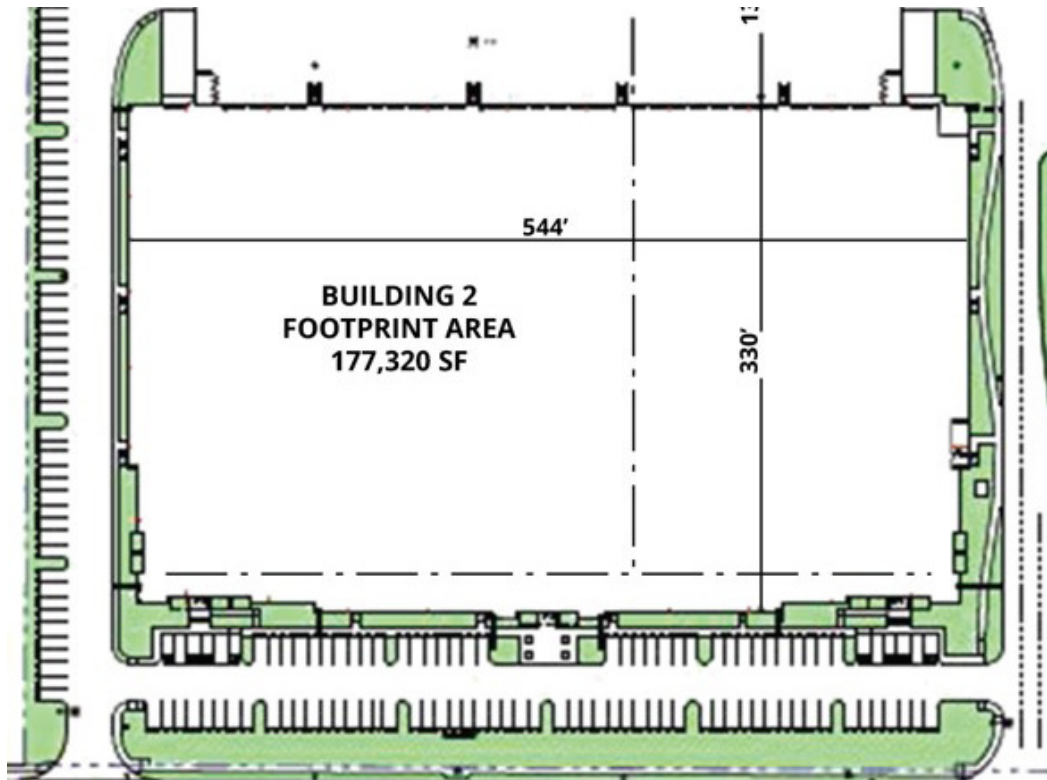
Term:

- Through June 30, 2028

Highlights:

- Immediate Access to 405 and 110 Freeways
- Proximity to World Ports of Los Angeles and Long Beach

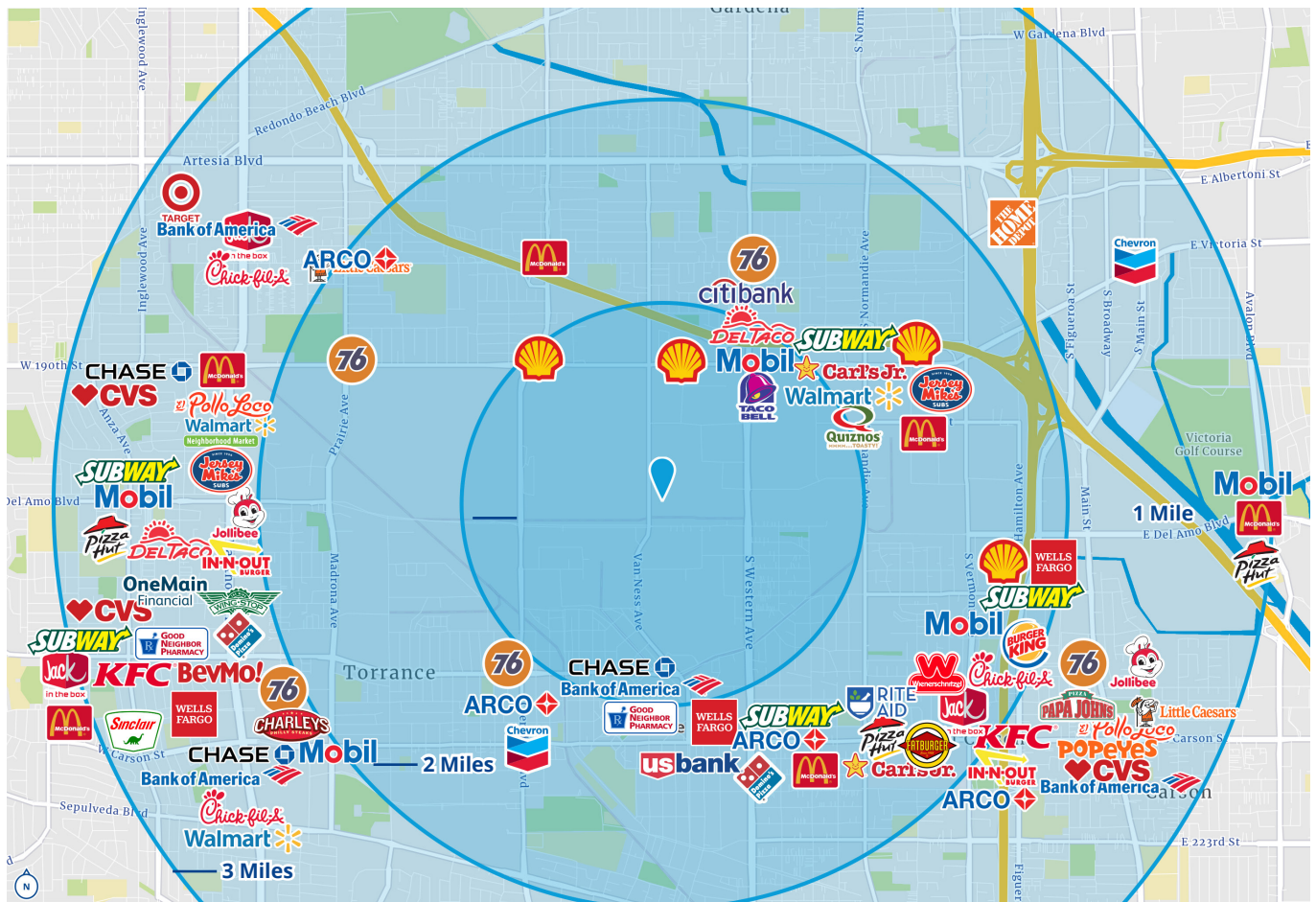
Site Plan



Location & Access

Amenities within a 3 Mile Radius

- Mobil
- Arco
- 76
- Chevron
- Sinclair
- Shell
- Target
- Walmart
- Chase
- One Main Financial
- Wells Fargo
- US Bank
- Bank of America
- Citi Bank
- Jolibee
- Domino's
- Del Taco
- In-N-Out
- Tacobell
- Quiznos
- McDonald's
- Jersey Mike's
- Carl's Jr
- Fat Burger
- Chick-Fil-A
- Jack in The Box
- Popeyes
- Good RX
- CVS
- Papa John's
- And more!



Location & Access

Travel Distances

Interstate I-405	1.1 Miles 4 Mins
Interstate I-110	2.6 Miles 9 Mins
Interstate I-91	3.7 Miles 12 Mins

