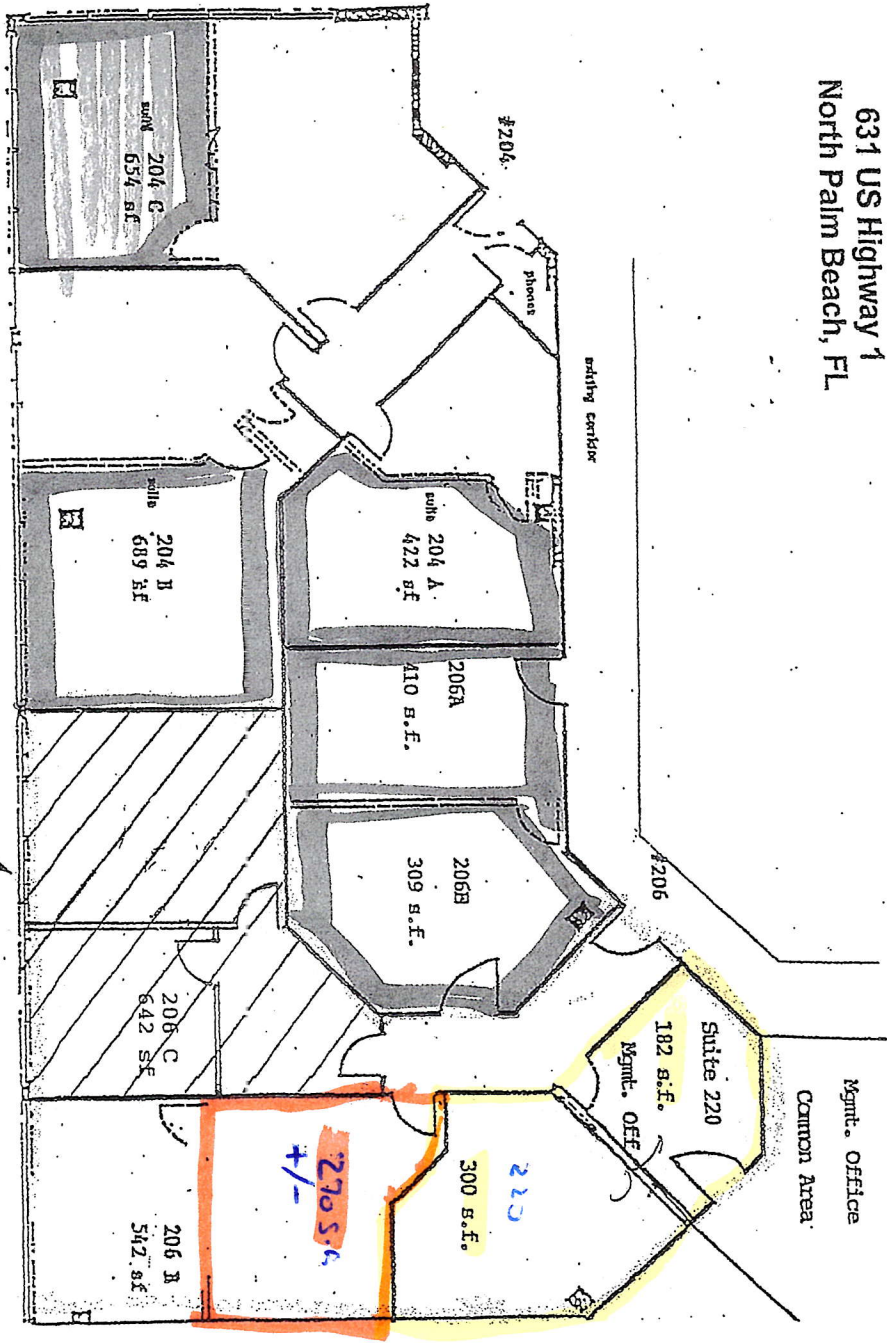


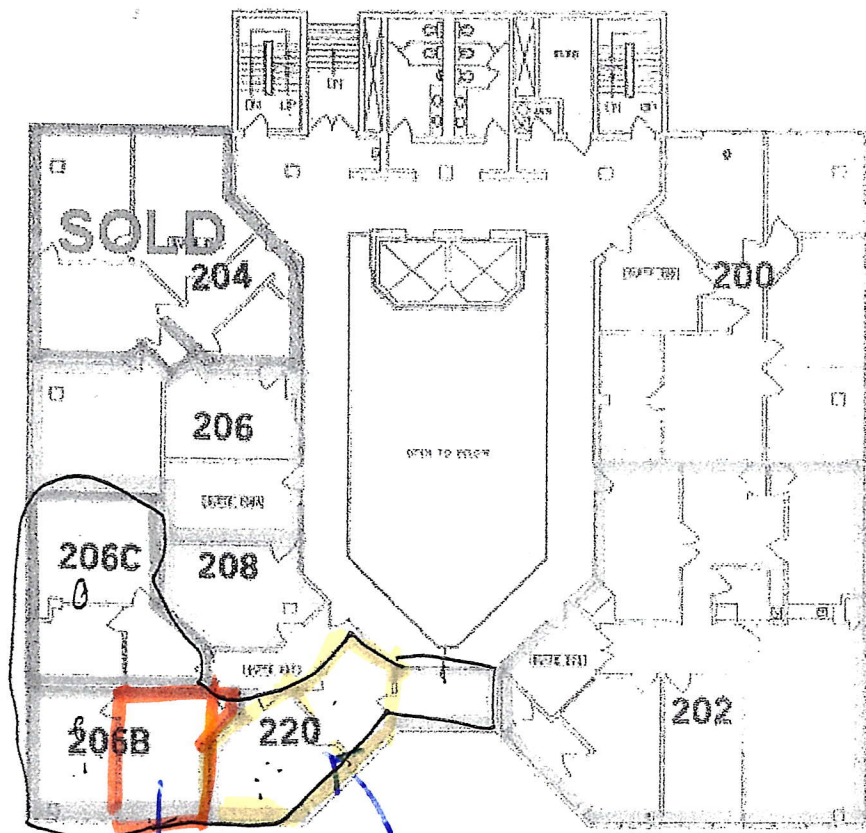
THE ATRIUM
 631 US Highway 1
 North Palm Beach, FL



BY

Tenant's Initials _____
 Landlord's Initials _____

EXHIBIT B, PREMISES SITE PLAN
 TO OFFICE BUILDING LEASE
 BETWEEN TRANSCONTINENTAL ATRIUM, INC. LANDLORD
 AND UNIVERSAL FIDELITY CORPORATION, TENANT



Second Floor

0 15'
SCALE



GRINDAL
plus approx 270

48256