

# Heathrow I

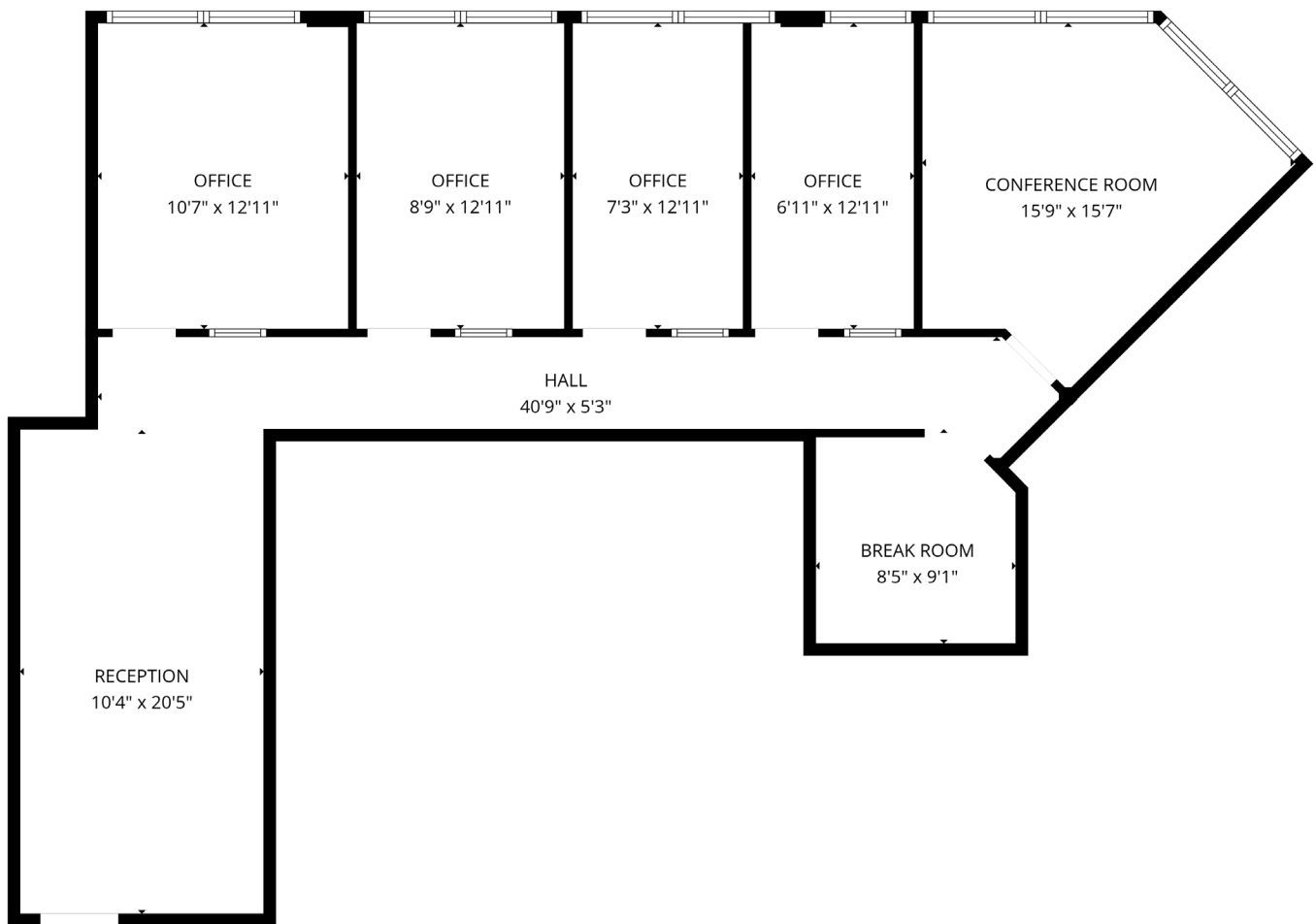
CLASS B OFFICE BUILDING TOTALING 71,160 RSF

250 INTERNATIONAL PARKWAY  
LAKE MARY, FL 32746



Click here for a virtual  
tour of Suite 212


## Suite 212: 1,326 SF



**Nathan Eissler** CCIM, SIOR,  
Executive Vice President  
+1 407 342 7494 | [nathan.eissler@jll.com](mailto:nathan.eissler@jll.com)

**Brooks Robinson**  
Senior Associate  
+1 407 619 2249 | [brooks.robinson@jll.com](mailto:brooks.robinson@jll.com)

JLL | 250 S Orange Ave | Orlando FL 32801

 **JLL** SEE A BRIGHTER WAY

Although information has been obtained from sources deemed reliable, neither Owner nor JLL makes any guarantees, warranties or representations, express or implied, as to the completeness or accuracy as to the information contained herein. Any projections, opinions, assumptions or estimates used are for example only. There may be differences between projected and actual results, and those differences may be material. The Property may be withdrawn without notice. Neither Owner nor JLL accepts any liability for any loss or damage suffered by any party resulting from reliance on this information. ©2026 Jones Lang LaSalle IP, Inc. All rights reserved.