

6 MCLAREN SUITE M

IRVINE, CA 92618



FLEX SUBLEASE | AVAILABLE IMMEDIATELY

2,400 RSF

HUGHESMARINO

BUILDING INFORMATION



BUILDING

Irvine Business Center

ADDRESS

6 McLaren,
Suite M,
Irvine, CA 92618

AVAILABLE

Immediately

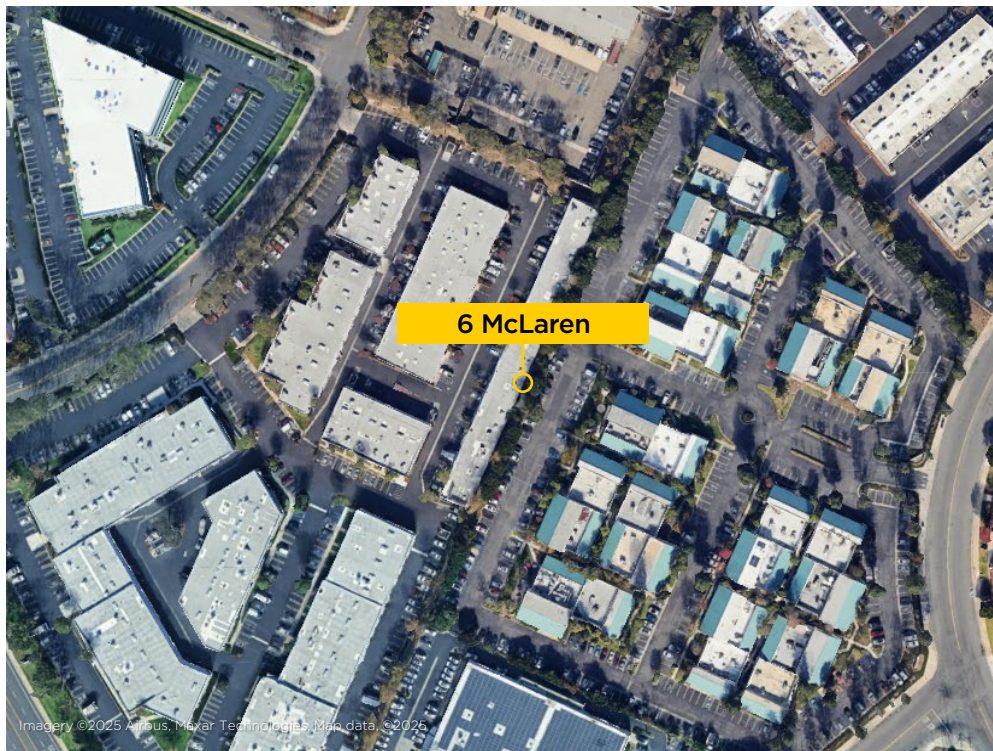
ASKING RATE

\$1.95 PSF Industrial Gross

AVAILABLE THROUGH

October 31, 2027

LOCATION HIGHLIGHTS



Imagery ©2025 Airbus, Maxar Technologies, Map data ©2025

FREWAY ACCESS



RETAIL & RESTAURANTS



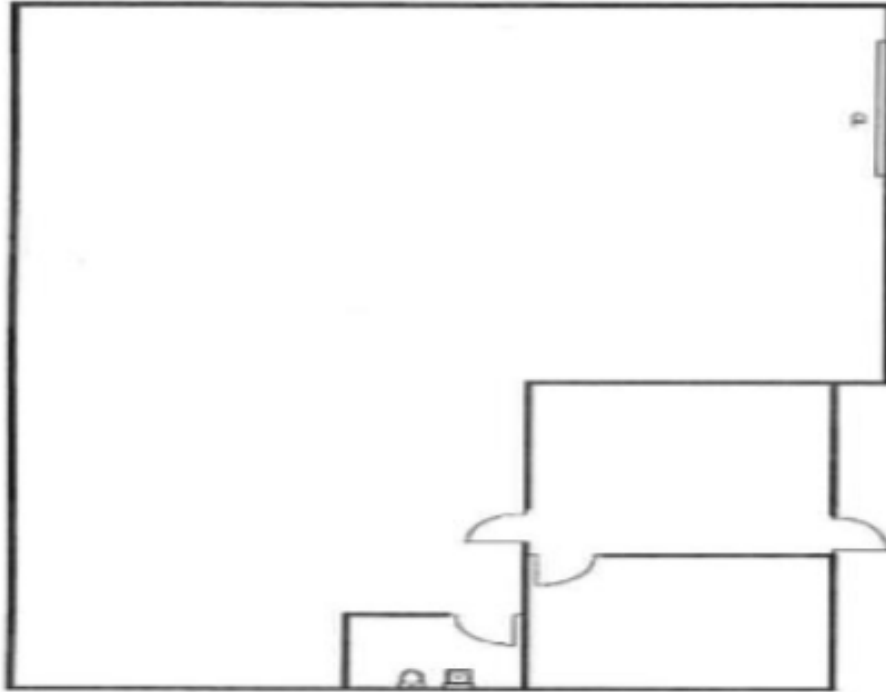
HEALTH CLUB



KEY HIGHLIGHTS

- Excellent I-5 and I-405 access and visibility
- Abundant retail, restaurant & health club amenities
- Minutes away from the Irvine Spectrum
- Less than 20 minutes to John Wayne/Orange County Airport

FLOOR PLAN



SPACE HIGHLIGHTS

- 2,400 SF
- 600 SF of Office Space
- Available Immediately Through October 2027
- Corner Unit
- One (1) GL Door
- 16' Clear Height
- New HVAC System
- Existing Alarm System Is Installed (Can Be Easily Taken Over)

6 MCLAREN, SUITE M



6 MCLAREN, SUITE M



6 MCLAREN, SUITE M



6 MCLAREN, SUITE M



6 MCLAREN, SUITE M



CONTACT INFORMATION



BRYCE ASHTON

bryce@hughesmarino.com

949.230.0166

Lic. #02232756

**2 PARK PLAZA, SUITE 750,
IRVINE, CA 92614**

949.333.3111 | hughesmarino.com

HUGHESMARINO