

1 WSQ

1 Willoughby Square
235 Duffield Street

DOWNTOWN BKLYN

PRISTINE, FURNISHED, WIRED, MOVE-IN CONDITION SPACE

9th Floor For Lease

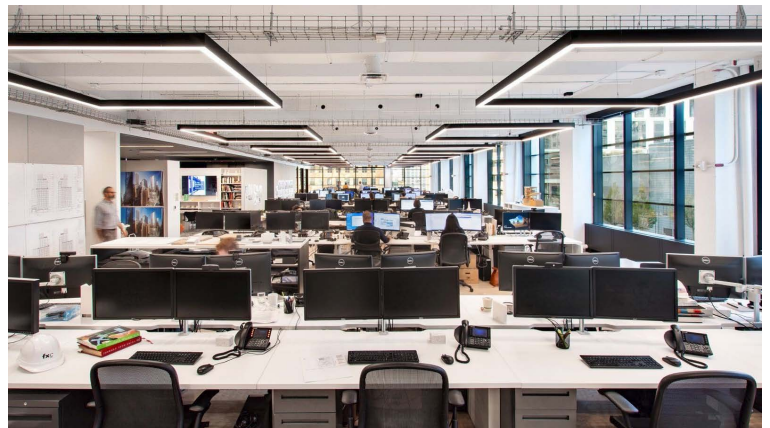
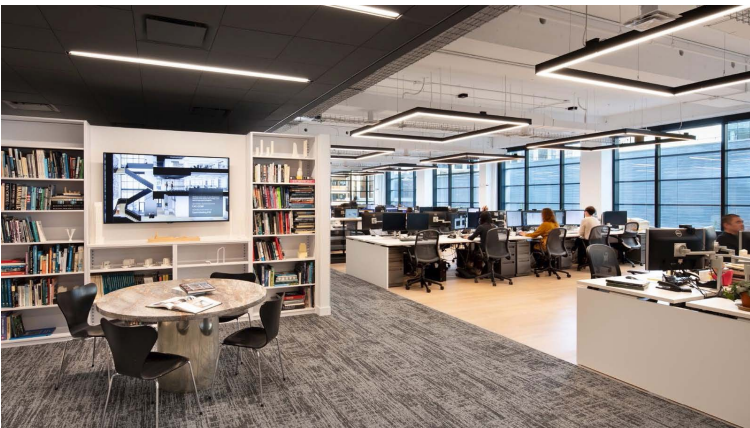


9th Floor Approximately 14,000 RSF

- Up to 3 conference rooms and 80 positions
- Pantry
- Possession: Immediate
- Base Rent: Upon Request
- Term: 1 - 7 Years
- Access to tenant's conference center and shared pantry
- Access to huge outdoor space and building amenities
- Cleaning is included

Building amenities include:

- Gracious 16th floor space exclusively for tenants that includes conference rooms with state of the art technology
- Catering facility for offering food and beverage
- Bicycle storage room with dedicated entrance, shower facilities and locker room



Nearby Transportation:



Inspection by appointment only:



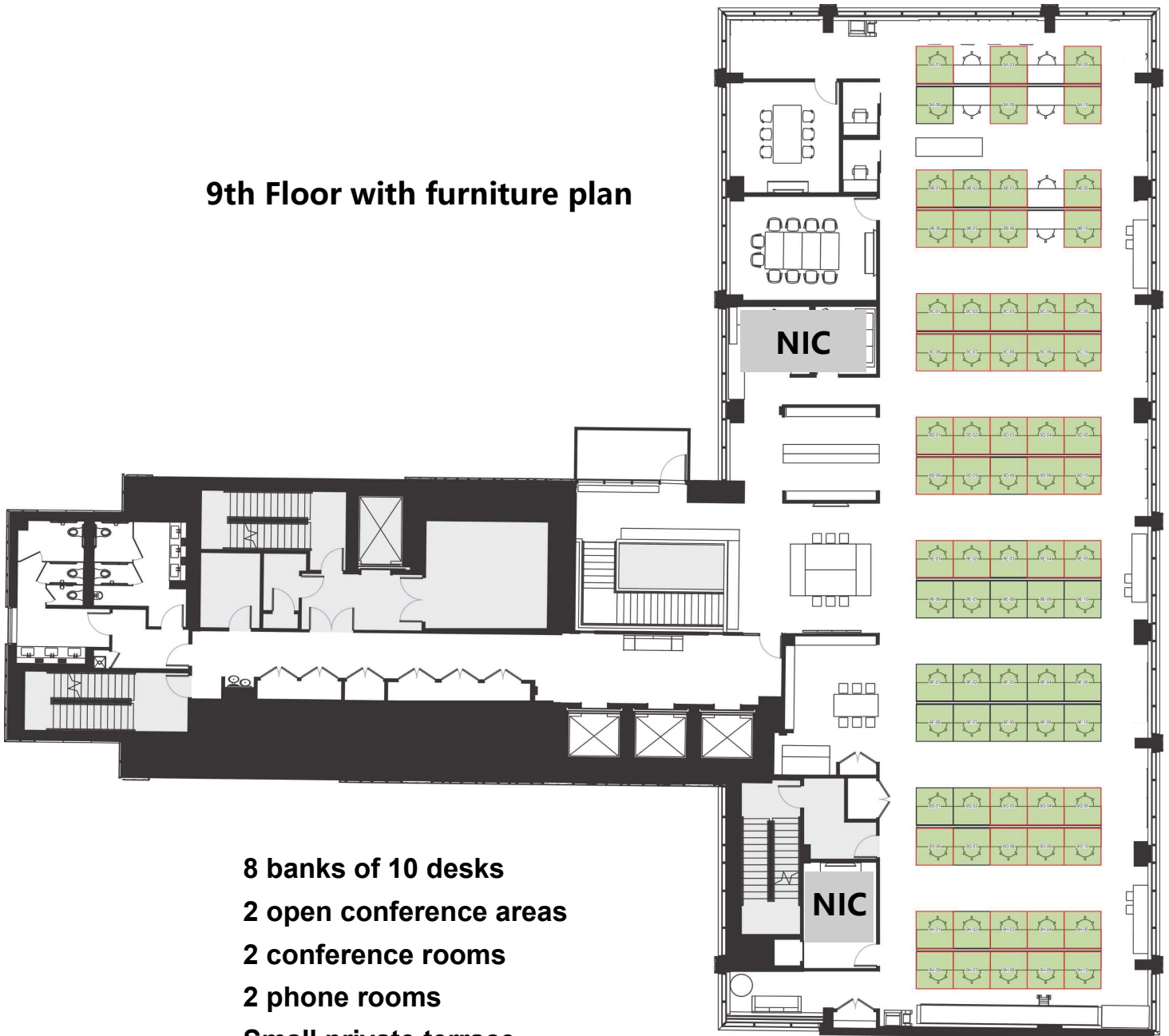
www.signaturepartners.com

MICHAEL PINNEY
(212) 813-3573
pinney@signaturepartners.com

ANDREW M. WEISS, JR
(212) 813-3567
weiss@signaturepartners.com

1 WSQ

9th Floor with furniture plan



- 8 banks of 10 desks**
- 2 open conference areas**
- 2 conference rooms**
- 2 phone rooms**
- Small private terrace**
- Access to building-wide amenities**

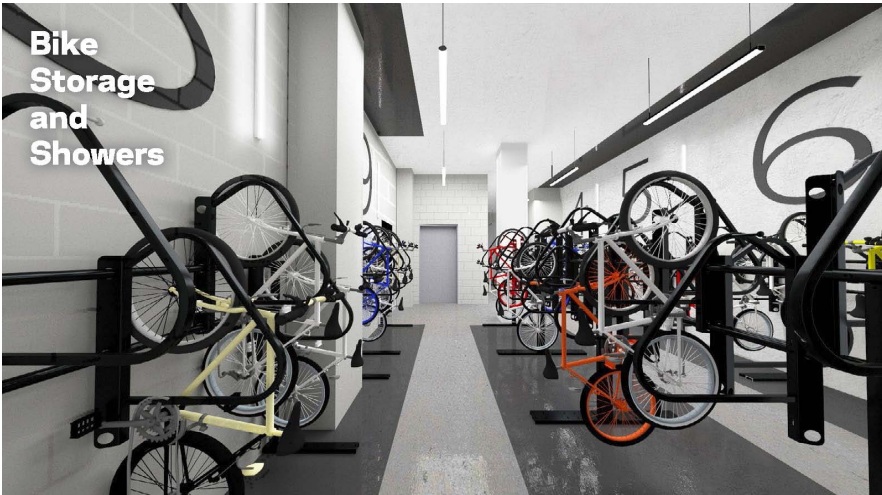
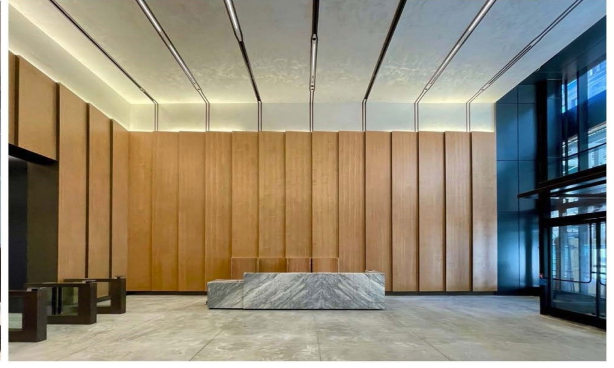


www.signaturepartners.com

MICHAEL PINNEY
(212) 813-3573
pinney@signaturepartners.com

ANDREW M. WEISS, JR
(212) 813-3567
weiss@signaturepartners.com

1 WSQ



www.signaturepartners.com

MICHAEL PINNEY
(212) 813-3573
pinney@signaturepartners.com

ANDREW M. WEISS, JR
(212) 813-3567
weiss@signaturepartners.com