

Roseville, CA

# VINEYARD POINTE SHOPPING CENTER



## FOR LEASE

For Further Information,  
Please Contact:

**Brian English**  
benglish@centurymgmt.com

**Keith Galliano**  
kgalliano@centurymgmt.com

1001 Enterprise Way,  
Suite 250  
Roseville, CA 95678  
Phone: (916) 784-3666  
Fax: (916) 784-3667

**Century  
Management  
Company**

## 3031 Foothills Blvd

### Features

- Two units available: Suites 105 & 135
- Monument Signage Available
- Near Denio's Auction with high weekend traffic

### Demographics

	1 mile	3 mile	5 mile
Population	19,442	101,896	319,562
Income:	\$113,889	\$126,306	\$129,011

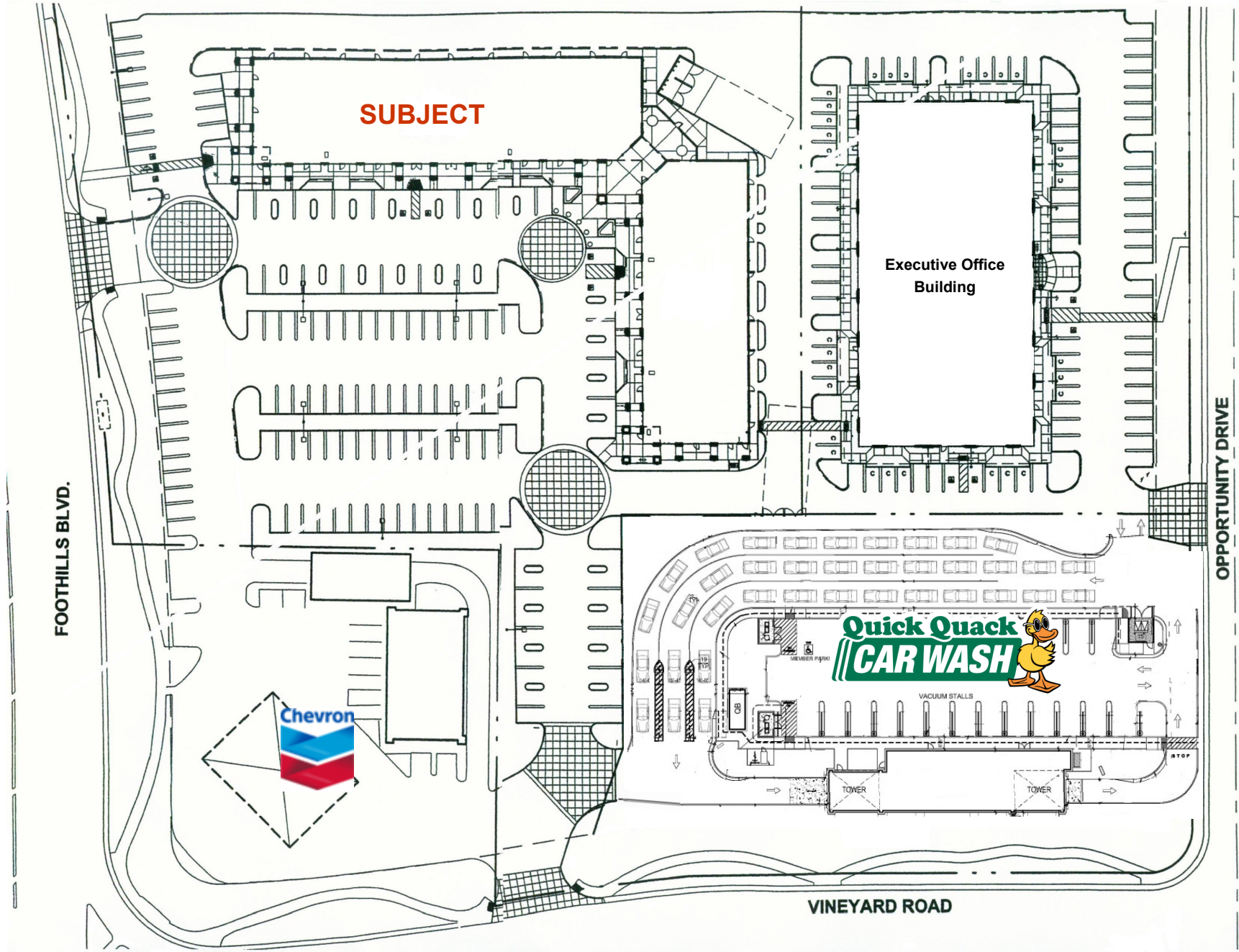
### Traffic Counts

Foothills Blvd (@ Baseline Rd/Main St): 31,174 ADT



Roseville, CA

# VINEYARD POINTE SHOPPING CENTER



Roseville, CA

# VINEYARD POINTE SHOPPING CENTER

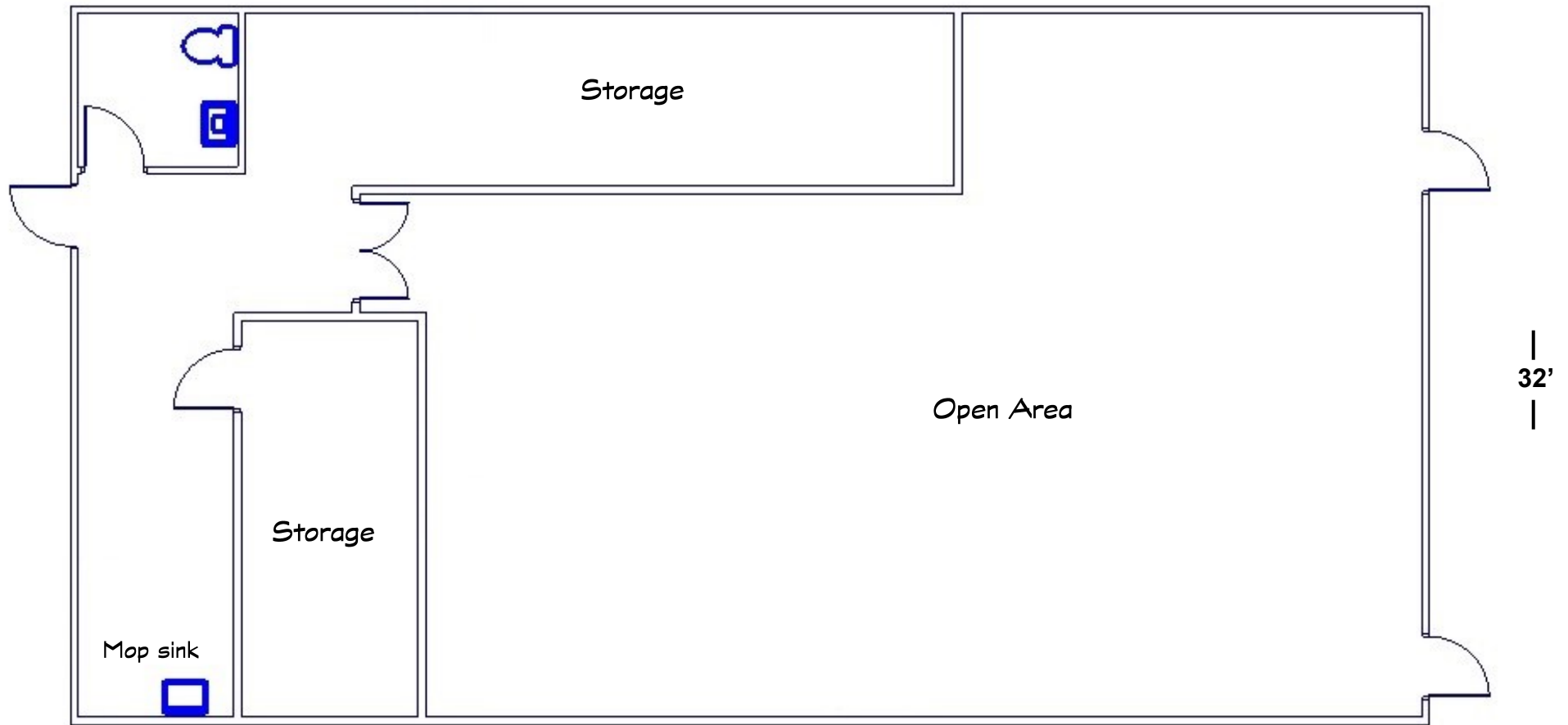


# VINEYARD POINTE SHOPPING CENTER

Suite 105

1,920 SF

— 60' —



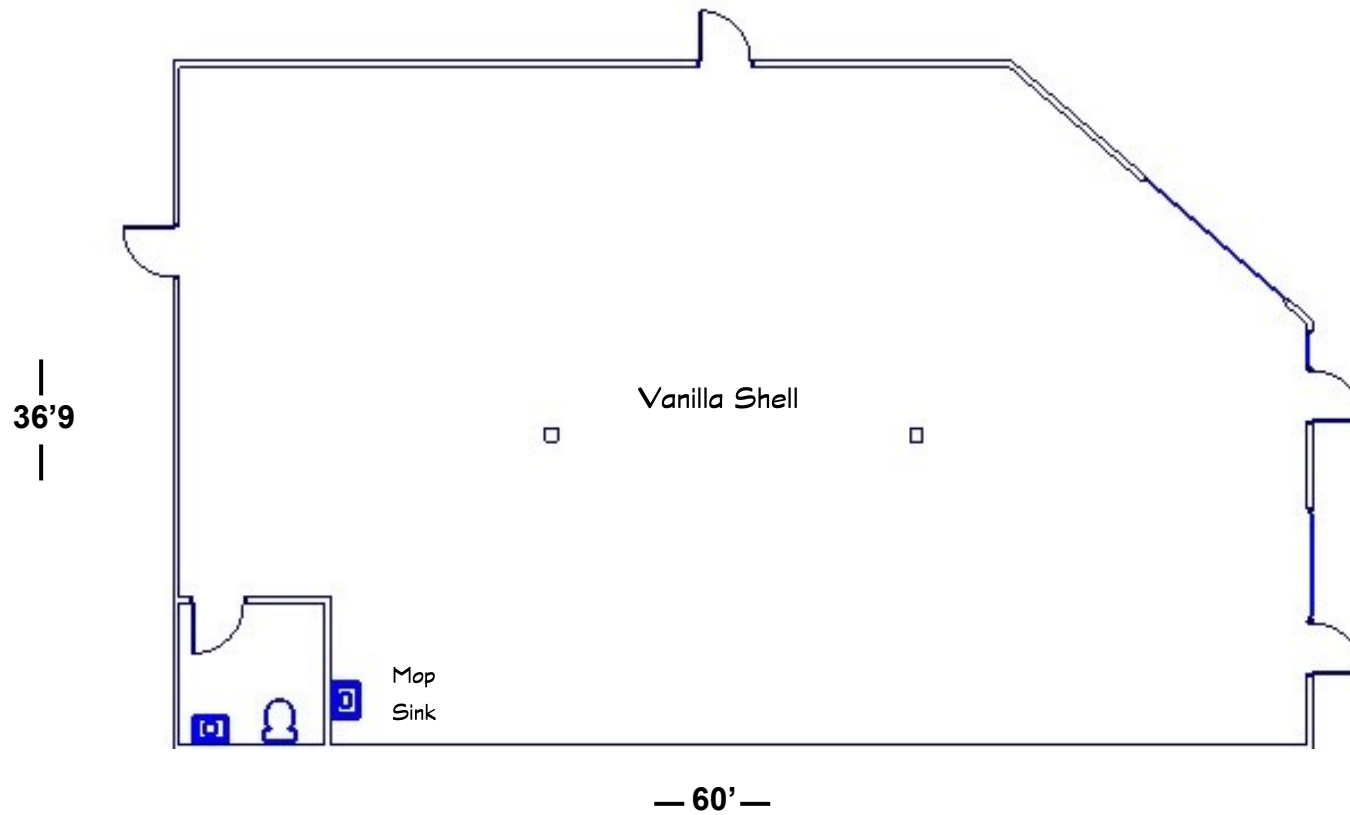
| 32' |

Roseville, CA

# VINEYARD POINTE SHOPPING CENTER

Suite 135

2,120 SF



# VINEYARD POINTE SHOPPING CENTER

