

9215

Boul. Langelier

Saint-Léonard, Montréal

OFFICE SPACE
FOR LEASE



Germando Mazzotta

Commercial Real Estate Broker

📞 514.743.5013



Dimitri (Jimmy) Mouhteros

Commercial Real Estate Broker

📞 514.296.6203



Peter Mouhteros

Certified Real Estate Broker, AEO

📞 514.229.3016

PROPERTY DETAILS

9215 Boul Langelier, Saint-Léonard, Montréal



AVAILABLE AREA

± 17,000 SF



OCCUPANCY

Immediate



ELEVATOR

YES

PROPERTY HIGHLIGHTS

- Office space located on second floor
- Access to a private elevator
- Abundant natural light
- Strategically located on Boul. Langelier, and in close proximity to highways 40 & 25, and boulevard Henri-Bourassa.
- Parking Available
- Space divisible

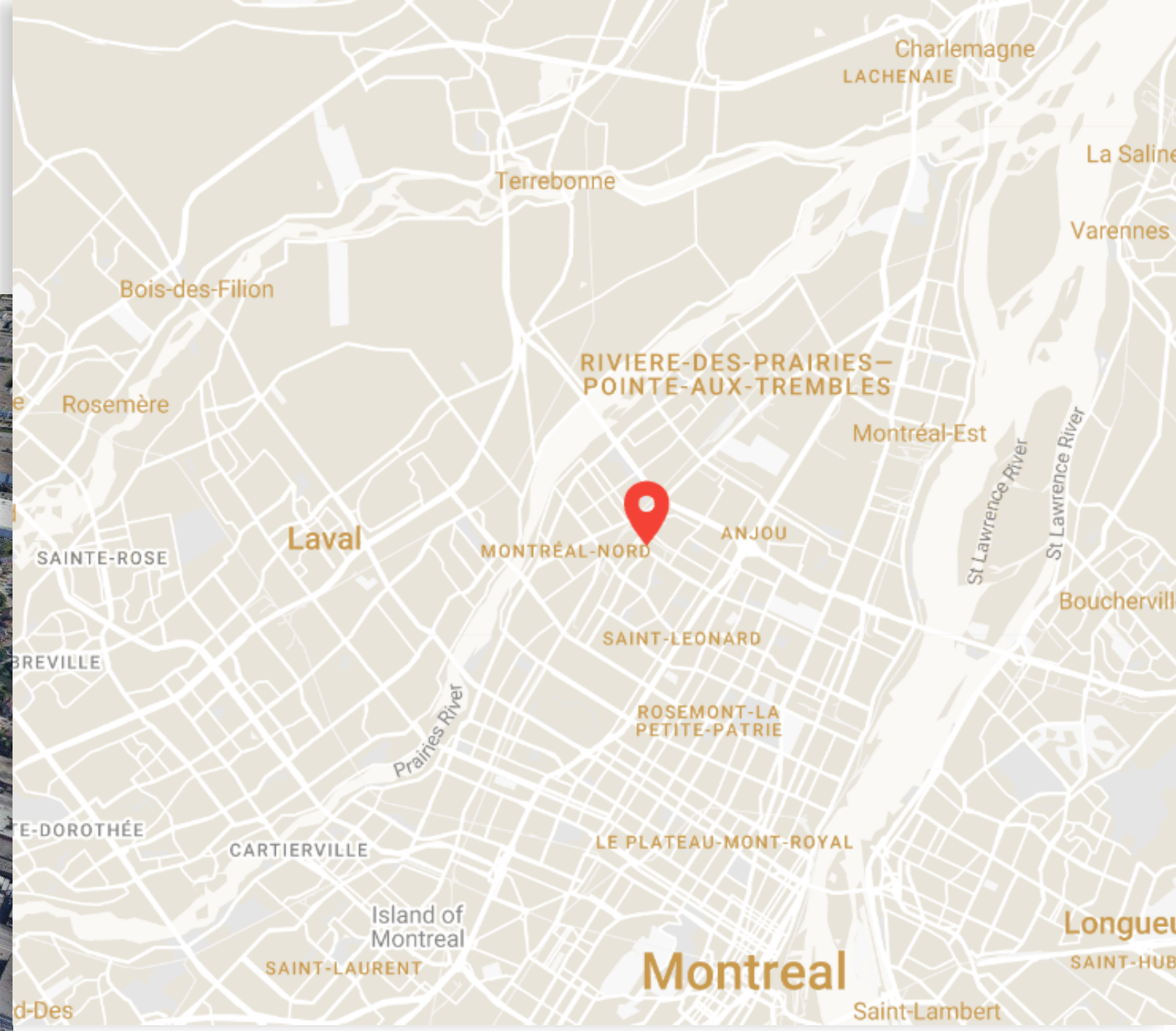
CONTACT US FOR LEASE RATE



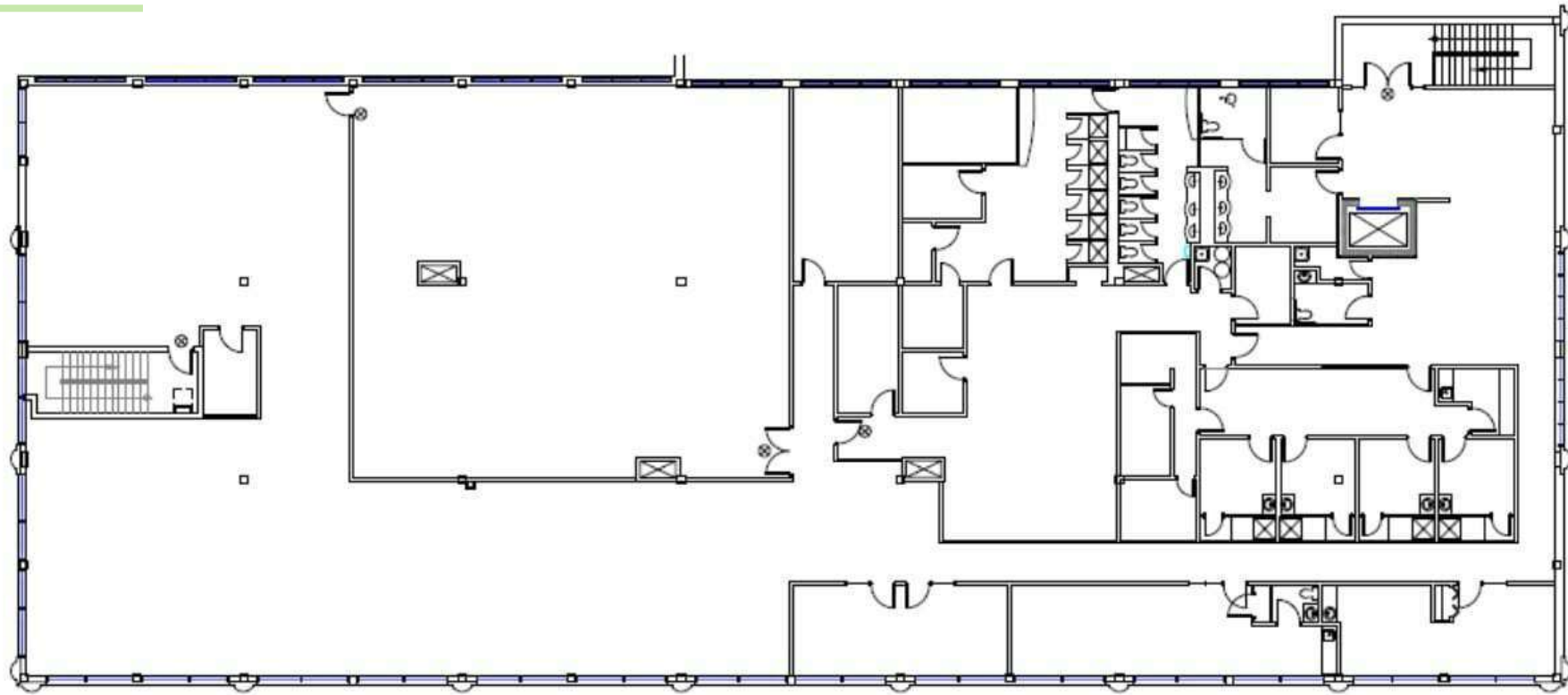
LOCATION



EASY ACCESS TO **HIGHWAY 40** , **HIGHWAY 25**,
AND MAIN ARTERY BOULEVARDS
LANGELIER AND HENRI-BOURASSA.



FLOOR PLAN



Deuxième étage
Second floor sq. ft.



AVAILABLE AREA: ± 17,000 SF

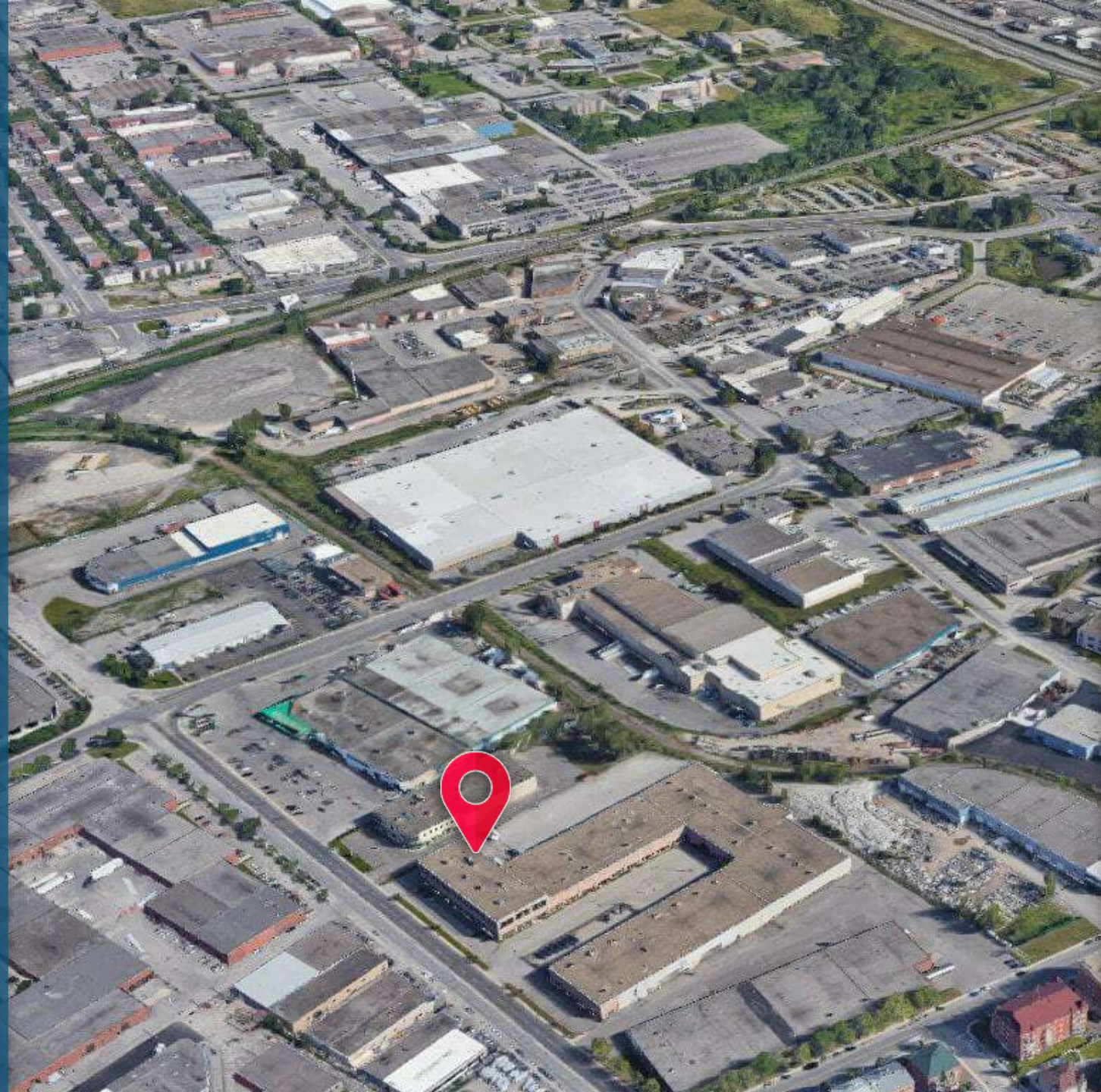
*DIVISIBLE



Commercial Real Estate Agency

4480 Chemin de la Côte-de-Liesse, suite 290,
Mont-Royal (Montréal), QC, H4N 2R1

Bur: 514.736.0511



CONTACT

Germando Mazzotta
Commercial Real Estate Broker



📞 514.743.5013

✉️ gmazzotta@trimontcanada.com

Dimitri (Jimmy) Mouhteros
Commercial Real Estate Broker



📞 514.296.6203

✉️ jmouhteros@trimontcanada.com

Peter Mouhteros
Certified Real Estate Broker, AEO



📞 514.229.3016

✉️ pmouhteros@trimontcanada.com

*DISCLAIMER: Information provided is based on sources considered reliable, without a guarantee of accuracy. No responsibility and/or warranty is assumed by the broker. This document is intended solely for informational purposes, and is made subject to errors, modifications, and omissions. The purchaser/lessee is encouraged to perform proper due diligence prior to an acquisition or lease agreement. This is not an offer or promise to sell/lease that could bind the vendor/lessor to the purchaser/lessee, but rather an invitation to submit such offers or promises. Any sale is made without legal warranty.