

Stand-Alone Warehouse With Yard

6940 Sonny Dale Drive, West Melbourne, FL 32904

New 2026 Construction / Centrally Located / Cleared & Fenced Yard



OFFERING SUMMARY

Available SF: 6,000 SF

Lease Rate: \$12,000 per month
(NNN)

Acreage: 1.53 Acres

Zoning: City of West Melbourne
Light Industrial &
Warehousing (M-1)

PROPERTY OVERVIEW

Interior: Est. 892 +/- SF HVAC Office with 2 ADA Restrooms.
Est. 5,108 SF Warehouse. Concrete Floor; est. 15' – 18' 8" Clear Height
Five 10' Wide x 14' Tall +/- Grade Level Doors
Total of 20 Asphalt Paved/Striped Parking Spaces.
100% Gated and Fenced. Mix of Asphalt, Concrete, and Crushed Granite
City Water/Sewer, 1-Phase 400 Amp FPL Electric
Est. \$5.00 PSF OPEX

LOCATION OVERVIEW

Strategically positioned just off of Nasa Boulevard which is the primary area connector between Interstate 95, Wickham Road and US1. Short drive to the Melbourne International Airport which is home to Northrop Grumman, L3Harris and Extant Aerospace among other employers. Lots of schools, restaurants and childcare nearby. Call today for details!



Michael S. Ullian, President, CCIM, SIOR Zach Ullian, SIOR

Licensed Real Estate Broker
Cell: 321.258.7556
mike@ullianrealty.com

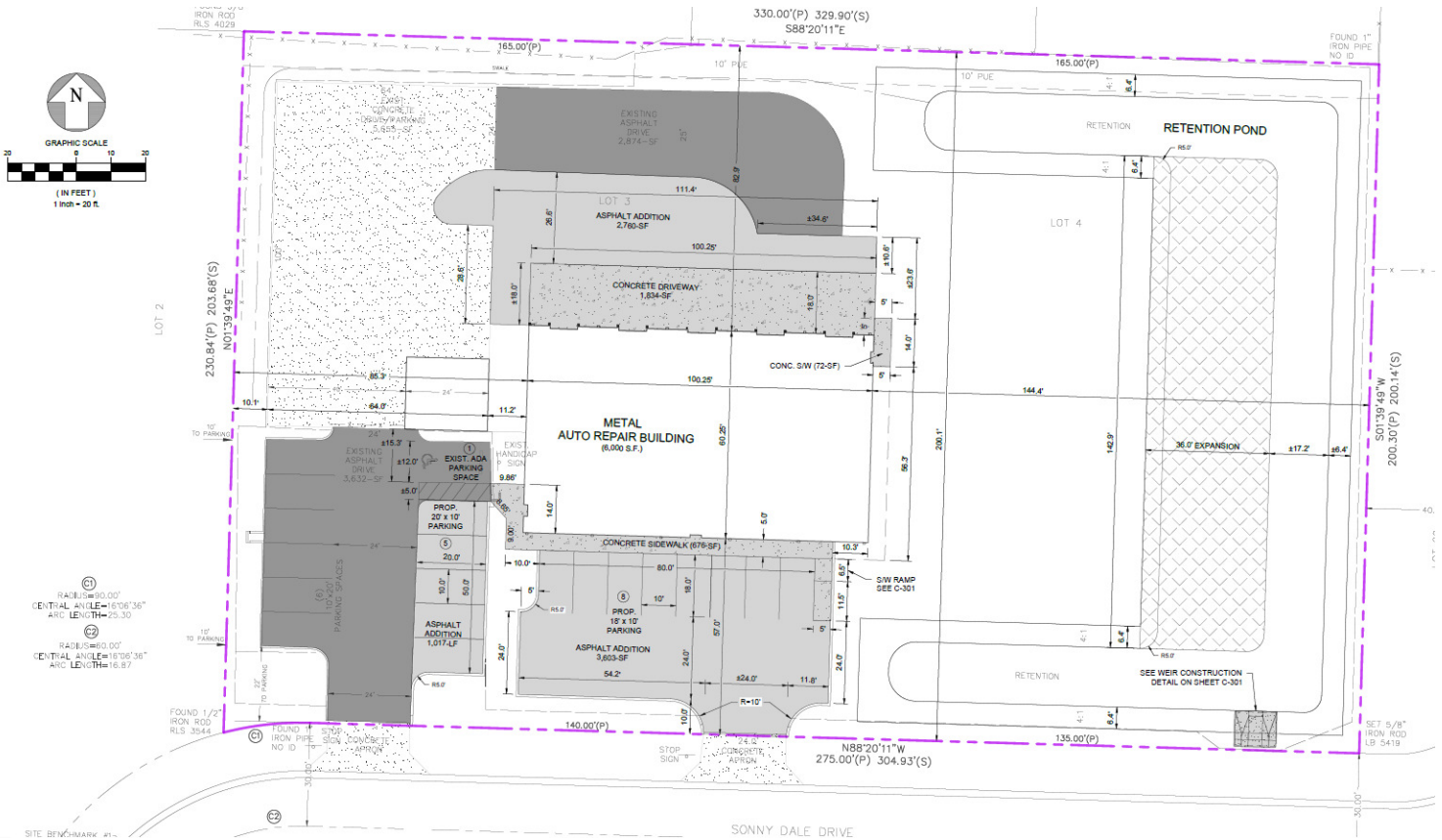
Broker Associate
Cell: 321.750.3439
zach@ullianrealty.com



Stand-Alone Warehouse With Yard

6940 Sonny Dale Drive, West Melbourne, FL 32904

Site Plan



Michael S. Ullian, President, CCIM, SIOR Zach Ullian, SIOR

Licensed Real Estate Broker
Cell: 321.258.7556
mike@ullianrealty.com

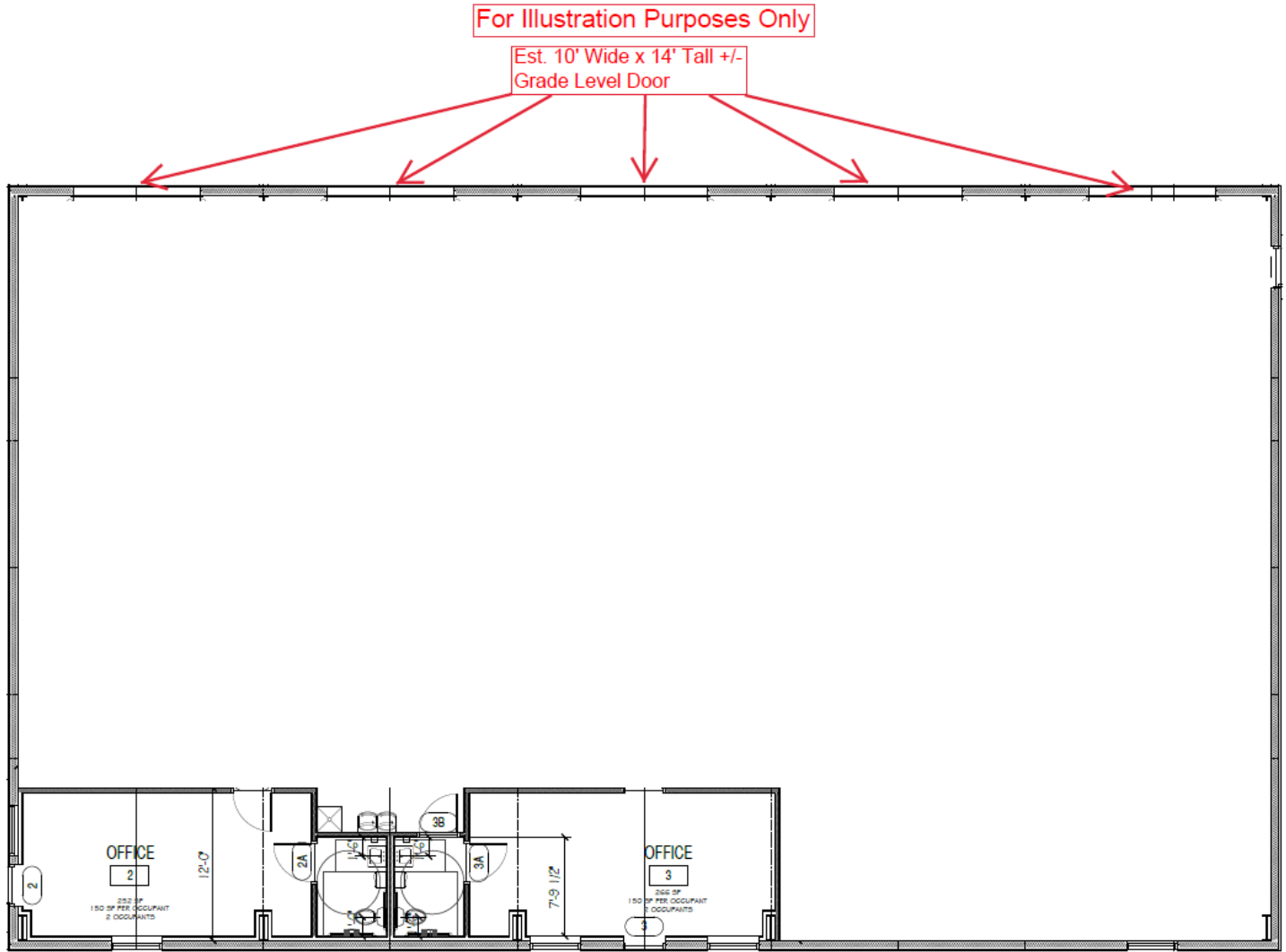
Broker Associate
Cell: 321.750.3439
zach@ullianrealty.com



Stand-Alone Warehouse With Yard

6940 Sonny Dale Drive, West Melbourne, FL 32904

Floor Plan - For Illustration Purposes Only



Individual Members
Michael S. Ullian

Michael S. Ullian, President, CCIM, SIOR Zach Ullian, SIOR

Licensed Real Estate Broker
Cell: 321.258.7556
mike@ullianrealty.com

Broker Associate
Cell: 321.750.3439
zach@ullianrealty.com



SIOR
Individual Members
Michael S. Ullian
Zachary M. Ullian

Stand-Alone Warehouse With Yard

6940 Sonny Dale Drive, West Melbourne, FL 32904

Additional Photos



Michael S. Ullian, President, CCIM, SIOR Zach Ullian, SIOR

Licensed Real Estate Broker
Cell: 321.258.7556
mike@ullianrealty.com

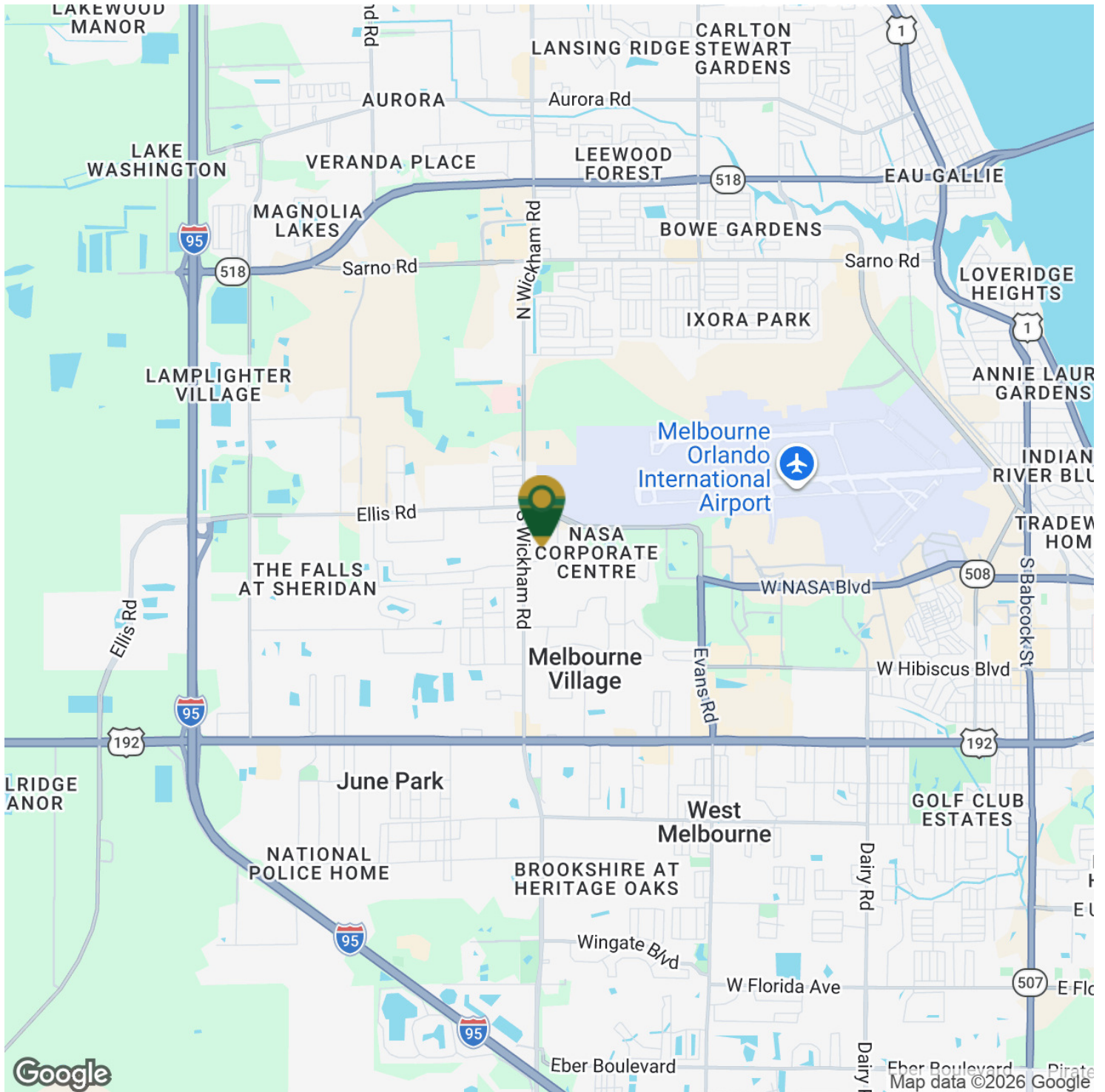
Broker Associate
Cell: 321.750.3439
zach@ullianrealty.com



Stand-Alone Warehouse With Yard

6940 Sonny Dale Drive, West Melbourne, FL 32904

Location Map



Michael S. Ullian, President, CCIM, SIOR Zach Ullian, SIOR

Licensed Real Estate Broker
Cell: 321.258.7556
mike@ullianrealty.com

Broker Associate
Cell: 321.750.3439
zach@ullianrealty.com

