

This drawing has been prepared solely for the use of Owner and there are no representations of any kind made by KP Architecture Ltd. to any party with whom KP Architecture Ltd. has not entered into a contract. This drawing shall not be used for construction purposes until it is issued for the purpose.

K	2026.03.02	ISSUED FOR MARKETING
B	2023.04.13	BP CITY COMMENTS 2
NO.	DATE Y/M/D	DESCRIPTION
ISSUES AND REVISIONS		
SEAL		

PROJECT NAME  
**9700 MAIN ST - LOT 2**

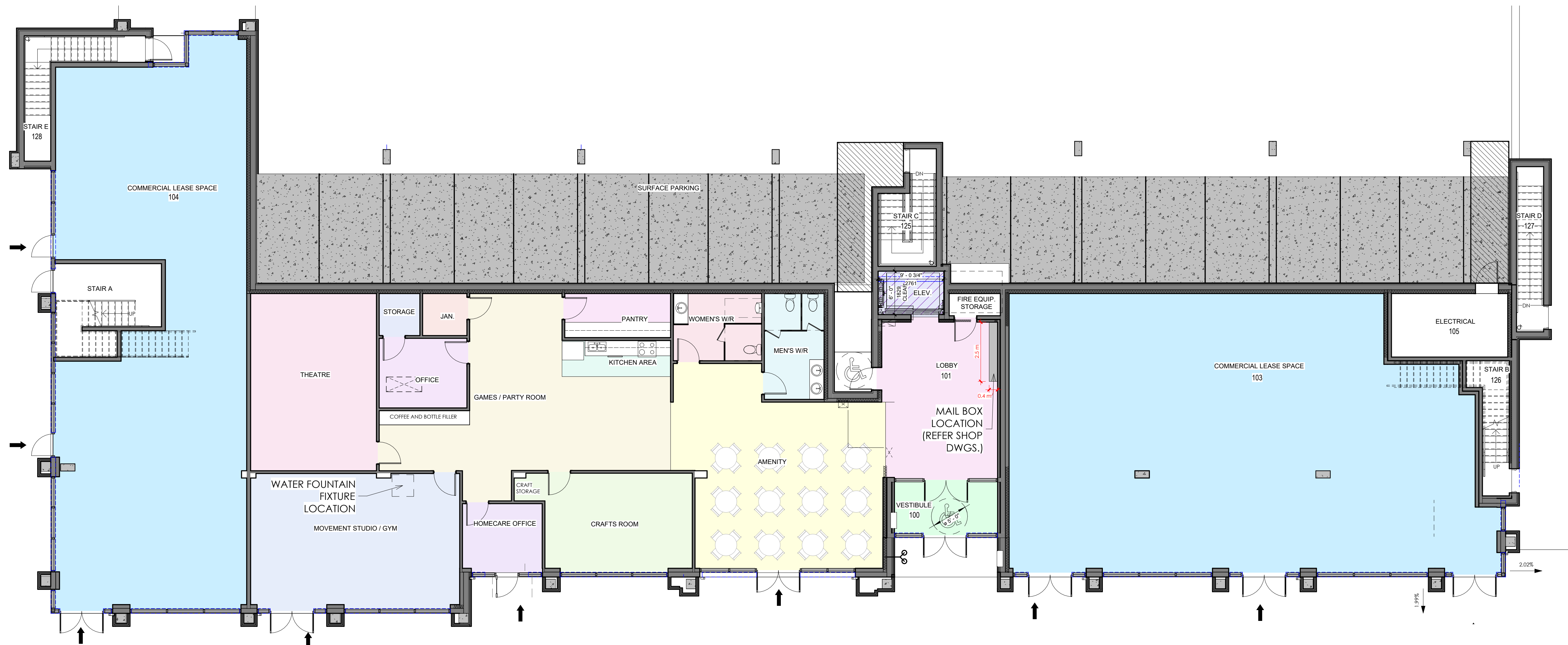
PROJECT ADDRESS  
9700 MAIN ST, LOT 2 - LAKE COUNTRY, BC

DRAWING TITLE  
**MARKETING PLANS**

SCALE	1/8" = 1'-0"
DRAWN	AV
REVIEWED	JL
PROJECT NO.	210886
DRAWING NO.	

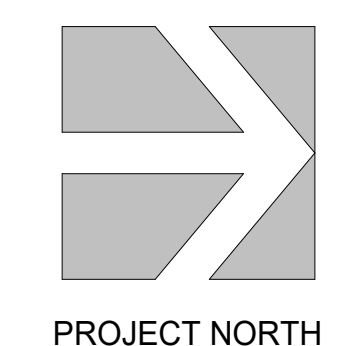
**Room Legend**

- AMENITY
- ELEV.
- HOMECARE OFFICE
- KITCHEN AREA
- MEN'S W/R
- PANTRY
- VESTIBULE
- COMMERCIAL LEASE SPACE
- GAMES / PARTY ROOM
- JAN.
- LOBBY
- MOVEMENT STUDIO / GYM
- STORAGE
- WOMEN'S W/R
- CRAFTS ROOM



① MAIN FLOOR PLAN  
1/8" = 1'-0"

UNIT BREAKDOWN													
Description	Unit Type	Bedrooms	Size (feet)		Unit Sq.Ft.	L1	L2	L3	L4	L5	L6	Total Units	Total Sq.Ft.
South West Corner Unit	A	2	22.00	x 28.00	846.64	0	1	1	1	1	0	4	3,386.56
North West Corner Unit	A1	2	27.08	x 27.50	887.21	0	1	1	1	1	0	4	3,548.84
South East Corner Unit	A2	2	22.00	x 27.50	947.74	0	1	1	1	1	0	4	3,790.96
North East Corner Unit	A3	2	31.00	x 27.50	801.71	0	1	1	1	1	0	4	3,206.84
Typical Inner Unit	B	2	31.25	x 27.50	816.47	0	6	6	6	6	6	30	24,494.10
Storage Closet	B1	2	31.00	x 27.50	916.52	0	1	1	1	1	1	5	4,582.60
H/C Accessible	C	1	30.00	x 33.50	688.46	0	2	2	2	2	2	10	6,884.60
Elevator	D	2	35.83	x 31.00	793.52	0	1	1	1	1	1	5	3,967.60
CRU 103					2590.00	1							2,590.00
CRU 104					1954.00	1							1,954.00
Residential Amenity					4023.00	1							4,023.00
<b>Res. Unit Totals:</b>							14	14	14	14	10	<b>66</b>	<b>53,862.10</b>
<b>Residential Totals:</b>													<b>57,885.10</b>
<b>Commercial Totals:</b>													<b>4,544.00</b>
<b>Overall:</b>													<b>62,429.10</b>



ARPD D:\The Book\B118 Rev... Main\118 Comp\118 218  
 4/10/2025 5:07:20 PM  
 C:\Users\jking\Documents\1886-Lake Country\021\_Krahn\0218.rvt