

# FOR LEASE • BUILDING 200

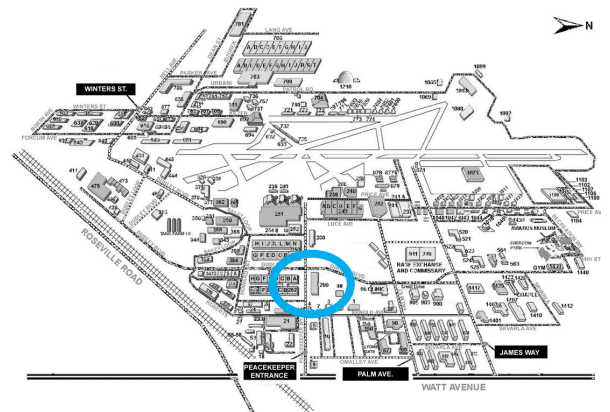
209,068 SF • 3237 Peacekeeper Way, McClellan



 Jason Klier • Jennifer Lewis

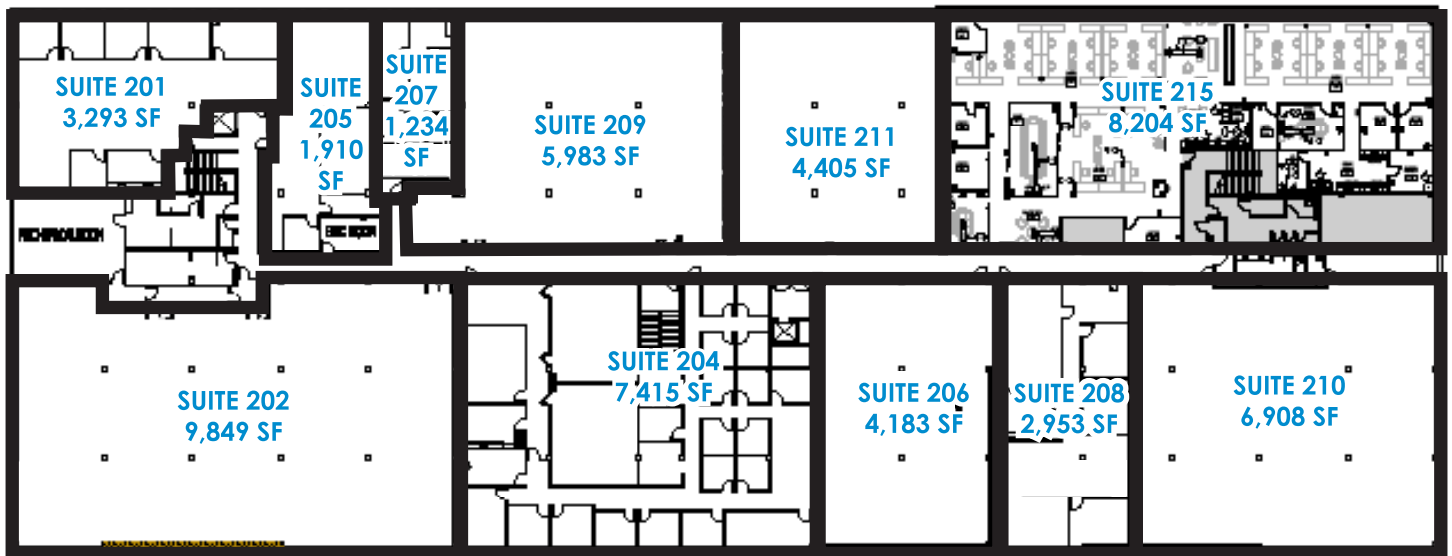
 Office: 916 965-7100

 Email: [Leasing@McClellanPark.com](mailto:Leasing@McClellanPark.com)



# FOR LEASE • BUILDING 200

209,068 SF • 3237 Peacekeeper Way, McClellan



## Building Features

Suites from 4,183 - 9,849 SF

- ✓ Prominent location
- ✓ Tenant improvements to suit
- ✓ Marble / granite features
- ✓ Full window line
- ✓ Monument sign opportunity
- ✓ Fiber ready
- ✓ Building signage opportunity
- ✓ Ample parking: 4:1,000 SF

## Services & Amenities

- ✓ Onsite full service hotel
- ✓ Onsite meeting & event services
- ✓ Onsite full service airport and FBO
- ✓ Onsite restaurants
- ✓ Regional transit shuttle to lightrail
- ✓ Close proximity to Watt & I-80 Freeways
- ✓ 24/7/365 onsite security patrol
- ✓ Residential apartments & homes for rent
- ✓ Full broker cooperation