

# 60-26

## WOODSIDE AVENUE WOODSIDE, QUEENS

Between West 60<sup>th</sup> & 61<sup>st</sup> Streets

RETAIL FOR LEASE

### APPROXIMATE SIZE

Ground Floor: 8,000 SF  
Basement: 8,000 SF

### ASKING RENT

~~\$67.50 PSF~~ Reduced  
\$50 PSF

### POSSESSION

Immediate

### TERM

10-15 Years

### FRONTAGE

75 FT

### COMMENTS

- Previously "Rite Aid"
- Directly off the 7-train in the heart of Woodside
- Conveyor belt, coolers, pharmacy, and isles still in place
- Minimal column intrusions allowing for an open floor plan
- Perfect for pharmacy's and grocers, fitness, and other retail market uses

### NEIGHBORS

Webster Bank • Carvel • Pizza Hut • Dunkin' • Subway • Key Food • The Salvation Army • UPS • Staples • Planet Fitness • Kennedy Fried Chicken

### TRANSPORTATION

7



PROPERTY INFORMATION

### NOAM AZIZ

Senior Director  
212.468.5984  
naziz@meridiancapital.com

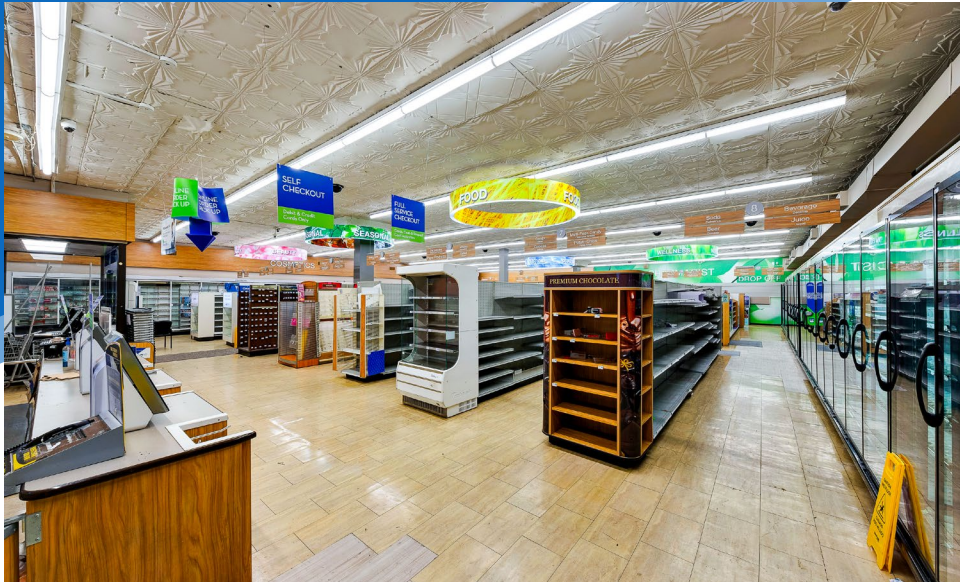
### COLE KLEPPINGER

Senior Associate  
212.468.5993  
ckleppinger@meridiancapital.com



**MERIDIAN**  
RETAIL LEASING

All information supplied is from sources deemed reliable and is furnished subject to errors, omissions, modifications, removal of the listing from sale or lease, and to any listing conditions, including the rates and manner of payment of commissions for particular offerings imposed by Meridian Capital Group. This information may include estimates and projections prepared by Meridian Capital Group with respect to future events, and these future events may or may not actually occur. Such estimates and projections reflect various assumptions concerning anticipated results. While Meridian Capital Group believes these assumptions are reasonable, there can be no assurance that any of these estimates and projections will be correct. Therefore, actual results may vary materially from these estimates and projections. Any square footage dimensions set forth are approximate.



INTERIOR | GROUND FLOOR

**NOAM AZIZ**  
Senior Director  
212.468.5984  
naziz@meridiancapital.com

**COLE KLEPPINGER**  
Senior Associate  
212.468.5993  
ckleppinger@meridiancapital.com



**MERIDIAN**  
RETAIL LEASING



INTERIOR | LOWER LEVEL

**NOAM AZIZ**  
Senior Director  
212.468.5984  
naziz@meridiancapital.com

**COLE KLEPPINGER**  
Senior Associate  
212.468.5993  
ckleppinger@meridiancapital.com

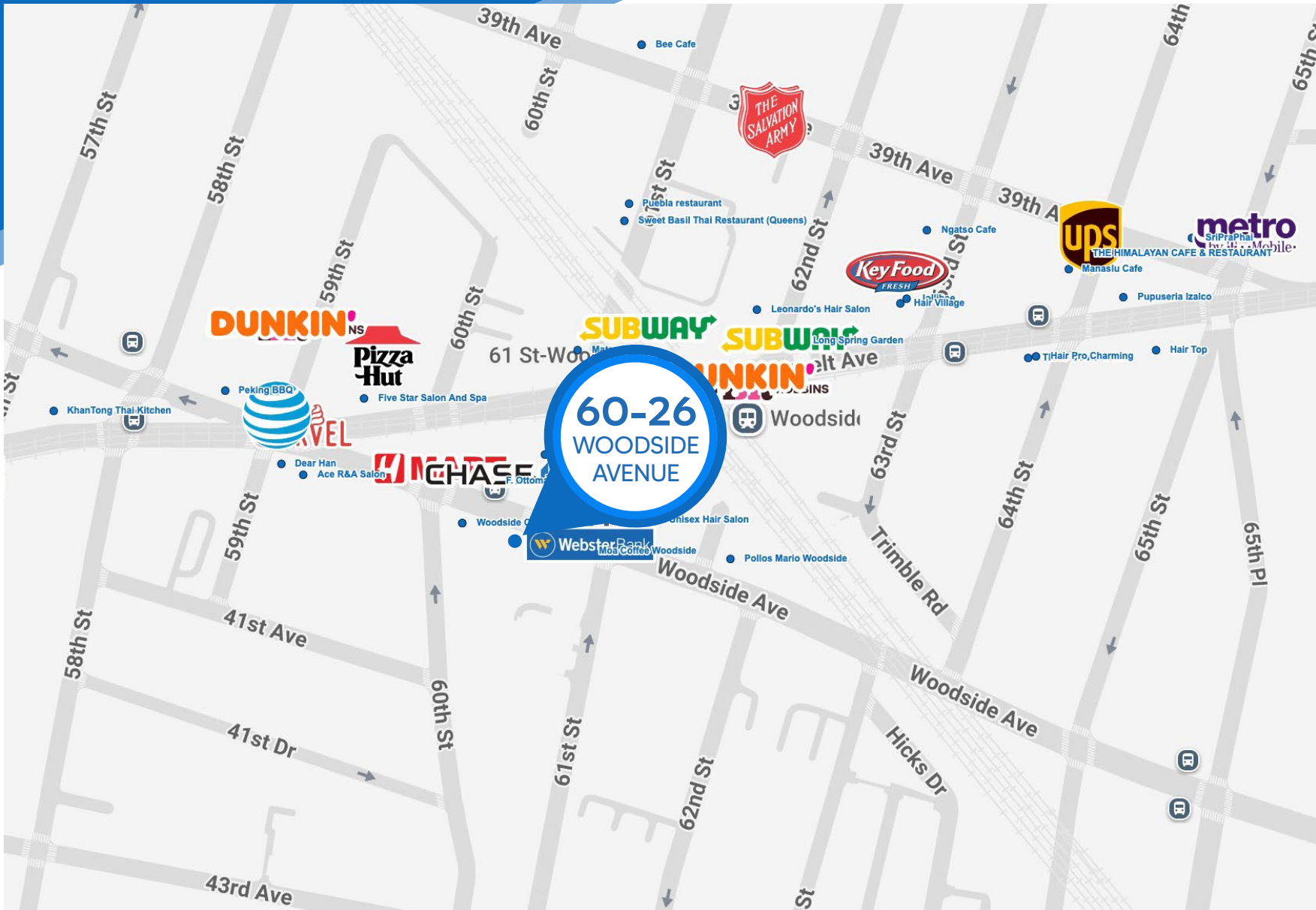


**MERIDIAN**  
RETAIL LEASING

# 60-26 WOODSIDE AVENUE

WOODSIDE, QUEENS | Between West 60<sup>th</sup> and 61<sup>st</sup> Streets

RETAIL FOR LEASE



NEIGHBORS

**NOAM AZIZ**  
Senior Director  
212.468.5984  
naziz@meridiancapital.com

**COLE KLEPPINGER**  
Senior Associate  
212.468.5993  
ckleppinger@meridiancapital.com



**MERIDIAN**  
RETAIL LEASING

All information supplied is from sources deemed reliable and is furnished subject to errors, omissions, modifications, removal of the listing from sale or lease, and to any listing conditions, including the rates and manner of payment of commissions for particular offerings imposed by Meridian Capital Group. This information may include estimates and projections prepared by Meridian Capital Group with respect to future events, and these future events may or may not actually occur. Such estimates and projections reflect various assumptions concerning anticipated results. While Meridian Capital Group believes these assumptions are reasonable, there can be no assurance that any of these estimates and projections will be correct. Therefore, actual results may vary materially from these estimates and projections. Any square footage dimensions set forth are approximate.