



Unit 11 Hyatt Trading Estate, Babbage Road, Stevenage, SG1 2EQ

Refurbished Industrial Unit

Summary

Tenure	To Let
Available Size	2,364 sq ft / 219.62 sq m
Rent	£39,005 per annum
EPC Rating	Upon enquiry

Key Points

- Strategic Location
- Good Natural Daylight
- Forecourt Parking
- Refurbished

Unit 11 Hyatt Trading Estate, Babbage Road, Stevenage, SG1 2EQ

Location

The Hyatt Trading Estate is located to the west of Stevenage town centre and offers easy access to Junctions 7 & 8 of the A1(M). This in turn provides access to the M25 via Junction 23, approximately 15 miles to the south.

Description

The estate is arranged as 11 self-contained industrial units, totalling 29,000 sqft and includes some trade counter operators. Unit 11 is end-terraced, with partly clad facing brick elevations and a mono-pitched roof. It benefits from the following:

- Recent internal redecoration.
- Motorised roller shutter.
- 3-phase electricity supply.
- Twin w/c.
- Translucent roof panels.
- Forecourt parking spaces.
- Additional parking space (in front of loading door).

Terms

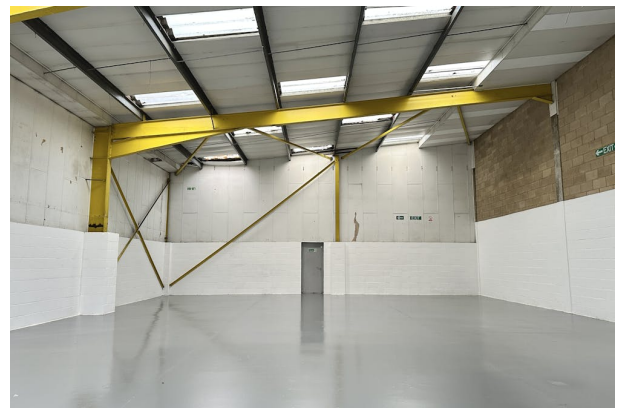
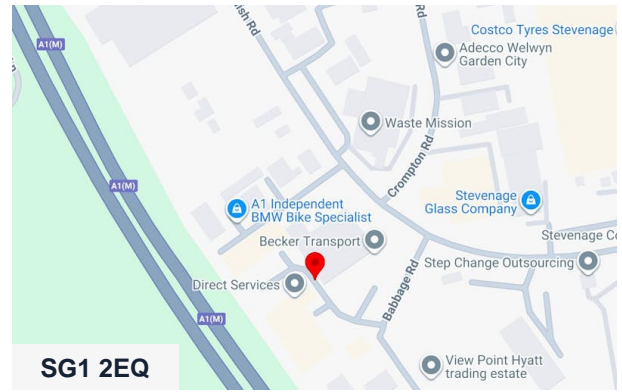
The property is available by way of a new Full Repairing & Insuring (FRI) lease for £39,005 per annum exclusive.

Rateable Value

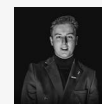
The rateable value is £27,500 (please note this is not rates payable).

VAT

Plus VAT at the appropriate rate.



Viewing & Further Information



Jacob Wood

01582 401 221 | 07401 221 022

j.w@srwood.co.uk