

The Terrace at Northpointe

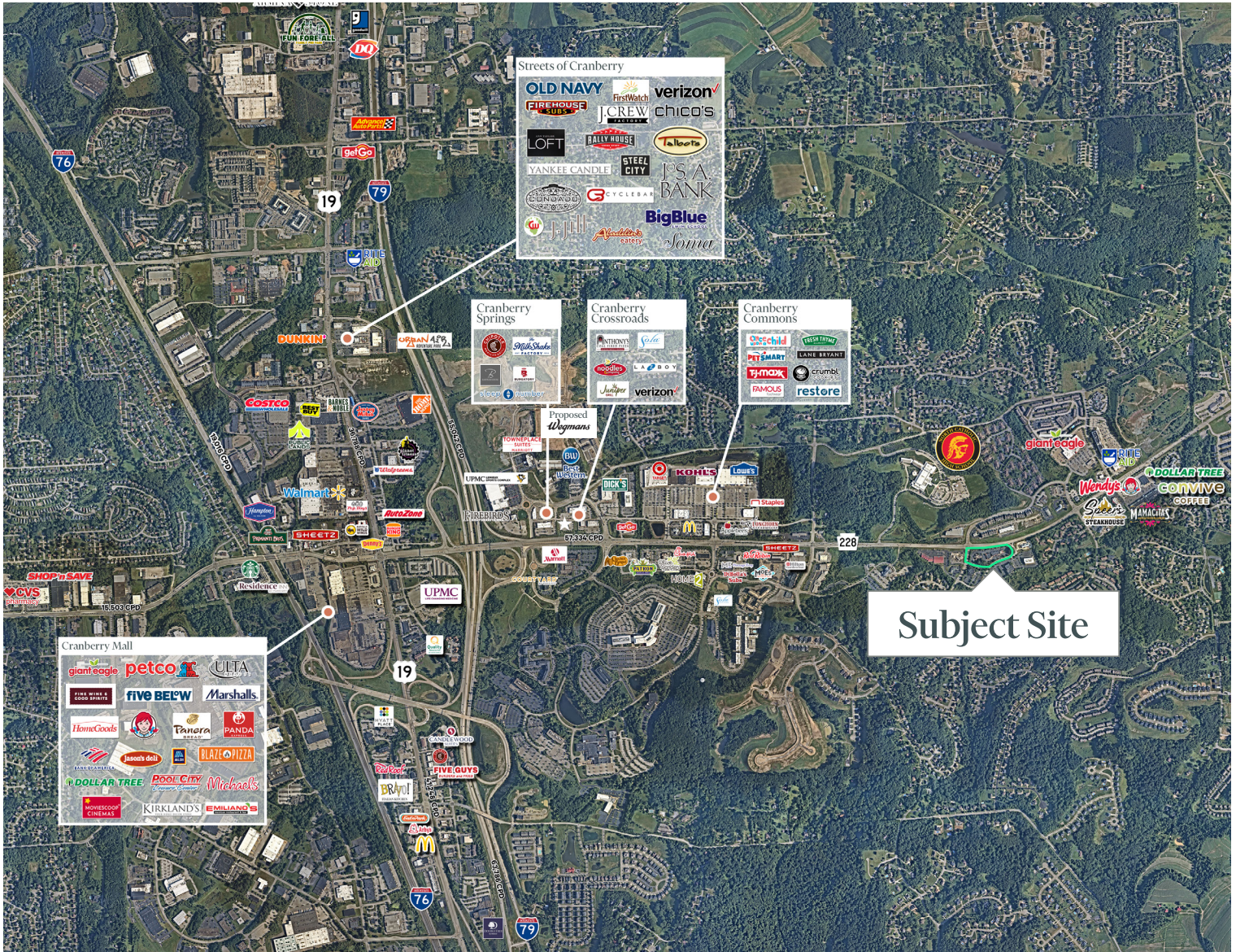
530 Northpointe Circle | Seven Fields, PA 16046



Property Overview

- + 6,693 sq. ft. first floor with 808 sq. ft. mezzanine and 300 sq. ft. balcony
- + Located at The Terrace at Northpointe, a 28,000 sq. ft. retail center surrounded by 160,000sf of office space
- + Join Mediterra Cafe, Moses Jewelers, Quest Diagnostics, Bruster's Ice Cream and Salon Blanca
- + On-site parking for 170 vehicles
- + Great for retail, medical or other service-oriented businesses
- + 17,773 vehicles per day on Route 228
- + Signalized access and great visibility





Contact Us

Steven M. Esposito
 First Vice President
 +1 412 716 4865
 steven.esposito@cbre.com

2024 Demographics	One Mile	Three Miles	Five Miles
Total Population	6,051	33,214	81,128
Daytime Population	28,822	64,118	108,783
Average Household Income	\$169,201	\$182,568	\$180,411
Households	2,379	12,554	30,847

© 2025 CBRE, Inc. All rights reserved. This information has been obtained from sources believed reliable, but has not been verified for accuracy or completeness. You should conduct a careful, independent investigation of the property and verify all information. Any reliance on this information is solely at your own risk. CBRE and the CBRE logo are service marks of CBRE, Inc. All other marks displayed on this document are the property of their respective owners, and the use of such logos does not imply any affiliation with or endorsement of CBRE. Photos herein are the property of their respective owners. Use of these images without the express written consent of the owner is prohibited.